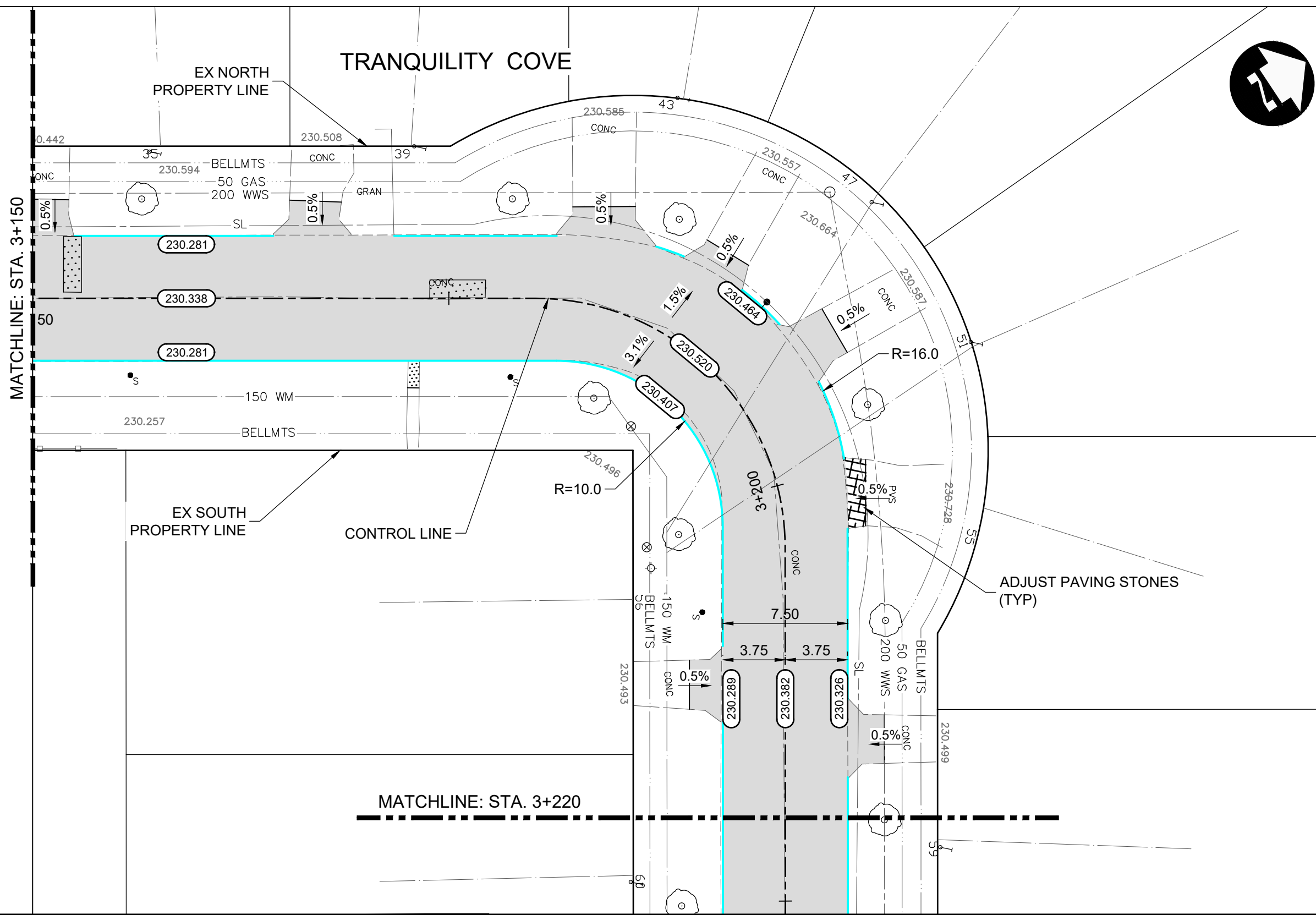
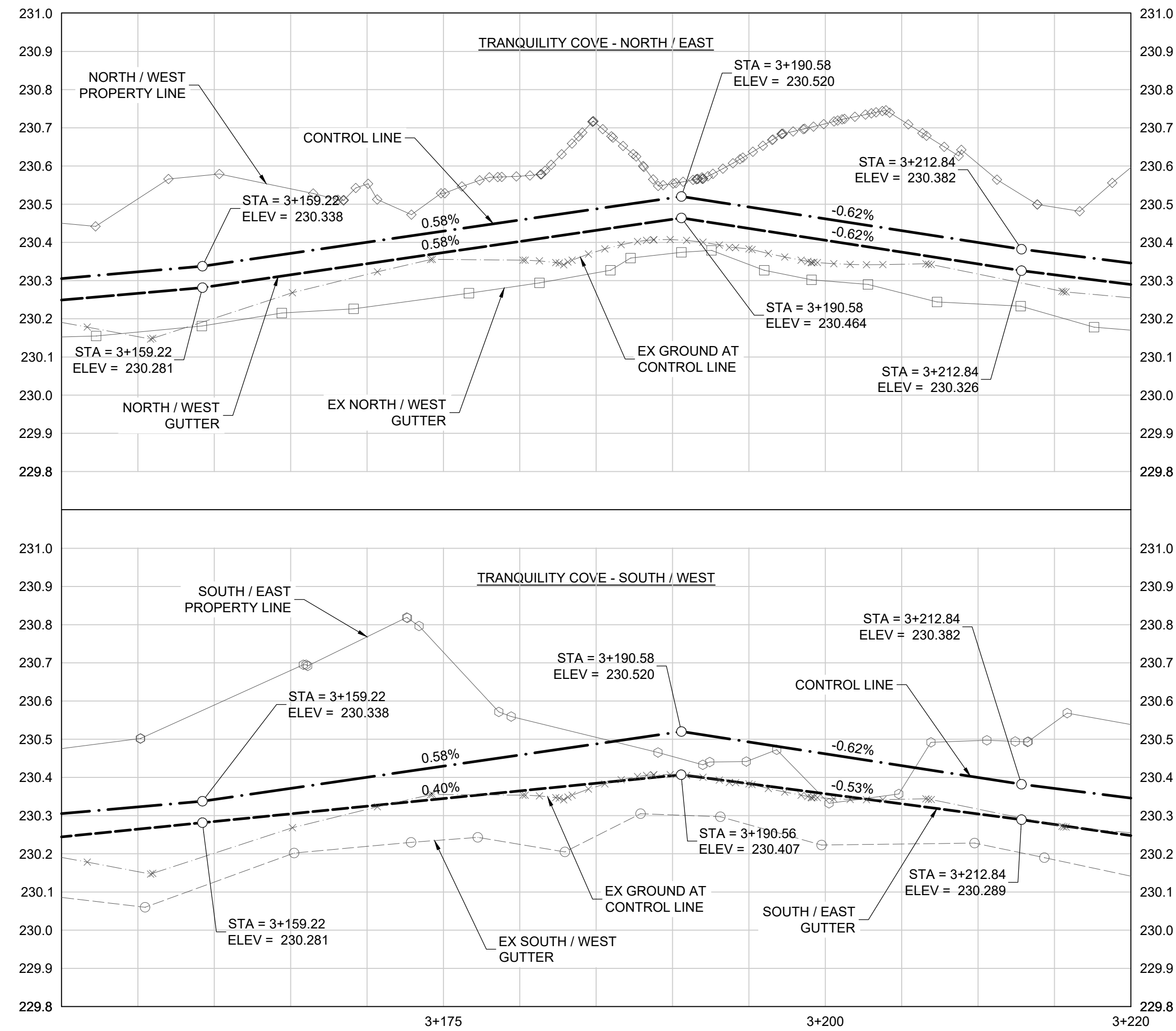


C:\pwworking\projects\2023\dillon_40pmw\dms5376\237231-TRA-CT-CON-PP.dwg



CONSTRUCTION NOTES:

- ISOLATE MISCELLANEOUS ITEMS IN NEW CONCRETE WORKS AS PER SD-228C.
- ALL WORK AND MATERIALS TO BE IN ACCORDANCE WITH LATEST REVISION OF THE CITY OF WINNIPEG STANDARD CONSTRUCTION SPECIFICATIONS.
- LEGAL PLAN AND UNDERGROUND INFORMATION FROM CITY OF WINNIPEG LBIS. CONTRACTOR TO VERIFY ALL UNDERGROUNDS IN THE FIELD.
- CONTRACTOR TO TAKE PRECAUTIONARY STEPS TO AVOID DAMAGE FROM CONSTRUCTION ACTIVITIES TO TREES WITHIN THE LIMITS OF CONSTRUCTION.
- LOCATION OF EXISTING UTILITIES/SERVICES TO BE CONFIRMED IN THE FIELD BY THE CONTRACTOR.
- INSTALL CB LEADS AT MIN. 1.0% SLOPE OR AS DIRECTED BY THE CONTRACT ADMINISTRATOR.
- CONTRACTOR TO CONFIRM EXISTING LEAD INVERT ELEVATIONS PRIOR TO INSTALLATION.
- ALL DIMENSIONS ARE TO BACK OF CURB.
- LIMITS OF CURB AND SIDEWALK RECONSTRUCTION TO BE FINALIZED IN THE FIELD BY THE CONTRACT ADMINISTRATOR.
- ADJUST ALL WATER VALVES, MANHOLES, CATCH BASINS, CATCH PITS AND WATER SHUT OFF VALVES TO GRADE.
- ALL PRIVATE WALKWAYS TO BE ADJUSTED TO NEW SIDEWALK OR TOP OF CURB ELEVATION, AS REQUIRED.
- STREET LIGHT STANDARDS, HYDRO POLES AND ANCHORS THAT REQUIRE TEMPORARY SUPPORT, REMOVAL OR REPLACEMENT, ARE TO BE DONE AT THE EXPENSE OF THE CONTRACTOR, AS NECESSARY.
- FOR ROAD RECONSTRUCTIONS, INSTALL 6 m OF 150 mm SUBDRAIN TO CATCH BASINS IN BOTH DIRECTIONS PARALLEL TO ROADWAY AS PER SD-245 AND CAP ENDS.
- FOR ROAD RECONSTRUCTIONS, ALL WATER MAINS AND SERVICES NEED TO BE INSULATED, ADDITIONALLY, ALL CATCH BASINS, MANHOLES AND LEAD PIPES LOCATED WITHIN 2.0 m OF A RESIDENTIAL SERVICE MUST BE INSULATED TO PROTECT THE SERVICE FROM POTENTIAL FUTURE FREEZING.
- FOR ROAD RECONSTRUCTIONS, CURB REVEAL SHALL BE 180 mm UNLESS NOTED OTHERWISE. FOR ROAD REHABILITATIONS, CURB REVEAL SHALL BE 150 mm UNLESS NOTED OTHERWISE.

CURB LEGEND

- BARRIER CURB FOR ASPHALT PAVEMENT (SD-200A) —
- BARRIER CURB FOR CONC. PAVEMENT (SD-205) ---
- MODIFIED BARRIER CURB FOR ASPHALT PAVEMENT (SD-200B) ---
- MODIFIED BARRIER CURB FOR CON. PAVEMENT (SD-203B) ---
- MODIFIED LIP CURB (SD-202C) ---
- CURB RAMP FOR ASPHALT PAVEMENT (SD-200D) ---
- REMOVALS / RELOCATES ○
- REMOVALS / RELOCATES (BY OTHERS) ○
- ADJUSTMENTS ○
- ADJUSTMENTS (BY OTHERS) ○

ABBREVIATIONS:

- | | | | |
|------|----------------|---|---------------------------|
| CONC | CONCRETE | ○ | HYDRO MANHOLE |
| ASP | ASPHALT | ○ | TELEPHONE MANHOLE |
| TYP | TYPICAL | ○ | TRAFFIC SIGNAL SPLICE PIT |
| EX | EXISTING | ○ | WATER VALVE |
| MH | MANHOLE | ○ | HYDRANT |
| WV | WATER VALVE | ○ | CURB STOP |
| EL | ELEVATION | ○ | GAS VALVE |
| CB | CATCH BASIN | ○ | HYDRO POLE |
| CP | CATCH PIT | ○ | HYDRO POLE WITH LIGHT |
| CI | CURB INLET | ○ | STREET LIGHT |
| CL | CONTROL LINE | ○ | TRAFFIC SIGNAL |
| SL | STREET LIGHT | ○ | SIGNAL CONTROL BOX |
| TS | TRAFFIC SIGNAL | ○ | BELLMTS PEDESTAL |
| | | ○ | TREE |
| | | ○ | IRON PROPERTY BAR |
| | | ○ | HYDRO GUY ANCHOR |

METRIC

WHOLE NUMBERS INDICATE MILLIMETRES
DECIMALIZED NUMBERS INDICATE METRES

WARNING

IF POWER EQUIPMENT OR EXPLOSIVES ARE TO BE USED FOR EXCAVATION ON THIS PROJECT THE CONTRACTOR MUST:

- NOTIFY THE GAS COMPANY OF THE PROPOSED LOCATION OF EXCAVATION.
- TAKE PRECAUTION TO AVOID DAMAGE TO GAS COMPANY INSTALLATIONS SEE PROVINCIAL REGULATION 210/72 FOR DETAILS.
- OBTAIN EXCAVATION PERMITS PRIOR TO CONSTRUCTION.

**PRELIMINARY ONLY
NOT FOR CONSTRUCTION**

150 WM	WATERMAIN	150 WM	CONCRETE ROAD	○	PROFILE	---	NORTH/WEST GUTTER	---
300 LDS	LAND DRAINAGE SEWER	300 LDS	ASPHALT ROAD	---	---	---	SOUTH/EAST GUTTER	---
250 WWS	WASTE WATER SEWER	250 WWS	CONC ROAD W/ASP OVERLAY	---	---	---	NORTH/WEST MED. GUTTER	---
HYDRO	HYDRO	HYDRO	CONCRETE SIDEWALK	---	---	---	SOUTH/EAST MED. GUTTER	---
BELLMTS	BELLMTS	BELLMTS	ASPHALT PATH	---	---	---	NORTH/WEST DITCH	---
100 GAS	GAS	100 GAS	REMOVALS	---	---	---	SOUTH/EAST DITCH	---
T.S.	TRAFFIC SIGNALS	T.S.	PAVEMENT REPAIR FABRIC	---	---	---	NORTH/WEST SIDEWALK	---
S.L.	STREET LIGHTS	S.L.	ELEVATION	(232.000)	---	---	SOUTH/EAST SIDEWALK	---
○	MANHOLE	●	PROPERTY LINE	---	---	---		---
□	CATCH BASIN	■	CURB RAMP	---	---	---		---
▽	CATCH PIT	▼	DETECTABLE TILE	---	---	---		---
EXISTING	LEGEND-PLAN	PROPOSED	EXISTING	LEGEND-PLAN	PROPOSED	EXISTING	LEGEND-PROFILE	PROPOSED

UNDERGROUND STRUCTURES	
SUPPLY U/G STRUCTURES	DATE
LOCATION OF UNDERGROUND STRUCTURES AS SHOWN ARE BASED ON THE BEST INFORMATION AVAILABLE BUT NO GUARANTEE IS GIVEN THAT ALL EXISTING UTILITIES ARE SHOWN OR THAT THE GIVEN LOCATIONS ARE EXACT. CONFIRMATION OF EXISTENCE AND EXACT LOCATION OF ALL SERVICES MUST BE OBTAINED FROM THE INDIVIDUAL UTILITIES BEFORE PROCEEDING WITH CONSTRUCTION.	

B.M. ELEV.				
DESIGNED BY	PMW			
DRAWN BY	LK			
CHECKED BY	AJF			
APPROVED BY	DBW			
HOR. SCALE	1:250			
VERTICAL	1:10			
0	ISSUED FOR TENDER	24-06-13	DBW	
NO.	REVISIONS	DATE	BY	DATE

DESIGNED BY: PMW
DRAWN BY: LK
CHECKED BY: AJF
APPROVED BY: DBW
HOR. SCALE: 1:250
VERTICAL: 1:10
RELEASED FOR CONSTRUCTION
DATE: _____

ENGINEER'S SEAL
PROVINCE OF MANITOBA
2024-06-13
D.B. WIEBE
Member 22480
REGISTERED PROFESSIONAL ENGINEER
CONSULTANT PROJECT NUMBER
23-7321

THE CITY OF WINNIPEG
PUBLIC WORKS DEPARTMENT
2024 LOCAL STREETS RENEWALS 24-R-02
CONTRACT 2 (181-2024)
TRANQUILITY COVE - GILMORE AVE-SUMMERFIELD WAY
PLAN-PROFILE (STA. 3+150 TO STA. 3+220)

CITY DRAWING NUMBER
SHEET 14 OF 18
CONSULTANT DRAWING NUMBER