

- ### CONSTRUCTION NOTES:
- ISOLATE MISCELLANEOUS ITEMS IN NEW CONCRETE WORKS AS PER SD-228C.
 - ALL WORK AND MATERIALS TO BE IN ACCORDANCE WITH LATEST REVISION OF THE CITY OF WINNIPEG STANDARD CONSTRUCTION SPECIFICATIONS.
 - LEGAL PLAN AND UNDERGROUND INFORMATION FROM CITY OF WINNIPEG LBIS. CONTRACTOR TO VERIFY ALL UNDERGROUNDS IN THE FIELD.
 - CONTRACTOR TO TAKE PRECAUTIONARY STEPS TO AVOID DAMAGE FROM CONSTRUCTION ACTIVITIES TO TREES WITHIN THE LIMITS OF CONSTRUCTION.
 - LOCATION OF EXISTING UTILITIES/SERVICES TO BE CONFIRMED IN THE FIELD BY THE CONTRACTOR.
 - INSTALL CB LEADS AT MIN. 1.0% SLOPE OR AS DIRECTED BY THE CONTRACT ADMINISTRATOR.
 - CONTRACTOR TO CONFIRM EXISTING LEAD INVERT ELEVATIONS PRIOR TO INSTALLATION.
 - ALL DIMENSIONS ARE TO BACK OF CURB.
 - LIMITS OF CURB AND SIDEWALK RECONSTRUCTION TO BE FINALIZED IN THE FIELD BY THE CONTRACT ADMINISTRATOR.
 - ADJUST ALL WATER VALVES, MANHOLES, CATCH BASINS, CATCH PITS AND WATER SHUT OFF VALVES TO GRADE.
 - ALL PRIVATE WALKWAYS TO BE ADJUSTED TO NEW SIDEWALK OR TOP OF CURB ELEVATION, AS REQUIRED.
 - STREET LIGHT STANDARDS, HYDRO POLES AND ANCHORS THAT REQUIRE TEMPORARY SUPPORT, REMOVAL OR REPLACEMENT, ARE TO BE DONE AT THE EXPENSE OF THE CONTRACTOR, AS NECESSARY.
 - FOR ROAD RECONSTRUCTIONS, INSTALL 6 m OF 150 mm SUBDRAIN TO CATCH BASINS IN BOTH DIRECTIONS PARALLEL TO ROADWAY AS PER SD-245 AND CAP ENDS.
 - FOR ROAD RECONSTRUCTIONS, ALL WATER MAINS AND SERVICES NEED TO BE INSULATED. ADDITIONALLY, ALL CATCH BASINS, MANHOLES AND LEAD PIPES LOCATED WITHIN 2.0 m OF A RESIDENTIAL SERVICE MUST BE INSULATED TO PROTECT THE SERVICE FROM POTENTIAL FUTURE FREEZING.
 - FOR ROAD RECONSTRUCTIONS, CURB REVEAL SHALL BE 180 mm UNLESS NOTED OTHERWISE. FOR ROAD REHABILITATIONS, CURB REVEAL SHALL BE 150 mm UNLESS NOTED OTHERWISE.

CURB LEGEND

BARRIER CURB FOR ASPHALT PAVEMENT (SD-200A) —
 BARRIER CURB FOR CONC. PAVEMENT (SD-205) -
 MODIFIED BARRIER CURB FOR ASPHALT PAVEMENT (SD-200B) -
 MODIFIED BARRIER CURB FOR CON. PAVEMENT (SD-203B) -
 MODIFIED LIP CURB (SD-202C) -
 CURB RAMP FOR ASPHALT PAVEMENT (SD-200D) -

REMOVALS / RELOCATES ○
 REMOVALS / RELOCATES (BY OTHERS) ○
 ADJUSTMENTS ○
 ADJUSTMENTS (BY OTHERS) ○

ABBREVIATIONS:

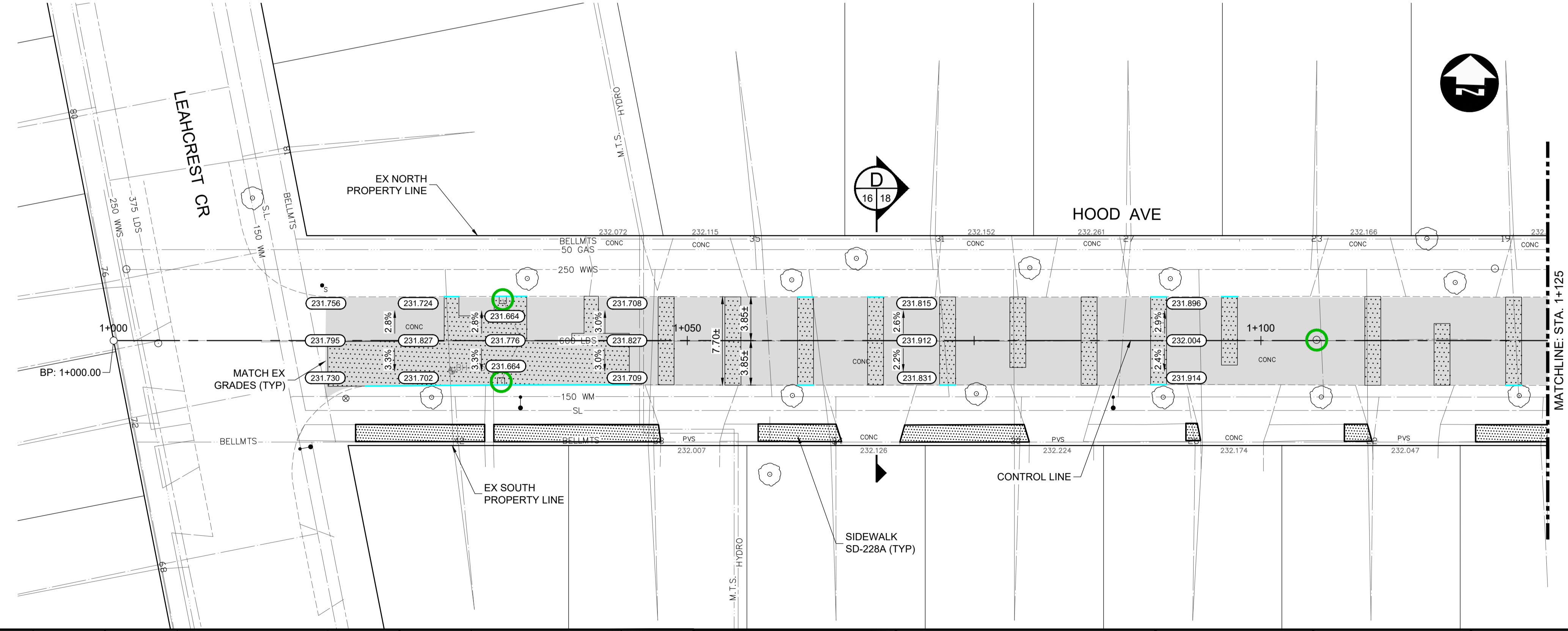
CONC	CONCRETE	○	HYDRO MANHOLE
ASP	ASPHALT	○	TELEPHONE MANHOLE
Typ	TYPICAL	○	TRAFFIC SIGNAL SPLICE PIT
EX	EXISTING	○	WATER VALVE
MH	MANHOLE	○	HYDRANT
WV	WATER VALVE	○	CURB STOP
EL	ELEVATION	○	GAS VALVE
CB	CATCH BASIN	○	HYDRO POLE
CP	CATCH PIT	○	HYDRO POLE WITH LIGHT
CI	CURB INLET	○	STREET LIGHT
CL	CONTROL LINE	○	TRAFFIC SIGNAL
SL	STREET LIGHT	○	SIGNAL CONTROL BOX
TS	TRAFFIC SIGNAL	○	BELLMITS PEDESTAL
		○	TREE
		○	IRON PROPERTY BAR
		○	HYDRO GUY ANCHOR

METRIC

WHOLE NUMBERS INDICATE MILLIMETRES
DECIMALIZED NUMBERS INDICATE METRES

- ### WARNING
- IF POWER EQUIPMENT OR EXPLOSIVES ARE TO BE USED FOR EXCAVATION ON THIS PROJECT THE CONTRACTOR MUST:
- NOTIFY THE GAS COMPANY OF THE PROPOSED LOCATION OF EXCAVATION.
 - TAKE PRECAUTION TO AVOID DAMAGE TO GAS COMPANY INSTALLATIONS SEE PROVINCIAL REGULATION 210/72 FOR DETAILS.
 - OBTAIN EXCAVATION PERMITS PRIOR TO CONSTRUCTION.

**PRELIMINARY ONLY
NOT FOR CONSTRUCTION**



150 WM	WATERMAIN	150 WM	CONCRETE ROAD	○	PROFILE	UNDERGROUND STRUCTURES	B.M. ELEV.	DESIGNED BY	PMW		ENGINEER'S SEAL PROVINCE OF MANITOBA 2024-06-13 DB WIEBE Member 22480 REGISTERED PROFESSIONAL ENGINEER
300 LDS	LAND DRAINAGE SEWER	300 LDS	ASPHALT ROAD	○	NORTH/WEST GUTTER	SUPPLY, U/G STRUCTURES	DATE	DRAWN BY	DC/LK		
250 WWS	WASTE WATER SEWER	250 WWS	CONC ROAD W/ASP OVERLAY	○	SOUTH/EAST GUTTER			CHECKED BY	AJF	CITY DRAWING NUMBER	
HYDRO	HYDRO	HYDRO	CONCRETE SIDEWALK	○	NORTH/WEST MED. GUTTER			APPROVED BY	DBW	SHEET	16 OF 18
BELLMTS	BELLMTS	BELLMTS	ASPHALT PATH	○	SOUTH/EAST MED. GUTTER			HOR. SCALE	1:250	CONSULTANT DRAWING NUMBER	
100 GAS	GAS	100 GAS	REMOVALS	○	NORTH/WEST DITCH			VERTICAL	1:10	HOOD AVE - SCARFE ST-LEAHCREST CRES PLAN-PROFILE (START TO MID)	
T.S.	TRAFFIC SIGNALS	T.S.	PAVEMENT REPAIR FABRIC	○	SOUTH/EAST DITCH			RELEASED FOR CONSTRUCTION	DATE		
S.L.	STREET LIGHTS	S.L.	ELEVATION	○	NORTH/WEST SIDEWALK			0	ISSUED FOR TENDER	24-06-13	23-7321
○	MANHOLE	●	PROPERTY LINE	○	SOUTH/EAST SIDEWALK			NO.	REVISIONS	DATE	
○	CATCH BASIN	□	CURB RAMP	○	EXISTING			BY	DATE		
▽	CATCH PIT	▼	DETECTABLE TILE	○	PROPOSED						
EXISTING	LEGEND-PLAN	PROPOSED	EXISTING	LEGEND-PLAN	PROPOSED	EXISTING	LEGEND-PROFILE	PROPOSED			

C:\working_directory\projects_2023\dillon_40pmw\dms5176\237231-HOD-CT-COM-PP.dwg