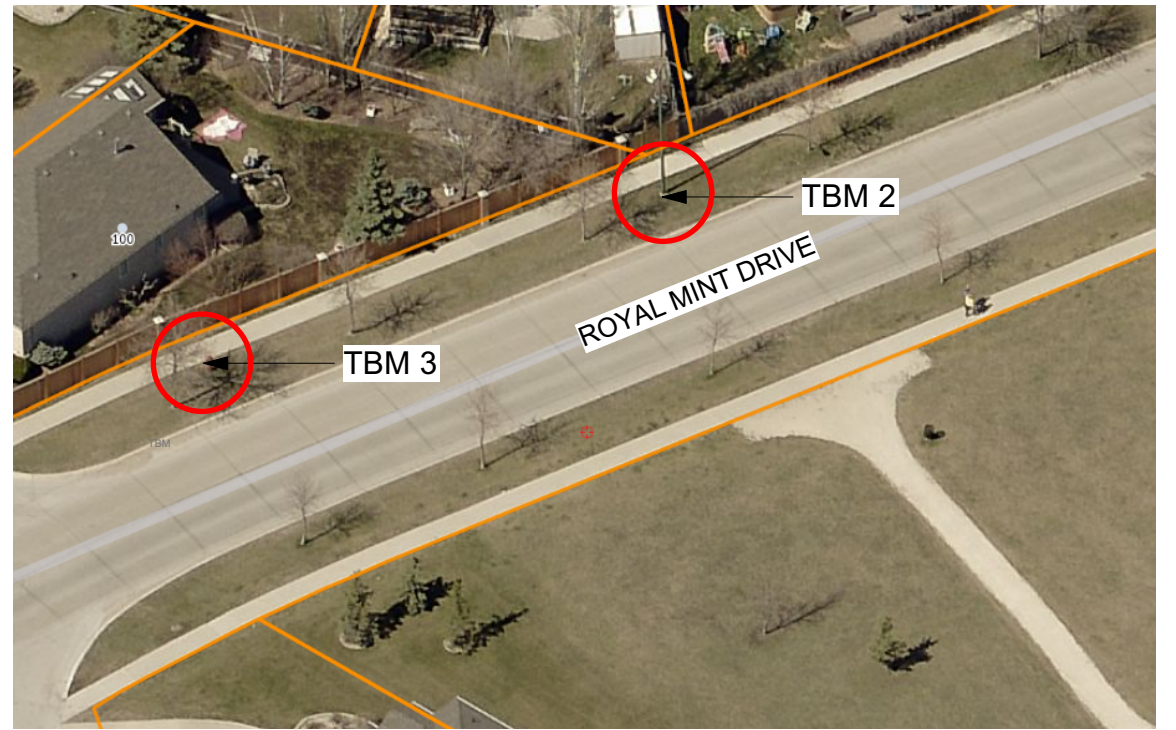


LEGEND

Contour Interval = 0.05m
 TOSS = Top of Safety Surface
 TOC = Top of Concrete Edging
 TOC ACC = Concrete Edging Accessible Entry
 Proposed Slope: $\xrightarrow{-2\%}$
 Proposed Elevation: $+100.15$
 Existing Elevation: \oplus GR / 99.83m
 Proposed Contours: \times \times
 Existing Contours: $---$ 100
 Benchmark Elevations:
 TBM1 = NW Nut of Park Light 99.95
 TBM2 = NW Nut of Streetlight - 99.32
 TBM3 = Top Fire Hydrant - 100.51
 Play Area Subgrade Direction of Drainage \leftarrow

GRADING NOTES

1. ALL WORK TO CONFORM TO CURRENT CITY OF WINNIPEG STANDARD CONSTRUCTION SPECIFICATIONS AND DETAILS UNLESS OTHERWISE NOTED.
2. DIMENSIONS ARE IN METERS UNLESS OTHERWISE NOTED.
3. DO NOT SCALE DRAWING.
4. PROTECT EXISTING TREES TO REMAIN, TYP.
5. PAVEMENT SLOPE: DIRECTIONAL SLOPE 5% MAX., CROSS SLOPE 2% MAX., UNLESS OTHERWISE NOTED.
6. PROPOSED ELEVATIONS ARE PATHWAY OR SOD GRADES UNLESS OTHERWISE NOTED.
7. 2.5% MAX SLOPE ON SODDED AREAS.



CONTRACTOR TO CONFIRM ALL DIMENSIONS AND REPORT ANY DISCREPANCIES TO CONTRACT ADMINISTRATOR PRIOR TO CONSTRUCTION. LOCATION OF UNDERGROUND STRUCTURES AS SHOWN ARE BASED ON THE BEST INFORMATION AVAILABLE BUT NO GUARANTEE IS GIVEN THAT ALL EXISTING UTILITIES ARE SHOWN OR THAT THE GIVEN LOCATIONS ARE EXACT. CONFIRMATION OF EXISTENCE AND EXACT LOCATION OF ALL SERVICES MUST BE OBTAINED FROM THE INDIVIDUAL UTILITIES BEFORE PROCEEDING WITH CONSTRUCTION.

| | | | | | | |
|---|-----------------------------|-------------|--|------|---|--|
| <p>THE CITY OF WINNIPEG Planning, Property and Development Department Planning and Land Use Division Unit 15 - 30 Fort Street, Winnipeg, MB, (R3C 4X5)</p> | DESIGNED BY | CHECKED BY | MANAGER, PARK AND OPEN SPACES | DATE | DRAWING TITLE Parc Lagimodiere Park Playground Redevelopment Grading Plan | DRAWING NO. S.88-B3 |
| | DRAWN BY IM | APPROVED BY | | | | |
| | HORIZ. SCALE VERT. SCALE | 1:300 | MANAGER, PLANNING AND LAND USE DIVISION | DATE | SITE ADDRESS 175 Royal Mint Drive | BID OPPORTUNITY NO. 185-2024 |
| | DATE | Jan 2024 | | | | |