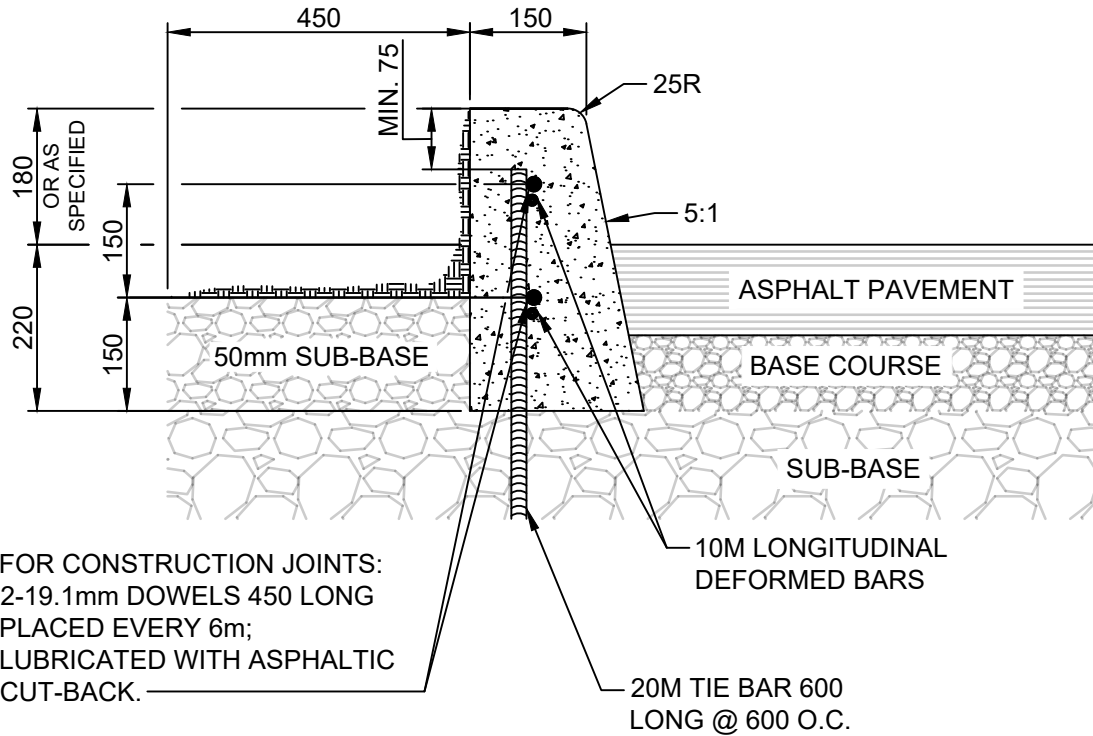


**APPENDIX 'B'**  
**VARIOUS CURB FOR ASPHALT PAVEMENT**



NOTES:

1. TRANSVERSE SAW CUT EVERY 3m OR AT PAVEMENT JOINTS
2. TRANSVERSE SAW CUTS ARE TO BE A MAXIMUM DEPTH OF 25mm

DIMENSIONS IN MILLIMETRES



**THE CITY OF WINNIPEG**  
PUBLIC WORKS DEPARTMENT

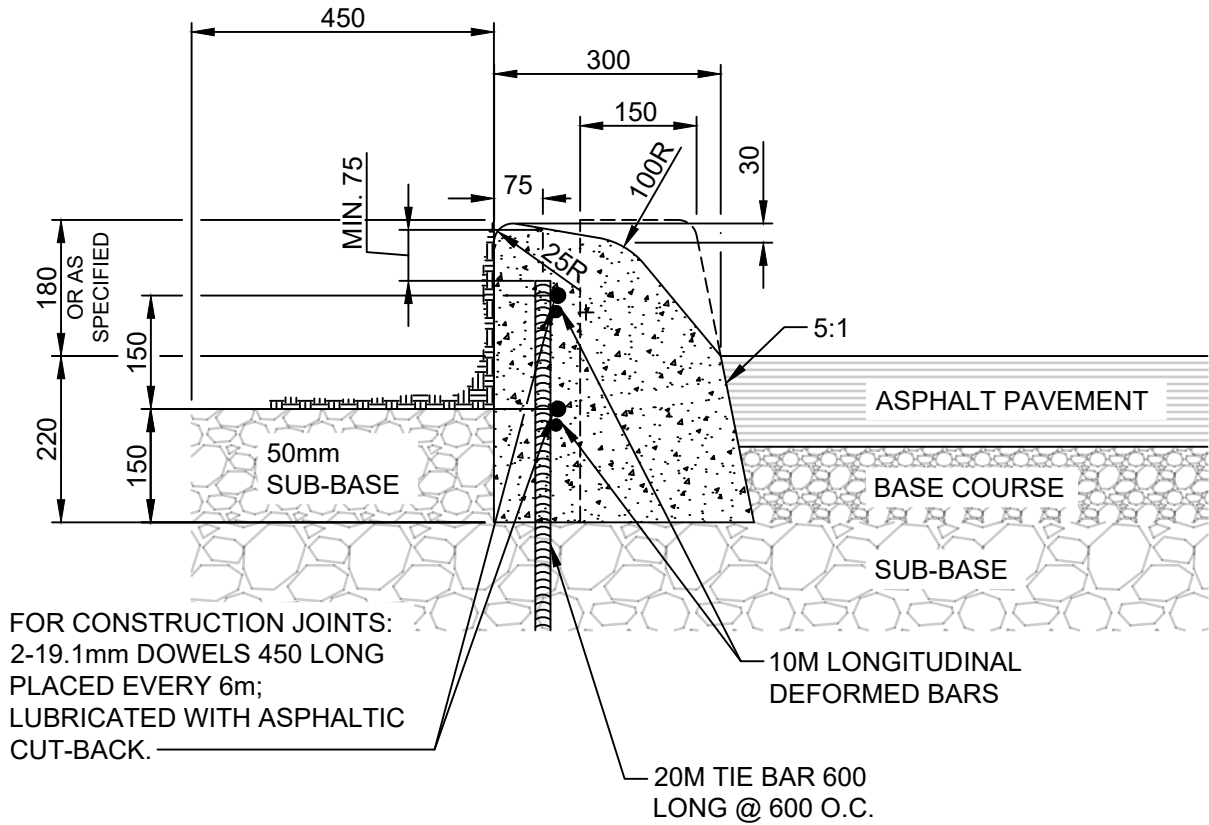
Reference Spec. No.  
CW 3325

**BARRIER CURB FOR  
ASPHALT PAVEMENT**

Revisions

No.	Date	Description	By

Designed By: A.G.	Drawn By: R.B.	Scale : <b>N.T.S</b>
Checked By: B.K.	Date: 2024-03-19	
Approved: PAVEMENT MANAGEMENT BRANCH		Drawing No. <b>SD-200A</b> <b>DRAFT</b>



NOTES:

1. TRANSVERSE SAW CUT EVERY 3m OR AT PAVEMENT JOINTS
2. TRANSVERSE SAW CUTS ARE TO BE A MAXIMUM DEPTH OF 25mm

DIMENSIONS IN MILLIMETRES



**THE CITY OF WINNIPEG**  
 PUBLIC WORKS DEPARTMENT

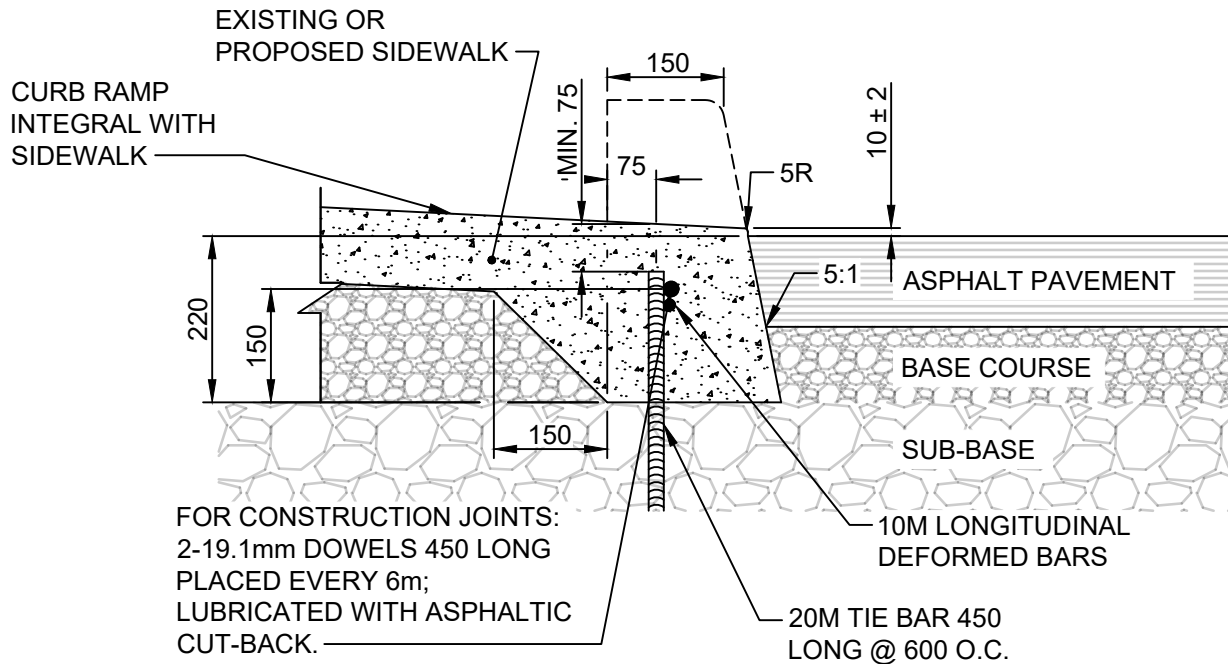
Reference Spec. No.  
 CW 3325

Revisions

No.	Date	Description	By

**MODIFIED BARRIER CURB  
 FOR ASPHALT PAVEMENT**

Designed By: A.G.	Drawn By: R.B.	Scale : <b>N.T.S</b>
Checked By: B.K.	Date: 2024-03-19	
Approved: PAVEMENT MANAGEMENT BRANCH		Drawing No. <b>SD-200B</b> <b>DRAFT</b>



NOTES:

1. TRANSVERSE SAW CUT EVERY 3m OR AT PAVEMENT JOINTS
2. TRANSVERSE SAW CUTS ARE TO BE A MAXIMUM DEPTH OF 25mm

DIMENSIONS IN MILLIMETRES



**THE CITY OF WINNIPEG**  
PUBLIC WORKS DEPARTMENT

Reference Spec. No.  
CW 3325

Revisions			
No.	Date	Description	By

**CURB RAMP FOR  
ASPHALT PAVEMENT**

Designed By:  
A.G.

Checked By:  
B.K.

Approved:  
PAVEMENT MANAGEMENT BRANCH

Drawn By:  
R.B.

Date:  
2024-03-19

Scale :  
**N.T.S**

Drawing No.  
**SD-200D**  
**DRAFT**