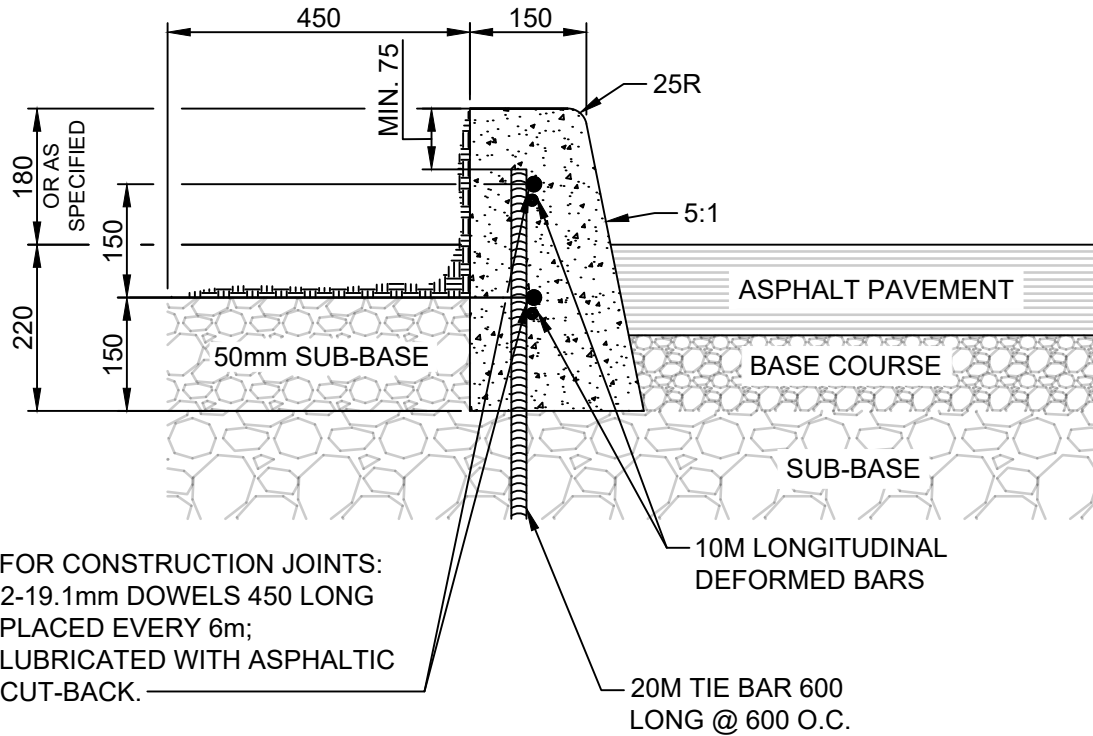


APPENDIX 'E'
VARIOUS CURB FOR ASPHALT PAVEMENT



NOTES:

1. TRANSVERSE SAW CUT EVERY 3m OR AT PAVEMENT JOINTS
2. TRANSVERSE SAW CUTS ARE TO BE A MAXIMUM DEPTH OF 25mm

DIMENSIONS IN MILLIMETRES



THE CITY OF WINNIPEG
PUBLIC WORKS DEPARTMENT

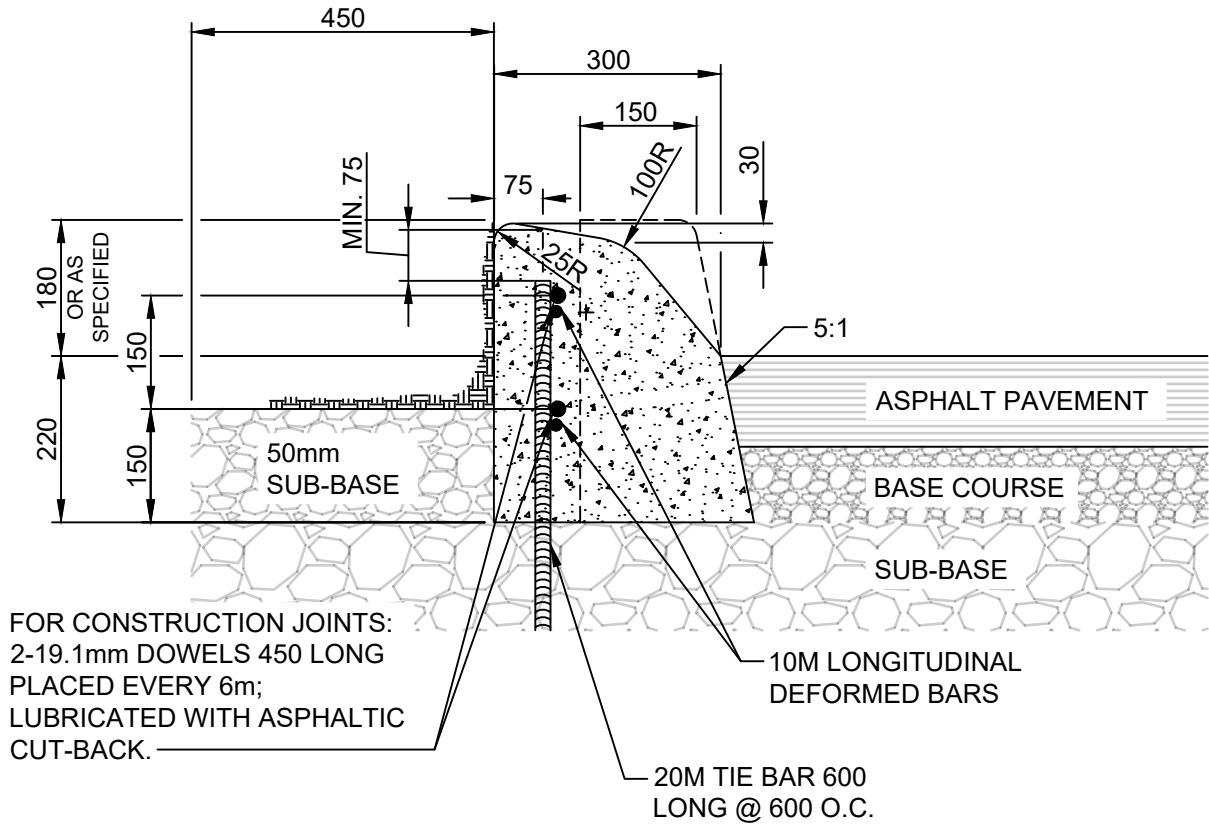
Reference Spec. No.
CW 3325

**BARRIER CURB FOR
ASPHALT PAVEMENT**

Revisions

No.	Date	Description	By


Designed By: A.G.	Drawn By: R.B.	Scale : N.T.S
Checked By: B.K.	Date: 2024-03-19	
Approved: PAVEMENT MANAGEMENT BRANCH		Drawing No. SD-200A DRAFT

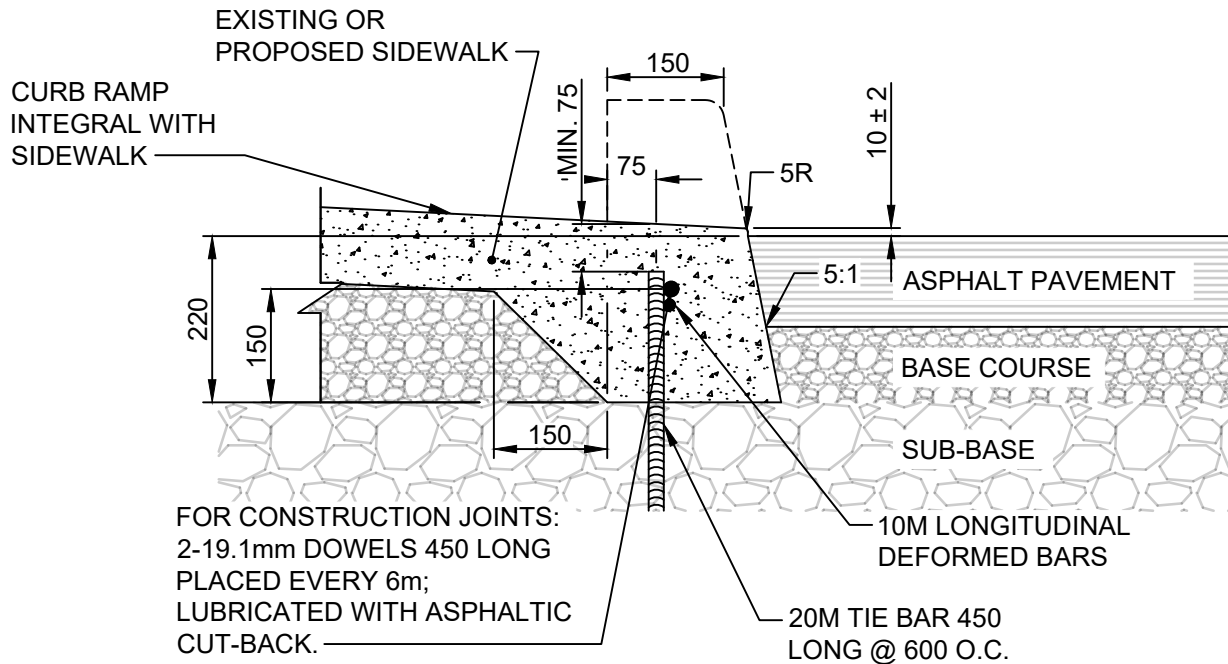


NOTES:

1. TRANSVERSE SAW CUT EVERY 3m OR AT PAVEMENT JOINTS
2. TRANSVERSE SAW CUTS ARE TO BE A MAXIMUM DEPTH OF 25mm

DIMENSIONS IN MILLIMETRES

 THE CITY OF WINNIPEG PUBLIC WORKS DEPARTMENT	Revisions			
Reference Spec. No. CW 3325				
MODIFIED BARRIER CURB FOR ASPHALT PAVEMENT	No.	Date	Description	By
	Designed By: A.G.		Drawn By: R.B.	Scale : N.T.S
	Checked By: B.K.		Date: 2024-03-19	Drawing No. SD-200B
Approved: PAVEMENT MANAGEMENT BRANCH			DRAFT	



NOTES:

1. TRANSVERSE SAW CUT EVERY 3m OR AT PAVEMENT JOINTS
2. TRANSVERSE SAW CUTS ARE TO BE A MAXIMUM DEPTH OF 25mm

DIMENSIONS IN MILLIMETRES



THE CITY OF WINNIPEG
PUBLIC WORKS DEPARTMENT

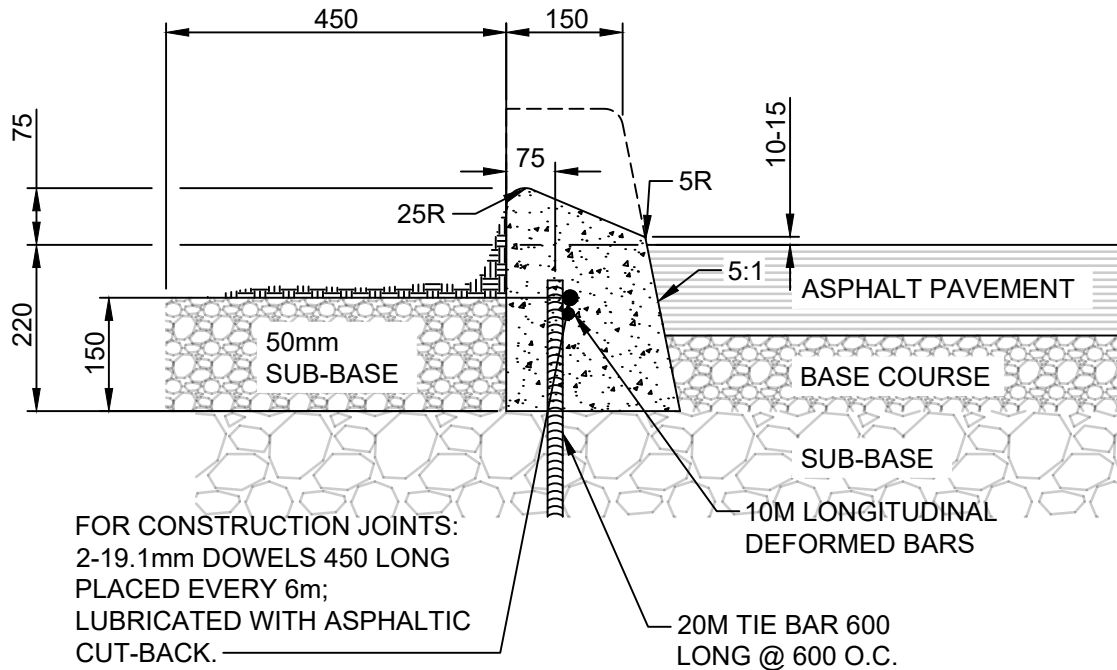
Reference Spec. No.
CW 3325

Revisions

No.	Date	Description	By

**CURB RAMP FOR
ASPHALT PAVEMENT**

Designed By: A.G.	Drawn By: R.B.	Scale : N.T.S
Checked By: B.K.	Date: 2024-03-19	
Approved: PAVEMENT MANAGEMENT BRANCH		Drawing No. SD-200D DRAFT



NOTES:

1. TRANSVERSE SAW CUT EVERY 3m OR AT PAVEMENT JOINTS
2. TRANSVERSE SAW CUTS ARE TO BE A MAXIMUM DEPTH OF 25mm

DIMENSIONS IN MILLIMETRES



THE CITY OF WINNIPEG
PUBLIC WORKS DEPARTMENT

Revisions			
No.	Date	Description	By

Reference Spec. No.
CW 3325

**75 mm LIP CURB FOR
ASPHALT PAVEMENT**

Designed By: A.G.	Drawn By: R.B.
Checked By: B.K.	Date: 2024-03-19
Approved: PAVEMENT MANAGEMENT BRANCH	

Scale :
N.T.S

Drawing No.
SD-200C
DRAFT