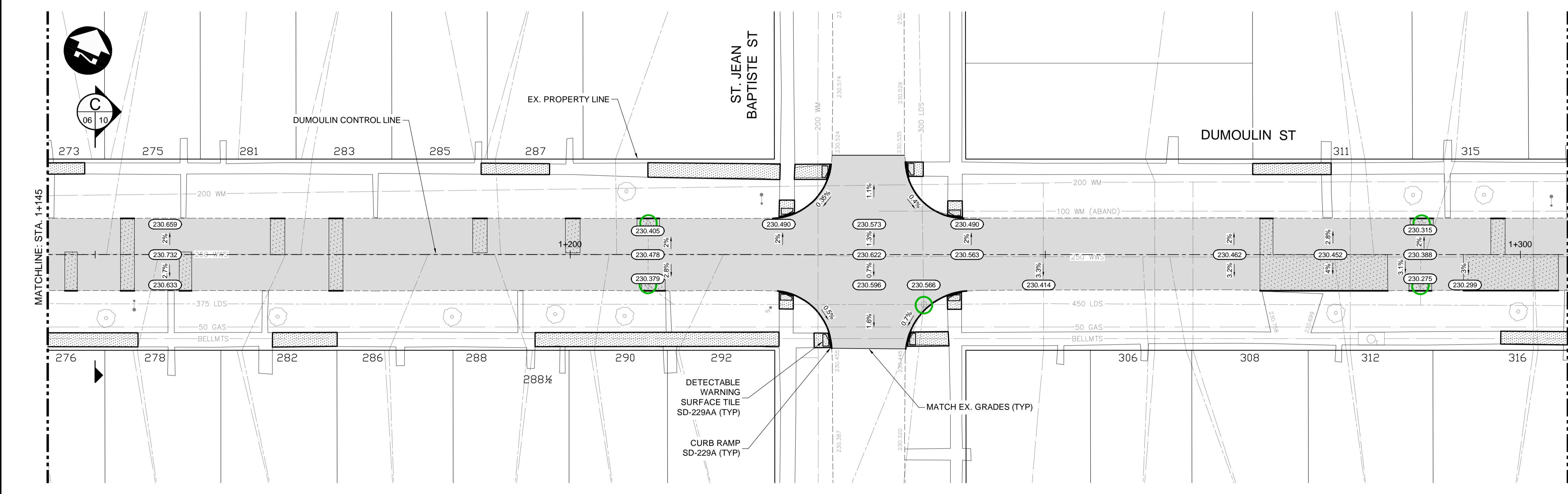


- CONSTRUCTION NOTES:**
- ISOLATE MISCELLANEOUS ITEMS IN NEW CONCRETE WORKS AS PER SD-228C.
 - ALL WORK AND MATERIALS TO BE IN ACCORDANCE WITH LATEST REVISION OF THE CITY OF WINNIPEG STANDARD CONSTRUCTION SPECIFICATIONS.
 - LEGAL PLAN AND UNDERGROUND INFORMATION FROM CITY OF WINNIPEG LBIS. CONTRACTOR TO VERIFY ALL UNDERGROUNDS IN THE FIELD.
 - CONTRACTOR TO TAKE PRECAUTIONARY STEPS TO AVOID DAMAGE FROM CONSTRUCTION ACTIVITIES TO TREES WITHIN THE LIMITS OF CONSTRUCTION.
 - LOCATION OF EXISTING SERVICES TO BE CONFIRMED IN THE FIELD BY THE CONTRACTOR.
 - INSTALL CB LEADS AT MIN. 1.0% SLOPE OR AS DIRECTED BY THE CONTRACT ADMINISTRATOR.
 - CONTRACTOR TO CONFIRM EXISTING LEAD INVERT ELEVATIONS PRIOR TO INSTALLATION.
 - ALL DIMENSIONS ARE TO BACK OF CURB.
 - LIMITS OF CURB AND SIDEWALK RECONSTRUCTION TO BE FINALIZED IN THE FIELD BY THE CONTRACT ADMINISTRATOR.
 - ADJUST ALL WATER VALVES, MANHOLES, CATCH BASINS, CATCH PITS AND WATER SHUT OFF VALVES TO GRADE.
 - ALL PRIVATE WALKWAYS TO BE ADJUSTED TO NEW SIDEWALK OR TOP OF CURB ELEVATION, AS REQUIRED.
 - STREET LIGHT STANDARDS, HYDRO POLES AND ANCHORS THAT REQUIRE TEMPORARY SUPPORT, REMOVAL OR REPLACEMENT, ARE TO BE DONE AT THE EXPENSE OF THE CONTRACTOR, AS NECESSARY.
 - FOR ROAD RECONSTRUCTIONS, INSTALL 6 m OF 150 mm SUBDRAIN TO CATCH BASINS IN BOTH DIRECTIONS PARALLEL TO ROADWAY AS PER SD-245 AND CAP ENDS.
 - FOR ROAD RECONSTRUCTIONS, ALL WATER MAIN SERVICES NEED TO BE INSULATED. ADDITIONALLY, ALL CATCH BASINS, MANHOLES AND LEAD PIPES LOCATED WITHIN 2.0 m OF A RESIDENTIAL SERVICE MUST BE INSULATED TO PROTECT THE SERVICE FROM POTENTIAL FUTURE FREEZING.
 - FOR ROAD RECONSTRUCTIONS, CURB REVEAL SHALL BE 180 mm UNLESS NOTED OTHERWISE. FOR ROAD REHABILITATIONS, CURB REVEAL SHALL BE 150 mm UNLESS NOTED OTHERWISE.
 - CONSTRUCT MODIFIED BARRIER CURB (SD-203B) AT RADI.
- REMOVALS / RELOCATES** (Red pentagon symbol)
REMOVALS / RELOCATES (BY OTHERS) (Blue pentagon symbol)
ADJUSTMENTS (Green circle symbol)
ADJUSTMENTS (BY OTHERS) (Orange circle symbol)
- ABBREVIATIONS:**
- | | | | |
|------|----------------|-------|-------------------|
| CONC | CONCRETE | HYDRO | HYDRO MANHOLE |
| ASP | ASPHALT | TEL | TELEPHONE MANHOLE |
| TYP | TYPICAL | WV | WATER VALVE |
| EX | EXISTING | MANH | MANHOLE |
| MH | MANHOLE | WV | WATER VALVE |
| WV | WATER VALVE | EL | ELEVATION |
| EL | ELEVATION | CB | CATCH BASIN |
| CB | CATCH BASIN | CP | CATCH PIT |
| CP | CATCH PIT | CI | CURB INLET |
| CI | CURB INLET | CL | CONTROL LINE |
| CL | CONTROL LINE | SL | STREET LIGHT |
| SL | STREET LIGHT | TS | TRAFFIC SIGNAL |
| TS | TRAFFIC SIGNAL | | |
- SYMBOLS:**
- | | |
|---|--------------------------|
| ○ | HYDRO MANHOLE |
| ○ | TELEPHONE MANHOLE |
| ○ | TRAFFIC SIGNAL SPICE PIT |
| ○ | WATER VALVE |
| ○ | HYDRANT |
| ○ | CURB STOP |
| ○ | GAS VALVE |
| ○ | HYDRO POLE |
| ○ | HYDRO POLE WITH LIGHT |
| ○ | STREET LIGHT |
| ○ | TRAFFIC SIGNAL |
| ○ | SIGNAL CONTROL BOX |
| ○ | BELLMETS PEDESTAL |
| ○ | TREE |
| ○ | IRON PROPERTY BAR |
| ○ | HYDRO GUY ANCHOR |



- METRIC**
- WHOLE NUMBERS INDICATE MILLIMETRES
 DECIMAL NUMBERS INDICATE METRES
- WARNING**
- IF POWER EQUIPMENT OR EXPLOSIVES ARE TO BE USED FOR EXCAVATION ON THIS PROJECT THE CONTRACTOR MUST:
- NOTIFY THE GAS COMPANY OF THE PROPOSED LOCATION OF EXCAVATION.
 - TAKE PRECAUTION TO AVOID DAMAGE TO GAS COMPANY INSTALLATIONS SEE PROVINCIAL REGULATION 210/72 FOR DETAILS.
 - OBTAIN EXCAVATION PERMITS PRIOR TO CONSTRUCTION.

ENGINEERS GEOSCIENTISTS MANITOBA
 Certificate of Authorization
Dillon Consulting Limited (MB)
 No. 1789 Date: 2024/05/10

150 WM	WATERMAIN	150 WM	CONCRETE ROAD	PROFILE	UNDERGROUND STRUCTURES	B.M. ELEV.	DESIGNED BY	TJH/MRD	DILLON CONSULTING	ENGINEER'S SEAL PROVINCE OF MANITOBA 2024-05-10 M. R. DOUSET Member 22308 REGISTERED PROFESSIONAL ENGINEER	THE CITY OF WINNIPEG PUBLIC WORKS DEPARTMENT	2024 LOCAL STREETS RENEWAL PROGRAM DUMOULIN AVENUE AND VARIOUS OTHER LOCATIONS	CITY DRAWING NUMBER				
300 LDS	LAND DRAINAGE SEWER	300 LDS	ASPHALT ROAD	NORTH/WEST GUTTER	SUPV. U/G STRUCTURES	DATE	DRAWN BY	TJH						RELEASED FOR CONSTRUCTION	CONSULTANT PROJECT NUMBER 23-7222	DUMOULIN STREET (STA. 1+145 TO 1+305)	SHEET 06 OF 10
250 WWS	WASTE WATER SEWER	250 WWS	CONC ROAD W/ASP OVERLAY	SOUTH/EAST GUTTER	LOCATION OF UNDERGROUND STRUCTURES AS SHOWN ARE BASED ON THE BEST INFORMATION AVAILABLE, BUT NO GUARANTEE IS GIVEN THAT ALL EXISTING UTILITIES ARE SHOWN OR THAT THE GIVEN LOCATIONS ARE EXACT. CONFIRMATION OF EXISTENCE AND EXACT LOCATION OF ALL SERVICES MUST BE OBTAINED FROM THE INDIVIDUAL UTILITIES BEFORE PROCEEDING WITH CONSTRUCTION.	DATE	CHECKED BY	MRD									
HYDRO	HYDRO	BELLMETS	CONCRETE SIDEWALK	NORTH/WEST MED. GUTTER			APPROVED BY	TJP	HOR. SCALE	1:250							
BELLMETS	BELLMETS	100 GAS	ASPHALT PATH	SOUTH/EAST MED. GUTTER					VERTICAL	1:10							
100 GAS	GAS	T.S.	LANDSCAPING FEATURE	NORTH/WEST DITCH													
T.S.	TRAFFIC SIGNALS	S.L.	GRASS/SOD	SOUTH/EAST DITCH													
S.L.	STREET LIGHTS		ELEVATION	NORTH/WEST SIDEWALK													
	MANHOLE		PROPERTY LINE	SOUTH/EAST SIDEWALK													
	CATCH BASIN		CURB RAMP														
	CATCH PIT		DETECTABLE TILE														
EXISTING	LEGEND-PLAN	PROPOSED	EXISTING	LEGEND-PLAN	PROPOSED	EXISTING	LEGEND-PROFILE	PROPOSED									