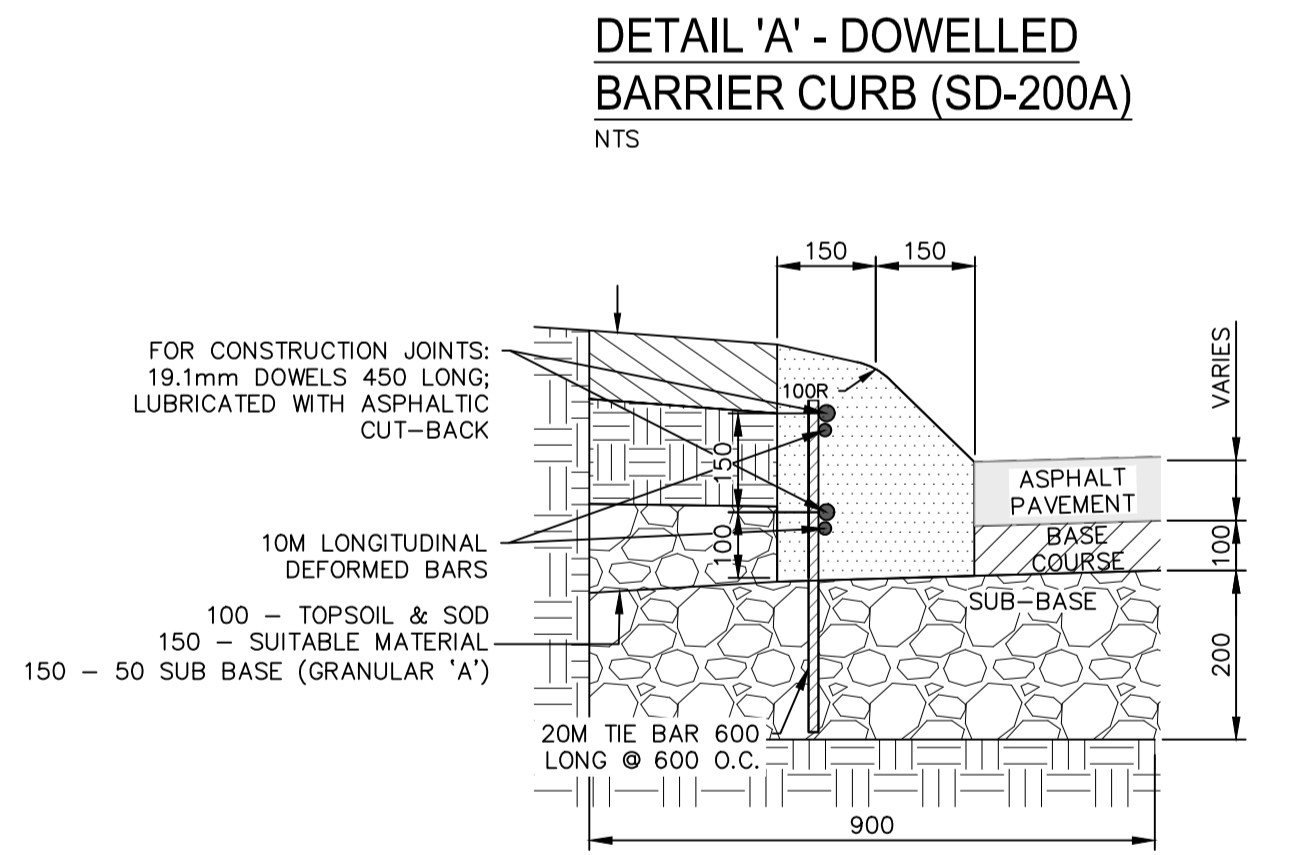
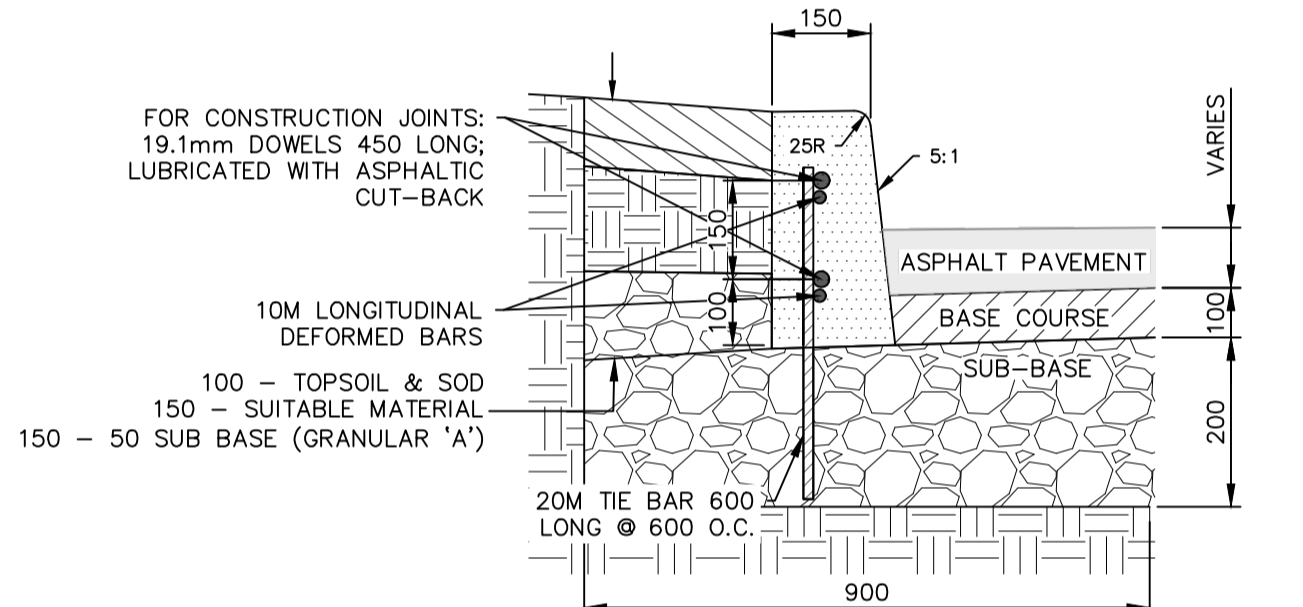
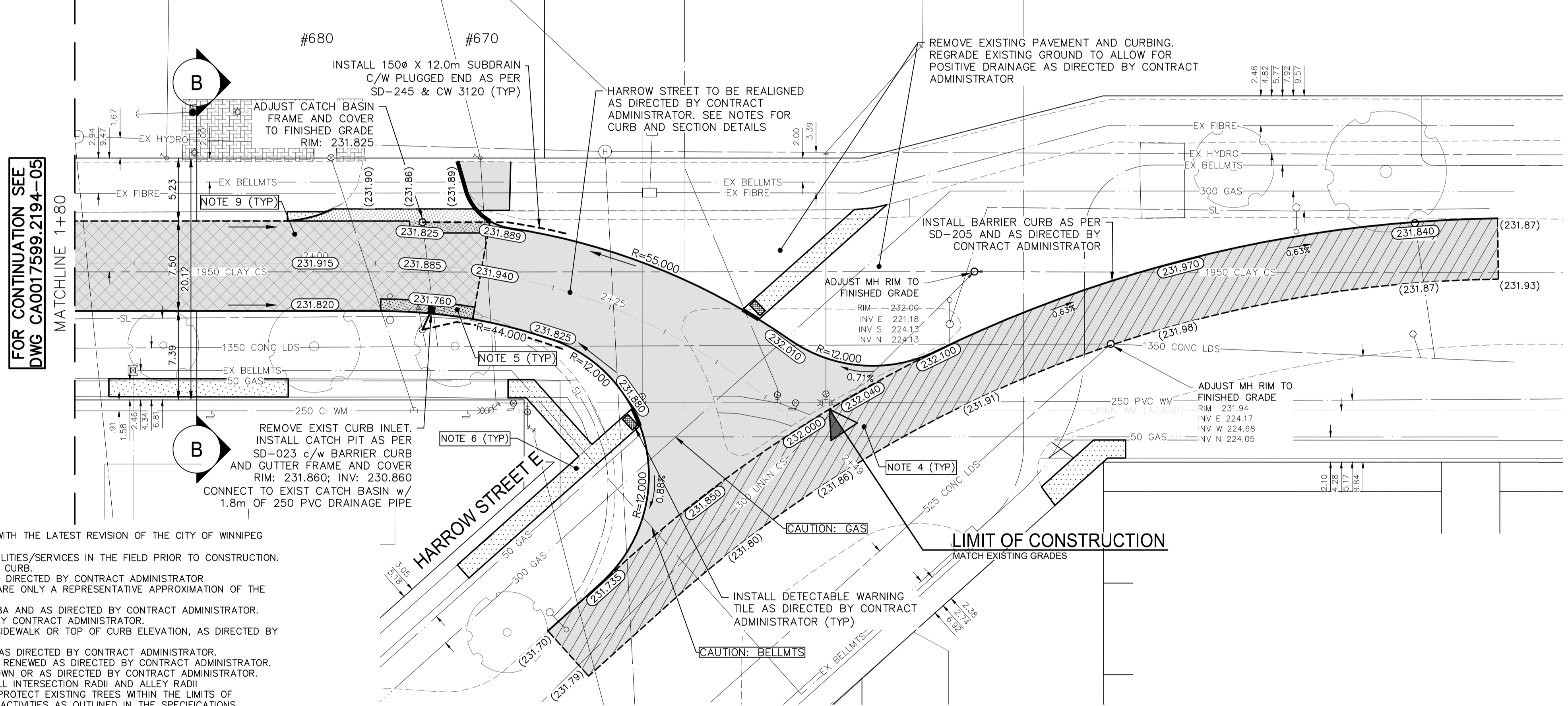
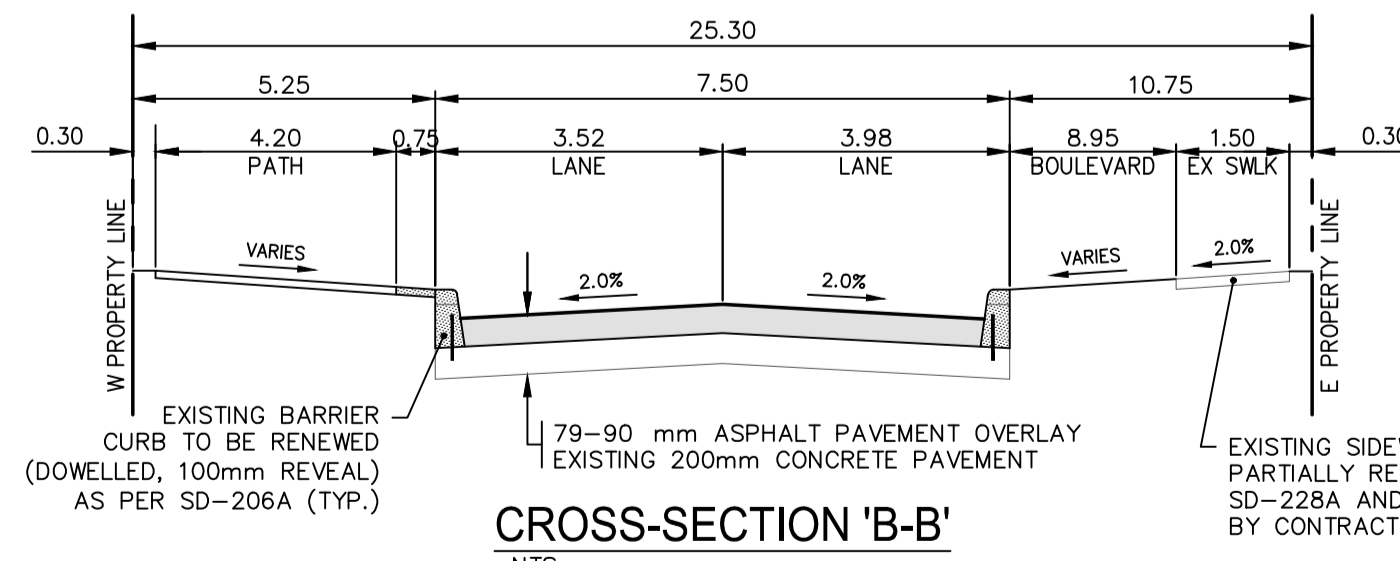


HARROW STREET



- NOTES:**
- ALL WORK AND MATERIALS TO BE IN ACCORDANCE WITH THE LATEST REVISION OF THE CITY OF WINNIPEG STANDARD CONSTRUCTION SPECIFICATIONS.
 - CONTRACTOR TO CONFIRM THE LOCATION OF ALL UTILITIES/SERVICES IN THE FIELD PRIOR TO CONSTRUCTION.
 - ALL ROADWAY DIMENSIONS SHOWN ARE TO BACK OF CURB.
 - EXISTING ASPHALT TO BE PLANED AS SHOWN OR AS DIRECTED BY CONTRACT ADMINISTRATOR.
 - 150mm PARTIAL CONCRETE SLAB PATCHES SHOWN ARE ONLY A REPRESENTATIVE APPROXIMATION OF THE TENDERED QUANTITIES.
 - EXISTING SIDEWALK TO BE RENEWED AS PER SD-228A AND AS DIRECTED BY CONTRACT ADMINISTRATOR.
 - RENEW CURB AS PER SD-206A AND AS DIRECTED BY CONTRACT ADMINISTRATOR.
 - ALL PRIVATE WALKWAYS TO BE ADJUSTED TO NEW SIDEWALK OR TOP OF CURB ELEVATION, AS DIRECTED BY THE CONTRACT ADMINISTRATOR.
 - INSTALL PAVEMENT REPAIR FABRIC AS SHOWN AND AS DIRECTED BY CONTRACT ADMINISTRATOR.
 - EXISTING LIP CURB AT PRIVATE APPROACHES TO BE RENEWED AS DIRECTED BY CONTRACT ADMINISTRATOR.
 - PAVEMENT REPAIR FABRIC TO BE INSTALLED AS SHOWN OR AS DIRECTED BY CONTRACT ADMINISTRATOR.
 - MODIFIED BARRIER CURBS TO BE CONSTRUCTED AT ALL INTERSECTION RADII AND ALLEY RADII.
 - CONTRACTORS TO TAKE PRECAUTIONARY STEPS TO PROTECT EXISTING TREES WITHIN THE LIMITS OF CONSTRUCTION FROM DAMAGE FROM CONSTRUCTION ACTIVITIES AS OUTLINED IN THE SPECIFICATIONS.
 - LAMP STANDARDS, HYDRO POLES, AND ANCHORS THAT REQUIRE TEMPORARY SUPPORT, REMOVAL OR REPLACEMENT, TO BE DONE SO AT THE EXPENSE OF THE CONTRACTOR AS NECESSARY.
 - ALL BOULEVARDS TO BE SODDED UNLESS OTHERWISE NOTED.
 - ADJUST ALL WATER VALVES, HYDRANTS, MANHOLES, AND CATCH BASINS IN WORK AREA TO GRADE.
 - HARROW STREET REALIGNMENT: CONSTRUCT REALIGNMENT WITH 50mm ASPHALT PAVEMENT (TYPE1A), 75mm ASPHALT PAVEMENT (TYPE II), 100mm - BASE COURSE (GRANULAR A), 300mm - 50mm SUB BASE COURSE (GRANULAR A), CLASS A GEOTRID AND SEPARATION GEOTEXTILE FABRIC. BARRIER CURB FOR ASPHALT (180mm REVEAL) TO BE USED ON STRAIGHT SECTIONS AND MODIFIED BARRIER CURB FOR ASPHALT (180 REVEAL) TO BE USED AT INTERSECTION RADII.



EXISTING	LEGEND-PLAN	PROPOSED	EXISTING	LEGEND-PLAN	PROPOSED	EXISTING	LEGEND-PROFILE	PROPOSED
---	WATER MAIN	---	---	ANCHOR	---	---	---	---
---	LAND DRAINAGE SEWER	---	---	HYDRO POLE & LIGHT STANDARD	---	---	---	---
---	WASTE WATER SEWER	---	---	LIGHT STANDARD OR TRAFFIC SIGNAL	---	---	---	---
---	HYDRO	---	---	HYDRO POLE	---	---	---	---
---	BELL/MTS	---	---	CURB RAMP	---	---	---	---
---	GAS	---	---	DETECTABLE WARNING SURFACE TILE	---	---	---	---
---	SIGNALS	---	---	EDGE OF SIDEWALK	---	---	---	---
---	MANHOLE	---	---	FENCE	---	---	---	---
---	CATCH BASIN	---	---	PROPERTY LINE	---	---	---	---
---	CURB INLET	---	---	EDGE OF ASPHALT	---	---	---	---
---	UTILITIES ADJUSTED	---	---	EDGE OF CONCRETE	---	---	---	---
---	PLUG	---	---	MODIFIED BARRIER CURB	---	---	---	---
---	HYDRANT	---	---	BARRIER CURB	---	---	---	---
---	VALVE	---	---	BARRIER CURB AND GUTTER	---	---	---	---
---	CURB STOP	---	---	CONC SIDEWALK	---	---	---	---
---	IRON BAR	---	---	CONCRETE SLAB	---	---	---	---
#111	CIVIC ADDRESS	---	---	ASPHALT	---	---	---	---
(231.00)	PAVEMENT GRADE	(231.000)	---	MILLED SURFACE	---	---	---	---
230.99	GROUND GRADE	---	---	PAVEMENT REPAIR FABRIC	---	---	---	---
---	EXISTING	---	---	---	---	---	---	---

LOCATIONS APPROVED UNDERGROUND STRUCTURES

SIGNED BY: _____ DATE: _____

NO. REVISIONS: _____ DATE: _____ BY: _____

LOCATION OF UNDERGROUND STRUCTURES AS SHOWN ARE BASED ON THE BEST INFORMATION AVAILABLE BUT NO GUARANTEE IS GIVEN THAT ALL EXISTING UTILITIES ARE SHOWN OR THAT THE GIVEN LOCATIONS ARE EXACT CONFIRMATION OF EXISTENCE AND EXACT LOCATION OF ALL SERVICES MUST BE OBTAINED FROM THE INDIVIDUAL UTILITIES BEFORE PROCEEDING

WSP

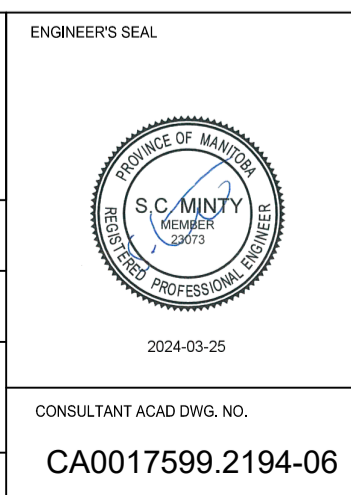
G.M. TOP OF HYDRANT, SOUTH SIDE OF STREET ON SPARLING AVE, FIRST HYDRANT
ELEV. 233.272

DESIGNED BY: R.H. CHECKED BY: R.H.
DRAWN BY: R.H. APPROVED BY: S.S.

HOR. SCALE: 1:250
VERTICAL: 1:10

ISSUED FOR TENDER: 20240302 R.H.
DATE: DECEMBER 2023

WSP Canada Inc.
1600 Buffalo Place
Winnipeg, MB R3T 6B8
t. 204.477.6650
f. 204.474.2864
www.wsp.com



FOR TENDER PURPOSES ONLY
NOT FOR CONSTRUCTION

THE CITY OF WINNIPEG
PUBLIC WORKS DEPARTMENT
ENGINEERING SERVICES DIVISION

2024 LOCAL STREET RENEWALS
HARROW STREET

MAJOR REHABILITATION
STA. 1+80 TO STA. 2+49.10

TENDER NO. 192-2024

CITY DRAWING NUMBER: SHEET 06 OF 15

CONSULTANT ACAD. DWG. NO. CA0017599.2194-06

Mar 22, 2024 - 2:48pm
P:\2023\CA0017599.2194 - 2024 Local Street Renewals_751-2023\05.07 Drawings\03_Work_Dwg\CA0017599.2194_Harrow_ST_Plan&Profile.dwg - tab:192-2024_Drawing_CA0017599.2194-06-R0