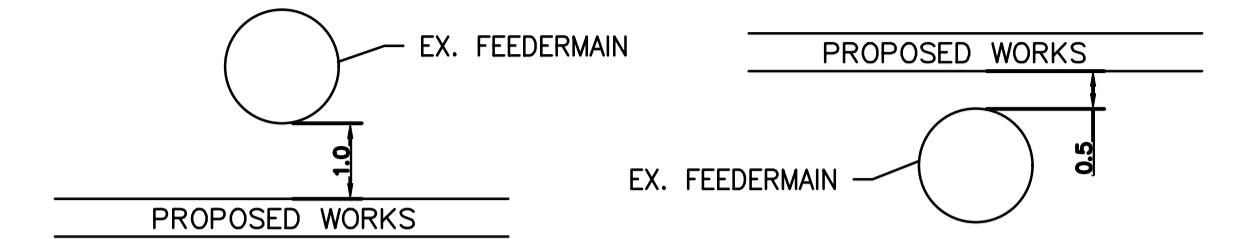
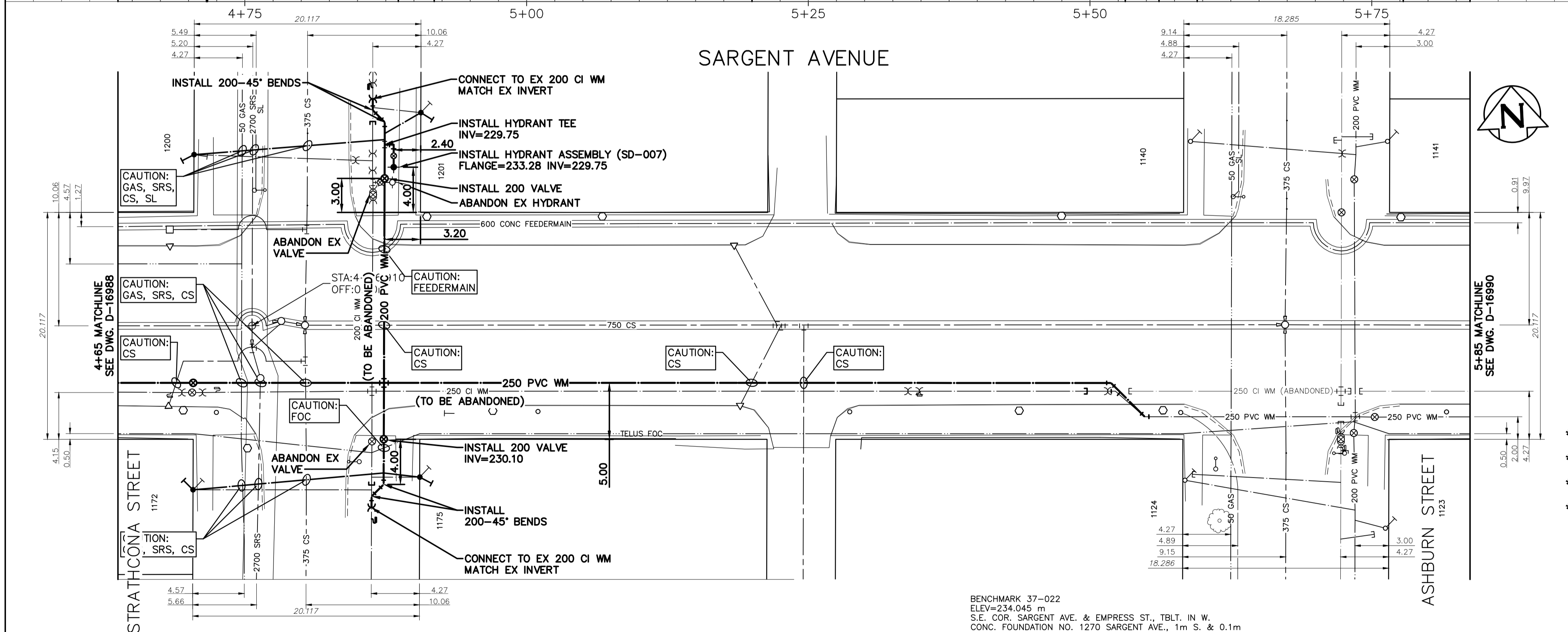
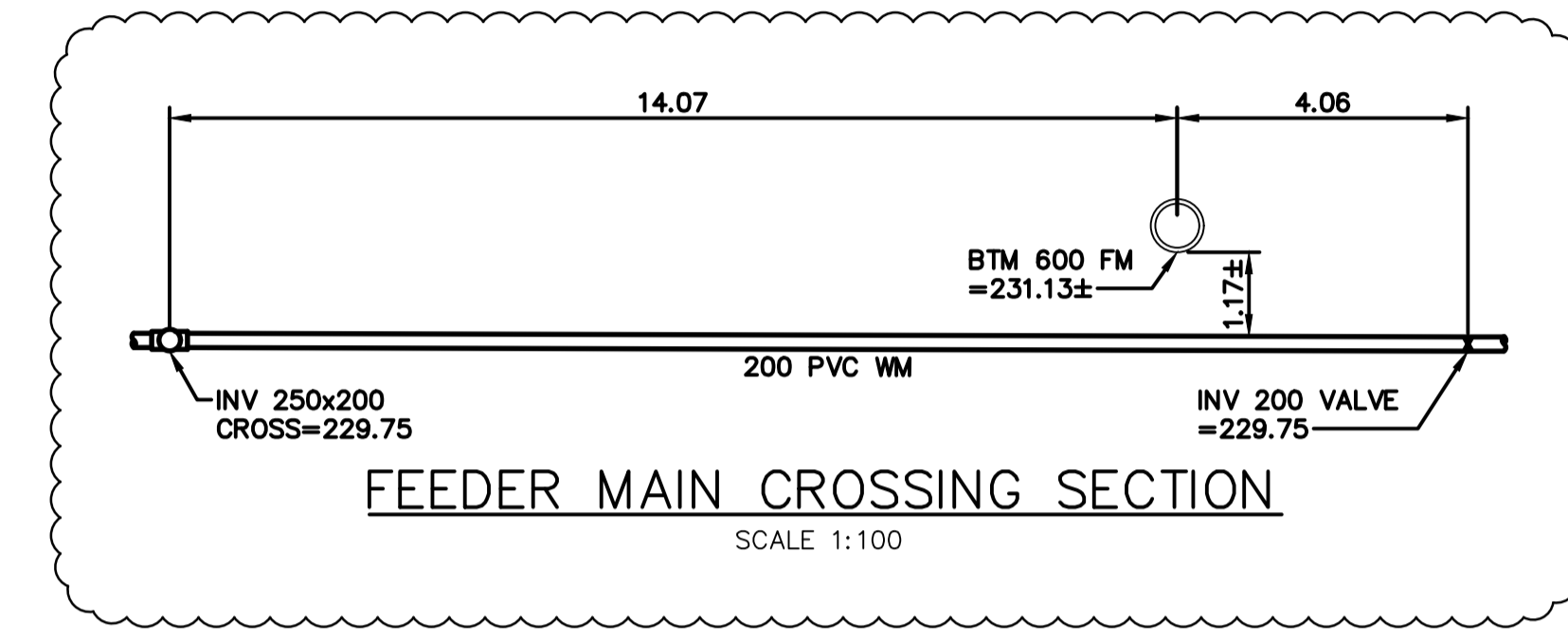


- CAUTION: FEEDERMAIN
- CONTACTED THE DEPARTMENT'S CONSTRUCTION SERVICE COORDINATOR AT 204-986-4289 7 DAYS PRIOR TO THE COMMENCEMENT OF CONSTRUCTION TO ARRANGE FOR AN INSPECTION.
 - PRIOR TO ANY CONSTRUCTION THE FEEDERMAIN WAS EXPOSED BY A SOFT DIG METHOD SO AS TO CONFIRM DEPTH AND LOCATION.
 - A MINIMUM CLEARANCE OF 1.0 METER WAS PROVIDED BETWEEN THE UNDERSIDE OF THE FEEDERMAIN AND THE TOP OF THE PROPOSED WORKS. THIS INSTALLATION BY TRENCHLESS METHOD ONLY.



- A MINIMUM CLEARANCE OF 0.5 METERS WAS PROVIDED BETWEEN THE UNDERSIDE OF THE PROPOSED WORKS AND THE TOP OF THE EXISTING FEEDERMAIN. BY TRENCHLESS OR OPEN TRENCH.
- A SHAFT MUST BE EXCAVATED BY SOFT DIG METHODS 4.0 METERS FROM THE CENTRELINE OF FEEDERMAIN TO CONFIRM THE ALIGNMENT AND THE ELEVATION OF THE DRILLING ROD BEFORE IT CROSSED OVER OR UNDER THE FEEDERMAIN. THIS CONFIRMATION MUST BE WITNESSED BY A CITY REPRESENTATIVE.



WATER SERVICE INFORMATION					
ADDRESS	PIPE SIZE & MATERIAL (STREET)	PIPE SIZE & MATERIAL (PROPERTY)	STOP COCK LOCATION SHORT & LONG MEASUREMENT	CORP. LOCATION FROM STOP COCK	REMARKS
* 1175 STRATHCONA ST	20 LEAD	20 LEAD	4.5' SNHL & 11' SSL SARGENT AV	OPP SC	RENEW SERVICE
* 1172 STRATHCONA ST	20 LEAD	20 LEAD	7' SNHL & 14.7' SSL SARGENT AV	OPP SC	RENEW SERVICE
* 1200 STRATHCONA ST	20 LEAD	20 LEAD	3' SNHL & 14' NNL SARGENT AV	0.5m S CURB STOP	RENEW SERVICE
* 1201 STRATHCONA ST	20 LEAD	20 LEAD	12' NSHL & 29' NNL SARGENT AV	1.5' N SC	RENEW SERVICE
1123 ASHBURN ST	20 CU	20 CU	4.92m N/SSL & 7.93m S/SL SARGENT AVE	0.7m N/C/S	OUTSIDE LIMITS
1124 ASHBURN ST	20 CU	20 LEAD	3.64m N/SSL & 3.73m S/SL SARGENT AVE	2.6m S/C/S	OUTSIDE LIMITS
1140 ASHBURN ST	20 CU	20 CU	6.3m N/SSL & 6.3m NNL SARGENT AVE	1.2m S/C/S	OUTSIDE LIMITS
1141 ASHBURN ST	20 CU	20 CU	6.3m N/SSL & 6.3m NNL SARGENT AVE	0.5m S/C/S	OUTSIDE LIMITS

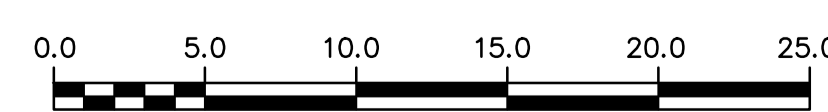
* SERVICES TO BE RENEWED TO PL

BENCHMARK 37-022
 ELEV=234.045 m
 S.E. COR. SARGENT AVE. & EMPRESS ST., TBLT. IN W.
 CONC. FOUNDATION NO. 1270 SARGENT AVE., 1m S. & 0.1m
 BELOW CONC. BLOCKS OF N.W. COR. OF BLDG.

NOTE: CHAINAGES SHOWN ARE ALONG CENTERLINE OF ROW

NOTE: VALVES TO BE INSTALLED COUNTER-CLOCKWISE TO CLOSE

FOR INDEX SEE D-16984



METRIC
 WHOLE NUMBERS INDICATE MILLIMETRES
 DECIMALIZED NUMBERS INDICATE METRES

ENGINEERS
GEOSCIENTISTS
MANITOBA
 Certificate of Authorization
 Stantec Consulting Ltd.
 No. 1301

LOCATION APPROVED
 UNDERGROUND STRUCTURES

SUPV. U/G STRUCTURES COMMITTEE DATE

NOTE:
 LOCATION OF UNDERGROUND STRUCTURES AS SHOWN ARE BASED ON THE BEST INFORMATION AVAILABLE BUT NO GUARANTEE IS GIVEN THAT ALL EXISTING UTILITIES ARE SHOWN OR THAT THE GIVEN LOCATIONS ARE EXACT. CONFIRMATION OF EXISTENCE AND EXACT LOCATION OF ALL SERVICES MUST BE OBTAINED FROM THE INDIVIDUAL UTILITIES BEFORE PROCEEDING WITH CONSTRUCTION.

VERTICAL DATUM: CGVD28 (HT2.0 Geoid)
 HORIZONTAL DATUM: NAD83 (June 1990), Zone 14

NO.	REVISIONS	DATE	BY
01	ISSUED FOR ADDENDUM 1	2024.04.29	R.S.
00	ISSUED FOR TENDER	2024.04.25	R.S.

Stantec

DESIGNED BY: R.S. CHECKED BY: W.B.
 DRAWN BY: W.A. APPROVED BY: R.S.
 SCALE: HORIZONTAL 1:250 VERTICAL 1:50
 RELEASED FOR CONSTRUCTION: R.L. DATE: 2024.04.25
 PLOT DATE: 2024.04.29

ENGINEER'S SEAL

CONSULTANT DRAWING NUMBER
C-205

THE CITY OF WINNIPEG
 WATER AND WASTE DEPARTMENT
 ENGINEERING DIVISION

2024 WATER MAIN RENEWALS
 CONTRACT 8

SARGENT AVENUE
 6.7 W OF STRATHCONA STREET TO
 7.1 E OF ASHBURN STREET

SHEET 7 OF 10
 CITY DRAWING NUMBER
D-16989