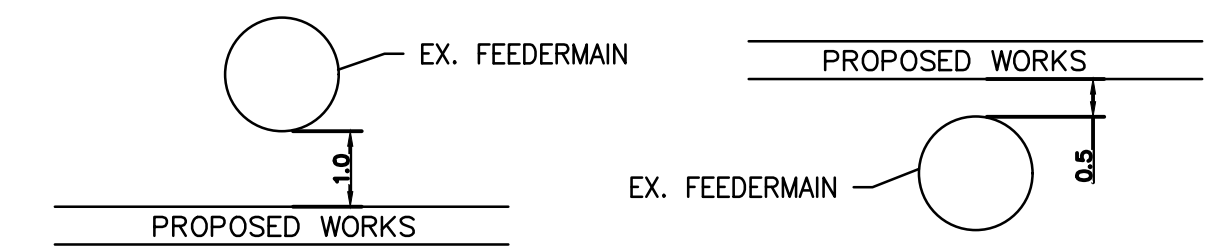
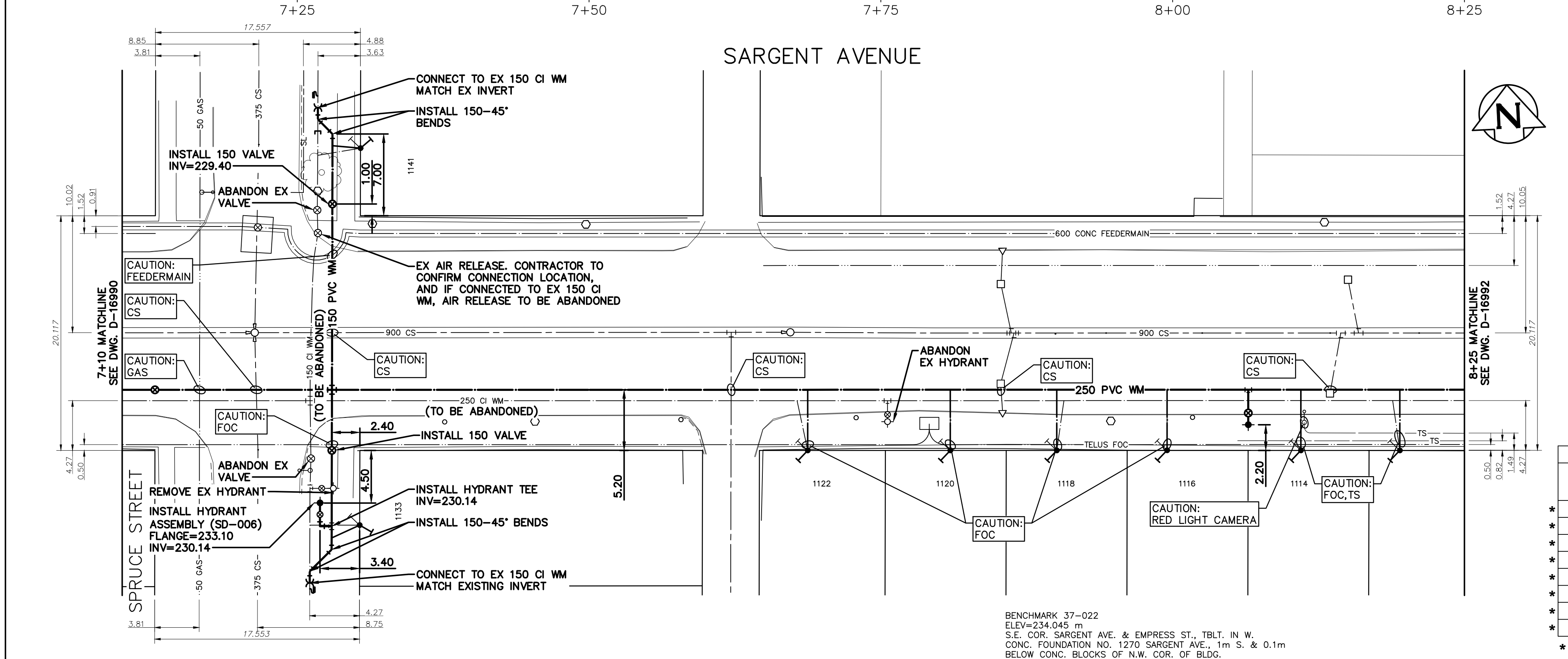
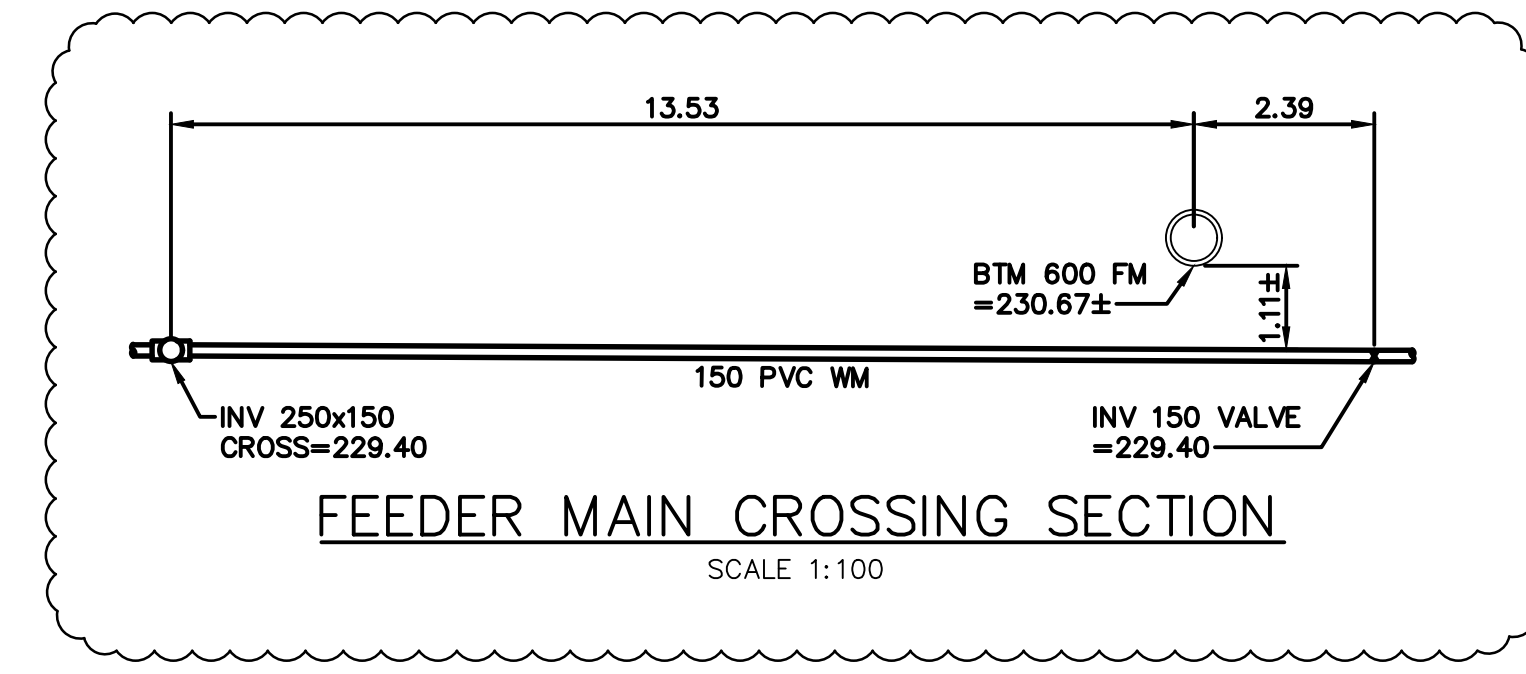


CAUTION: FEEDERMAIN
 - CONTACTED THE DEPARTMENT'S CONSTRUCTION SERVICE COORDINATOR AT 204-986-4289 7 DAYS PRIOR TO THE COMMENCEMENT OF CONSTRUCTION TO ARRANGE FOR AN INSPECTION.
 - PRIOR TO ANY CONSTRUCTION THE FEEDERMAIN WAS EXPOSED BY A SOFT DIG METHOD SO AS TO CONFIRM DEPTH AND LOCATION.
 - A MINIMUM CLEARANCE OF 1.0 METER WAS PROVIDED BETWEEN THE UNDERSIDE OF THE FEEDERMAIN AND THE TOP OF THE PROPOSED WORKS. THIS INSTALLATION BY TRENCHLESS METHOD ONLY.



- A MINIMUM CLEARANCE OF 0.5 METERS WAS PROVIDED BETWEEN THE UNDERSIDE OF THE PROPOSED WORKS AND THE TOP OF THE EXISTING FEEDERMAIN. BY TRENCHLESS OR OPEN TRENCH.
 - A SHAFT MUST BE EXCAVATED BY SOFT DIG METHODS 4.0 METERS FROM THE CENTRELINE OF FEEDERMAIN TO CONFIRM THE ALIGNMENT AND THE ELEVATION OF THE DRILLING ROD BEFORE IT CROSSED OVER OR UNDER THE FEEDERMAIN. THIS CONFIRMATION MUST BE WITNESSED BY A CITY REPRESENTATIVE.



WATER SERVICE INFORMATION					
ADDRESS	PIPE SIZE & MATERIAL (STREET)	PIPE SIZE & MATERIAL (PROPERTY)	STOP COCK LOCATION SHORT & LONG MEASUREMENT	CORP. LOCATION FROM STOP COCK	REMARKS
* 1112 SARGENT AV	20 LEAD	20 LEAD	5.8' EWHL & 59.5' WWL CLIFTON ST	2' W SC	RENEW SERVICE
* 1114 SARGENT AV	20 LEAD	20 LEAD	12' EWHL & 87' WWL CLIFTON ST	OPP SC	RENEW SERVICE
* 1116 SARGENT AV	20 LEAD	20 LEAD	5' EWHL & 227' EEL SPRUCE ST	OPP SC	RENEW SERVICE
* 1118 SARGENT AV	20 LEAD	20 LEAD	10' EWHL & 196' EEL SPRUCE ST	2' E SC	RENEW SERVICE
* 1120 SARGENT AV	20 LEAD	20 LEAD	10.5' EWHL & 166' EEL SPRUCE ST	OPP SC	RENEW SERVICE
* 1122 SARGENT AV	20 LEAD	20 LEAD	8' EWHL & 126' EEL SPRUCE ST	3' W SC	RENEW SERVICE
* 1133 SPRUCE ST	20 LEAD	12 LEAD	9.5' NSHL & 21' SSL SARGENT AV	OPP SC	RENEW SERVICE
* 1141 SPRUCE ST	20 LEAD	20 CU	5.5' NSHL & 19' NNL SARGENT AV	2' S SC	RENEW SERVICE

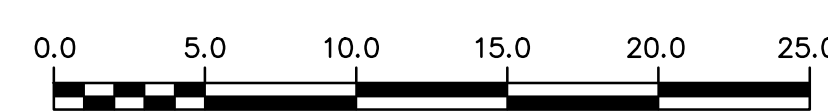
* SERVICES TO BE RENEWED TO PL

BENCHMARK 37-022
 ELEV=234.045 m
 S.E. COR. SARGENT AVE. & EMPRESS ST., TBLT. IN W. CONC. FOUNDATION NO. 1270 SARGENT AVE., 1m S. & 0.1m BELOW CONC. BLOCKS OF N.W. COR. OF BLDG.

NOTE: CHAINAGES SHOWN ARE ALONG CENTERLINE OF ROW

NOTE: VALVES TO BE INSTALLED COUNTER-CLOCKWISE TO CLOSE

FOR INDEX SEE D-16984



METRIC
 WHOLE NUMBERS INDICATE MILLIMETRES
 DECIMALIZED NUMBERS INDICATE METRES

ENGINEERS GEOSCIENTISTS MANITOBA
 Certificate of Authorization
 Stantec Consulting Ltd.
 No. 1301

LOCATION APPROVED UNDERGROUND STRUCTURES
 SUPV. U/G STRUCTURES COMMITTEE DATE
 NOTE:
 LOCATION OF UNDERGROUND STRUCTURES AS SHOWN ARE BASED ON THE BEST INFORMATION AVAILABLE BUT NO GUARANTEE IS GIVEN THAT ALL EXISTING UTILITIES ARE SHOWN OR THAT THE GIVEN LOCATIONS ARE EXACT. CONFIRMATION OF EXISTENCE AND EXACT LOCATION OF ALL UTILITIES MUST BE OBTAINED FROM THE INDIVIDUAL UTILITIES BEFORE PROCEEDING WITH CONSTRUCTION.

NO.	REVISIONS	DATE	BY
01	ISSUED FOR ADDENDUM 1	2024.04.29	R.S.
00	ISSUED FOR TENDER	2024.04.25	R.S.

Stantec

DESIGNED BY: R.S. CHECKED BY: W.B.
 DRAWN BY: W.A. APPROVED BY: R.S.
 SCALE: HORIZONTAL 1:250 VERTICAL 1:50
 DATE: 2024.04.25

ENGINEER'S SEAL
 CONSULTANT DRAWING NUMBER: C-207
 TENDER NUMBER: 193-2024

THE CITY OF WINNIPEG
 WATER AND WASTE DEPARTMENT
 ENGINEERING DIVISION

2024 WATER MAIN RENEWALS
 CONTRACT 8

SARGENT AVENUE
 2.9 W OF SPRUCE STREET TO
 94.6 E OF SPRUCE STREET

SHEET 9 OF 10
 CITY DRAWING NUMBER: D-16991