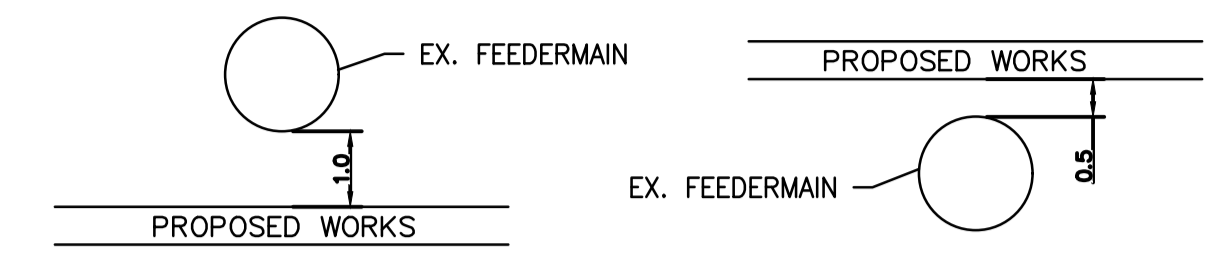
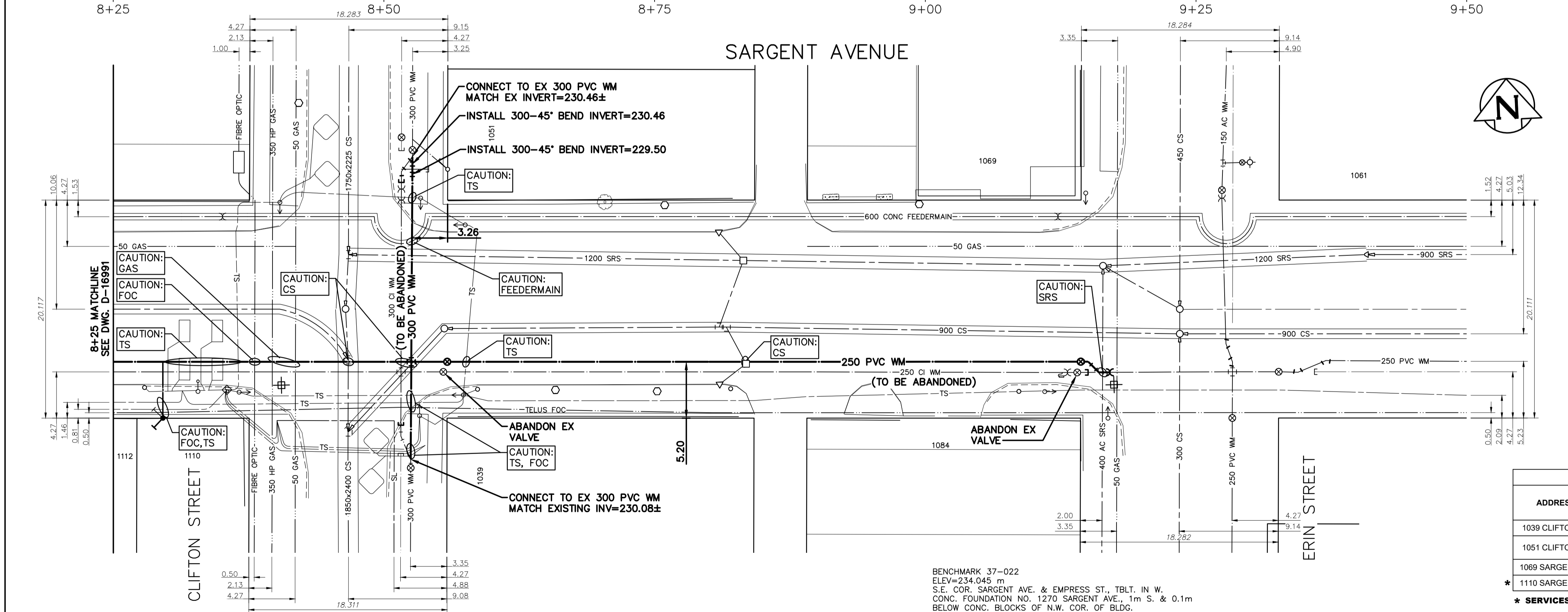
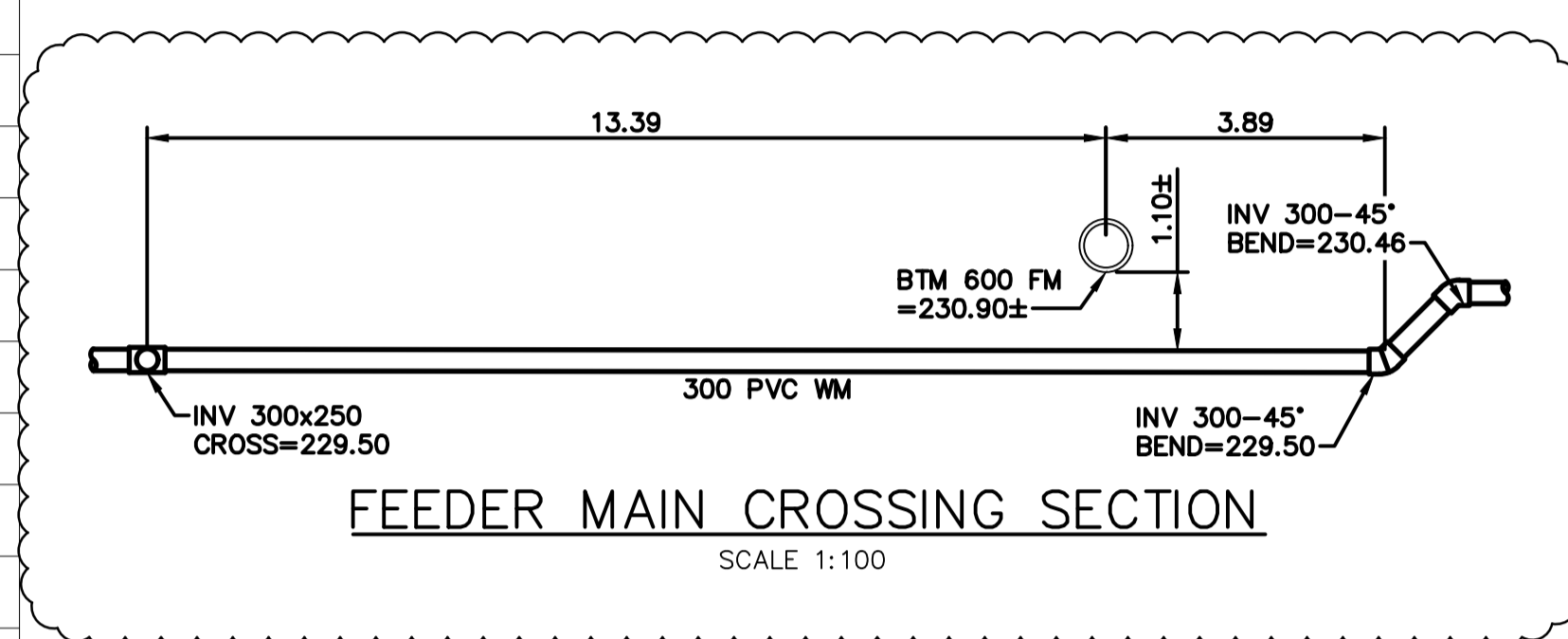


CAUTION: FEEDERMAIN  
 - CONTACTED THE DEPARTMENT'S CONSTRUCTION SERVICE COORDINATOR AT 204-986-4289 7 DAYS PRIOR TO THE COMMENCEMENT OF CONSTRUCTION TO ARRANGE FOR AN INSPECTION.  
 - PRIOR TO ANY CONSTRUCTION THE FEEDERMAIN WAS EXPOSED BY A SOFT DIG METHOD SO AS TO CONFIRM DEPTH AND LOCATION.  
 - A MINIMUM CLEARANCE OF 1.0 METER WAS PROVIDED BETWEEN THE UNDERSIDE OF THE FEEDERMAIN AND THE TOP OF THE PROPOSED WORKS. THIS INSTALLATION BY TRENCHLESS METHOD ONLY.



- A MINIMUM CLEARANCE OF 0.5 METERS WAS PROVIDED BETWEEN THE UNDERSIDE OF THE PROPOSED WORKS AND THE TOP OF THE EXISTING FEEDERMAIN. BY TRENCHLESS OR OPEN TRENCH.  
 - A SHAFT MUST BE EXCAVATED BY SOFT DIG METHODS 4.0 METERS FROM THE CENTRELINE OF FEEDERMAIN TO CONFIRM THE ALIGNMENT AND THE ELEVATION OF THE DRILLING ROD BEFORE IT CROSSED OVER OR UNDER THE FEEDERMAIN. THIS CONFIRMATION MUST BE WITNESSED BY A CITY REPRESENTATIVE.



WATER SERVICE INFORMATION					
ADDRESS	PIPE SIZE & MATERIAL (STREET)	PIPE SIZE & MATERIAL (PROPERTY)	STOP COCK LOCATION SHORT & LONG MEASUREMENT	CORP. LOCATION FROM STOP COCK	REMARKS
1039 CLIFTON ST	20 LEAD	20 CU	1' NSHL & 48' SSL SARGENT AV	2' S SC	OUTSIDE LIMITS
1051 CLIFTON ST	20 CU	20 CU	0.2m N SL HSE & 3.1m N NLL SARGENT AV	1.5m N SC	OUTSIDE LIMITS
1069 SARGENT AV	20 CU	25 CU	9' SNBL & 54' NLL SARGENT AV	10.5' S SC	OUTSIDE LIMITS
* 1110 SARGENT AV	20 LEAD	20 LEAD	4.5' EWHL & 26' WWL CLIFTON ST	OPP SC	RENEW SERVICE

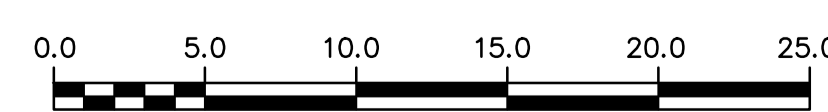
\* SERVICES TO BE RENEWED TO PL

BENCHMARK 37-022  
 ELEV=234.045 m  
 S.E. COR. SARGENT AVE. & EMPRESS ST., TBLT. IN W. CONC. FOUNDATION NO. 1270 SARGENT AVE., 1m S. & 0.1m BELOW CONC. BLOCKS OF N.W. COR. OF BLDG.

NOTE: CHAINAGES SHOWN ARE ALONG CENTERLINE OF ROW

NOTE: VALVES TO BE INSTALLED COUNTER-CLOCKWISE TO CLOSE

FOR INDEX SEE D-16984



METRIC  
 WHOLE NUMBERS INDICATE MILLIMETRES  
 DECIMALIZED NUMBERS INDICATE METRES

**ENGINEERS GEOSCIENTISTS MANITOBA**  
 Certificate of Authorization  
 Stantec Consulting Ltd.  
 No. 1301

LOCATION APPROVED UNDERGROUND STRUCTURES  
 SUPV. U/G STRUCTURES COMMITTEE DATE  
 NOTE:  
 LOCATION OF UNDERGROUND STRUCTURES AS SHOWN ARE BASED ON THE BEST INFORMATION AVAILABLE BUT NO GUARANTEE IS GIVEN THAT ALL EXISTING UTILITIES ARE SHOWN OR THAT THE GIVEN LOCATIONS ARE EXACT. CONFIRMATION OF EXISTENCE AND EXACT LOCATION OF ALL SERVICES MUST BE OBTAINED FROM THE INDIVIDUAL UTILITIES BEFORE PROCEEDING WITH CONSTRUCTION.

NO.	REVISIONS	DATE	BY
01	ISSUED FOR ADDENDUM 1	2024.04.29	R.S.
00	ISSUED FOR TENDER	2024.04.25	R.S.

**Stantec**

DESIGNED BY	R.S.	CHECKED BY	W.B.
DRAWN BY	W.A.	APPROVED BY	R.S.
SCALE:		RELEASED FOR CONSTRUCTION	R.L.
HORIZONTAL	1:250	DATE	2024.04.25
VERTICAL	1:50		
DATE	2024.04.25		

ENGINEER'S SEAL  
 CONSULTANT DRAWING NUMBER  
**C-208**

**THE CITY OF WINNIPEG**  
 WATER AND WASTE DEPARTMENT  
 ENGINEERING DIVISION

2024 WATER MAIN RENEWALS  
 CONTRACT 8

SARGENT AVENUE  
 12.6 W OF CLIFTON STREET TO  
 ERIN STREET

SHEET 10 OF 10  
 CITY DRAWING NUMBER  
**D-16992**