

NOTE:
ALL CAST IRON FITTINGS
TO BE POLY WRAPPED

BREAK OUT EXISTING 6" C.I. PIPE AND
REPLACE WITH PERMASTRAN PRESSURE
PIPE CLASS 150 CONNECT WITH
ROBAR O' CLAMP STYLE (SALVAGE
CLAMPS FROM EXISTING PIPE)
(REF DWG. ME-65-A-ME-24)

CONTRACT B.
RESERVOIR

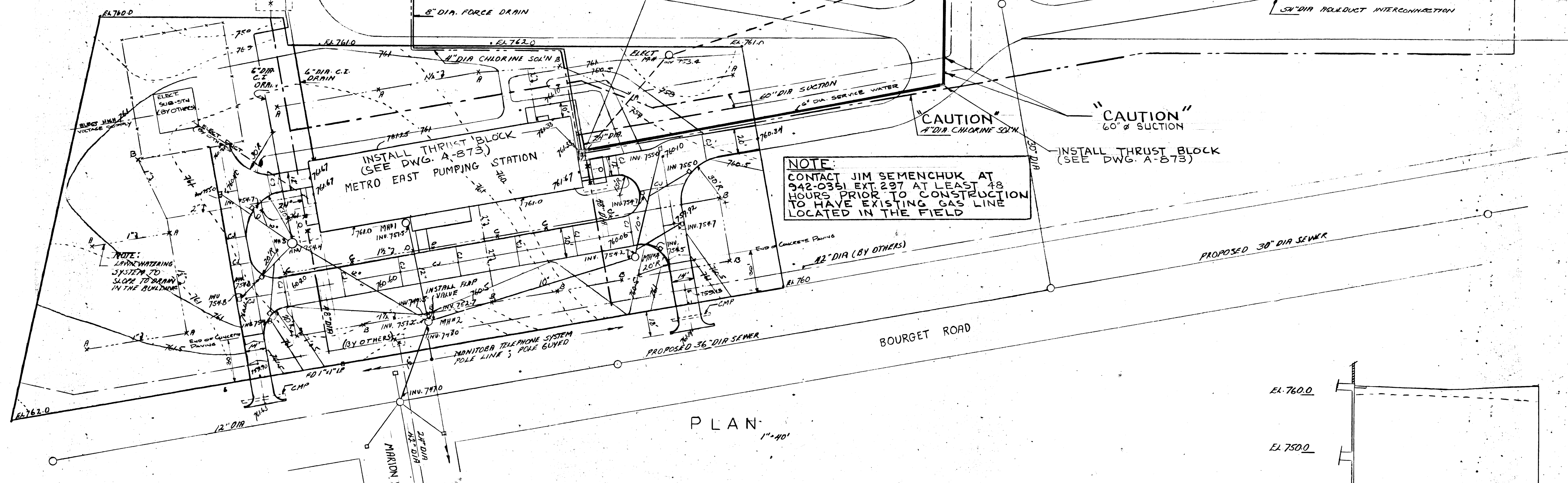
"CAUTION"
54" INTERCONNECTION

"CAUTION"
4" DIA. CHLORINE SOLN.

"CAUTION"
60" SUCTON

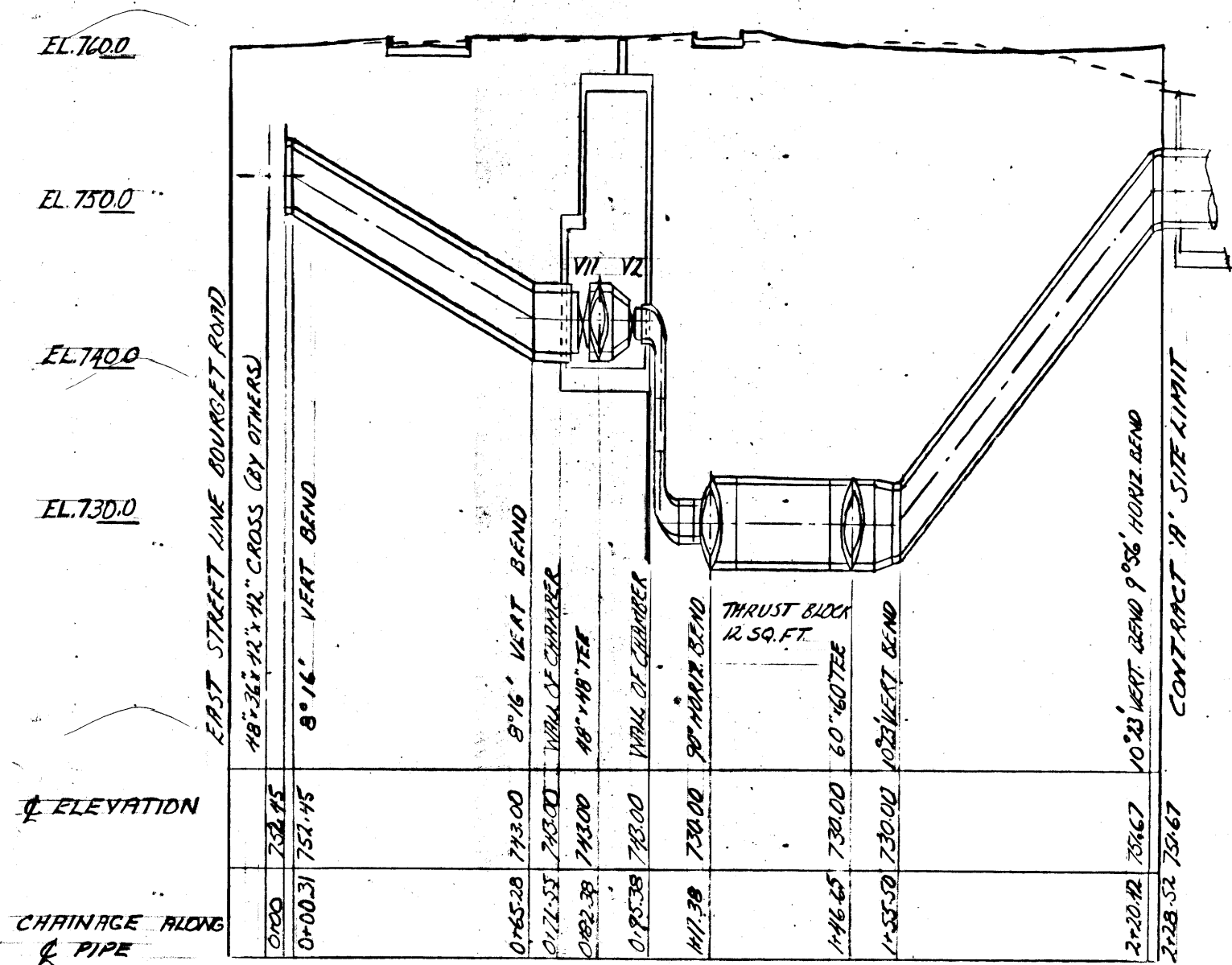
INSTALL THRUST BLOCK
(SEE DWG. A-D75)

NOTE:
CONTACT JIM SEMENCHUK AT
942-0351 EXT 237 AT LEAST 48
HOURS PRIOR TO CONSTRUCTION
TO HAVE EXISTING GAS LINE
LOCATED IN THE FIELD

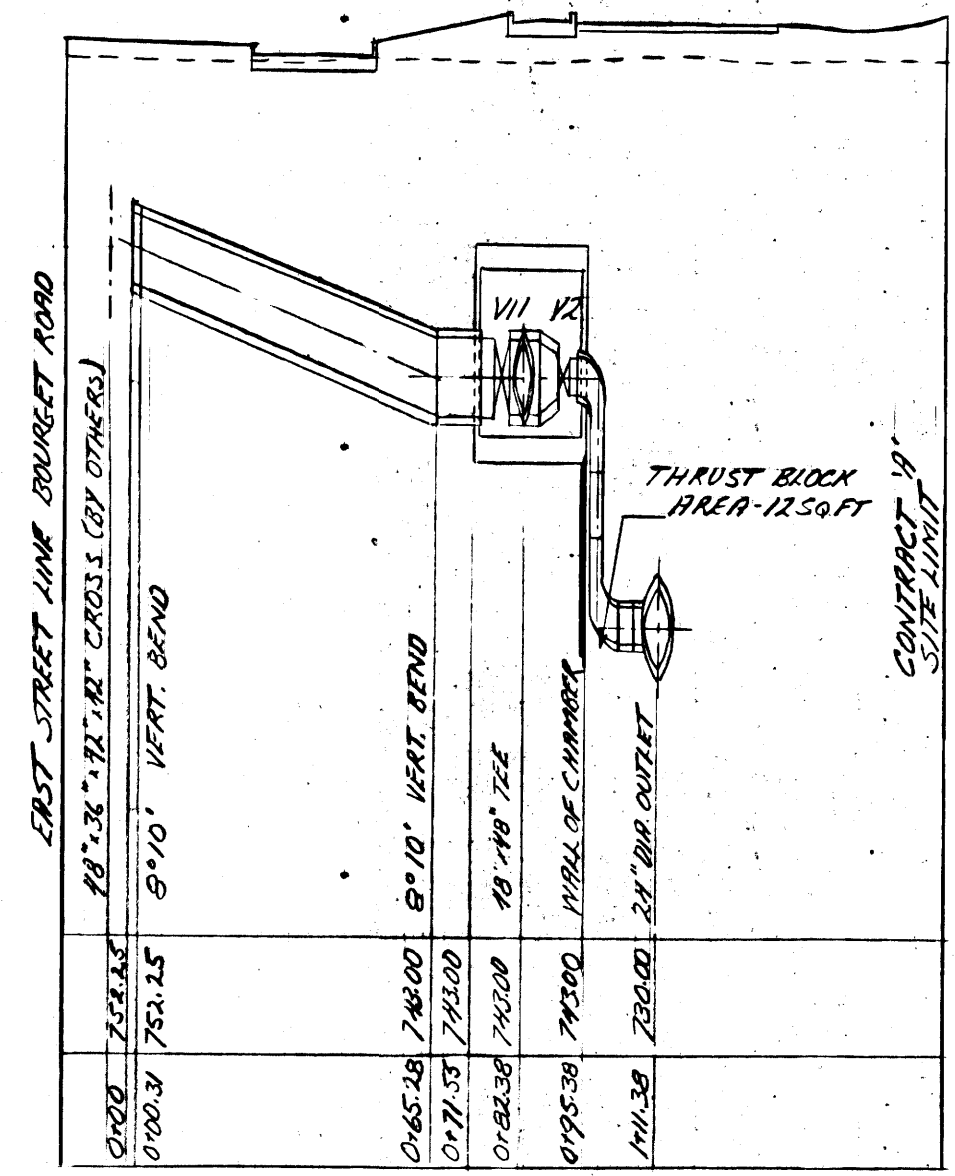


- LEGEND
- ORIGINAL GROUND CONTOURS
 - FINISHED GRADE CONTOURS
 - DRAIN OR SEWER
 - WATER MAIN
 - CHLORINE SOLUTION
 - ELECTRICAL DUCTS
 - LANA WATERING SUPPLY PIPES AND SPRINKLER HEAD
 - BORE HOLE
 - CONSTRUCTION JOINT

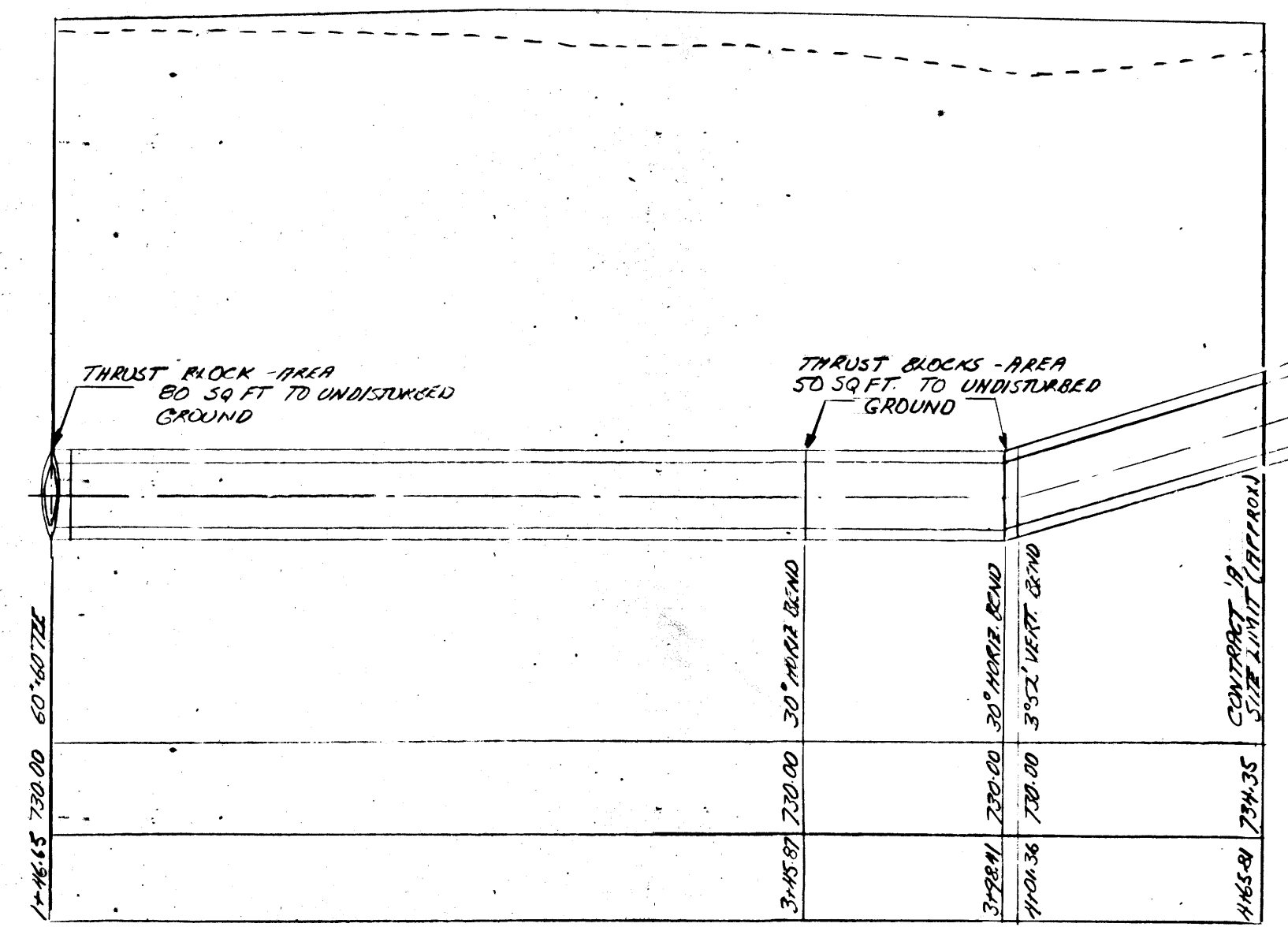
PLAN
1"=40'



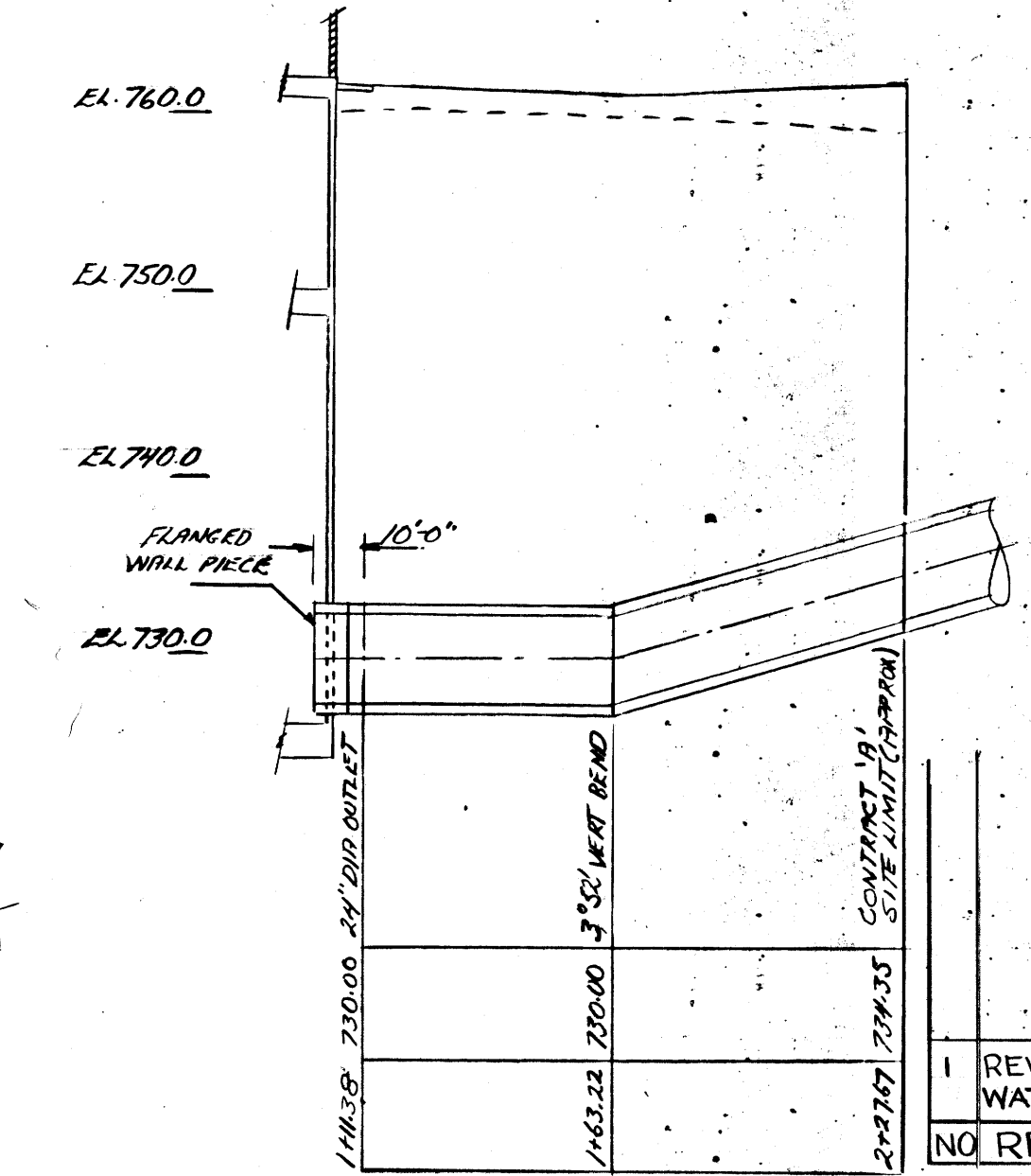
NORTH DISCHARGE - EMERGENCY SUCTON



SOUTH DISCHARGE



EAST SUCTON



WEST SUCTON

NOTE:
SEE MECHANICAL DUES FOR PIPING
DETAILS IN VALVE CHAMBERS
CHAMBER ALONG & TO P.I. OF BENDS

CONCRETE PRESSURE PIPE PROFILES

1"=40' HORIZONTAL
1"=10' VERTICAL

REVISED FOR 6" SERVICE WATER REPLACEMENT	RF: 1 SEPT/77
NO REVISION	BY DATE

REVISED AS BUILT, JUNE-1965

THE METROPOLITAN CORPORATION OF GREATER WINNIPEG
WATERWORKS AND WASTE DISPOSAL DIVISION

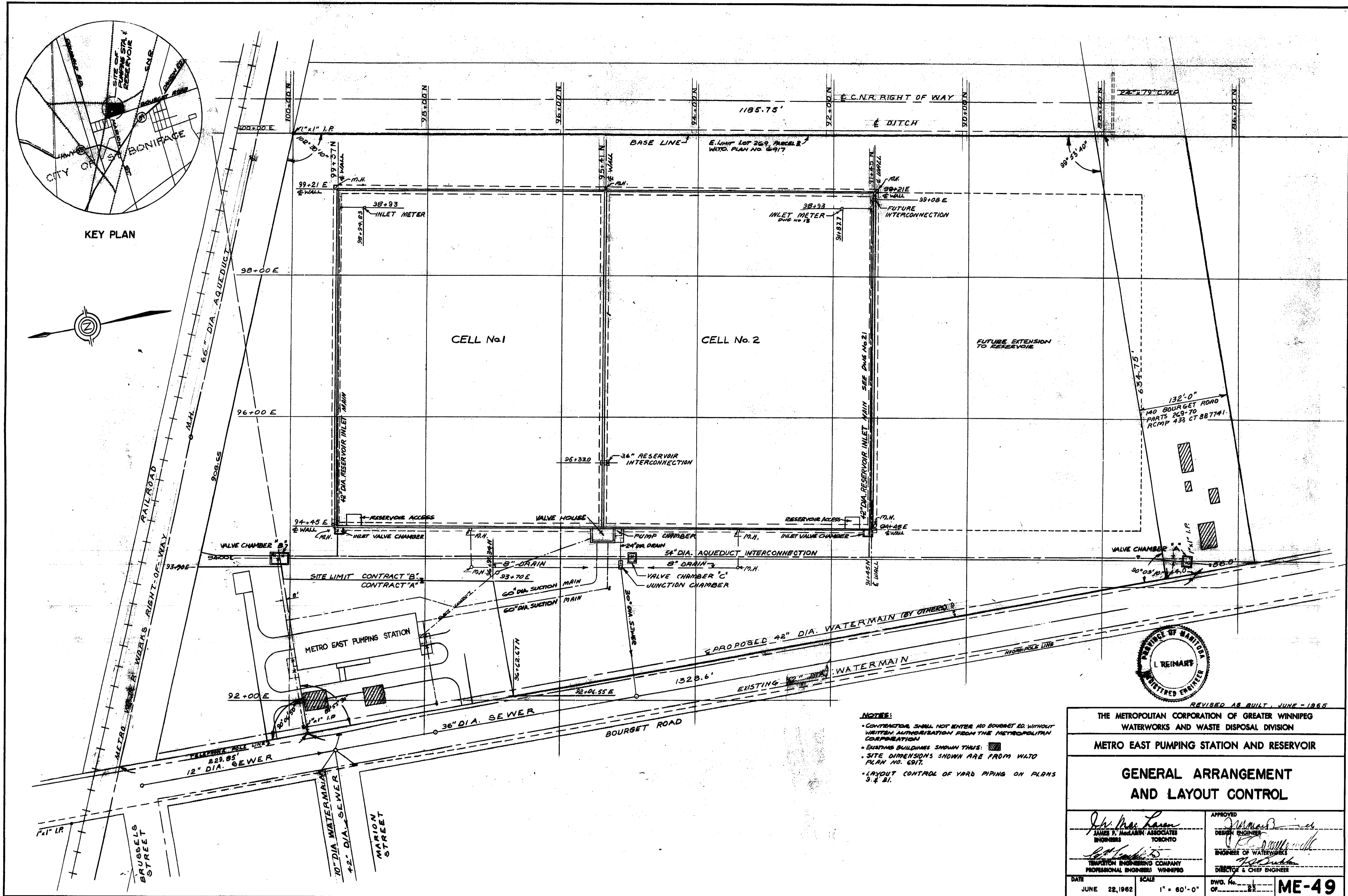
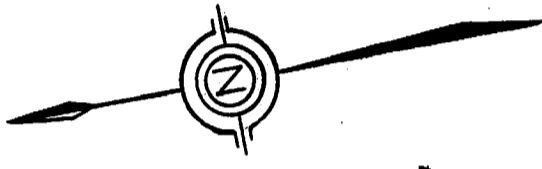
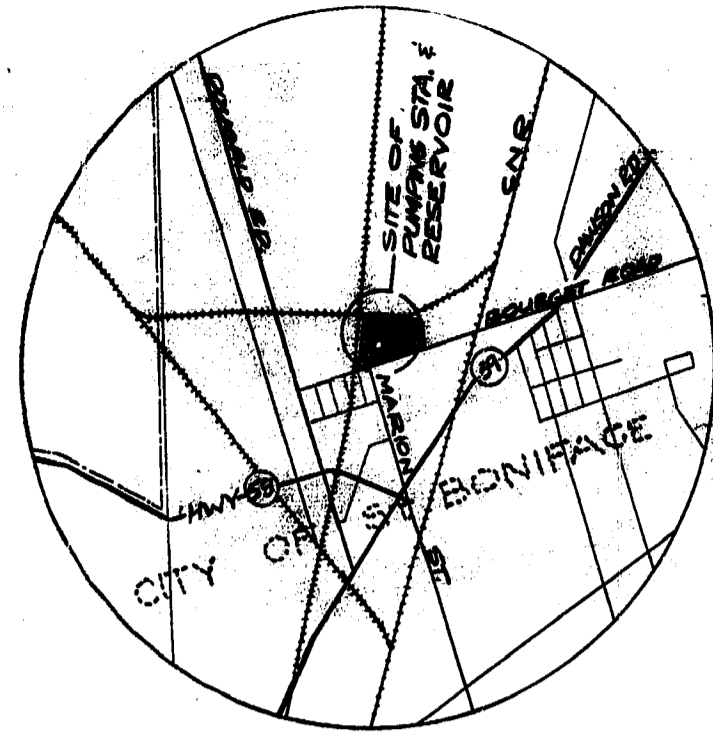
METRO EAST PUMPING STATION AND RESERVOIR

**CONTRACT A - PUMPING STATION
YARD PIPING
PLANS AND PROFILES**

APPROVED
JAMES F. MacLAREN ASSOCIATES
ENGINEERS TORONTO

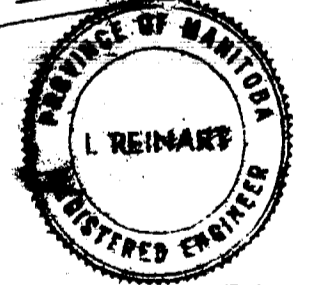
APPROVED
DESIGN ENGINEER
ENGINEER OF WATERWORKS
DIRECTOR & CHIEF ENGINEER

DATE: JUNE 22, 1962 SCALE: AS SHOWN DWG. No. ME-46 OF 4

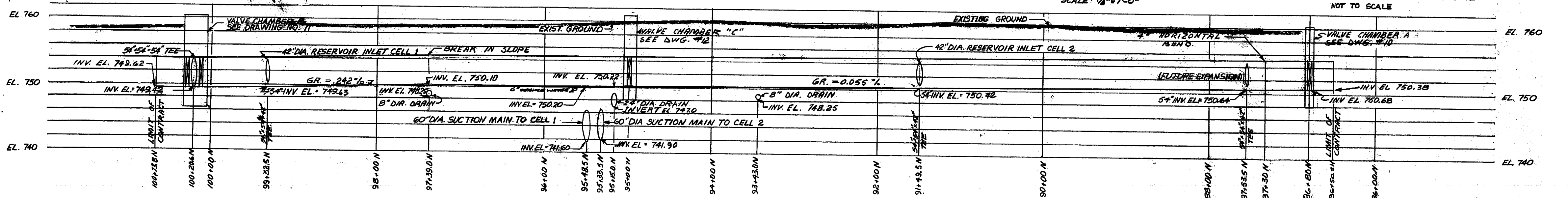
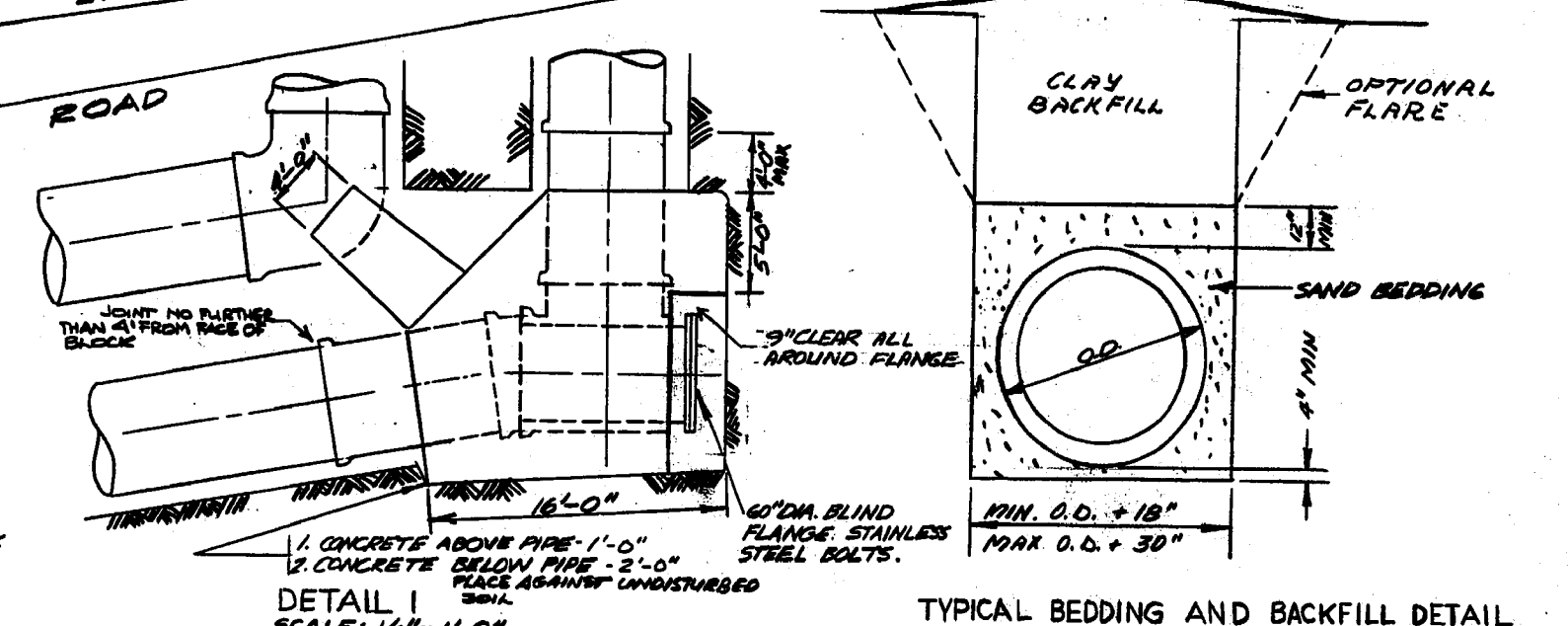
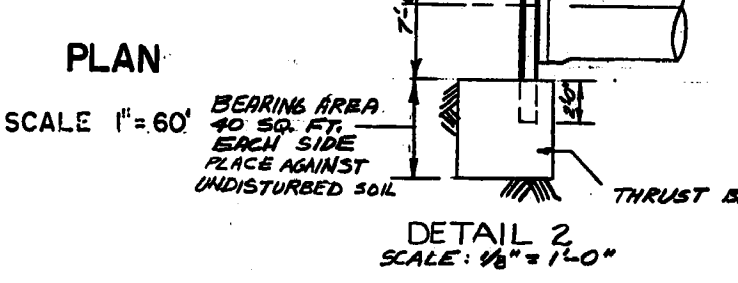
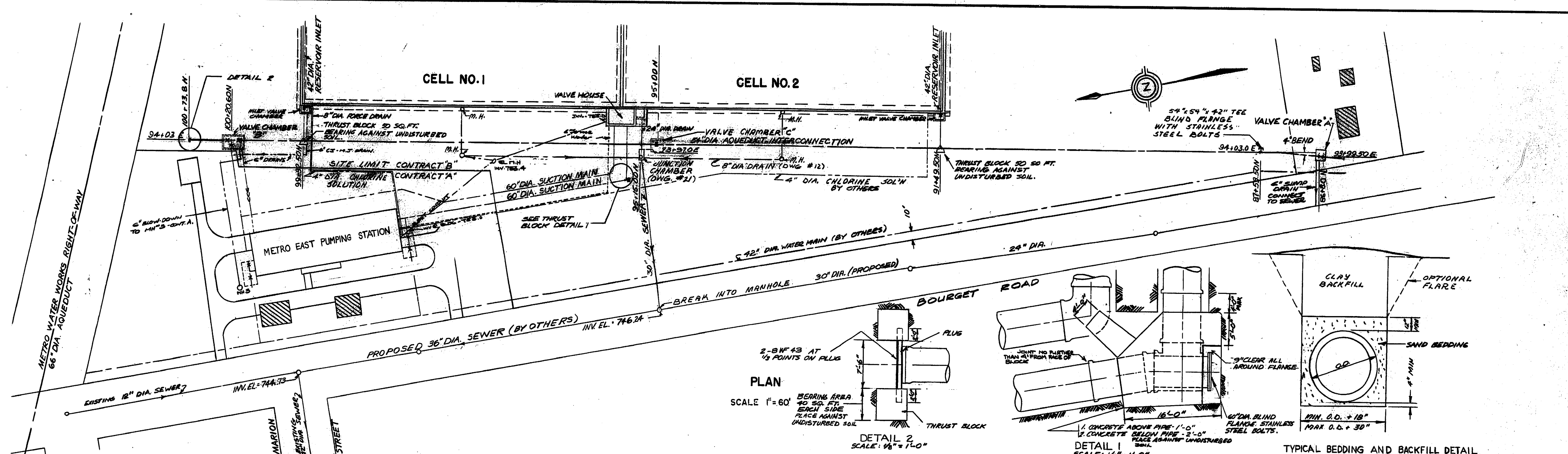


NOTES:

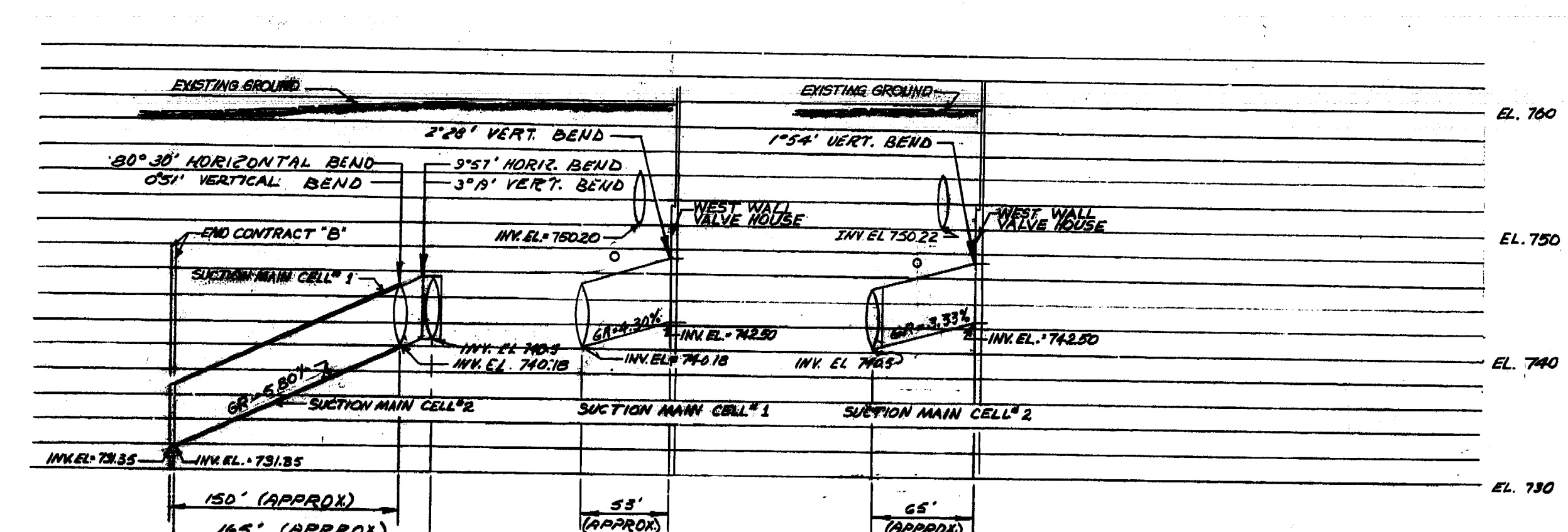
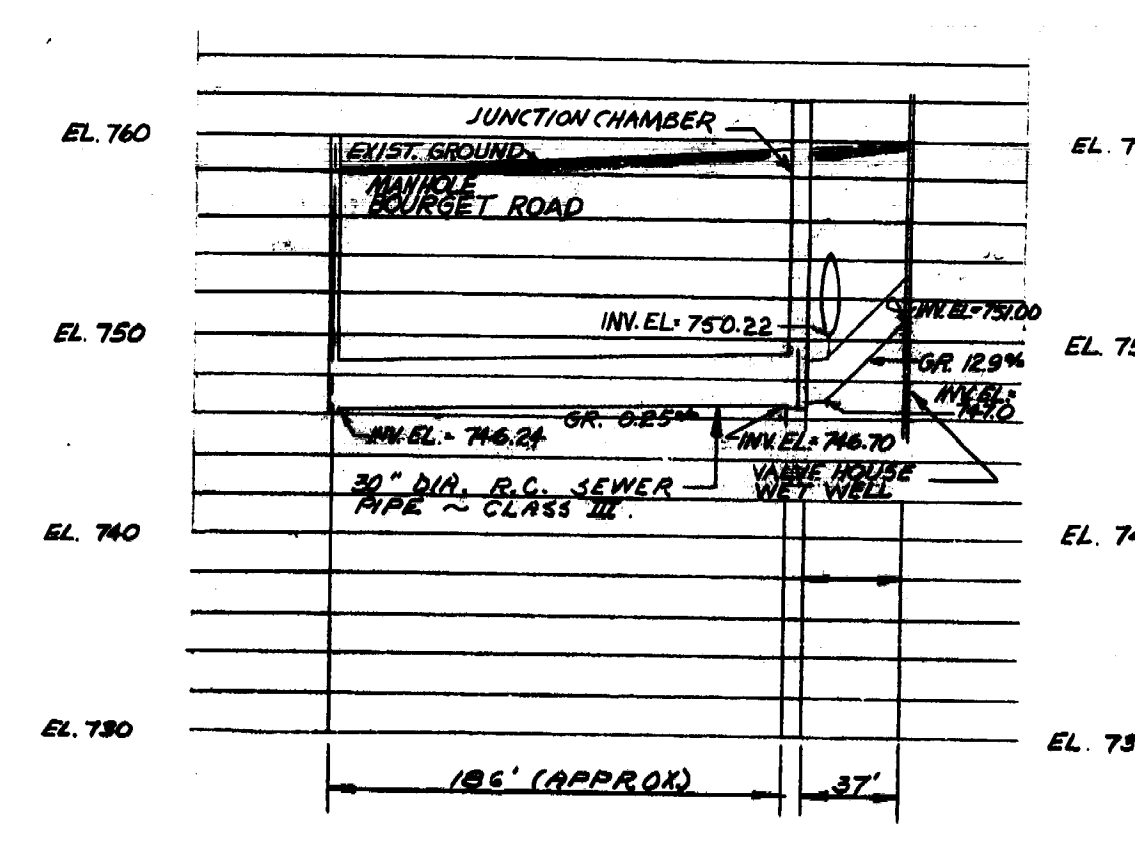
- CONTRACTOR SHALL NOT ENTER 140 BOURGET RD. WITHOUT WRITTEN AUTHORIZATION FROM THE METROPOLITAN CORPORATION
- EXISTING BUILDINGS SHOWN THIS: [Symbol]
- SITE DIMENSIONS SHOWN ARE FROM WATO PLAN NO. 6917.
- LAYOUT CONTROL OF YARD PIPING ON PLANS 3 & 4.



REVISED AS BUILT, JUNE - 1965		
THE METROPOLITAN CORPORATION OF GREATER WINNIPEG WATERWORKS AND WASTE DISPOSAL DIVISION		
METRO EAST PUMPING STATION AND RESERVOIR		
GENERAL ARRANGEMENT AND LAYOUT CONTROL		
APPROVED <i>J. M. Larson</i> JAMES F. MACLACHLAN ASSOCIATES ENGINEERS TORONTO	APPROVED <i>[Signature]</i> DESIGN ENGINEER ENGINEER OF WATERWORKS DIRECTOR & CHIEF ENGINEER	
DATE JUNE 22, 1962	SCALE 1" = 60'-0"	DWG. No. ME-49



NOTES:
1. SEE SPECIFICATIONS FOR LIST OF PIPE AND FITTINGS TO BE SUPPLIED BY THE METROPOLITAN CORPORATION.



REVISED AS BUILT, JUNE - 1965

THE METROPOLITAN CORPORATION OF GREATER WINNIPEG
WATERWORKS AND WASTE DISPOSAL DIVISION

METRO EAST PUMPING STATION AND RESERVOIR

YARD PIPING
PLAN AND PROFILES

APPROVED <i>J. P. MacLaren</i> JAMES P. MACLAREN ASSOCIATES ENGINEERS TORONTO	DESIGN ENGINEER <i>R. J. Somerville</i> ENGINEER OF WATERWORKS DIRECTOR & CHIEF ENGINEER
DATE JUNE 22, 1962	SCALE AS SHOWN
DWG. NO. OF	ME-57