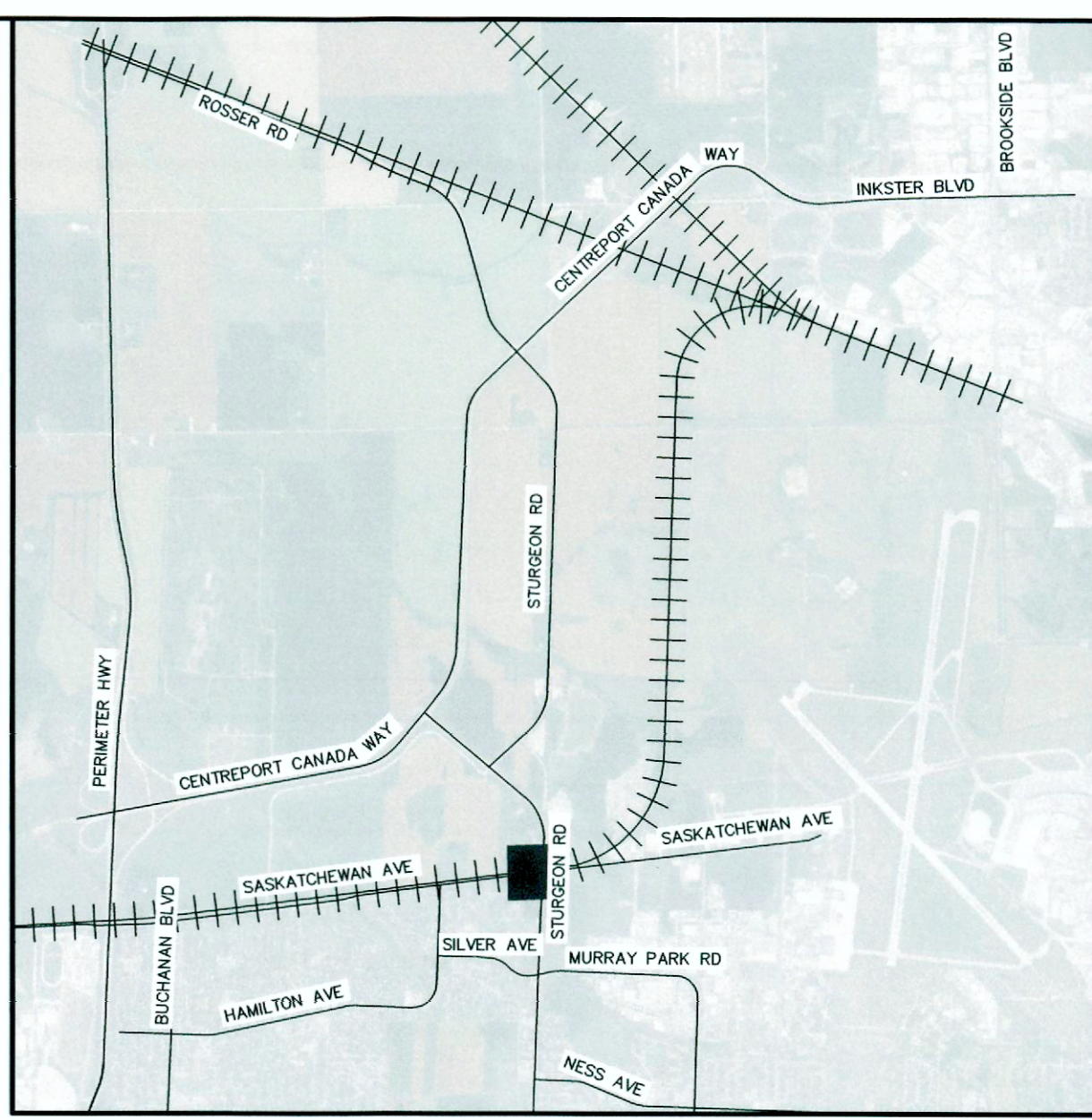
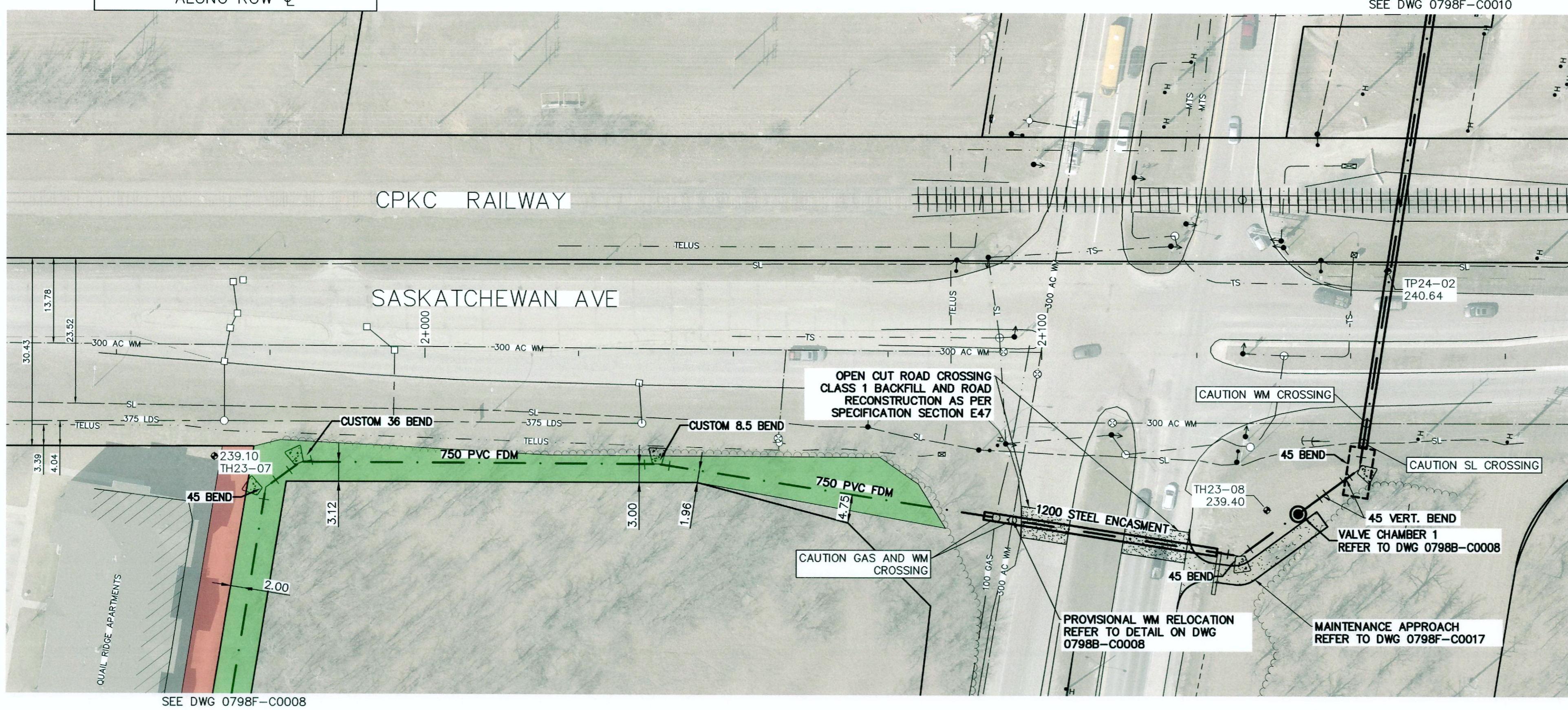


NOTE: CHAINAGES SHOWN ARE ALONG ROW C



- NOTES:**
- ALL UTILITIES SHOWN ON DRAWINGS ARE APPROXIMATE ONLY. LOCATIONS OF ALL UTILITIES TO BE CONFIRMED IN FIELD BY THE CONTRACTOR.
 - ALL UNDERGROUND AND SURFACE WORKS TO BE CONSTRUCTED IN ACCORDANCE WITH THE LATEST REVISION OF THE CITY OF WINNIPEG STANDARD CONSTRUCTION SPECIFICATIONS EXCEPT WHERE OTHERWISE NOTED IN THE PROJECT SPECIFICATIONS.
 - INSTALL FEEDER MAIN BY OPEN CUT METHODS, UNLESS OTHERWISE NOTED OR OTHERWISE APPROVED BY THE CONTRACT ADMINISTRATOR.
 - TEMPORARY SUPPORTING OF EXISTING UTILITIES TO FACILITATE EXCAVATION OR SHAFT CONSTRUCTION WILL BE CONSIDERED INCIDENTAL TO THE PIPE INSTALLATION, AS DESCRIBED IN THE SPECIFICATIONS.
 - INSTALL TRACER WIRE ON ALL FEEDER MAIN PIPING. INSTALL ACCESS PORTS AT ALL HORIZONTAL BENDS AS PER SPECIFICATION SECTION E28.
 - THE EXISTING GROUND ELEVATIONS SHOWN ON THE DRAWINGS ARE BASED ON LIDAR DATA OBTAINED NOV 2020.
 - THE ELEVATIONS OF BEDROCK AND TILL SHOWN ON THE DRAWING ARE APPROXIMATE ONLY AND SHOULD NOT BE INTERPRETED AS EXACT LINES OF CHANGE IN STRATIGRAPHY. SUBSURFACE CONDITIONS AT THE SITE MAY DIFFER FROM THE CONDITIONS SHOWN ON THE DRAWING. PLEASE REFER TO THE GEOTECHNICAL DATA REPORT (GDR) FOR LIMITATIONS OF THE GEOTECHNICAL INFORMATION OBTAINED FROM BOREHOLE DRILLING AND GEOPHYSICAL SEISMIC REFRACTION METHOD.
 - CONTRACTOR TO REFERENCE THE GEOTECHNICAL BASELINE REPORT (GBR) FOR A DESCRIPTION OF THE ANTICIPATED SUBSURFACE CONDITIONS ALONG THE FEEDER MAIN ALIGNMENT.
 - INSTALL ALL PIPING TO GRADES SHOWN. ENSURE MINIMUM 2.5m COVER OR PROVIDE INSULATION AS DIRECTED BY THE CONTRACT ADMINISTRATOR.
 - CONTRACTOR TO RESTORE SITE TO PRE-CONSTRUCTION CONDITION FOLLOWING COMPLETION OF CONSTRUCTION.

- LIMITS OF TREE CLEARING COMPLETED AS PART OF TENDER 109-2024
- LIMITS OF TEMPORARY CONSTRUCTION EASEMENT, COORDINATE ACCESS WITH CONTRACT ADMINISTRATOR

KGS GROUP IS NOT RESPONSIBLE FOR ANY CLAIMS, DAMAGES, OR LIABILITY ASSOCIATED WITH INTERPRETATION OF SUBSURFACE DATA OR FOR REUSE OF SUBSURFACE DATA.

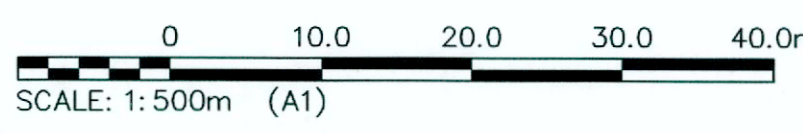
**ENGINEERS
GEOSCIENTISTS
MANITOBA**

Certificate of Authorization
KGS Group
No. 245

ISSUED FOR TENDER
NOT TO BE USED FOR CONSTRUCTION

FOR INDEX SEE
1-0798F-D0002-001

METRIC
WHOLE NUMBERS INDICATE MILLIMETRES
DECIMALIZED NUMBERS INDICATE METRES



**PROPERTY LIMITS
DELINEATION**

DELINEATION OF PROPERTY LIMITS AS SHOWN ON THIS DWG DOES NOT REPRESENT A "LEGAL SURVEY". KGS GROUP MAKES NO REPRESENTATION OR WARRANTY AS TO THE ACCURACY OF PROPERTY LIMITS DELINEATED ON THIS DWG, NOR ON THE DIMENSIONAL ACCURACY OF DWG FEATURES RELATIVE TO THOSE PROPERTY LIMITS.

WARNING

IF POWER EQUIPMENT OR EXPLOSIVES ARE TO BE USED FOR EXCAVATION ON THIS PROJECT THE CONTRACTOR MUST:

- NOTIFY THE GAS COMPANY OF THE PROPOSED LOCATION OF EXCAVATION.
- TAKE PRECAUTION TO AVOID DAMAGE TO GAS COMPANY INSTALLATIONS.

SEE PROVINCIAL REGULATION 210/72 FOR DETAILS

**LOCATION APPROVED
UNDERGROUND STRUCTURES**

SUPV. U/G STRUCTURES COMMITTEE DATE

NOTE:
LOCATION OF UNDERGROUND STRUCTURES AS SHOWN ARE BASED ON THE BEST INFORMATION AVAILABLE BUT NO GUARANTEE IS GIVEN THAT ALL EXISTING UTILITIES ARE SHOWN OR THAT THE GIVEN LOCATIONS ARE EXACT. CONFIRMATION OF EXISTENCE AND EXACT LOCATION OF ALL SERVICES MUST BE OBTAINED FROM THE INDIVIDUAL UTILITIES BEFORE PROCEEDING WITH CONSTRUCTION.

VERTICAL DATUM: CGVD28 (HT2.0 Geoid)
HORIZONTAL DATUM: NAD83 (June 1990), Zone 14

NO.	REVISIONS	DATE (YY/MM/DD)	BY
1	ISSUED WITH ADDENDUM 2	24/05/13	GTH
0	ISSUED FOR TENDER	24/04/26	GTH

KGS GROUP

DESIGNED BY	GTH	CHECKED BY	R80
DRAWN BY	GTH	APPROVED BY	R80
SCALE:	HORIZONTAL: 1:500 VERTICAL: 1:50		
DATE	2024 05 13	DATE	YYYY/MM/DD

PLOT DATE: 2024 05 13

ENGINEER'S SEAL

PROVINCE OF MANITOBA
G.T. HEINRICHS
Member
38162
24/05/13
REGISTERED PROFESSIONAL ENGINEER

CONSULTANT DRAWING NUMBER
C-4A-105

THE CITY OF WINNIPEG
Winnipeg
WATER AND WASTE DEPARTMENT
ENGINEERING DIVISION

CENTREPORT SOUTH REGIONAL WATER AND WASTEWATER SERVING - PHASE 1A CONTRACT 4A - FEEDER MAIN
SASKATCHEWAN AVENUE
STA 1+950 TO STA 2+190

SHEET 8 OF 34
CITY DRAWING NUMBER
1-0798F-C0009-001