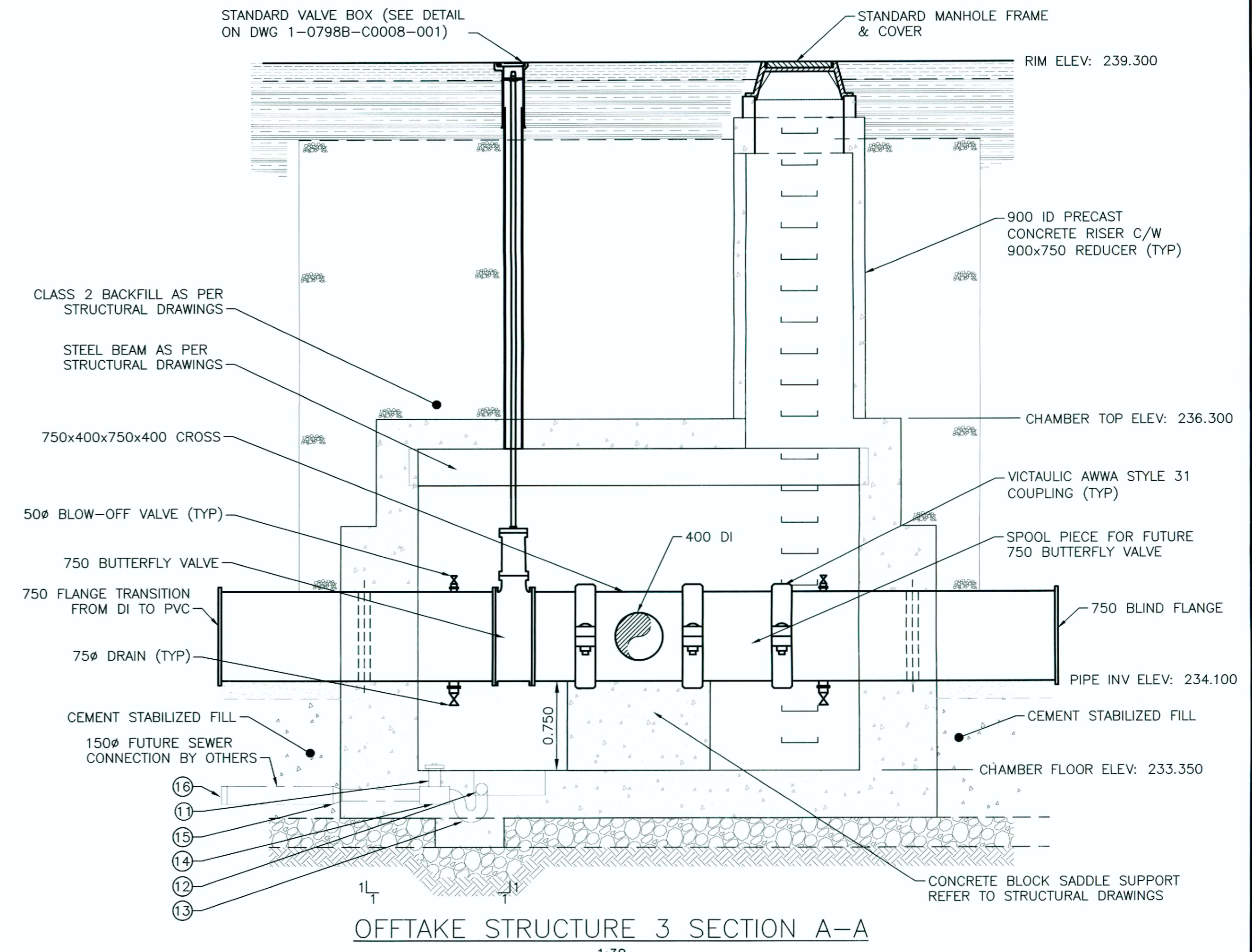
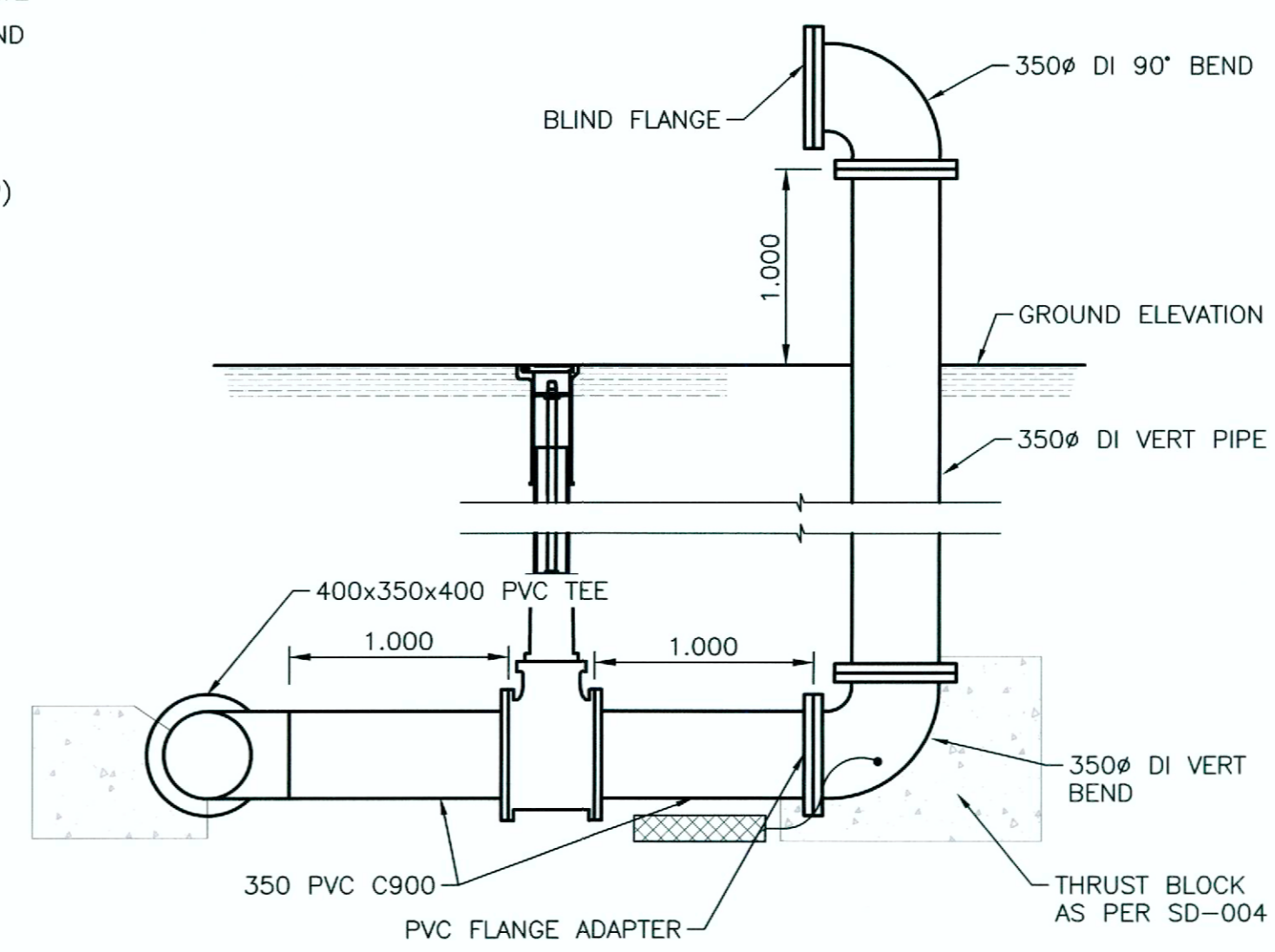


OFFTAKE STRUCTURE 3 LAYOUT DETAIL
1:30



OFFTAKE STRUCTURE 3 SECTION A-A
1:30

DRAIN PIPING DETAIL	
ITEM	DESCRIPTION
11	100# PVC DWV THREADED CAP
12	100# PVC DWV STREET TEE
13	100# PVC DWV P-TRAP
14	100# PVC BACKWATER VALVE
15	100x150# PVC REDUCER
16	150# PVC PLUG



STANDPIPE DETAIL
1:30

- NOTES:
- DIMENSIONS AND LAYOUT IS APPROXIMATE ONLY. ALL DIMENSIONS AND LAYOUT MUST BE CONFIRMED BY THE CONTRACTOR BEFORE COMMENCING WORK.
 - SHOP DRAWINGS FOR CONCRETE STRUCTURES SHALL BE COORDINATED WITH ALL MECHANICAL SHOP DRAWINGS TO ENSURE PROPER FIT AND LOCATION.
 - ALL CHAMBER PIPING TO BE CEMENT MORTAR LINED DUCTILE IRON IN ACCORDANCE WITH AWWA C151 AND AWWA C104.
 - ALL VALVES TO BE AWWA C210 EPOXY COATED.
 - REFER TO STRUCTURAL DRAWINGS FOR CHAMBER OPENINGS, CONCRETE STRUCTURES AND STEEL DESIGN.
 - SEE DRAWING 1-0798B-C0008-001 FOR BLOW OFF ASSEMBLY AND DRAIN ASSEMBLY DETAIL.

ISSUED FOR TENDER
NOT TO BE USED FOR CONSTRUCTION

FOR INDEX SEE
1-0798F-D002-001

METRIC
WHOLE NUMBERS INDICATE MILLIMETRES
DECIMALIZED NUMBERS INDICATE METRES



WARNING
IF POWER EQUIPMENT OR EXPLOSIVES ARE TO BE USED FOR EXCAVATION ON THIS PROJECT THE CONTRACTOR MUST:
1) NOTIFY THE GAS COMPANY OF THE PROPOSED LOCATION OF EXCAVATION.
2) TAKE PRECAUTION TO AVOID DAMAGE TO GAS COMPANY INSTALLATIONS.
SEE PROVINCIAL REGULATION 210/72 FOR DETAILS

LOCATION APPROVED
UNDERGROUND STRUCTURES
SUPV. U/G STRUCTURES COMMITTEE DATE
NOTE:
LOCATION OF UNDERGROUND STRUCTURES AS SHOWN ARE BASED ON THE BEST INFORMATION AVAILABLE BUT NO GUARANTEE IS GIVEN THAT ALL EXISTING UTILITIES ARE SHOWN OR THAT THE GIVEN LOCATIONS ARE EXACT. CONFIRMATION OF EXISTENCE AND EXACT LOCATION OF ALL SERVICES MUST BE OBTAINED FROM THE INDIVIDUAL UTILITIES BEFORE PROCEEDING WITH CONSTRUCTION.

VERTICAL DATUM: CGVD28 (HT2.0 Geoid)	
HORIZONTAL DATUM: NAD83 (June 1990), Zone 14	
NO.	REVISIONS
2	ISSUED WITH ADDENDUM 4
1	ISSUED WITH ADDENDUM 2
0	ISSUED FOR TENDER
DATE (YYYY/MM/DD)	BY
24/05/16	GTH
24/05/13	GTH
24/04/26	GTH

KGS GROUP
DESIGNED BY: GTH
CHECKED BY: RBo
DRAWN BY: GTH
APPROVED BY: RBo
SCALE: HORIZONTAL AS NOTED
VERTICAL
DATE: 2024 05 16
PLOT DATE: 2024 05 16

ENGINEER'S SEAL
PROVINCE OF MANITOBA
REGISTERED PROFESSIONAL ENGINEER
G.T. HEINRICHS
Member 38162
CONSULTANT DRAWING NUMBER: C-4A-122

THE CITY OF WINNIPEG
WATER AND WASTE DEPARTMENT
ENGINEERING DIVISION
CENTREPORT SOUTH REGIONAL WATER AND WASTEWATER
SERVICING - PHASE 1A CONTRACT 4A - FEEDER MAIN
OFFTAKE STRUCTURE 3 DETAILS
SHEET 25 OF 34
GITY DRAWING NUMBER
1-0798F-C0019-001