

SOUTH BOUND

BASELINE CURVE DATA TABLE

CURVE I.D.	LENGTH	RADIUS	DELTA
C102	132.800	383.00	019°52'00"
C103	258.228	431.21	034°18'42"

NORTH BOUND

BASELINE CURVE DATA TABLE

CURVE I.D.	LENGTH	RADIUS	DELTA
C202	379.520	421.75	051°33'31"
C203	128.401	419.06	017°33'20"

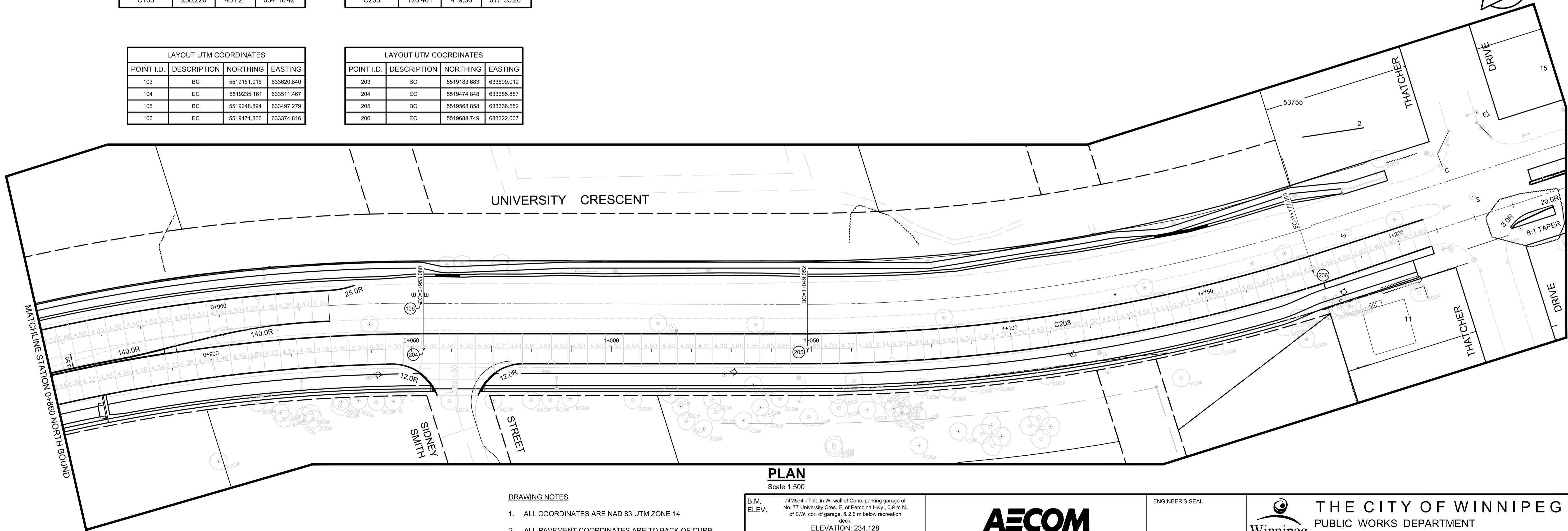
LAYOUT UTM COORDINATES

POINT I.D.	DESCRIPTION	NORTHING	EASTING
103	BC	5519161.016	633620.840
104	EC	5519235.161	633511.467
105	BC	5519248.894	633497.279
106	EC	5519471.863	633374.816

LAYOUT UTM COORDINATES

POINT I.D.	DESCRIPTION	NORTHING	EASTING
203	BC	5519183.663	633609.012
204	EC	5519474.848	633385.857
205	BC	5519568.858	633366.552
206	EC	5519686.749	633322.007

PLAN
Scale 1:500



PLAN
Scale 1:500

DRAWING NOTES

- ALL COORDINATES ARE NAD 83 UTM ZONE 14
- ALL PAVEMENT COORDINATES ARE TO BACK OF CURB

PRELIMINARY
NOT FOR CONSTRUCTION

ENGINEERS
GEOSCIENTISTS
MANITOBA
Certificate of Authorization
AECOM Canada Ltd.
No. 4671 Date: 06/28/2024

METRIC
WHOLE NUMBERS INDICATE MILLIMETRES
DECIMALIZED NUMBERS INDICATE METRES

B.M. ELEV.	74M574 - Tbt. in W. wall of Conc. parking garage of No. 77 University Cres. E. of Pembina Hwy., 0.9 m N. of S.W. cor. of garage, & 2.6 m below recreation deck.		
	ELEVATION: 234.128		
1	ADDENDUM #1	06/28/2024	RC
0	ISSUED FOR TENDER	06/19/2024	RC
NO.	REVISIONS	DATE	BY
		06/19/2024	

AECOM

DESIGNED BY	JT	CHECKED BY	BC
DRAWN BY	JT	APPROVED BY	RC
HOR. SCALE:	AS SHOWN		
VERTICAL:	RELEASED FOR CONSTRUCTION BY:		
NO.	DATE	DATE	DATE
	06/19/2024		

ENGINEER'S SEAL

THE CITY OF WINNIPEG
PUBLIC WORKS DEPARTMENT
ENGINEERING DIVISION

2024 REGIONAL STREET RENEWAL PROGRAM
UNIVERSITY CRESCENT

CITY DRAWING NUMBER
P-3579-04
SHEET 04 OF 21

GEOMETRIC PLAN
SIFTON ROAD TO THATCHER DRIVE
NORTHBOUND AND SOUTHBOUND UNIVERSITY CRESCENT

CONSULTANT DRAWING NO.
CT-04