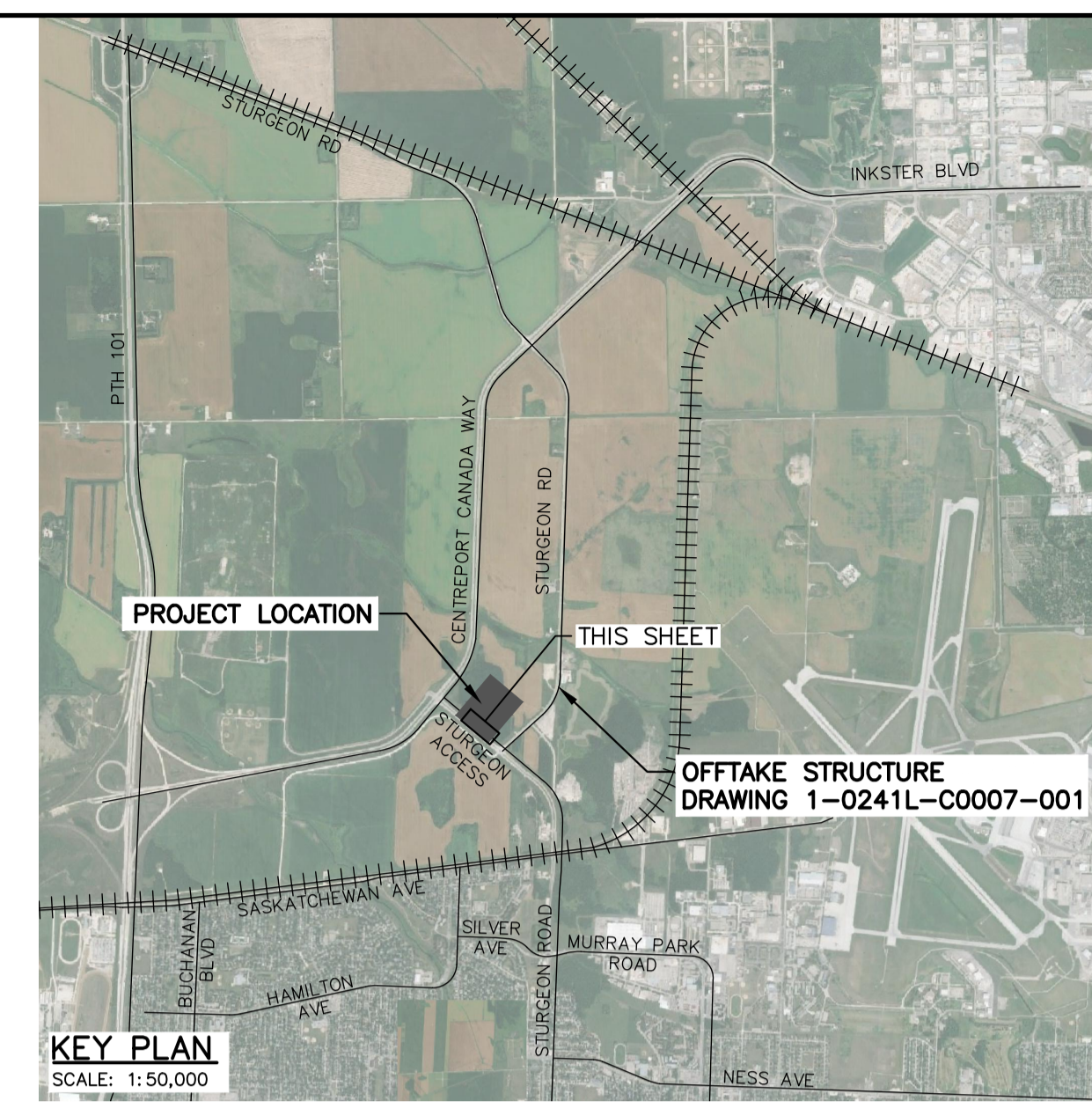


NOTE: CHAINAGES SHOWN ARE ALONG CL OF R.O.W.

FORCEMAIN PROFILE

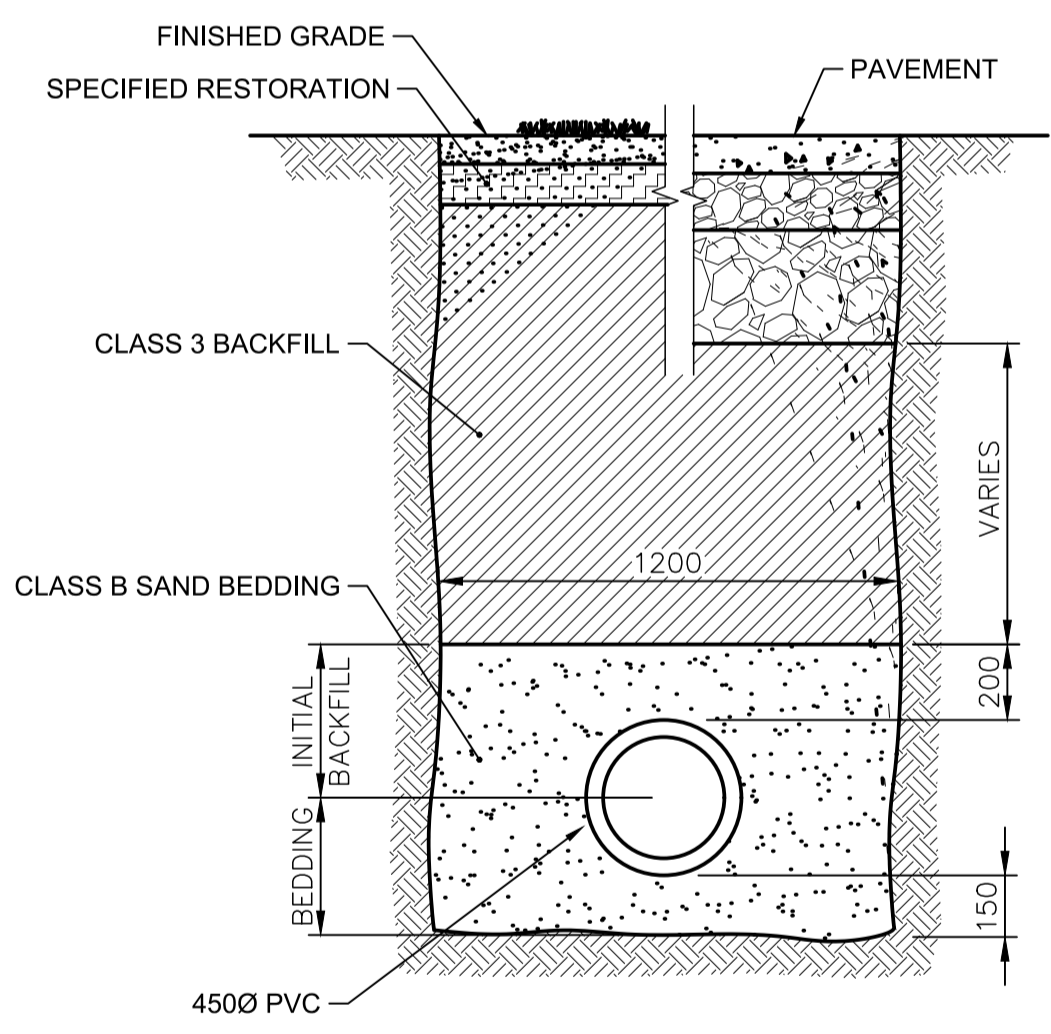
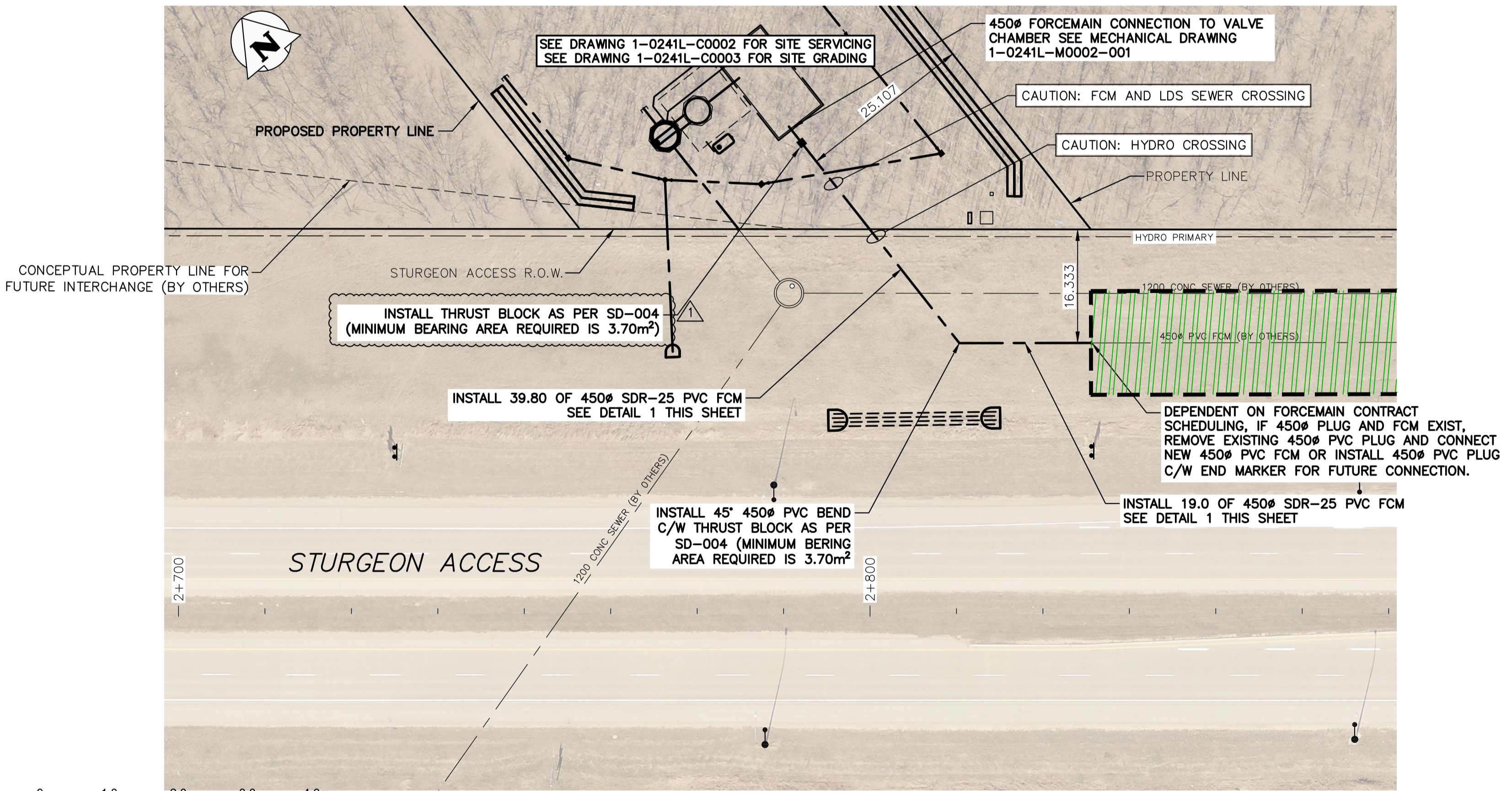
SCALE: H 1:500 V 1:50

KGS GROUP IS NOT RESPONSIBLE FOR ANY CLAIMS, DAMAGES, OR LIABILITY ASSOCIATED WITH INTERPRETATION OF SUBSURFACE DATA OR FOR REUSE OF SUBSURFACE DATA.

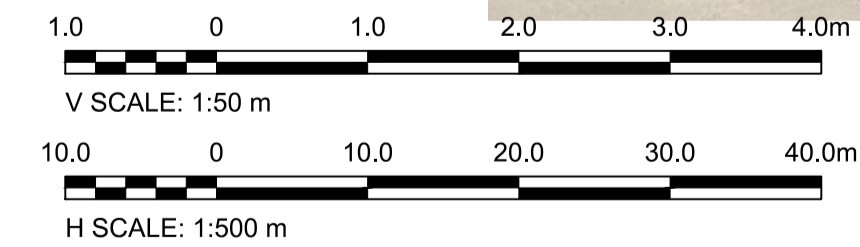


NOTES:

1. ALL UTILITIES SHOWN ON DRAWINGS ARE APPROXIMATE ONLY. LOCATIONS OF ALL UTILITIES TO BE CONFIRMED IN FIELD BY THE CONTRACTOR.
2. THE ELEVATIONS OF THE BEDROCK AND OVERBURDEN SHOWN IN THE DRAWINGS ARE APPROXIMATE ONLY AND SHOULD NOT BE INTERPRETED AS EXACT LINES OF CHANGES IN STRATIGRAPHY. SUBSURFACE CONDITIONS AT THE SITE MAY DIFFER FROM THE CONDITIONS SHOWN ON THE DRAWINGS. PLEASE REFER TO THE GEOTECHNICAL DATA REPORT (GDR)
3. CONTRACTOR TO RESTORE SITE TO PRE-CONSTRUCTION CONDITION FOLLOWING COMPLETION OF CONSTRUCTION.
4. CONTRACTOR IS RESPONSIBLE FOR THE CONTROL, DIVERSION, STORAGE, AND PUMPING OF ALL WATER INCLUDING WITHOUT LIMITATION RAIN, SNOWMELT, GROUNDWATER, AND/OR LEAKING INFRASTRUCTURE THROUGHOUT ALL STAGES OF THE WORK. REFERENCE D19 IN THE CONTRACT DOCUMENTS.
5. CONTRACTOR IS RESPONSIBLE TO DEVELOP SUITABLE SITE ACCESS AS REQUIRED TO FACILITATE THE WORK, INCLUDING BUT NOT LIMITED TO CONSTRUCTION OF TEMPORARY RAMPING/ACCESS ROADS, EXCAVATION AND REGRADING TO DEVELOP FLAT WORKING SURFACES AROUND SHAFTS AND WITHIN LAYDOWN AREAS AS REQUIRED, AND INSTALLATION OF TEMPORARY FENCING AND SIGNAGE.
6. COORDINATION WITH MANITOBA HYDRO IS REQUIRED FOR BOTH THE 450 PVC FM AND 450 PVC LDS. THE CONTRACTOR IS RESPONSIBLE FOR MAINTAINING REQUIRED CLEAR DISTANCES BETWEEN PIPING AND HYDRO INFRASTRUCTURE. ANY FITTINGS REQUIRED TO OBTAIN CLEARANCES ARE CONSIDERED INCIDENTAL TO THE APPLICABLE PIPING.



1 TYPICAL FORCEMAIN TRENCH
NTS



FORCEMAIN PLAN

SCALE: 1:500

FOR TENDER ONLY
NOT TO BE USED FOR CONSTRUCTION

ENGINEERS GEOSCIENTISTS MANITOBA
Certificate of Authorization
KGS Group
No. 245

FOR INDEX SEE
1-0241L-D0002-001

PROPERTY LIMITS DELINEATION
DELINEATION OF PROPERTY LIMITS AS SHOWN ON THIS DWG DOES NOT REPRESENT A "LEGAL SURVEY". KGS GROUP AND ASSOCIATED ENGINEERING MAKES NO REPRESENTATION OR WARRANTY AS TO THE ACCURACY OF PROPERTY LIMITS DELINEATED ON THIS DWG, NOR ON THE DIMENSIONAL ACCURACY OF DWG FEATURES RELATIVE TO THOSE PROPERTY LIMITS.

WARNING
IF POWER EQUIPMENT OR EXPLOSIVES ARE TO BE USED FOR EXCAVATION ON THIS PROJECT THE CONTRACTOR MUST:
1) NOTIFY THE GAS COMPANY OF THE PROPOSED LOCATION OF EXCAVATION.
2) TAKE PRECAUTION TO AVOID DAMAGE TO GAS COMPANY INSTALLATIONS.
SEE PROVINCIAL REGULATION 210/72 FOR DETAILS

LOCATION APPROVED UNDERGROUND STRUCTURES
SUPV. U/G STRUCTURES COMMITTEE DATE
NOTE:
LOCATION OF UNDERGROUND STRUCTURES AS SHOWN ARE BASED ON THE BEST INFORMATION AVAILABLE BUT NO GUARANTEE IS GIVEN THAT ALL EXISTING UTILITIES ARE SHOWN OR THAT THE GIVEN LOCATIONS ARE EXACT. CONFIRMATION OF EXISTENCE AND EXACT LOCATION OF ALL SERVICES MUST BE OBTAINED FROM THE INDIVIDUAL UTILITIES BEFORE PROCEEDING WITH CONSTRUCTION.

VERTICAL DATUM: CGVD28 (HT2.0 Geoid)
HORIZONTAL DATUM: UTM ZONE 14 NAD83/CSRS 2010 EPOCH
CONSTRUCTION COMPLETION DATE: YYYY MM DD

NO.	REVISIONS	DATE	BY
1	ISSUED WITH ADDENDUM 4	2024 07 26	HM
0	ISSUED FOR TENDER	2024 06 20	HM

KGS GROUP

DESIGNED BY	GLG	CHECKED BY	HM
DRAWN BY	GLG	APPROVED BY	RBO
SCALE:	AS NOTED		
DATE	2024 06 20	RELEASED FOR CONSTRUCTION	DATE

ENGINEER'S SEAL
CONSULTANT DRAWING NUMBER
23-0107-009_C04

THE CITY OF WINNIPEG
WATER AND WASTE DEPARTMENT
ENGINEERING DIVISION

CONSTRUCTION OF A NEW WASTEWATER LIFT STATION - CENTREPORT SOUTH REGIONAL WATER AND WASTEWATER SERVICING PHASE 1A (CONTRACT 1A)
STURGEON ACCESS

CIVIL
FORCEMAIN PLAN AND PROFILE

CITY DRAWING NUMBER: 1-0241L-C0004-001
SHEET 8 OF 120

METRIC
WHOLE NUMBERS INDICATE MILLIMETRES
DECIMALIZED NUMBERS INDICATE METRES