

# SPORT COURTS TYPICAL PAVEMENT SECTION

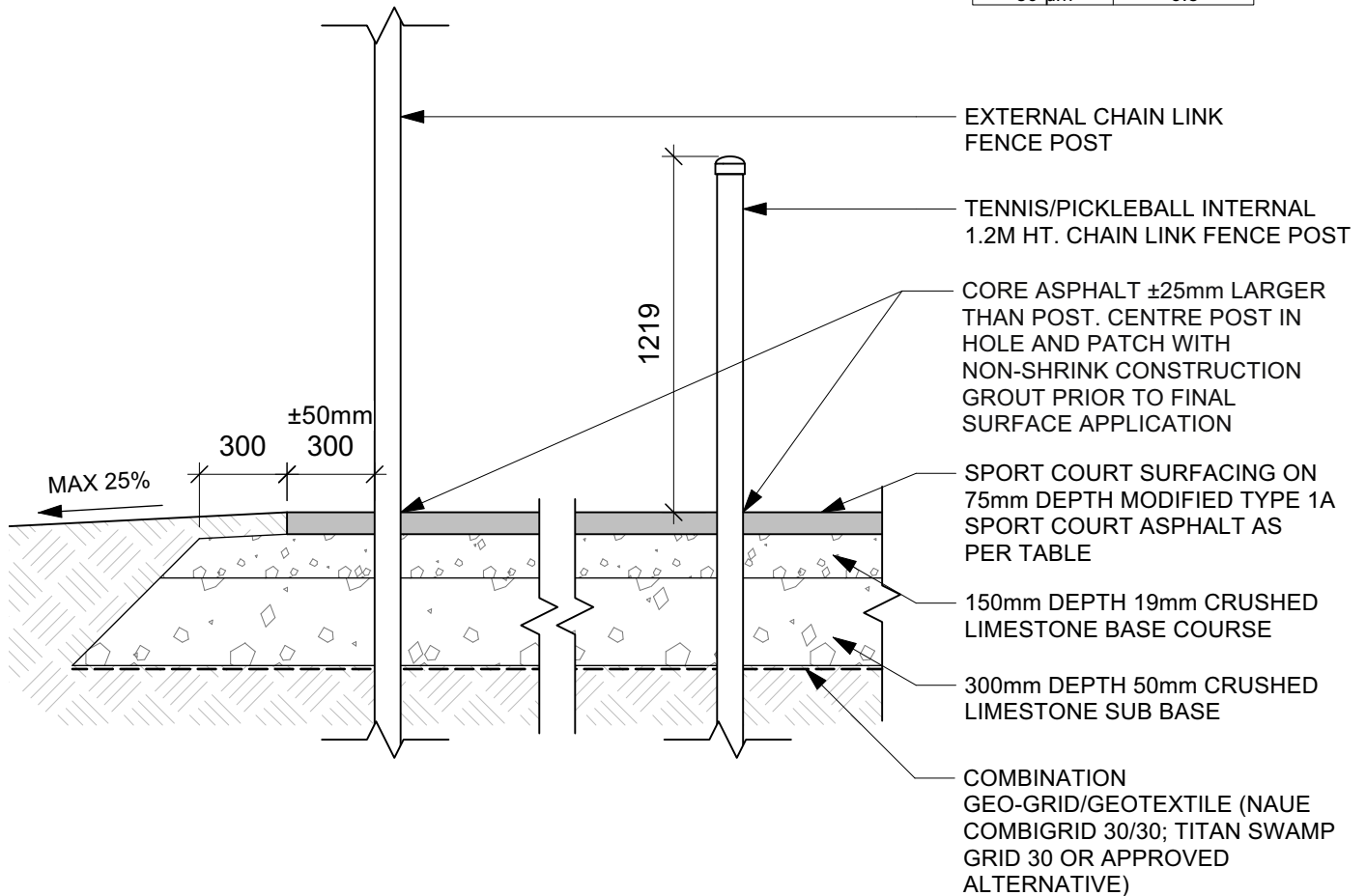
**SCD-305**

**NOTES**

1. CHAIN LINK FENCING AS PER CW3550
2. SUB-GRADE, SUB BASE & BASE COURSE CONSTRUCTION AS PER CW3110

**MODIFIED TYPE 1A SPORT COURT  
ASPHALT MIX GRADATION**

SIEVE SIZE	% PASSING
16.0 mm	99.3
14.0 mm	97.7
12.5 mm	94.2
10.0 mm	89.2
5.0 mm	73.7
2.5 mm	63.1
1.25 mm	52.8
630 µm	38.6
425 µm	27.1
315 µm	18.8
160 µm	9.0
80 µm	6.8



DIMENSIONS SHOWN ARE IN MILLIMETRES UNLESS OTHERWISE SPECIFIED

Revision: 1  
 DATE: July 2023  
 SCALE: 1:25  
 DRAWN BY: MG

The City of Winnipeg  
 Planning, Property and Development Department  
 Planning and Land Use Division  
 Unit 15 - 30 Fort Street, Winnipeg, MB, R3C 4X5

