

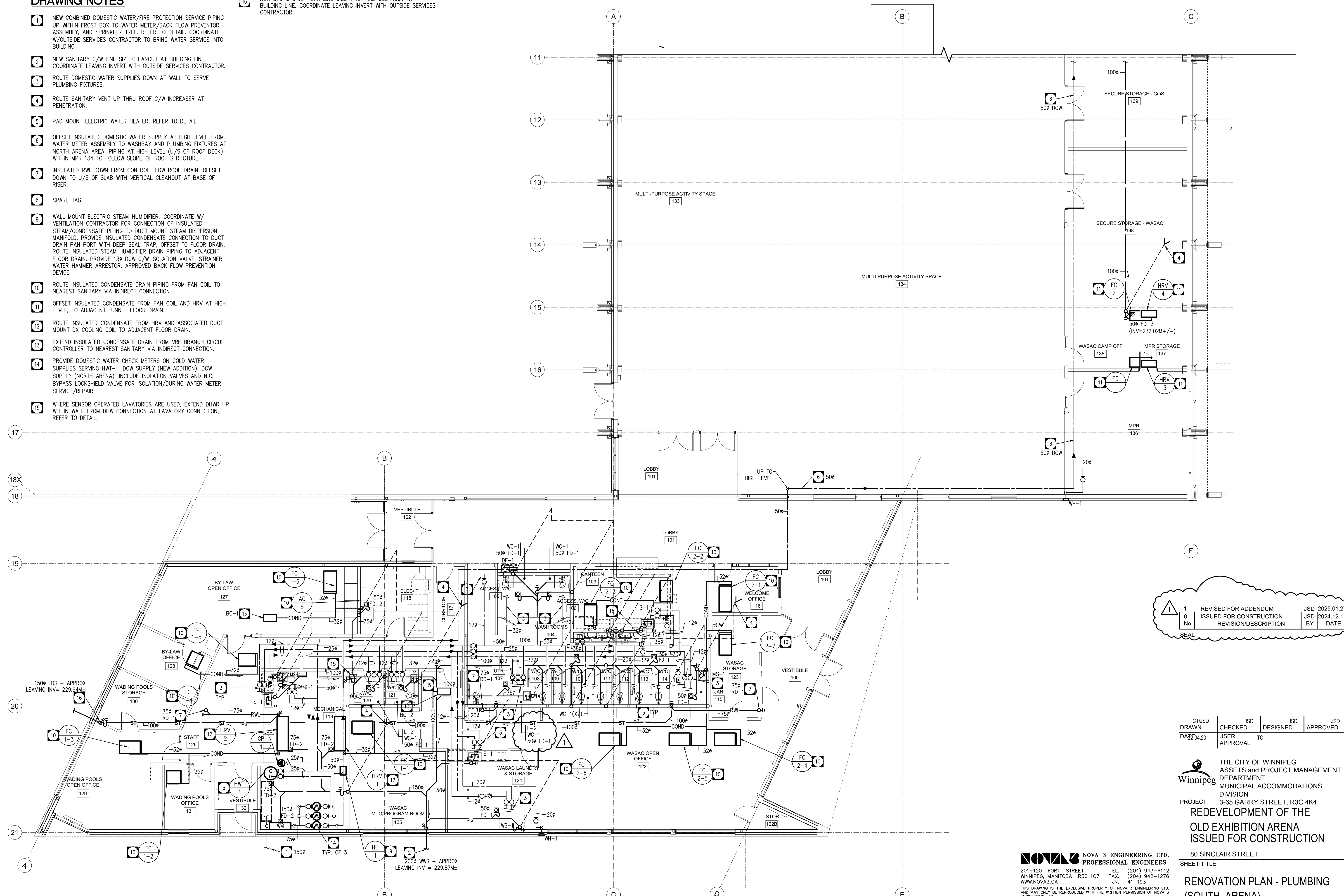
NOTES:

**DRAWING NOTES**

- 1 NEW COMBINED DOMESTIC WATER/FIRE PROTECTION SERVICE PIPING UP WITHIN FROST BOX TO WATER METER/BACK FLOW PREVENTOR ASSEMBLY, AND SPRINKLER TREE. REFER TO DETAIL. COORDINATE W/OUTSIDE SERVICES CONTRACTOR TO BRING WATER SERVICE INTO BUILDING.
- 2 NEW SANITARY C/W LINE SIZE CLEANOUT AT BUILDING LINE. COORDINATE LEAVING INVERT WITH OUTSIDE SERVICES CONTRACTOR.
- 3 ROUTE DOMESTIC WATER SUPPLIES DOWN AT WALL TO SERVE PLUMBING FIXTURES.
- 4 ROUTE SANITARY VENT UP THRU ROOF C/W INCREASER AT PENETRATION.
- 5 PAD MOUNT ELECTRIC WATER HEATER, REFER TO DETAIL.
- 6 OFFSET INSULATED DOMESTIC WATER SUPPLY AT HIGH LEVEL FROM WATER METER ASSEMBLY TO WASHBAY AND PLUMBING FIXTURES AT NORTH ARENA AREA. PIPING AT HIGH LEVEL (U/S OF ROOF DECK) WITHIN MPR 134 TO FOLLOW SLOPE OF ROOF STRUCTURE.
- 7 INSULATED RWL DOWN FROM CONTROL FLOW ROOF DRAIN, OFFSET DOWN TO U/S OF SLAB WITH VERTICAL CLEANOUT AT BASE OF RISER.
- 8 SPARE TAG
- 9 WALL MOUNT ELECTRIC STEAM HUMIDIFIER; COORDINATE W/ VENTILATION CONTRACTOR FOR CONNECTION OF INSULATED STEAM/CONDENSATE PIPING TO DUCT MOUNT STEAM DISPERSION MANIFOLD. PROVIDE INSULATED CONDENSATE CONNECTION TO DUCT DRAIN PAN PORT WITH DEEP SEAL TRAP, OFFSET TO FLOOR DRAIN. ROUTE INSULATED STEAM HUMIDIFIER DRAIN PIPING TO ADJACENT FLOOR DRAIN. PROVIDE 13# DCW C/W ISOLATION VALVE, STRAINER, WATER HAMMER ARRESTOR, APPROVED BACK FLOW PREVENTION DEVICE.
- 10 ROUTE INSULATED CONDENSATE DRAIN PIPING FROM FAN COIL TO NEAREST SANITARY VIA INDIRECT CONNECTION.
- 11 OFFSET INSULATED CONDENSATE FROM FAN COIL AND HRV AT HIGH LEVEL, TO ADJACENT FUNNEL FLOOR DRAIN.
- 12 ROUTE INSULATED CONDENSATE FROM HRV AND ASSOCIATED DUCT MOUNT DX COOLING COIL TO ADJACENT FLOOR DRAIN.
- 13 EXTEND INSULATED CONDENSATE DRAIN FROM VRF BRANCH CIRCUIT CONTROLLER TO NEAREST SANITARY VIA INDIRECT CONNECTION.
- 14 PROVIDE DOMESTIC WATER CHECK METERS ON COLD WATER SUPPLIES SERVING HWT-1, DCW SUPPLY (NEW ADDITION), DCW SUPPLY (NORTH ARENA). INCLUDE ISOLATION VALVES AND N.C. BYPASS LOCKSHIELD VALVE FOR ISOLATION/DURING WATER METER SERVICE/REPAIR.
- 15 WHERE SENSOR OPERATED LAVATORIES ARE USED, EXTEND DHWR UP WITHIN WALL FROM DHW CONNECTION AT LAVATORY CONNECTION, REFER TO DETAIL.

16 NEW STORM DRAIN C/W LINE SIZE TRAP AND CLEANOUT AT BUILDING LINE. COORDINATE LEAVING INVERT WITH OUTSIDE SERVICES CONTRACTOR.

FILE NAME: DATE: PROJECT NO: SHEET TITLE: ADDRESS:



1 1 REVISED FOR ADDENDUM JSD 2025.01.27  
 0 ISSUED FOR CONSTRUCTION JSD 2024.12.11  
 No. REVISION/DESCRIPTION BY DATE  
 SEAL

CT/USD	JSD	JSD	JSD
DRAWN	CHECKED	DESIGNED	APPROVED
DATE: 04/20	USER APPROVAL	TC	

THE CITY OF WINNIPEG  
 ASSETS and PROJECT MANAGEMENT  
 DEPARTMENT  
 MUNICIPAL ACCOMMODATIONS  
 DIVISION  
 PROJECT 3-65 GARRY STREET, R3C 4K4  
**REDEVELOPMENT OF THE  
 OLD EXHIBITION ARENA  
 ISSUED FOR CONSTRUCTION**

80 SINCLAIR STREET  
 SHEET TITLE  
**RENOVATION PLAN - PLUMBING  
 (SOUTH ARENA)**

**NOVA 3 ENGINEERING LTD.**  
 PROFESSIONAL ENGINEERS  
 201-120 FORT STREET TEL: (204) 943-6142  
 WINNIPEG, MANITOBA R3C 1C7 FAX: (204) 942-1276  
 WWW.NOVA3.CA JLN: 41-193  
 THIS DRAWING IS THE EXCLUSIVE PROPERTY OF NOVA 3 ENGINEERING LTD. AND MAY ONLY BE REPRODUCED WITH THE WRITTEN PERMISSION OF NOVA 3 ENGINEERING LTD.

THE CONCEPT AND DESIGN INCORPORATED INTO THIS DRAWING ARE BASED ON INFORMATION PROVIDED BY THE CLIENT AND OTHER RELATED SOURCES. PROFESSIONAL ENGINEER ACCEPTS NO RESPONSIBILITY FOR DRAWING AND DESIGN UNLESS DRAWING IS ACCOMPANIED BY ORIGINAL SEALED LETTER OF INTENT OR EQUIVALENT ACCEPTABLE FACSIMILE. PROFESSIONAL ENGINEER ACCEPTS NO RESPONSIBILITY FOR FINAL INSTALLATION CONFORMANCE WITHOUT ORIGINAL SEALED CERTIFICATE OF INSPECTION OR EQUIVALENT ACCEPTABLE FACSIMILE.

SCALE	PROJECT No:	SHEET No:
AS SHOWN	2020-136	M2.1R1

DRAWING SHEET SIZE: A1 (841mm x 594mm) PLOT 1:1

**RENOVATION PLAN - PLUMBING (SOUTH)**  
 SCALE: 1:100