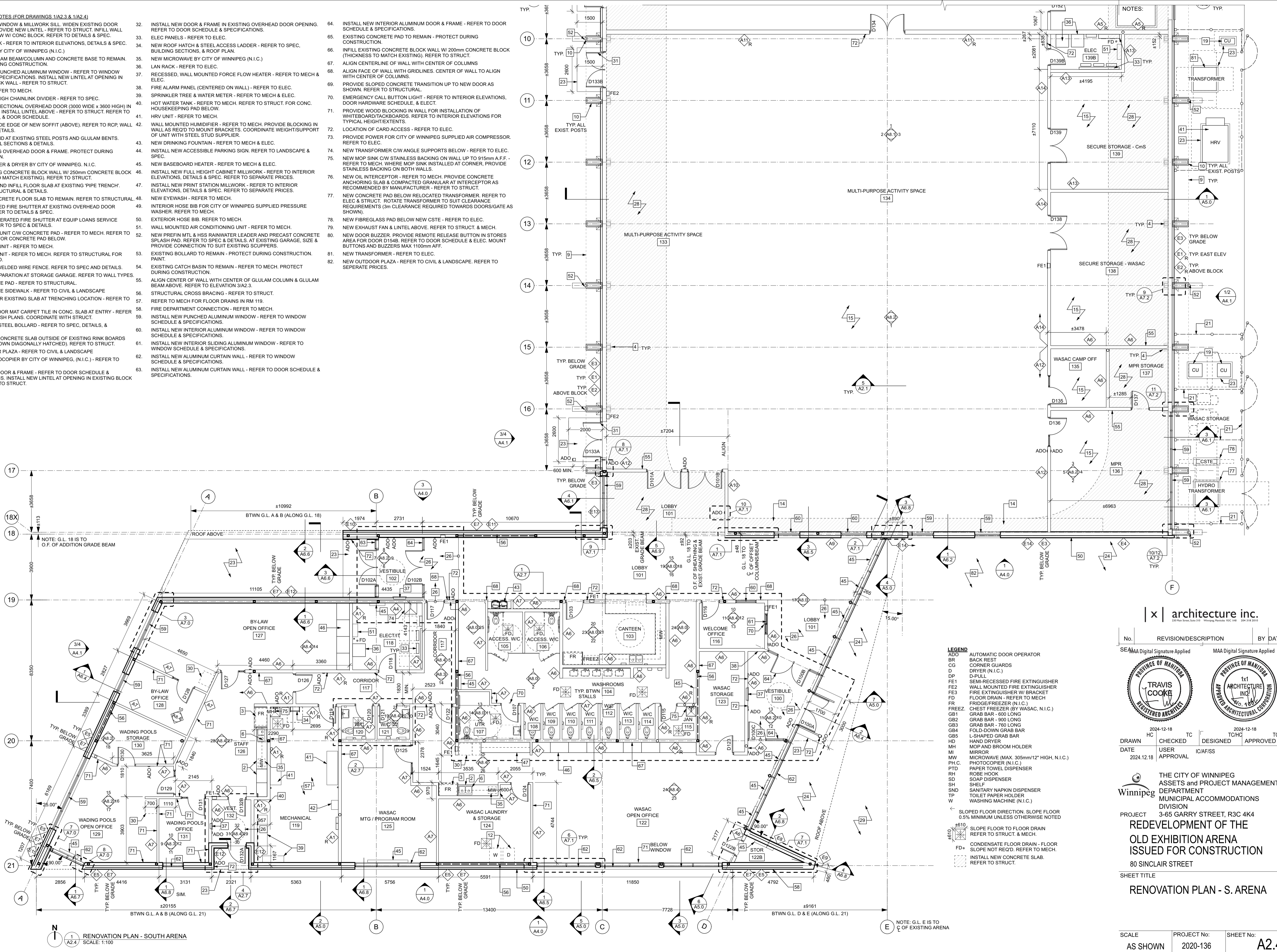


RENOVATION PLAN NOTES (FOR DRAWINGS 1/A2.3 & 1/A2.4)

- NEW SLIDING WINDOW & MILLWORK SILL. WIDEN EXISTING DOOR OPENING & PROVIDE NEW LINTEL - REFER TO STRUCT. INFILL WALL BELOW WINDOW W/ CONC BLOCK. REFER TO DETAILS & SPEC.
- NEW MILLWORK - REFER TO INTERIOR ELEVATIONS, DETAILS & SPEC.
- NEW FRIDGE BY CITY OF WINNIPEG (N.I.C.)
- EXISTING GLULAM BEAM/COLUMN AND CONCRETE BASE TO REMAIN. PROTECT DURING CONSTRUCTION.
- INSTALL NEW PUNCHED ALUMINUM WINDOW - REFER TO WINDOW SCHEDULE & SPECIFICATIONS. INSTALL NEW LINTEL AT OPENING IN EXISTING BLOCK WALL - REFER TO STRUCT.
- NEW SINK - REFER TO MECH.
- NEW 3050mm HIGH CHAINLINK DIVIDER - REFER TO SPEC.
- INSTALL NEW SECTIONAL OVERHEAD DOOR (3000 WIDE x 3600 HIGH) IN NEW OPENING. INSTALL LINTEL ABOVE - REFER TO STRUCT. REFER TO SPEC, DETAILS, & DOOR SCHEDULE.
- LINE OF OUTSIDE EDGE OF NEW SOFFIT (ABOVE) REFER TO RCP, WALL SECTIONS & DETAILS.
- NEW SURROUND AT EXISTING STEEL POSTS AND GLULAM BENTS. REFER TO WALL SECTIONS & DETAILS.
- PAINT EXISTING OVERHEAD DOOR & FRAME. PROTECT DURING CONSTRUCTION.
- FUTURE WASHER & DRYER BY CITY OF WINNIPEG, N.I.C.
- INFILL EXISTING CONCRETE BLOCK WALL W/ 250mm CONCRETE BLOCK (THICKNESS TO MATCH EXISTING). REFER TO STRUCT.
- CORE HOLES AND INFILL FLOOR SLAB AT EXISTING PIPE TRENCH. REFER TO STRUCTURAL & DETAILS.
- EXISTING CONCRETE FLOOR SLAB TO REMAIN. REFER TO STRUCTURAL.
- NEW MOTORIZED FIRE SHUTTER AT EXISTING OVERHEAD DOOR OPENING. REFER TO DETAILS & SPEC.
- NEW CHAIN-OPERATED FIRE SHUTTER AT EQUIP LOANS SERVICE WINDOW. REFER TO SPEC & DETAILS.
- AIR HANDLING UNIT C/W CONCRETE PAD - REFER TO MECH. REFER TO STRUCTURAL FOR CONCRETE PAD BELOW.
- CONDENSING UNIT - REFER TO MECH.
- MAKE-UP AIR UNIT - REFER TO MECH. REFER TO STRUCTURAL FOR CONCRETE PAD.
- INSTALL NEW WELDED WIRE FENCE. REFER TO SPEC AND DETAILS.
- 1.5 HR FIRE SEPARATION AT STORAGE GARAGE. REFER TO WALL TYPES.
- NEW CONCRETE PAD - REFER TO STRUCTURAL.
- NEW CONCRETE SIDEWALK - REFER TO CIVIL & LANDSCAPE
- PATCH & REPAIR EXISTING SLAB AT TRENCHING LOCATION - REFER TO STRUCT.
- RECESSED FLOOR MAT CARPET TILE IN CONC. SLAB AT ENTRY - REFER TO SPEC & FINISH PLANS. COORDINATE WITH STRUCT.
- NEW PAINTED STEEL BOLLARD - REFER TO SPEC, DETAILS, & STRUCTURAL.
- INSTALL NEW CONCRETE SLAB OUTSIDE OF EXISTING RINK BOARDS (EXTENT IS SHOWN DIAGONALLY HATCHED). REFER TO STRUCT.
- NEW OUTDOOR PLAZA - REFER TO CIVIL & LANDSCAPE
- FUTURE PHOTOCOPIER BY CITY OF WINNIPEG, (N.I.C.) - REFER TO MECH. & ELEC.
- INSTALL NEW DOOR & FRAME - REFER TO DOOR SCHEDULE & SPECIFICATIONS. INSTALL NEW LINTEL AT OPENING IN EXISTING BLOCK WALL - REFER TO STRUCT.
- INSTALL NEW DOOR & FRAME IN EXISTING OVERHEAD DOOR OPENING. REFER TO DOOR SCHEDULE & SPECIFICATIONS.
- ELEC PANELS - REFER TO ELEC.
- NEW ROOF HATCH & STEEL ACCESS LADDER - REFER TO SPEC, BUILDING SECTIONS, & ROOF PLAN.
- NEW MICROWAVE BY CITY OF WINNIPEG (N.I.C.)
- LAN RACK - REFER TO ELEC.
- RECESSED, WALL MOUNTED FORCE FLOW HEATER - REFER TO MECH & ELEC.
- FIRE ALARM PANEL (CENTERED ON WALL) - REFER TO ELEC.
- SPRINKLER TREE & WATER METER - REFER TO MECH & ELEC.
- HOT WATER TANK - REFER TO MECH. REFER TO STRUCT. FOR CONC. HOUSEKEEPING PAD BELOW.
- HRV UNIT - REFER TO MECH.
- WALL MOUNTED HUMIDIFIER - REFER TO MECH. PROVIDE BLOCKING IN WALL AS REQ'D TO MOUNT BRACKETS. COORDINATE WEIGHT/SUPPORT OF UNIT WITH STEEL STUD SUPPLIER.
- NEW DRINKING FOUNTAIN - REFER TO MECH & ELEC.
- INSTALL NEW ACCESSIBLE PARKING SIGN. REFER TO LANDSCAPE & SPEC.
- NEW BASEBOARD HEATER - REFER TO MECH & ELEC.
- INSTALL NEW FULL HEIGHT CABINET MILLWORK - REFER TO INTERIOR ELEVATIONS, DETAILS & SPEC. REFER TO SEPARATE PRICES.
- INSTALL NEW PRINT STATION MILLWORK - REFER TO INTERIOR ELEVATIONS, DETAILS & SPEC. REFER TO SEPARATE PRICES.
- NEW EYEWASH - REFER TO MECH.
- INTERIOR HOSE BIB FOR CITY OF WINNIPEG SUPPLIED PRESSURE WASHER. REFER TO MECH.
- EXTERIOR HOSE BIB. REFER TO MECH.
- WALL MOUNTED AIR CONDITIONING UNIT - REFER TO MECH.
- NEW PREFIN MTL & HSS RAINWATER LEADER AND PRECAST CONCRETE SPLASH PAD. REFER TO SPEC & DETAILS. AT EXISTING GARAGE. SIZE & PROVIDE CONNECTION TO SUIT EXISTING SCUPPERS.
- EXISTING BOLLARD TO REMAIN - PROTECT DURING CONSTRUCTION. PAINT.
- EXISTING CATCH BASIN TO REMAIN - REFER TO MECH. PROTECT DURING CONSTRUCTION.
- ALIGN CENTER OF WALL WITH CENTER OF GLULAM COLUMN & GLULAM BEAM ABOVE. REFER TO ELEVATION 3/A2.3.
- STRUCTURAL CROSS BRACING - REFER TO STRUCT.
- REFER TO MECH FOR FLOOR DRAINS IN RM 119.
- FIRE DEPARTMENT CONNECTION - REFER TO MECH.
- INSTALL NEW PUNCHED ALUMINUM WINDOW - REFER TO WINDOW SCHEDULE & SPECIFICATIONS.
- INSTALL NEW INTERIOR ALUMINUM WINDOW - REFER TO WINDOW SCHEDULE & SPECIFICATIONS.
- INSTALL NEW INTERIOR SLIDING ALUMINUM WINDOW - REFER TO WINDOW SCHEDULE & SPECIFICATIONS.
- INSTALL NEW ALUMINUM CURTAIN WALL - REFER TO WINDOW SCHEDULE & SPECIFICATIONS.
- INSTALL NEW ALUMINUM CURTAIN WALL - REFER TO DOOR SCHEDULE & SPECIFICATIONS.

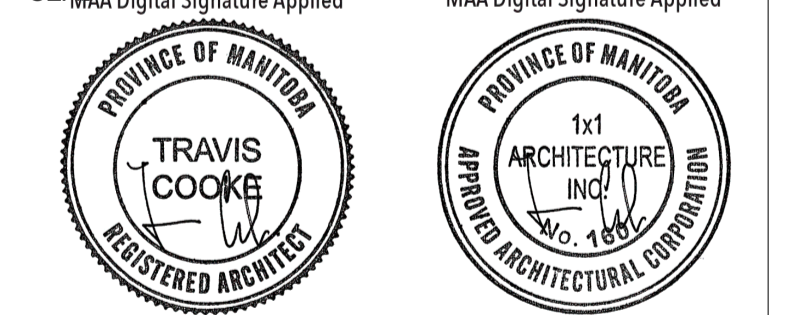
- INSTALL NEW INTERIOR ALUMINUM DOOR & FRAME - REFER TO DOOR SCHEDULE & SPECIFICATIONS.
- EXISTING CONCRETE PAD TO REMAIN - PROTECT DURING CONSTRUCTION.
- INFILL EXISTING CONCRETE BLOCK WALL W/ 200mm CONCRETE BLOCK (THICKNESS TO MATCH EXISTING). REFER TO STRUCT.
- ALIGN CENTERLINE OF WALL WITH CENTER OF COLUMNS
- ALIGN FACE OF WALL WITH GRIDLINES. CENTER OF WALL TO ALIGN WITH CENTER OF COLUMNS.
- PROVIDE SLOPED CONCRETE TRANSITION UP TO NEW DOOR AS SHOWN. REFER TO STRUCTURAL.
- EMERGENCY CALL BUTTON LIGHT - REFER TO INTERIOR ELEVATIONS, DOOR HARDWARE SCHEDULE, & ELEC
- PROVIDE WOOD BLOCKING IN WALL FOR INSTALLATION OF WHITEBOARD/TACKBOARDS. REFER TO INTERIOR ELEVATIONS FOR TYPICAL HEIGHT/EXTENTS.
- LOCATION OF CARD ACCESS - REFER TO ELEC.
- PROVIDE POWER FOR CITY OF WINNIPEG SUPPLIED AIR COMPRESSOR. REFER TO ELEC.
- NEW TRANSFORMER C/W ANGLE SUPPORTS BELOW - REFER TO ELEC.
- NEW MOP SINK C/W STAINLESS BACKING ON WALL UP TO 915mm AFF - REFER TO MECH. WHERE MOP SINK INSTALLED AT CORNER, PROVIDE STAINLESS BACKING ON BOTH WALLS.
- NEW OIL INTERCEPTOR - REFER TO MECH. PROVIDE CONCRETE ANCHORING SLAB & COMPACTED GRANULAR AT INTERCEPTOR AS RECOMMENDED BY MANUFACTURER - REFER TO STRUCT.
- NEW CONCRETE PAD BELOW RELOCATED TRANSFORMER. REFER TO ELEC & STRUCT. ROTATE TRANSFORMER TO SUIT CLEARANCE REQUIREMENTS (3m CLEARANCE REQUIRED TOWARDS DOORS/GATE AS SHOWN).
- NEW FIBREGLASS PAD BELOW NEW CSTE - REFER TO ELEC.
- NEW EXHAUST FAN & LINTEL ABOVE. REFER TO STRUCT. & MECH.
- NEW DOOR BUZZER. PROVIDE REMOTE RELEASE BUTTON IN STORES AREA FOR DOOR D154B. REFER TO DOOR SCHEDULE & ELEC. MOUNT BUTTONS AND BUZZERS MAX 1100mm AFF.
- NEW TRANSFORMER - REFER TO ELEC.
- NEW OUTDOOR PLAZA - REFER TO CIVIL & LANDSCAPE. REFER TO SEPARATE PRICES.



- LEGEND**
- ADO AUTOMATIC DOOR OPERATOR
 - BR BACK REST
 - CG CORNER GUARDS
 - D DRYER (N.I.C.)
 - DP D-PULL
 - FE1 SEMI-RECESSED FIRE EXTINGUISHER
 - FE2 WALL MOUNTED FIRE EXTINGUISHER
 - FE3 FIRE EXTINGUISHER W/ BRACKET
 - FD FLOOR DRAIN - REFER TO MECH
 - FR FRIDGE/FREEZER (N.I.C.)
 - FREEZ CHEST FREEZER (BY WASAC, N.I.C.)
 - GB1 GRAB BAR - 600 LONG
 - GB2 GRAB BAR - 900 LONG
 - GB3 GRAB BAR - 760 LONG
 - GB4 FOLD-DOWN GRAB BAR
 - GB5 L-SHAPED GRAB BAR
 - HD HAND DRYER
 - MH MOP AND BROOM HOLDER
 - MI MIRROR
 - MV MICROWAVE (MAX. 305mm/12" HIGH, N.I.C.)
 - PH.C. PHOTOCOPIER (N.I.C.)
 - PTD PAPER TOWEL DISPENSER
 - RD ROBE HOOK
 - SD SOAP DISPENSER
 - SH SHELF
 - SND SANITARY NAPKIN DISPENSER
 - TP TOILET PAPER HOLDER
 - W WASHING MACHINE (N.I.C.)
- SLOPED FLOOR DIRECTION. SLOPE FLOOR 0.5% MINIMUM UNLESS OTHERWISE NOTED
 - 4610 SLOPE FLOOR TO FLOOR DRAIN REFER TO STRUCT. & MECH.
 - FD* CONDENSATE FLOOR DRAIN - FLOOR SLOPE NOT REQ'D. REFER TO MECH.
 - INSTALL NEW CONCRETE SLAB. REFER TO STRUCT.

x | architecture inc.

No.	REVISION/DESCRIPTION	BY	DATE



DATE	USER	APPROVAL	DATE	USER	APPROVAL
2024.12.18	HC		2024.12.18	TC	
2024.12.18					

THE CITY OF WINNIPEG
ASSETS AND PROJECT MANAGEMENT
DEPARTMENT
MUNICIPAL ACCOMMODATIONS
DIVISION

PROJECT
**REDEVELOPMENT OF THE
OLD EXHIBITION ARENA
ISSUED FOR CONSTRUCTION**
80 SINCLAIR STREET
SHEET TITLE
RENOVATION PLAN - S. ARENA

SCALE	PROJECT No:	SHEET No:
AS SHOWN	2020-136	A2.4

DRAWING SHEET SIZE: A1 (841mm x 594mm) PLOT 1:1