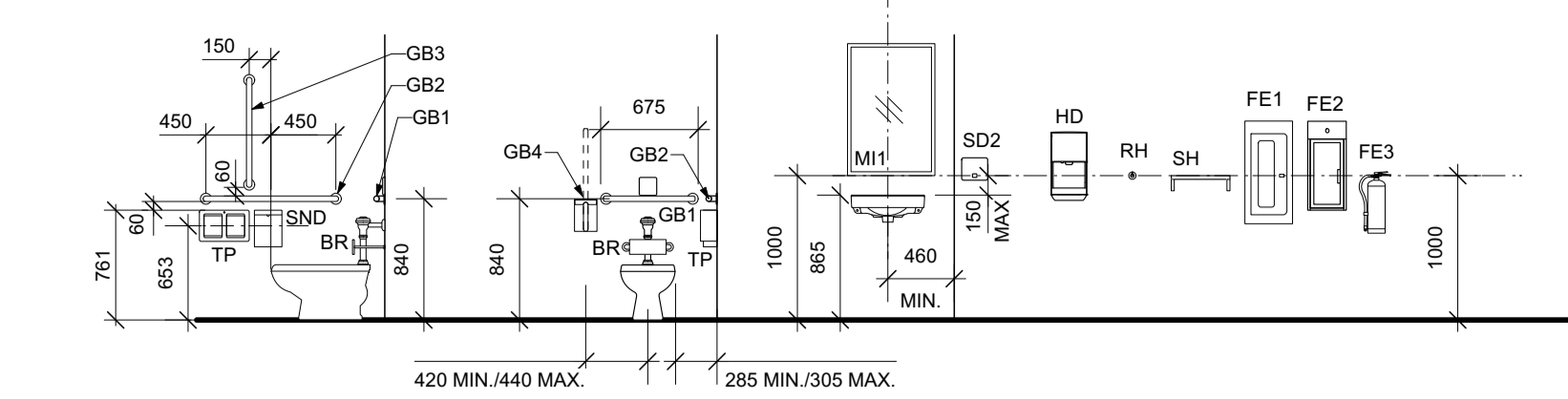


NOTES:

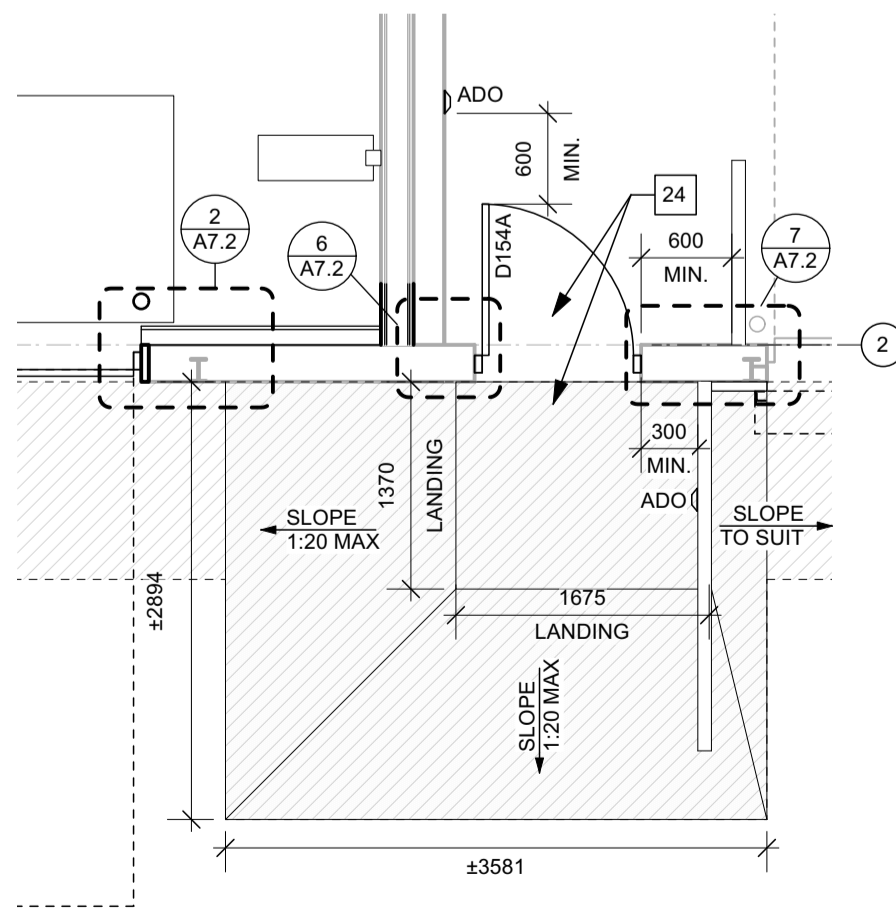
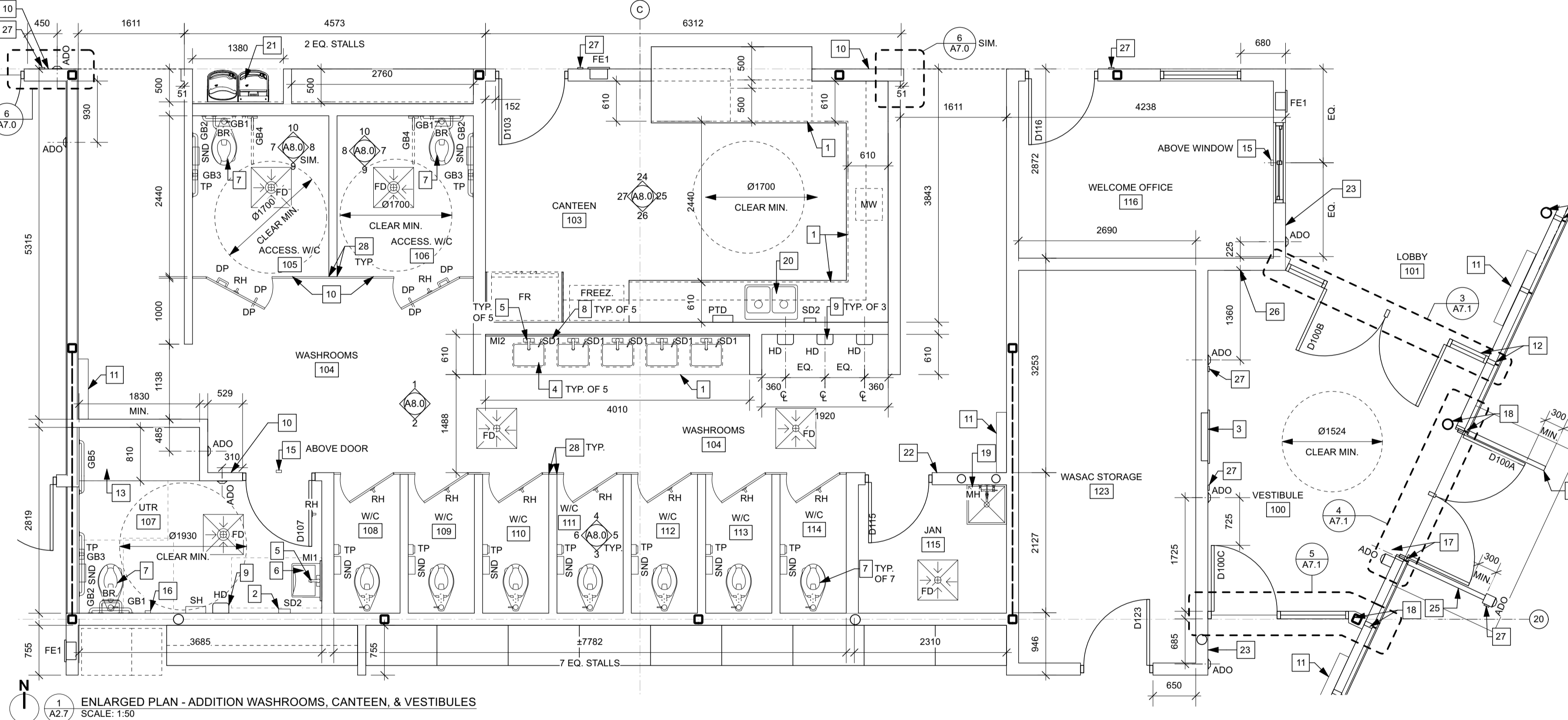
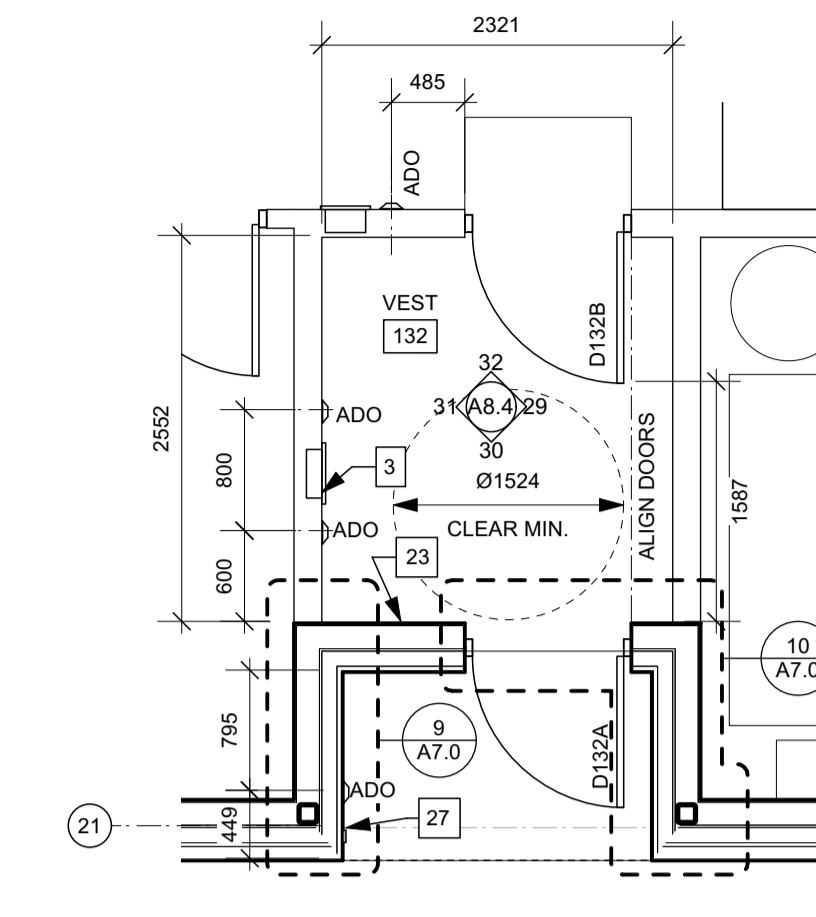
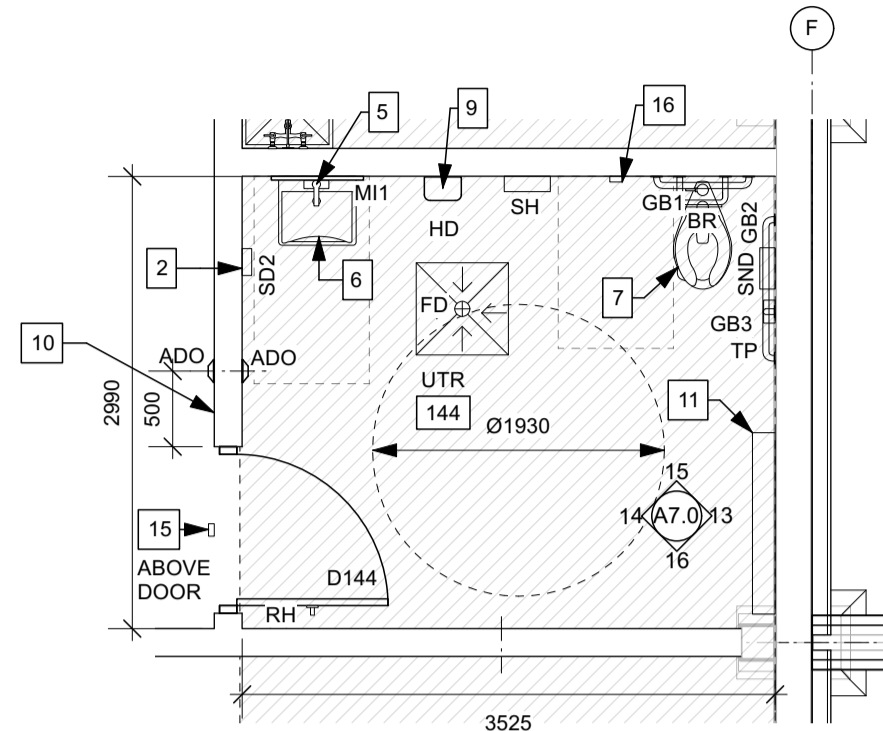
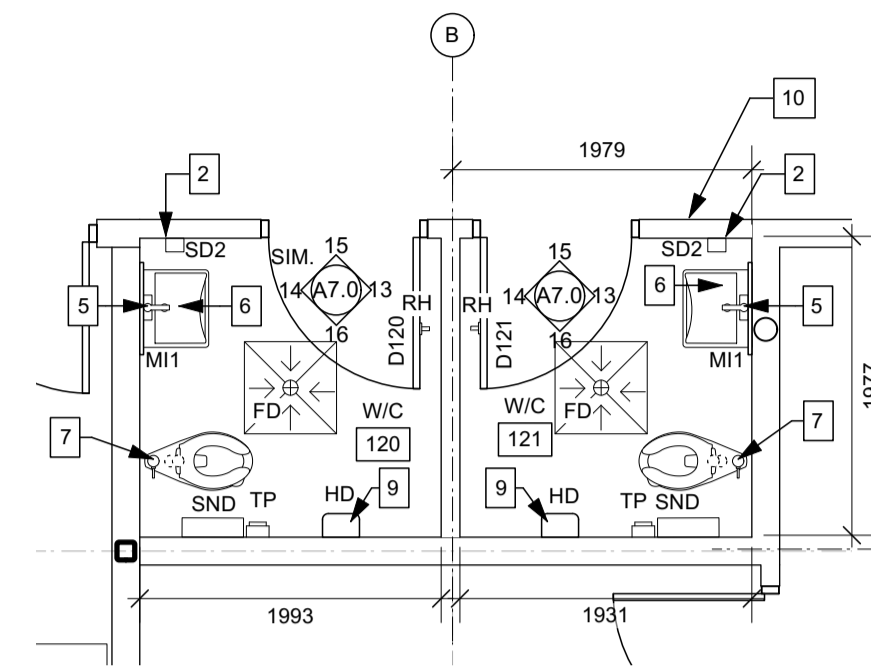
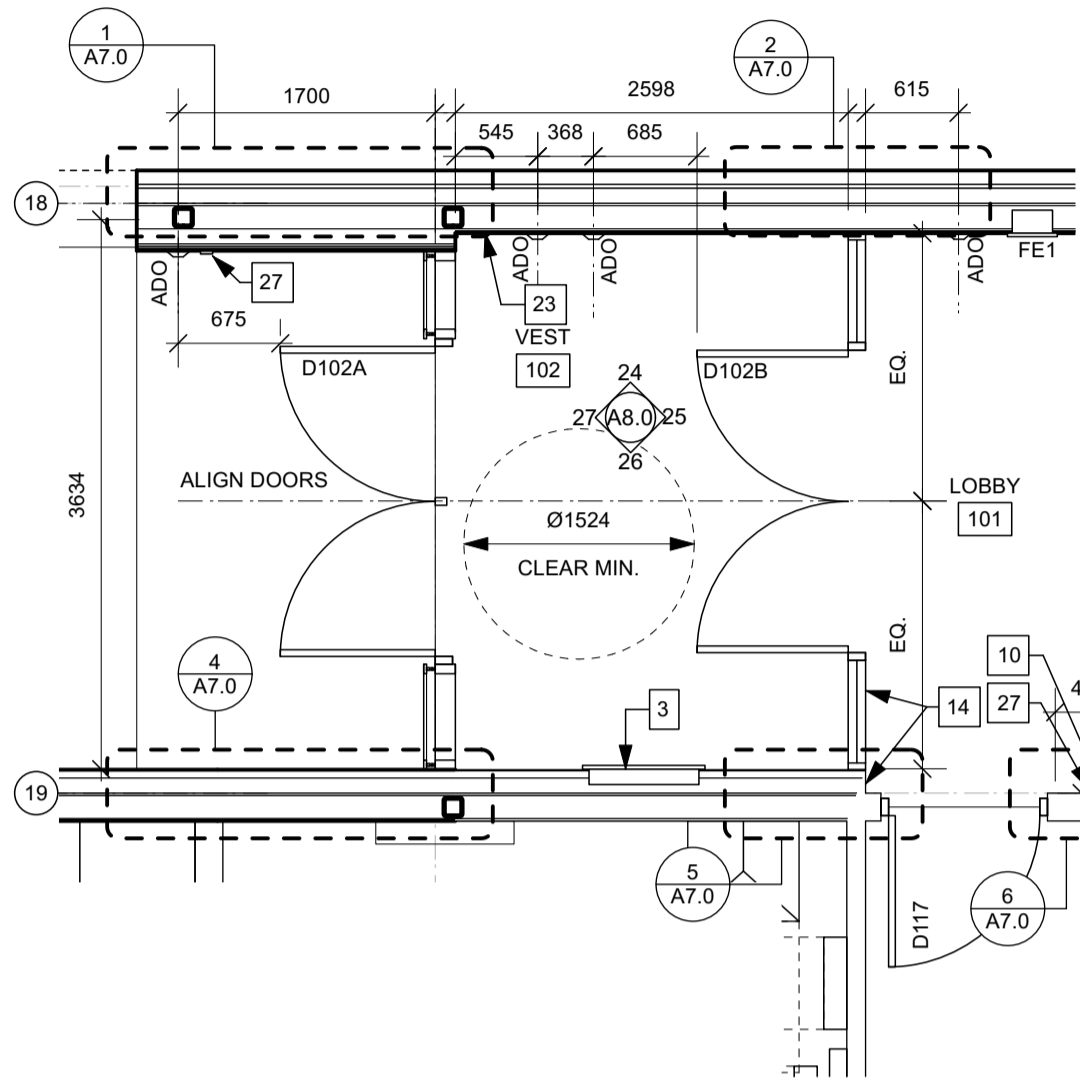
- LEGEND**
- ADO AUTOMATIC DOOR OPERATOR
 - BR BACK REST
 - CG CORNER GUARDS
 - D DRYER (N.I.C.)
 - DP D-PULL
 - FE1 SEMI-RECESSED FIRE EXTINGUISHER
 - FE2 WALL MOUNTED FIRE EXTINGUISHER
 - FE3 FIRE EXTINGUISHER W/BACKET
 - FD FLOOR DRAIN - REFER TO MECH
 - FR FRIDGE/FREEZER (N.I.C.)
 - FREEZ CHEST FREEZER (BY WASAC, N.I.C.)
 - GB1 GRAB BAR - 600 LONG
 - GB2 GRAB BAR - 900 LONG
 - GB3 GRAB BAR - 760 LONG
 - GB4 FOLD-DOWN GRAB BAR
 - GB5 L-SHAPED GRAB BAR
 - HD HAND DRYER
 - MH MOP AND BROOM HOLDER
 - MI MIRROR
 - MW MICROWAVE (MAX. 305mm/12" HIGH, N.I.C.)
 - PH.C. PHOTOCOPIER (N.I.C.)
 - PTD PAPER TOWEL DISPENSER
 - RH ROBE HOOK
 - SD SOAP DISPENSER
 - SH SHELF
 - SND SANITARY NAPKIN DISPENSER
 - TP TOILET PAPER HOLDER
 - W WASHING MACHINE (N.I.C.)
- ← SLOPED FLOOR DIRECTION. SLOPE FLOOR 0.5% MINIMUM UNLESS OTHERWISE NOTED
- ↘ SLOPE FLOOR TO FLOOR DRAIN REFER TO STRUCT. & MECH.
- ↘ CONDENSATE FLOOR DRAIN - FLOOR SLOPE NOT REQ'D. REFER TO MECH.
- ▨ INSTALL NEW CONCRETE SLAB. REFER TO STRUCT.

ENLARGED PLAN KEYNOTES

1. MILLWORK - REFER TO INTERIOR ELEVATIONS, DETAILS, & SPEC
2. WALL MOUNTED, MANUAL SOAP DISPENSER - REFER TO INTERIOR ELEVATIONS & SPEC.
3. RECESSED FORCE FLOW HEATER - REFER TO ELEC. & MECH.
4. INTEGRATED SOLID SURFACE SINKS - REFER TO MECH, MILLWORK DETAILS, & SPEC
5. AUTOMATIC FAUCET - REFER TO MECH & ELEC
6. WALL MOUNT SINK - REFER TO MECH
7. TOILET C/W AUTOMATIC FLUSH - REFER TO MECH & ELEC
8. AUTOMATIC COUNTER MOUNTED SOAP DISPENSER - REFER TO INTERIOR ELEVATIONS, ELEC. & SPEC.
9. AUTOMATIC HAND DRYER - REFER TO INTERIOR ELEVATIONS, ELEC. & SPEC.
10. WASHROOM SIGNAGE - REFER TO INTERIOR ELEVATIONS & SPEC.
11. BASEBOARD HEATER - REFER TO MECH & ELEC.
12. CENTER ALUMINUM DOOR FRAME ON MULLION AS SHOWN. REFER TO DETAILS.
13. SOLID SURFACE CHANGE BENCH. REFER TO DETAILS.
14. ALIGN FACE OF INTERIOR ALUMINUM DOOR FRAME WITH ADJACENT WALL AS SHOWN. REFER TO DETAILS.
15. EMERGENCY CALL LIGHT - REFER TO ELEC.
16. EMERGENCY CALL BUTTON - REFER TO ELEC.
17. OPERATOR AND BOLLARD ON MULLION AS SHOWN. REFER TO DETAILS & DOOR SCHEDULE.
18. CENTER COLUMN ON MULLION AS SHOWN. REFER TO DETAILS.
19. NEW MOP SINK C/W STAINLESS BACKING ON WALL UP TO 915mm A.F.F. - REFER TO MECH. WHERE MOP SINK INSTALLED AT CORNER, PROVIDE STAINLESS BACKING ON BOTH WALLS.
20. COUNTER MOUNTED SINK - REFER TO MECH.
21. DRINKING FOUNTAIN - REFER TO MECH.
22. JANITOR ROOM SIGNAGE - REFER TO INTERIOR ELEVATIONS & SPEC
23. EXIT SIGNAGE - REFER TO INTERIOR ELEVATIONS & SPEC
24. PROVIDE LEVEL LANDING IN FRONT OF DOOR AS SHOWN. HEIGHT TO MATCH ADJACENT FLOOR IN WASH BAY
25. DOOR GUARD - REFER TO DOOR SCHEDULE
26. FIRE ALARM PANEL - REFER TO ELEC.
27. CARD ACCESS READER - REFER TO ELEC.
28. PARTITION SUPPLIER TO PROVIDE ANGLE BRACKETS AT CONNECTION OF STILES TO WALLS (BOTH SIDES OF WALL). ANGLE FINISH TO BE STAINLESS STEEL OR TO MATCH COLOUR OF CERAMIC TILE.

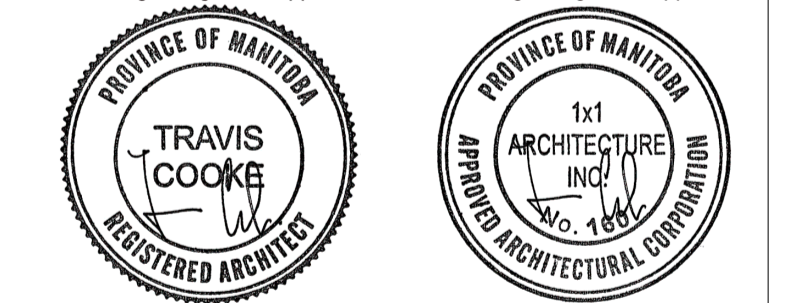


420 MIN / 440 MAX.
785 MIN / 805 MAX.



architecture inc.

No.	REVISION/DESCRIPTION	BY	DATE



DATE	USER	IC/AF/ISS	DATE	TC/HC	APPROVED
2024.12.18					

THE CITY OF WINNIPEG
ASSETS and PROJECT MANAGEMENT
DEPARTMENT
MUNICIPAL ACCOMMODATIONS
DIVISION

PROJECT 3-65 GARRY STREET, R3C 4K4
**REDEVELOPMENT OF THE
OLD EXHIBITION ARENA
ISSUED FOR CONSTRUCTION**
80 SINCLAIR STREET

SHEET TITLE
ENLARGED PLANS

SCALE	PROJECT No:	SHEET No:
AS SHOWN	2020-136	A2.7

DRAWING SHEET SIZE: A1 (841mm x 594mm) PLOT 1:1