

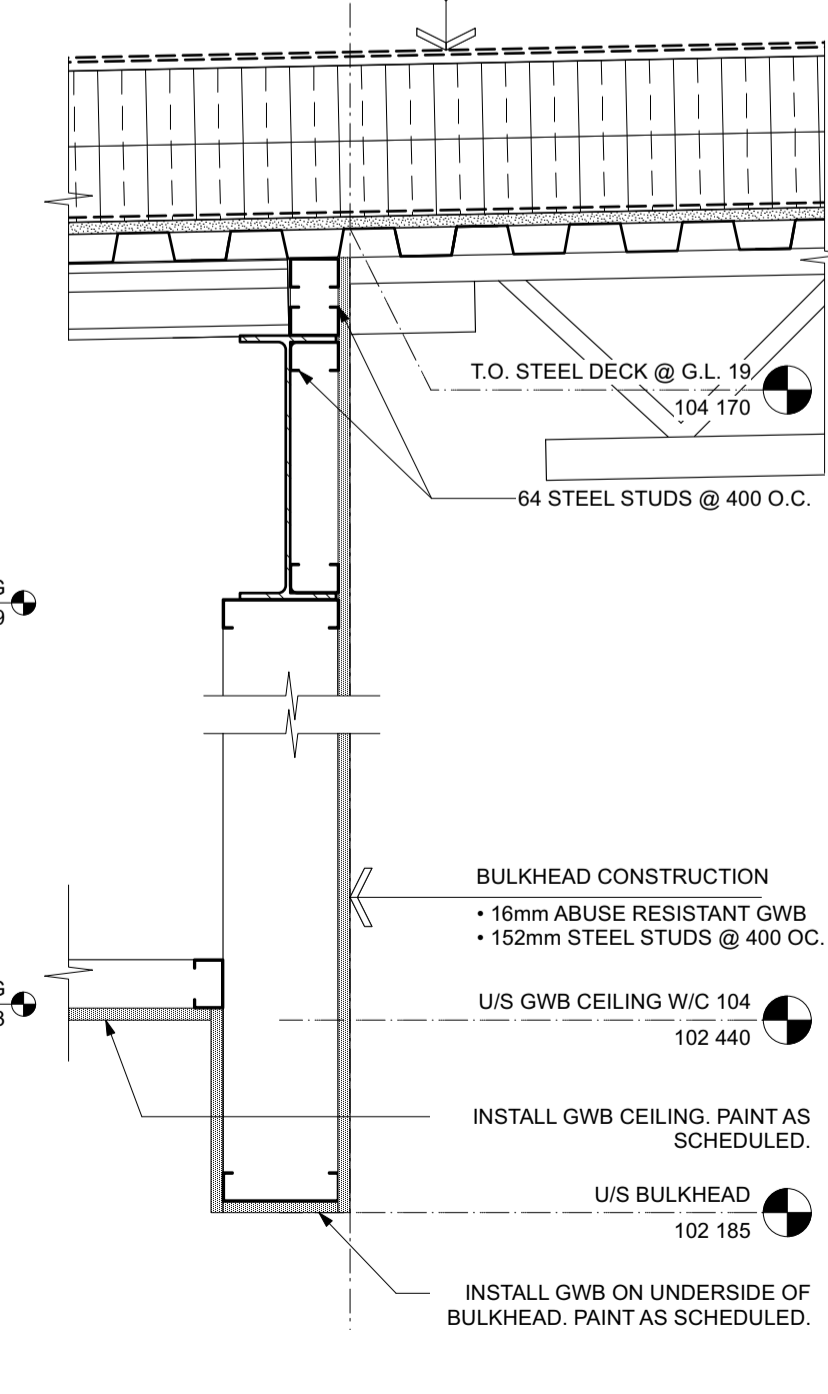
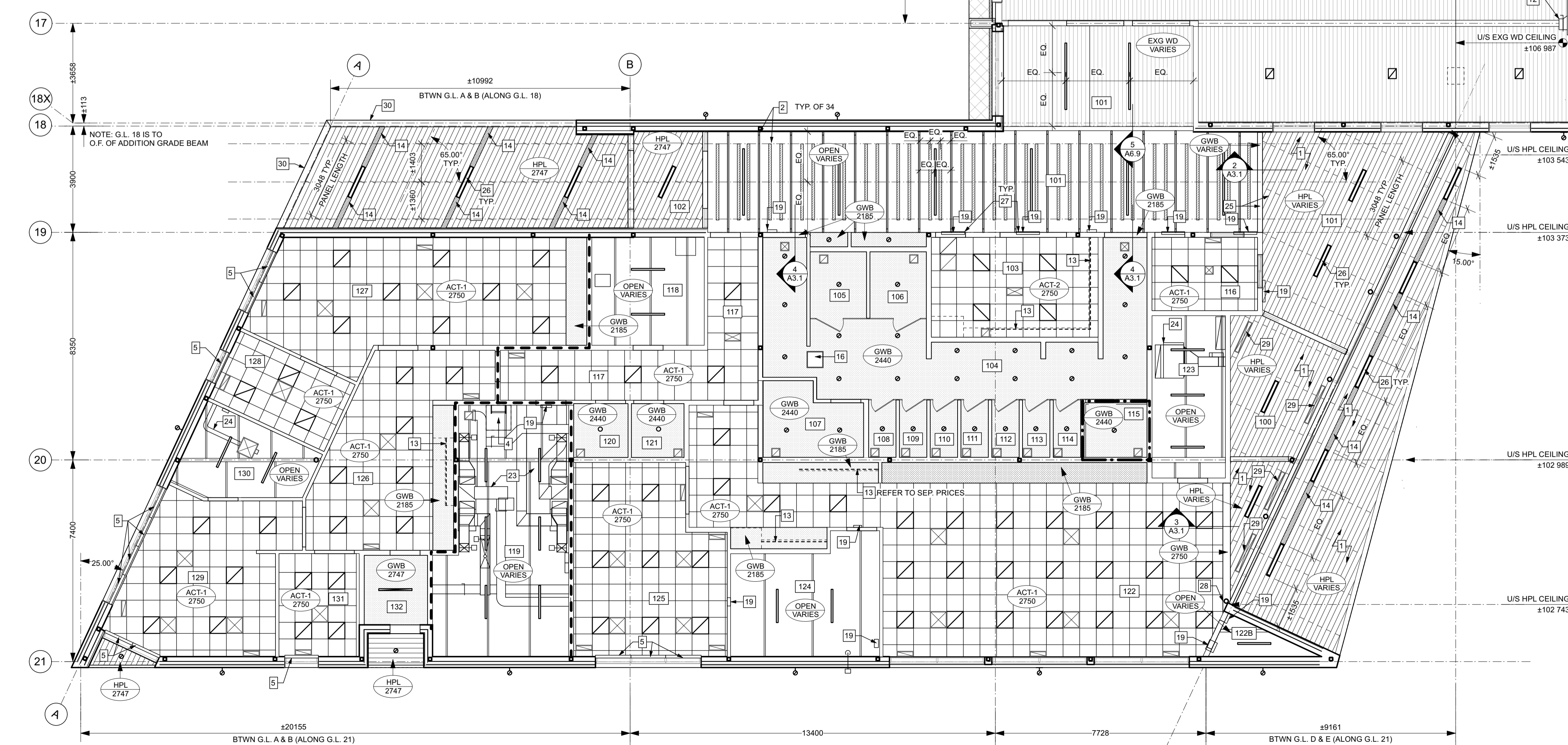
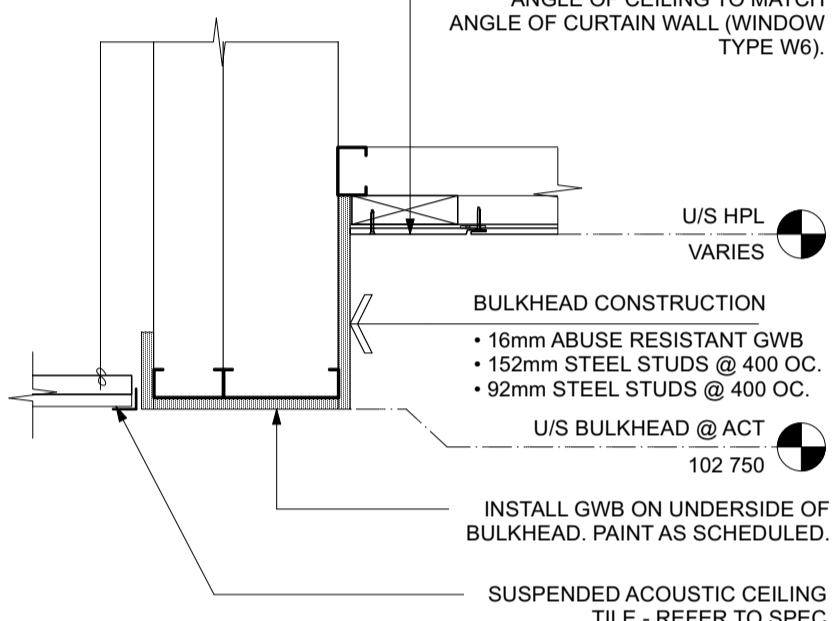
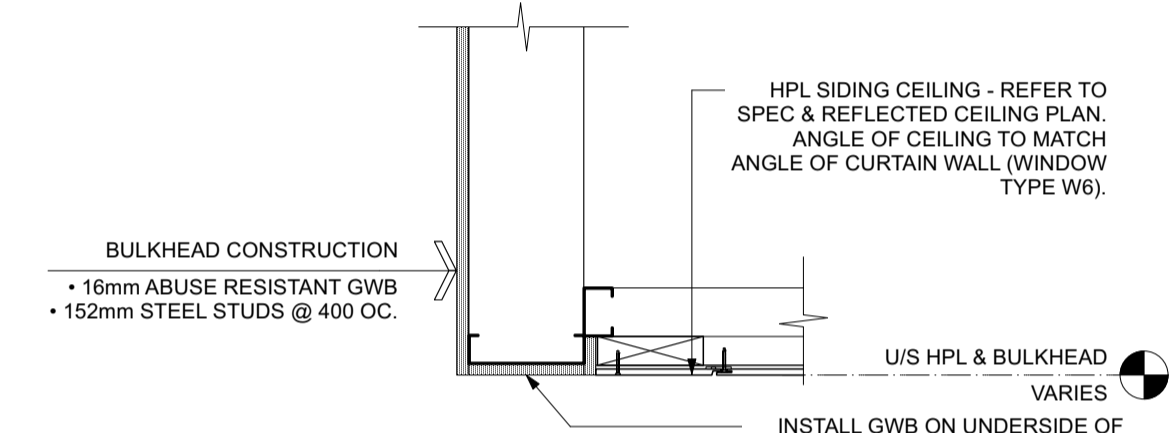
REFLECTED CEILING PLAN LEGEND:

- ACT CEILING - REFER TO SPEC.
- EXISTING WOOD DECK - REFER TO SPEC.
- GWB CEILING - REFER TO SPEC.
- NEW HPL SIDING SOFFIT & CEILING - REFER TO SPEC
- FIBER REINFORCED CEMENTITOUS SOFFIT PANEL - REFER TO SPEC
- ACOUSTIC LINEAR BEAM BAFFLE (BFL) - REFER TO SPEC
- SOFFIT VENT - REFER TO SPEC & DETAILS
- MECHANICAL GRILLE/DIFFUSER - REFER TO MECH.
- SUSPENDED LIGHT - REFER TO ELEC.
- SURFACE MOUNTED LINEAR LIGHT - REFER TO ELEC.
- SUSPENDED LINEAR LIGHT - REFER TO ELEC.
- RECESSED LINEAR LIGHT IN HPL CEILING/SOFFIT - REFER TO ELEC.
- 600x600 RECESSED LIGHT IN ACT - REFER TO ELEC.
- POT LIGHT - REFER TO ELEC.
- UNDER CABINET STRIP LIGHT - REFER TO ELEC.
- EXTERIOR WALL MOUNTED LIGHT - REFER TO ELEC.

REFLECTED CEILING PLAN - RENOVATION NOTES (FOR DRAWINGS 1/A3.0 & 1/A3.1)

- HPL CEILING & CANOPY ON EAST SIDE OF ADDITION IS CONSTRUCTED ON AN ANGLE - SITE VERIFY PANEL JOINT & LIGHTING LOCATIONS FOR FINAL APPROVAL BY CONTRACT ADMINISTRATOR. ANGLE OF EAST CANOPY SOFFIT DIFFERS FROM INTERIOR CEILING.
- UNDERSIDE OF ACOUSTIC BAFFLES TO ALIGN WITH UNDERSIDE OF BOTTOM CHORD OF STEEL JOISTS. BAFFLES TO BE INSTALLED ON SAME ANGLE AS JOISTS. REFER TO SPEC.
- NEW OVERHEAD DOOR - REFER TO SPEC & DETAILS.
- 91mmx91mm ROOF HATCH C/W STEEL ACCESS LADDER - REFER TO SPEC AND DETAILS.
- NEW ROLLER BLINDS - REFER TO SPEC.
- FIRE RATED SHUTTER AT NEW SLIDING WINDOW OPENING. REFER TO SPEC AND DETAILS.
- FIRE RATED SHUTTER AT EXISTING OVERHEAD DOOR OPENING. REFER TO SPEC AND DETAILS.
- LINE OF CHAIN LINK DIVIDER BELOW (SHOWN DASHED) EXISTING OVERHEAD DOOR TO REMAIN. PROTECT DURING CONSTRUCTION.
- NEW UNIT HEATER (CEILING MOUNTED) - REFER TO MECH 25 & ELEC.
- NEW CEILING FAN - REFER TO MECH & ELEC.
- DUCT MOUNTED GRILLE - REFER TO MECH.
- NEW UNDERCABINET STRIP LIGHT FIXTURE - REFER TO ELEC. & MILLWORK DETAILS.
- NEW PERFORATED METAL VENT STRIP (TO SUIT WIDTH OF ONE HPL SIDING PANEL) - REFER TO SPEC AND DETAILS
- NEW PERFORATED METAL VENT STRIP - REFER TO SPEC AND DETAILS
- PROVIDE ACCESS HATCH FOR PLUMBING ACCESS ABOVE CEILING. REFER TO MECH. COORDINATE FINAL LOCATION OF HATCH TO AVOID CONFLICT WITH WASHROOM LIGHT FIXTURES.
- INSTALL NEW WOOD FRAMING & BENT MTL PLATE TO INFILL EXISTING EXHAUST OPENINGS. INSTALL WOOD FRAMING & PROVIDE OPENING IN MTL PLATE AS REQ'D FOR CEILING FANS. REFER TO MECH. STRUCT. & DETAIL 2/A2.1.
- INSULATED RELIEF HOOD ABOVE DOOR - REFER TO MECH. & DETAILS.
- WALL MOUNTED GRILLE - REFER TO MECH.
- EXHAUST FAN - REFER TO MECH.
- MAKEUP AIR UNIT AND ASSOCIATED DUCTWORK - REFER TO MECH.
- AIR HANDLING UNIT AND ASSOCIATED DUCTWORK - REFER TO MECH.
- HRV AND ASSOCIATED DUCTWORK - REFER TO MECH.
- FAN COILS AND ASSOCIATED DUCTWORK - REFER TO MECH.
- U/S OF GWB BULKHEAD TO FOLLOW ANGLE OF HPL CEILING
- WHERE LIGHTS ARE CENTERED IN HPL, PROVIDE ADDITIONAL SUPPORT FRAMING ABOVE TO PROVIDE SUPPORT FOR EDGES OF HPL AS REQ'D
- ALIGN TOPS OF SIDEWALL GRILLES IN LOBBY 101. REFER TO MECH. REFER TO INTERIOR ELEVATIONS.
- GWB BULKHEAD TO FULLY ENCLOSE EXPOSE COLUMN - ADJUST WIDTH AS REQ'D.
- CENTER LINEAR DIFFUSERS ON HPL SIDING PLANK FACE. REFER TO MECH.
- STEEL BENT PLATE (POWDERCOATED FINISH) - REFER TO STRUCT. MITRE AT CANOPY CORNER.

- 1.5 HR FIRE SEPARATION
- 1 HR FIRE SEPARATION
- 0 HR FIRE SEPARATION



No.	REVISION/DESCRIPTION	BY	DATE

SEAMA Digital Signature Applied MAA Digital Signature Applied

PROVINCE OF MANITOBA REGISTERED ARCHITECT TRAVIS COOKE No. 104170

PROVINCE OF MANITOBA REGISTERED ARCHITECTURAL CONSULTANT 1x1 ARCHITECTURE INC. No. 104170

2024-12-18 HC CHECKED TC 2024-12-18 TC
DRAWN USER DESIGNED TCHC
DATE APPROVAL ICA/ISS APPROVED

THE CITY OF WINNIPEG ASSETS and PROJECT MANAGEMENT DEPARTMENT MUNICIPAL ACCOMMODATIONS DIVISION
PROJECT 3-65 GARRY STREET, R3C 4K4
REDEVELOPMENT OF THE OLD EXHIBITION ARENA ISSUED FOR CONSTRUCTION
80 SINCLAIR STREET
SHEET TITLE RENOVATION RCP - S. ARENA

SCALE AS SHOWN PROJECT No: 2020-136 SHEET No: A3.1
DRAWING SHEET SIZE: A1 (841mm x 594mm) PLOT 1:1