

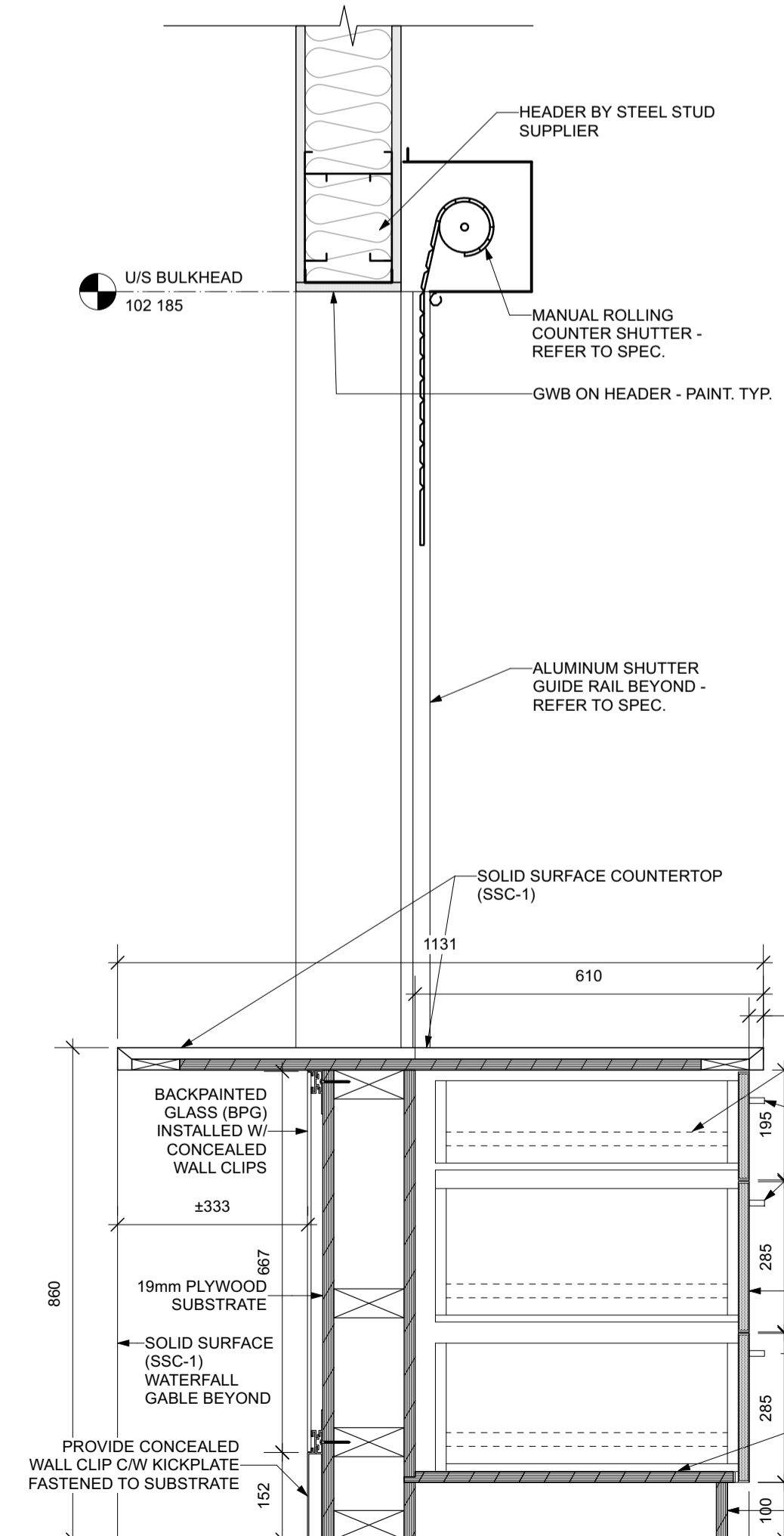
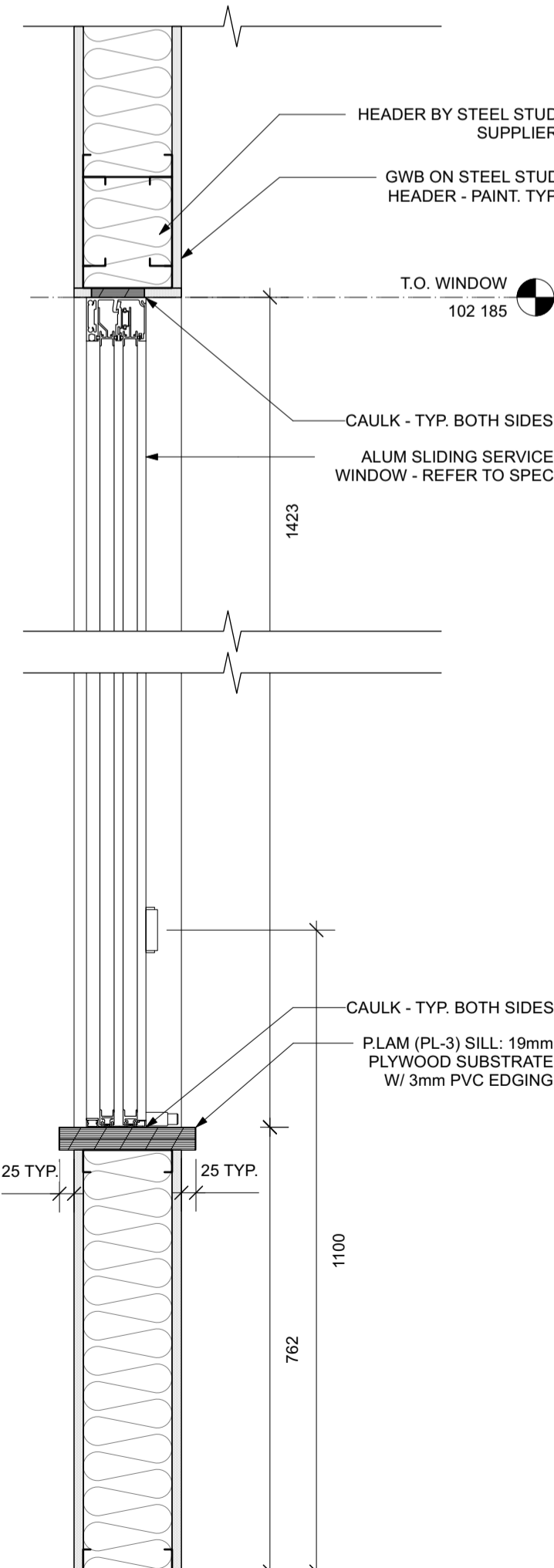
1 CANTEN @ MICROWAVE 1:10

2 CANTEN @ SINK 1:10

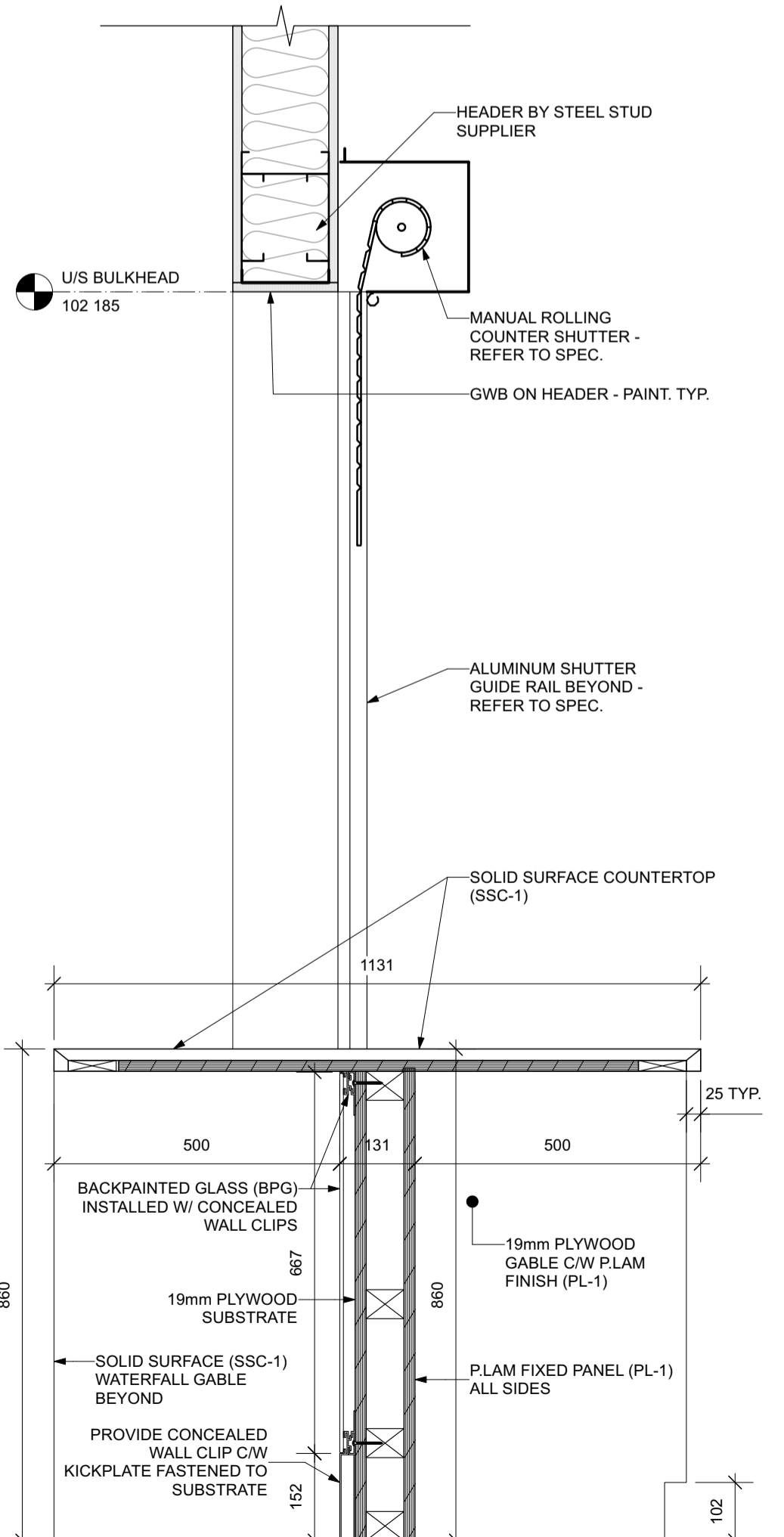
3 TYPICAL CANTEN MILLWORK - DRAWER / CABINET 1:10

4 TYPICAL CANTEN MILLWORK - DRAWERS 1:10

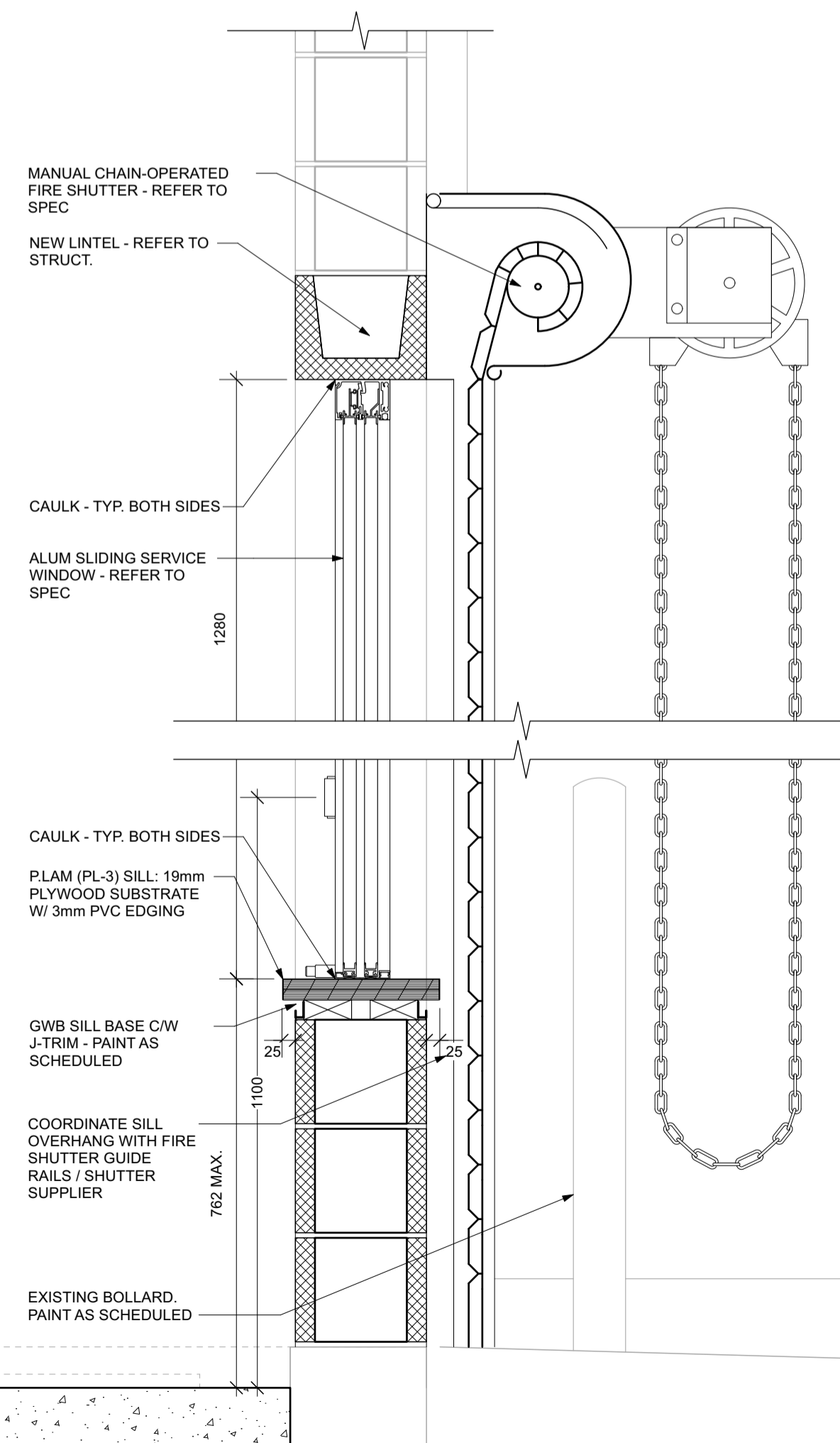
5 FULL HEIGHT CABINET 1:10



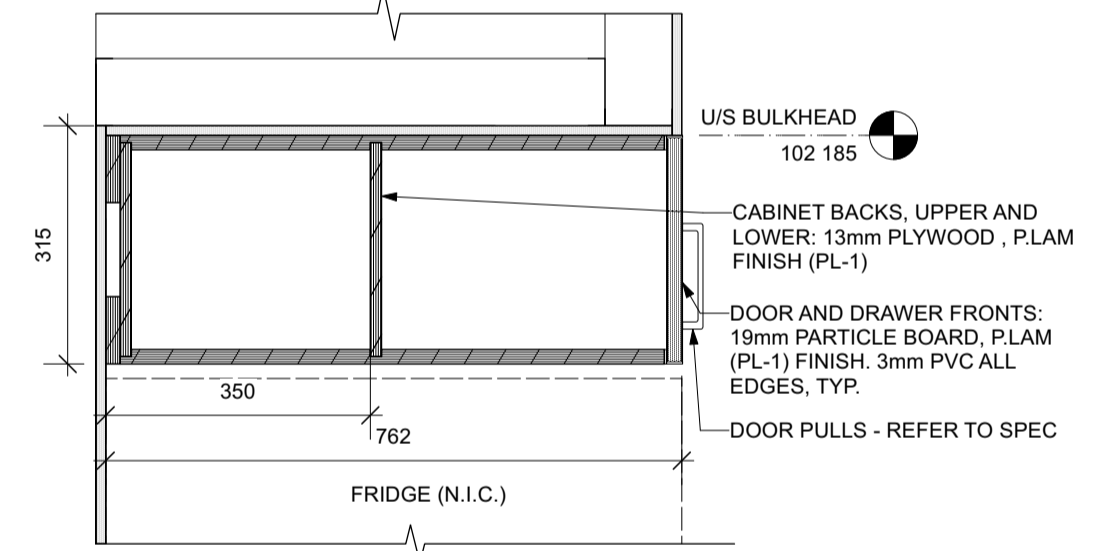
7 CANTEN SERVICE COUNTER @ DRAWERS 1:10



8 CANTEN SERVICE COUNTER @ CLEAR KNEE SPACE 1:10



9 EQUIPMENT LOANS - SLIDING WINDOW 1:10



10 UPPER CABINET ABOVE FRIDGE - TYP. 1:10

NOTES:

PROVIDE PLAM (PL-2) ON ALL FULL HEIGHTS CABINETS EXCEPT FOR FULL HEIGHT CABINETS LOCATED IN STAFF AREA (RM 126) - IN STAFF ROOM (RM 126) PROVIDE FULL HEIGHT CABINETS IN PLAM (PL-1) FINISH

x | architecture inc.

No.	REVISION/DESCRIPTION	BY	DATE
1			



DATE	USER	APPROVAL	DATE	USER	APPROVAL
2024.12.18			2024.12.18		

THE CITY OF WINNIPEG
 ASSETS AND PROJECT MANAGEMENT
 DEPARTMENT
 MUNICIPAL ACCOMMODATIONS
 DIVISION

PROJECT
 3-65 GARRY STREET, R3C 4K4
**REDEVELOPMENT OF THE
 OLD EXHIBITION ARENA
 ISSUED FOR CONSTRUCTION**
 80 SINCLAIR STREET

SHEET TITLE
MILLWORK DETAILS

SCALE	PROJECT No:	SHEET No:
AS SHOWN	2020-136	A9.0