

SPECIFIC ELECTRICAL NOTES

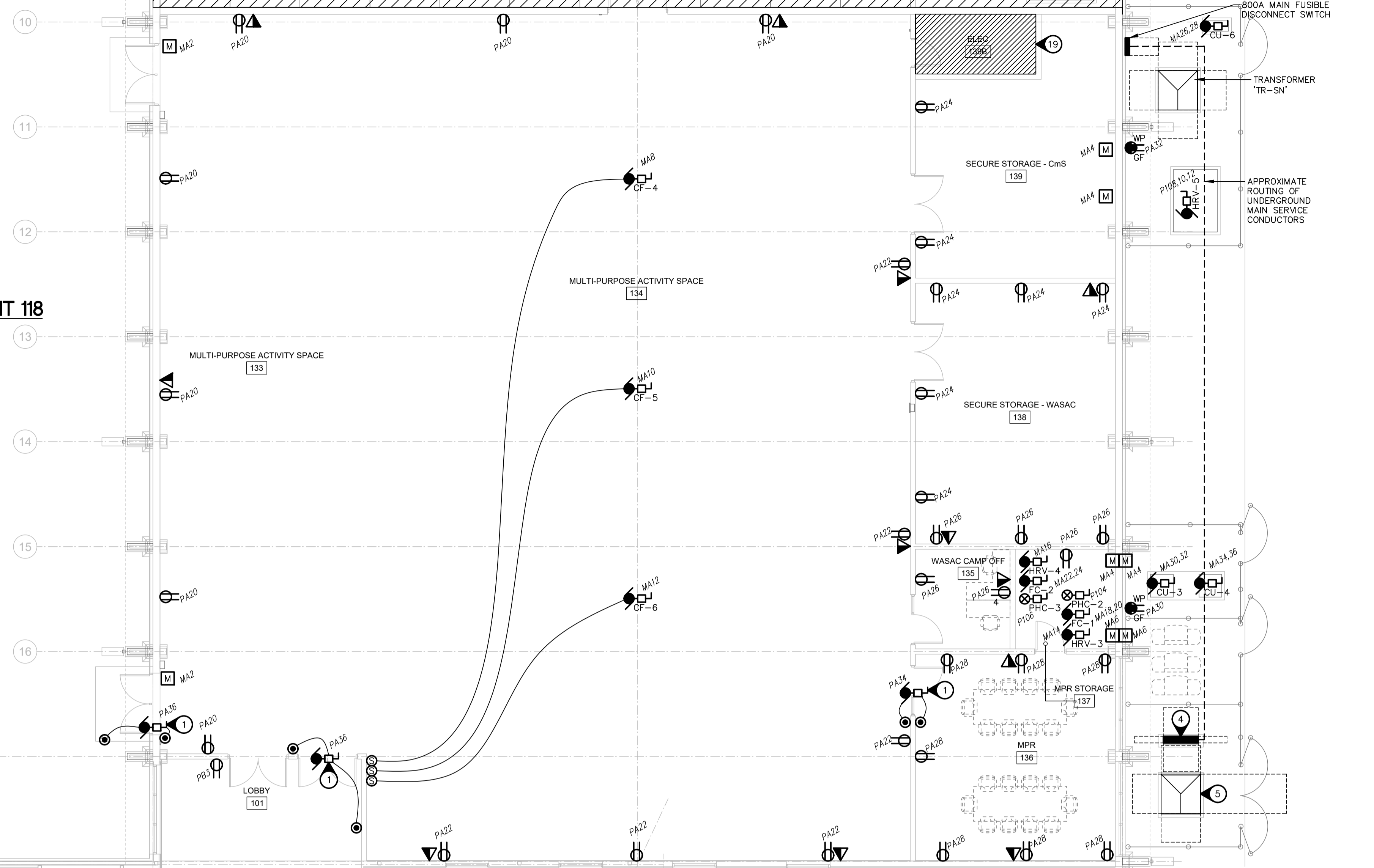
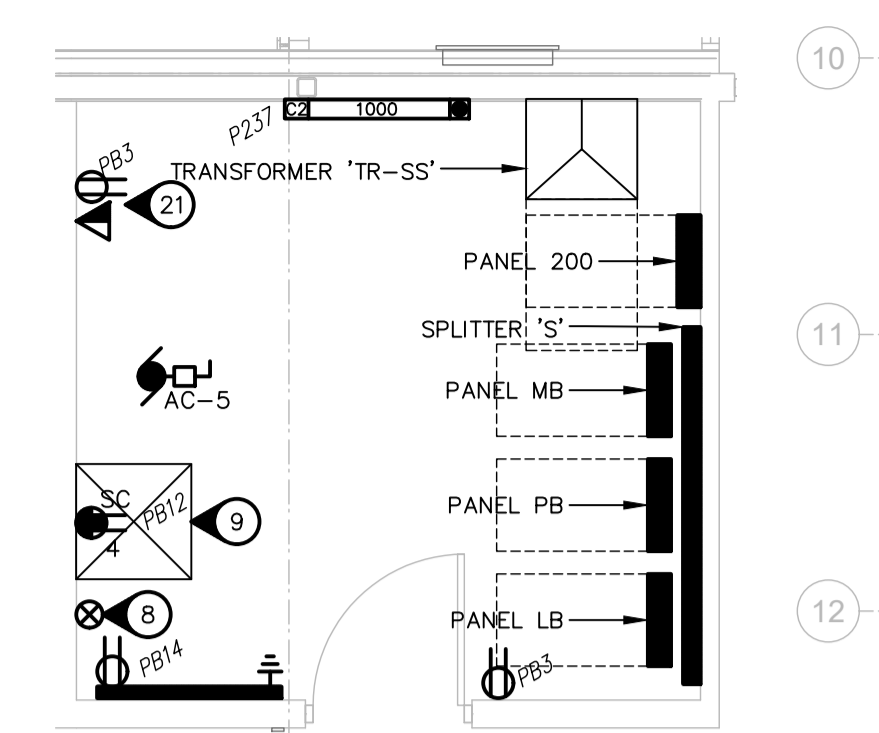
- 1 WIRE AND CONNECT POWER DOOR OPERATOR AND ALL RELATED CONTROLS. CONFIRM EXACT REQUIREMENTS WITH MANUFACTURER PRIOR TO ROUGH-IN.
- 2 APPROXIMATE LOCATION OF FIRE ALARM PANEL.
- 3 PROVIDE POWER CIRCUITS FOR MECHANICAL CONTROLS. COORDINATE WITH MECHANICAL CONTRACTOR FOR EXACT LOCATION AND QUANTITY OF CIRCUITS.
- 4 APPROXIMATE LOCATION OF NEW PAD MOUNTED CSTE. COORDINATE EXACT LOCATION WITH MB HYDRO PREFERRED LOCATION PRIOR TO ROUGH-IN.
- 5 APPROXIMATE LOCATION OF EXISTING HYDRO TRANSFORMER.
- 6 APPROXIMATE LOCATION OF SUB LAN RACK. LAN RACK TO ME RF MOTE 83"x19" W STEEL RELAY RACK WITH TWO(2) VERTICAL CABLE MANAGERS WITH DOOR, SINGLE SIDED FIXED SHELF AND HORIZONTAL CABLE MANAGEMENT. E.C. TO COORDINATE WITH CITY OF WINNIPEG ON EXACT REQUIREMENTS PRIOR TO ORDERING. CITY OF WINNIPEG TO SUPPLY SWITCHES.
- 7 PROVIDE GFCI RECEPTACLE BELOW SINK FOR PLUG IN AUTO SOAP DISPENSER. CONFIRM EXACT REQUIREMENTS WITH MANUFACTURER PRIOR TO ROUGH-IN. WIRE AND CONNECT LOW VOLTAGE TRANSFORMER FOR AUTO FAUCET DEVICES. COORDINATE EXACT REQUIREMENTS WITH MANUFACTURER PRIOR TO ROUGH-IN.
- 8 PROVIDE FIBER LINK BETWEEN HEAD END LAN RACK IN ELEC/IT 118 AND SUB LAN RACK IN SECURE STORAGE 139B.
- 9 APPROXIMATE LOCATION OF MAIN LAN RACK. LAN RACK TO ME RF MOTE 83"x19" W STEEL RELAY RACK WITH TWO(2) VERTICAL CABLE MANAGERS WITH DOOR, SINGLE SIDED FIXED SHELF AND HORIZONTAL CABLE MANAGEMENT. E.C. TO COORDINATE WITH CITY OF WINNIPEG ON EXACT REQUIREMENTS PRIOR TO ORDERING. CITY OF WINNIPEG TO SUPPLY SWITCHES.
- 10 MILLWORK IS CONTRACT DELETE/SEPARATE PRICE. AS SUCH, VERIFY WITH G.C. PRIOR TO ROUGH-IN IF MILLWORK IS TO BE INSTALLED. IF NOT, MOUNT RECEPTACLES AT NORMAL FLOOR LEVEL HEIGHT.
- 11 COORDINATE WITH CITY OF WINNIPEG FINAL PLUG, DATA AND PHONE RECEPTACLES FOR COMPUTER, PINPAD (POS), PRINTER AND LANDLINE PHONE PRIOR TO ROUGH-IN.
- 12 POWER AND DATA LOCATIONS TO BE INSTALLED AROUND PERIMETER OF ROOM. E.C. TO VERIFY FINAL LOCATION WITH CITY OF WINNIPEG AND FUTURE DESK LOCATIONS PRIOR TO ROUGH-IN.
- 13 SEPARATE CIRCUIT EXTERIOR RECEPTACLE FOR WASAC BOUNCY CASTLE CONNECTION. E.C. TO COORDINATE WITH CITY OF WINNIPEG FOR EXACT LOCATION PRIOR TO ROUGH-IN.

- 14 WIRE AND CONNECT VRF BRANCH CIRCUIT CONTROLLER, INSTALLED BY MECHANICAL WIRE AND CONNECTED BY ELECTRICAL. CONFIRM EXACT REQUIREMENTS WITH MECHANICAL PRIOR TO ROUGH-IN. SIZE CIRCUIT BREAKER AND WIRE ACCORDINGLY.
- 15 WIRE AND CONNECT LOW VOLTAGE TRANSFORMER FOR AUTO FLUSH AND AUTO FAUCET DEVICES. COORDINATE EXACT REQUIREMENTS WITH MANUFACTURER PRIOR TO ROUGH-IN.
- 16 FORCE FLOW HEATER TO BE IN WHITE FINISH AT THIS LOCATION.
- 17 REFER TO ENLARGED PLAN 2/E4.1 FOR ELECTRICAL IN THIS AREA.
- 18 COORDINATE EXACT LOCATION OF SEVEN(7) PHONELINES WITH CITY OF WINNIPEG PRIOR TO ROUGH-IN.
- 19 REFER TO ENLARGED PLAN 3/E4.1 FOR ELECTRICAL IN THIS AREA.
- 20 WIRE AND CONNECT BOTTLE FILL STATIONS AND ALL RELATED CONTROLS. CONFIRM EXACT REQUIREMENTS WITH MANUFACTURER PRIOR TO ROUGH-IN.
- 21 COORDINATE EXACT DATA LOCATION WITH CITY OF WINNIPEG FOR FUTURE DESK LOCATION PRIOR TO ROUGH-IN.
- 22 PROVIDE AN EMERGENCY CALL SYSTEM FOR ACCESSIBLE RESTROOM AS REQUIRED BY MBC SECTION 3.8.3 AND THE PROVISION OF CSA B651-18 SECTION 6.3.1.2. SYSTEM TO BE CAMDEN CX-WC11 SYSTEM INCLUDING UTR DOOR OPERATOR, LOCK, CONTROLS AND ALARM SYSTEM. REFER TO ARCHITECTURAL DOOR HARDWARE SPECIFICATIONS FOR DETAILS. PROVIDE VISUAL/AUDIBLE ALARM OUTSIDE WASHROOM AS WELL AS IN WELCOME OFFICE 116.

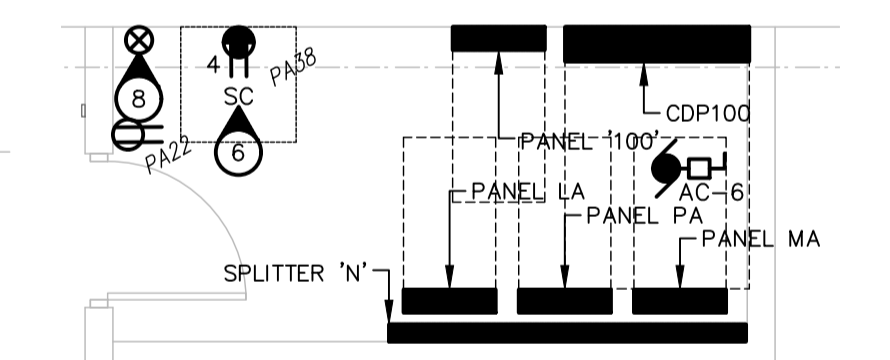
GENERAL ELECTRICAL NOTES

1. SUPPLY AND INSTALLATION OF AN FM ASSISTIVE LISTENING SYSTEM FOR THE FOLLOWING ROOMS 133/134 AND 136, TO BE BY CITY OF WINNIPEG.

2 ENLARGED ELEC/IT 118
E4.1 SCALE: 1:50



3 ENLARGED ELEC 139B
E4.1 SCALE: 1:50



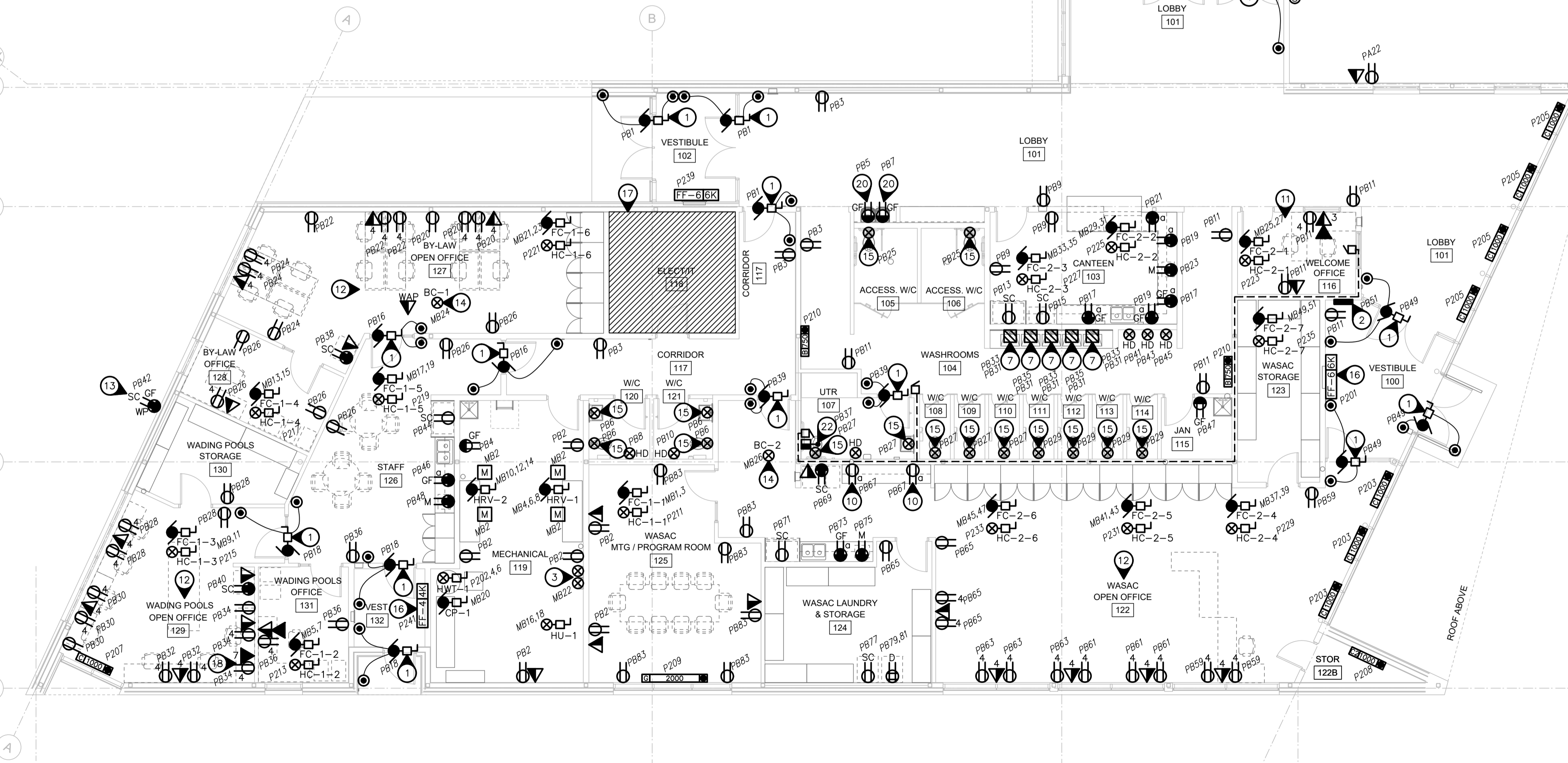
HEATING SCHEDULE - SOUTH AREA

TYPE	WATTS	VOLTAGE	DESCRIPTION	MANUFACTURER	CATALOGUE NO.	NOTES
B	750	347	BASEBOARD	OUELLET	ODB0757	3
C	1000	347	BASEBOARD	OUELLET	ODB1007-BD	1
C2	1000	347	BASEBOARD	OUELLET	OF1007	3
G	2000	347	BASEBOARD	OUELLET	ODB2007-BD	1
FF-4	4000	347	FORCE FLOW	OUELLET	OAWH4007-TAV	2,4
FF-6	6000	347	FORCE FLOW	OUELLET	OAWH6007-TAV	2,4

SPECIFIC HEATING NOTES:
 1. C/W BUILT-IN THERMOSTAT OR WIRED TO REMOTE THERMOSTAT AS SHOWN ON DRAWINGS. BASEBOARD TO BE C/W CLEAN BACK AND PEDESTAL MOUNTING KIT FOR MOUNTING IN FRONT OF FULL HEIGHT GLAZING. FINISH TO BE BLACK UNLESS OTHERWISE NOTED.
 2. C/W BUILT-IN THERMOSTAT UNLESS OTHERWISE INDICATED. RECESSED. FINISH TO BE BLACK UNLESS OTHERWISE NOTED.
 3. C/W BUILT-IN THERMOSTAT OR WIRED TO REMOTE THERMOSTAT AS SHOWN ON DRAWINGS. FINISH TO BE BLACK UNLESS OTHERWISE NOTED.
 4. REFER TO DRAWING NOTES FOR COLOR.

GENERAL HEATING NOTES:
 A. VOLTAGE TO BE AS INDICATED ABOVE UNLESS OTHERWISE NOTED ON DRAWINGS.
 B. HEATER SHALL BE FED FROM GFCI PROTECTED CIRCUIT IF INSTALLED WITHIN 1m OF A SINK, TUB, SHOWER (CEC 62-132). CONTROLS FOR HEATERS SHALL BE NO CLOSER THAN 500mm FROM SINK, TUB, SHOWER (CEC 62-130).

1 POWER LAYOUT - SOUTH AREA
E4.1 SCALE: 1:100



NOVA 3 ENGINEERING LTD. PROFESSIONAL ENGINEERS
 201-120 FORT STREET TEL: (204) 943-6142
 WINNIPEG, MANITOBA R3C 1C7 FAX: (204) 942-1276
 WWW.NOVA3.CA JN: 41-193
 THIS DRAWING IS THE EXCLUSIVE PROPERTY OF NOVA 3 ENGINEERING LTD. AND MAY ONLY BE REPRODUCED WITH THE WRITTEN PERMISSION OF NOVA 3 ENGINEERING LTD.
 THE CONCEPT AND DESIGN INCORPORATED INTO THIS DRAWING ARE BASED ON INFORMATION PROVIDED BY THE CLIENT AND OTHER RELATED SOURCES. PROFESSIONAL ENGINEER ACCEPTS NO RESPONSIBILITY FOR DRAWING AND DESIGN UNLESS DRAWING IS ACCOMPANIED BY ORIGINAL SEALED LETTER OF INTENT OR EQUIVALENT ACCEPTABLE FACSIMILE. PROFESSIONAL ENGINEER ACCEPTS NO RESPONSIBILITY FOR FINAL INSTALLATION CONFORMANCE WITHOUT ORIGINAL SEALED CERTIFICATE OF INSPECTION OR EQUIVALENT ACCEPTABLE FACSIMILE.

0	ISSUED FOR CONSTRUCTION	AM	2024.12.12
No.	REVISION/DESCRIPTION	BY	DATE



DRAWN	AM	CHECKED	DZ	DESIGNED	AM	APPROVED	AM
DATE	2024.12.12	USER	APPROVAL				

THE CITY OF WINNIPEG
 ASSETS AND PROJECT MANAGEMENT
 DEPARTMENT
 MUNICIPAL ACCOMMODATIONS DIVISION
 3-65 GARRY STREET, R3C 4K4

PROJECT
REDEVELOPMENT OF THE OLD EXHIBITION ARENA

80 SINCLAIR STREET
 SHEET TITLE

ELECTRICAL
POWER AND SYSTEMS LAYOUT - SOUTH

SCALE	PROJECT No:	SHEET No:
AS SHOWN	2020-136	E4.1