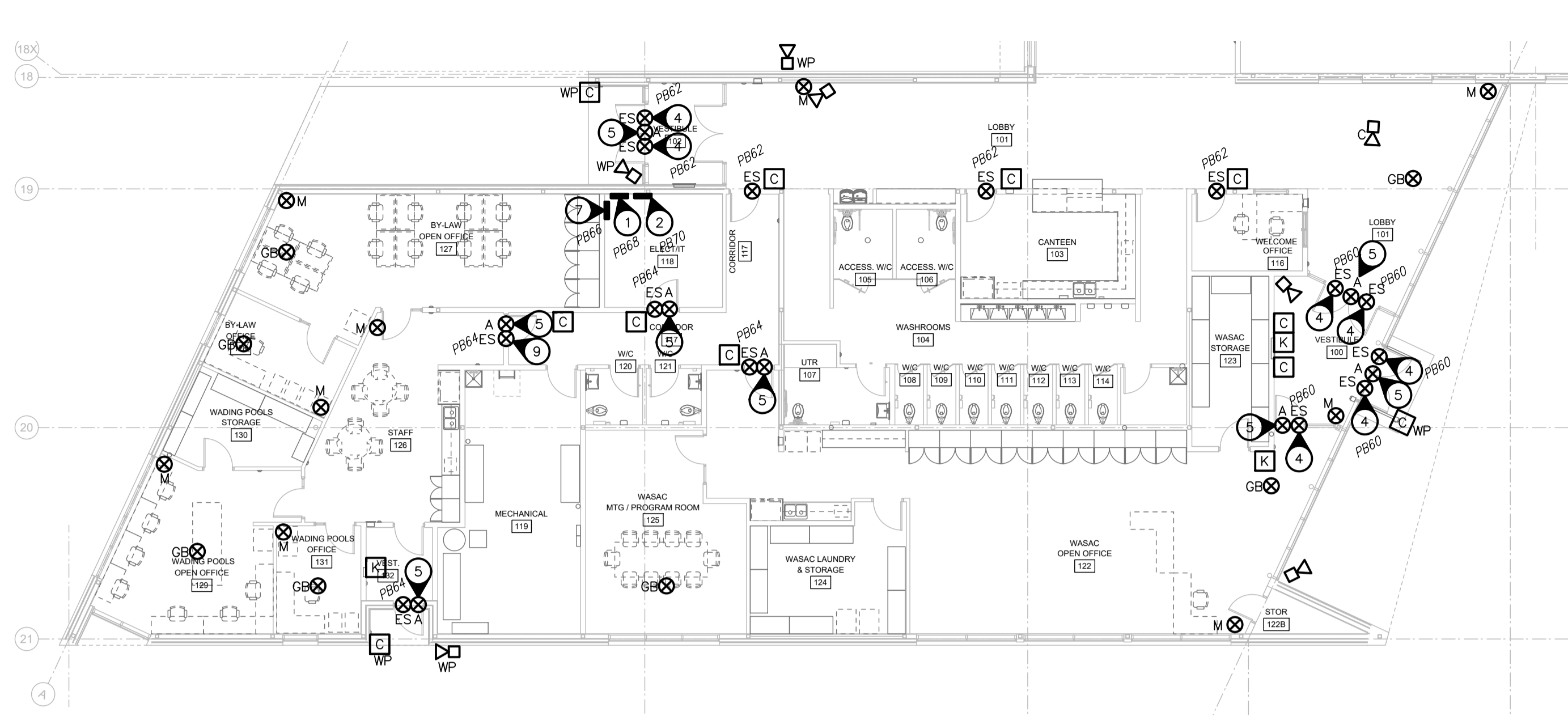


1 SECURITY SYSTEM LAYOUT - NORTH AREA
E6.0 SCALE: 1:150



2 SECURITY SYSTEM LAYOUT - SOUTH AREA
E6.0 SCALE: 1:150

SECURITY SYSTEM SYMBOL SCHEDULE

⊗	Junction box.
⊠	Security system keypad. Master keypad: Bosch B930 alpha-numeric keypad. Arming stations: Bosch B915 alpha-numeric keypad. Keypad enclosure to be STI-7510F.
⊞	Security system card access reader. HID Signo Multi Class Reader 40NK5-00-00000 / 20NK5-00-00000 (Slim).
⊞	Electric strike by others. Coordinate with door hardware supplier and wire and connect to security hardware.
⊞	Security system door contact.
⊞	Man doors: 1" sealed recessed unit. GRI 199-12W DPDT c/w STLDPMAG door channel magnet c/w GRI 6444-1 four state EOL resistor pack.
⊞	Overhead doors: GRI 4700-A c/w GRI 6444-1 four state EOL resistor pack.
⊞	Security system Dual Tech motion detector. Bosch ISC-CDL1-W15 c/w built-in end of line resistors.
⊞	Security system glass break detector supplied by City of Winnipeg, installed by E.C.
⊞	CCTV camera by City of Winnipeg.

Note: 'WP' indicates electrical device to be weather proof

GENERAL SECURITY/ACCESS SYSTEM NOTES

- E.C. TO SUPPLY AND INSTALL A FULLY FUNCTIONAL AND COMPLETE INTRUSION, ACCESS CONTROL AND NETWORK SURVEILLANCE SYSTEM.
E.C. TO MUTUALLY COORDINATE WITH CITY OF WINNIPEG IT/SECURITY REPRESENTATIVE AND ASSOCIATED INTRUSION, ACCESS CONTROL AND SURVEILLANCE STANDARDS 2024 (CONTRACTOR REFERENCE MANUAL) DOCUMENT FOR FULL SYSTEM SPECIFICATIONS AND INSTALLATION REQUIREMENTS.
- CONFIRM LOCATION AND REQUIREMENTS OF ACCESS CONTROL SYSTEM DEVICES WITH CITY OF WINNIPEG PRIOR TO ROUGH-IN.
- DEVICE WIRING TO BE 22/4 STRANDED OR 18/4 STRANDED (WIRE SIZE DETERMINED BY MANUFACTURER SPECIFICATIONS). POWER SUPPLY WIRING TO BE 18/4, 18/2 STRANDED, APPROVED MULTI-CONDUCTOR CABLE: HONEYWELL MULTI-CONDUCTOR PROFUSION 3195 FT6 RATED CABLE (OR EQUIVALENT). ALL CABLING TO BE COMPLETED WITH HOME-RUNS (NO SPLICES).

SECURITY (INTRUSION) SYSTEM NOTES

- INTRUSION CONTROL PANEL TO BE BOSCH B9512G C/W B8108 ENCLOSURE, D101 CABINET LOCK, ICP-EZTS DUAL TAMPER SWITCH AND D122 BATTERY HARNESS. CABINETS TO BE MOUNTED NO HIGHER THAN 5'10" A.F.F. MEASURED TO TOP OF CABINET. ENSURE CLEAR SPACE IS MAINTAINED IN FRONT OF CABINET TO ALLOW FOR ACCESS OR SERVICING.
- ZONE EXPANDERS TO BE BOSCH B208 8 INPUT EXPANSION MODULES, ENCLOSURE AND CABINET LOCK TO BE B8108 AND D101 RESPECTIVELY.
- ALL SECURITY SYSTEM WIRING IN OPEN CEILING TO BE IN CONDUIT. ALL WIRING IN DROP CEILING CAN BE RUN USING J-HOOKS.
- EMT MUST BE USED FOR ALL PANEL INTERCONNECTION, STUBS, CABLE PROTECTION AND CABLE PATHWAYS. ALL CONNECTORS AND FITTINGS MUST BE INSULATED OR HAVE THREADED PLASTIC BUSHINGS INSTALLED. ALL KNOCK-OUTS MUST BE FITTED WITH AN INSULATED BUSHING. ALL UNUSED KNOCK-OUTS MUST BE FILLED WITH APPROVED COVER.
- PANEL POWER SUPPLY TO BE 16.5V 75VA OR 40VA WIRE IN POWER SUPPLY. AUXILIARY INTRUSION DEVICE POWER SUPPLY TO BE BOSCH B520 2A 12V. APPROVED BATTERY TYPE: 12V 7AH YUASA SLA - NO SUBSTITUTIONS.
- REFER TO SECURITY PANEL RISER 2/E5.0 FOR MOUNTING REQUIREMENTS.

ACCESS CONTROL SYSTEM NOTES

- PROVIDE MERCURY LP1502 C/W MRS2 CONTROLLER TO CONTROL TWO(2) DOORS. CONTROL CABINETS C/W PRE-WIRED POWER SUPPLIES TO BE:
- ALTRONIX TROVE T3M77XK1D (ACCOMMODATES UP TO 8 CONTROLLERS - 16 DOORS)
CABINETS TO BE MOUNTED NO HIGHER THAN 5'10" A.F.F. MEASURED TO TOP OF CABINET. ENSURE CLEAR SPACE IS MAINTAINED IN FRONT OF CABINET TO ALLOW FOR ACCESS OR SERVICING.
- REFER TO ACCESS CONTROL PANEL RISER 3/E5.0 FOR MOUNTING REQUIREMENTS.

NETWORK SURVEILLANCE SYSTEM NOTES

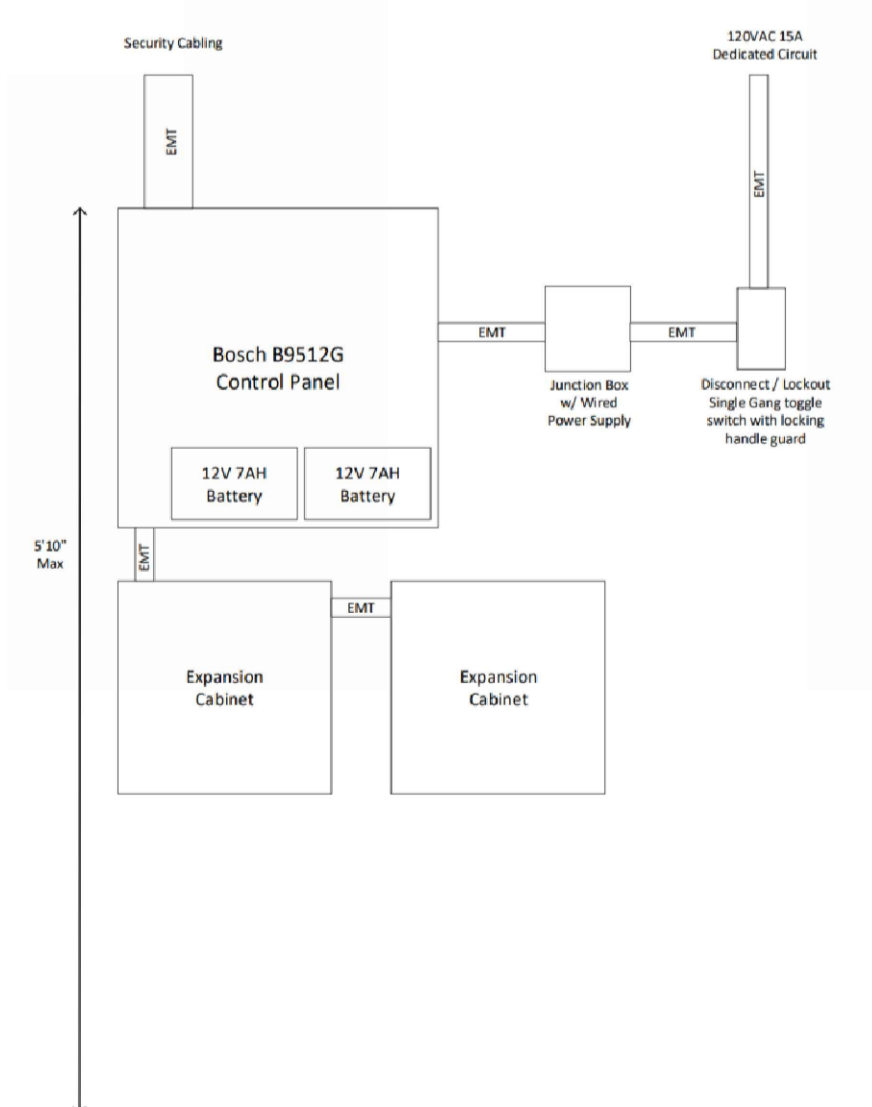
- NETWORK VIDEO RECORDER(NVR) BY OWNER.
- NETWORK WALL CABINET/ENCLOSURE TO BE 6U HAMMOND HLP6U31BK OR HLP6U43BK(DEEP).
- CABLING TO BE CAT6 FT6 RATED CABLING. TERMINATIONS MUST BE TIA/EIA-568-B AND TERMINATED TO CAT6 PATCH PANELS C/W KEYSTONE JACKS, TERMINAL BOXES, AND INTERCONNECTED WITH CAT6 PATCH CABLES TO DEVICES.
- CAMERA TERMINATION MUST BE MADE IN HANWHA BACK BOXES, JUNCTION BOXES, AND MUST BE ACCESSIBLE FOR SERVICING EQUIPMENT.
- ALL CABLING AND TERMINATIONS MUST BE TESTED AND VERIFIED C/W DOCUMENTED TEST RESULTS.
- CITY OF WINNIPEG TO SUPPLY AND INSTALL SURVEILLANCE CAMERAS, NVR, STORAGE DRIVES, VIDEO ENCODER (IF REQUIRED) AND DISPLAY MONITORING.

SPECIFIC ELECTRICAL NOTES

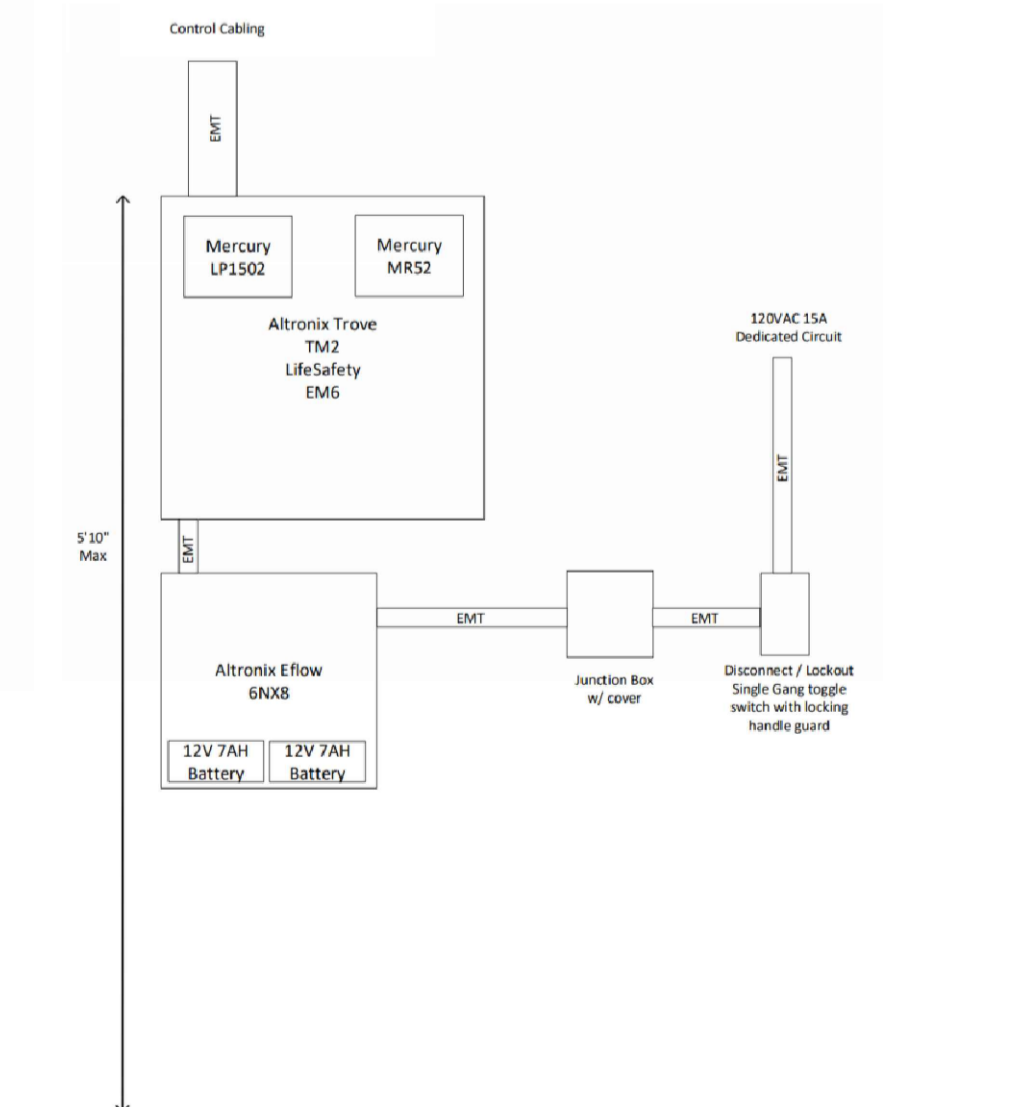
- APPROXIMATE LOCATION OF SECURITY(INTRUSION) SYSTEM CONTROL PANEL (BOSCH 9512G). COORDINATE EXACT LOCATION WITH CITY OF WINNIPEG PRIOR TO ROUGH-IN.
- APPROXIMATE LOCATION OF PREWIRED MAIN ACCESS CONTROL PANEL C/W POWER SUPPLY (ALTRONIX TROVE T3M77XK1D). COORDINATE EXACT LOCATION WITH CITY OF WINNIPEG PRIOR TO ROUGH-IN.
- APPROXIMATE LOCATION OF PREWIRED SUB ACCESS CONTROL PANEL C/W POWER SUPPLY (ALTRONIX TROVE T2M7XK1D). COORDINATE EXACT LOCATION WITH CITY OF WINNIPEG PRIOR TO ROUGH-IN.
- RUN 3/4" EMT DOWN THE INSIDE ON LOCK SIDE OF DOOR FRAME (FOR DOOR CONTACT) AND BACK TO ELECTRICAL/IT 118.
- RUN 3/4" EMT DOWN THE INSIDE OF DOOR FRAME (FOR DOOR CONTACT) AND BACK TO ELECTRICAL/IT 118.
- RUN 3/4" EMT DOWN THE INSIDE OF DOOR FRAME (FOR DOOR CONTACT) AND BACK TO ELEC 139B.
- APPROXIMATE LOCATION OF VIDEO RECORDER CABINET (6U HAMMOND HLP6U43BK). COORDINATE EXACT LOCATION WITH CITY OF WINNIPEG PRIOR TO ROUGH-IN.
- PROVIDE A REMOTE ELECTRONIC RELEASE BUTTON TO OPEN WASH BAY MAN DOOR.
- ELECTRIC STRIKE IS TO BE CONFIGURED TO FAIL-SAFE ON LOSS OF POWER. LOSS OF POWER IS TO INCLUDE BUILDING POWER FAILURE AND/OR FIRE ALARM CONDITION. (DOOR IS TO BE UNLOCKED UPON ANY EMERGENCY CONDITION)
- PROVIDE DOOR RELEASE BUTTON IN LOCATION INDICATED, OR AS DIRECTED BY CITY OF WINNIPEG, TO RELEASE DOOR D154B.

GENERAL ELECTRICAL NOTES - WADS REQUIREMENTS

- FOR CARD ACCESS READERS/KEYPADS LOCATED ON HINGE SIDE OF DOOR IT CONTROLS, CONTROLS ARE TO BE LOCATED A MINIMUM 600mm BEYOND THE DOOR SWING, WHERE THE DOOR OPENS TOWARDS THE CONTROL.
- CARD READER/KEYPADS ARE TO BE WALL MOUNTED 800mm-900mm A.F.F.



2 SECURITY PANEL RISER
E6.0 SCALE: NTS



3 ACCESS CONTROL PANEL RISER
E6.0 SCALE: NTS

NOVA 3 ENGINEERING LTD. PROFESSIONAL ENGINEERS
201-120 FORT STREET TEL: (204) 943-6142
WINNIPEG, MANITOBA R3C 1C7 FAX: (204) 942-1276
WWW.NOVA3.CA JN: 41-193

THIS DRAWING IS THE EXCLUSIVE PROPERTY OF NOVA 3 ENGINEERING LTD. AND MAY ONLY BE REPRODUCED WITH THE WRITTEN PERMISSION OF NOVA 3 ENGINEERING LTD.

THE CONCEPT AND DESIGN INCORPORATED INTO THIS DRAWING ARE BASED ON INFORMATION PROVIDED BY THE CLIENT AND OTHER RELATED SOURCES. PROFESSIONAL ENGINEER ACCEPTS NO RESPONSIBILITY FOR DRAWING AND DESIGN UNLESS DRAWING IS ACCOMPANIED BY ORIGINAL SEALED LETTER OF INTENT OR EQUIVALENT ACCEPTABLE FACSIMILE. PROFESSIONAL ENGINEER ACCEPTS NO RESPONSIBILITY FOR FINAL INSTALLATION CONFORMANCE WITHOUT ORIGINAL SEALED CERTIFICATE OF INSPECTION OR EQUIVALENT ACCEPTABLE FACSIMILE.

0	ISSUED FOR CONSTRUCTION	AM	2024.12.12
No.	REVISION/DESCRIPTION	BY	DATE

SEAL

DRAWN	AM	CHECKED	DZ	DESIGNED	AM	APPROVED	AM
DATE	2024.12.12	USER	APPROVAL				

THE CITY OF WINNIPEG
ASSETS and PROJECT MANAGEMENT
DEPARTMENT
MUNICIPAL ACCOMMODATIONS DIVISION
3-65 GARRY STREET, R3C 4K4

PROJECT
REDEVELOPMENT OF THE OLD EXHIBITION ARENA

80 SINCLAIR STREET
SHEET TITLE



SCALE	PROJECT No:	SHEET No:
AS SHOWN	2020-136	E6.0

DRAWING SHEET SIZE: A1 (841mm x 594mm) PLOT 1:1