

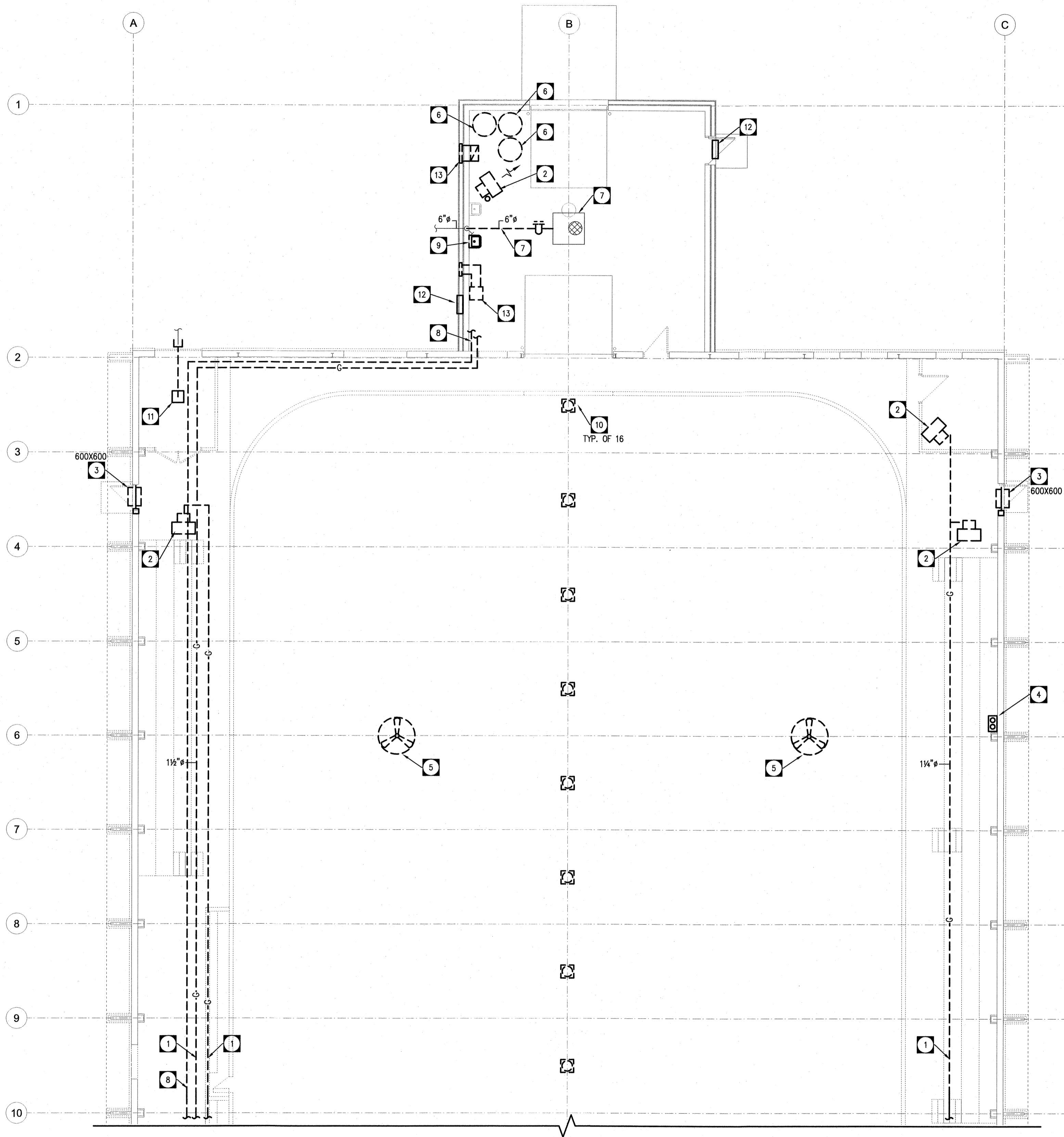
NOTES:

FILE NAME:

DATE:

SHEET TITLE:

ADDRESS:



**DEMOLITION PLAN (NORTH)**  
SCALE: 1:100

**DRAWING NOTES**

- 1 APPROXIMATE LOCATION OF EXISTING NATURAL GAS PIPING, ASSOCIATED HANGERS, VENTS, ETC., TO BE REMOVED.
- 2 EXISTING GAS FIRED UNIT HEATERS AND VENTING TO BE REMOVED. COORDINATE PATCH/REPAIR OF ROOF PENETRATIONS WITH GC.
- 3 EXISTING SIDEWALL TRANSFER DUCT, FANS, AND ALL ASSOCIATED CONTROLS, TO BE REMOVED. COORDINATE PATCH/REPAIR WITH GC WHERE OPENINGS NOT SCHEDULED FOR USE.
- 4 CARBON MONOXIDE DETECTOR TO BE REMOVED, INCLUDING POWER/CONTROL WIRING. TURN OVER TO CITY OF WINNIPEG. UPON REQUEST, DISPOSE OF TO MUNICIPAL REQUIREMENTS.
- 5 CEILING FANS AND POWER/CONTROL WIRING TO BE REMOVED. COORDINATE WITH ELECTRICAL CONTRACTOR FOR DISCONNECT.
- 6 EXISTING DOMESTIC HOT WATER HEATER, VENTING AND STORAGE TANKS TO BE REMOVED.
- 7 EXISTING CATCH BASIN IN NEW WASHBAY AREA; CONTRACTOR TO DRAIN, CLEAN, AND INSPECT INTEGRITY OF CATCH BASIN, AND TELEWISE 6" SANITARY THRU TO EXISTING MANHOLE AT BUILDING EXTERIOR. VERIFY ALL INVERTS PRIOR TO DEMOLITION. REPORT FINDINGS TO CITY OF WINNIPEG REPRESENTATIVE AND CONSULTANT. REMOVE SECTION OF SANITARY PIPING WITHIN WASHBAY TO ACCOMMODATE INSTALLATION OF NEW OIL INTERCEPTOR AND INTERCONNECTION WITH ASSOCIATED INLET/OUTLET SANITARY CONNECTIONS.
- 8 EXISTING DOMESTIC COLD WATER PIPING AND INSULATION TO BE REMOVED.
- 9 REMOVE EXISTING PLUMBING FIXTURES, HOSE BIBBS, LAUNDRY TUB/FAUCET AND PIPING. REFER TO RENOVATION PLAN FOR NEW SINK REQUIREMENT, CONNECT TO EXISTING DWV PENETRATION THRU ROOF FOR PLUMBING VENT TO BE REUSED WHERE POSSIBLE; MODIFY/EXTEND PENETRATION AS REQUIRED.
- 10 APPROXIMATE LOCATION OF EXISTING PASSIVE ROOF VENTS TO BE REMOVED, COORDINATE WITH GC FOR PATCH/REPAIR OF ROOF PENETRATIONS.
- 11 APPROXIMATE LOCATION OF EXISTING SUMP PIT AND DRAIN; CONTRACTOR TO TELEWISE EXISTING DRAIN LINE TO DETERMINE OUTFLOW LOCATION, AND REPORT FINDINGS TO CITY OF WINNIPEG REPRESENTATIVE AND CONSULTANT. ALLOW TO CAP PIPING AT OUTFLOW/NEAREST ACTIVE MAIN (TO CITY OF WINNIPEG STANDARDS), CAP PIPING AT EXTERIOR OF BUILDING AND ABANDON IN PLACE, REMOVE SECTION OF PIPING EXTENDING INTO BUILDING AND COORDINATE WITH GENERAL CONTRACTOR FOR INFILL OF PIT AND REMAINING PIPE PENETRATION TO BUILDING LINE.
- 12 EXISTING ATTIC VENT LOUVER TO REMAIN.
- 13 EXISTING WASHBAY COMBUSTION AIR INLET DUCT, AND EXHAUST FAN/WALL HOOD TO BE REMOVED. COORDINATE PATCH/REPAIR WITH GC.



0	ISSUED FOR CONSTRUCTION	JSD	2024.12.11
No.	REVISION/DESCRIPTION	BY	DATE



CT/JSD	JSD	JSD	JSD
DRAWN	CHECKED	DESIGNED	APPROVED
DAZE04.20	USER	TC	

THE CITY OF WINNIPEG  
ASSETS and PROJECT MANAGEMENT  
DEPARTMENT  
MUNICIPAL ACCOMMODATIONS  
DIVISION

PROJECT  
3-65 GARRY STREET, R3C 4K4  
**REDEVELOPMENT OF THE  
OLD EXHIBITION ARENA  
ISSUED FOR CONSTRUCTION**

80 SINCLAIR STREET  
SHEET TITLE

**DEMOLITION PLAN -  
NORTH ARENA**

**NOVA 3 ENGINEERING LTD.**  
PROFESSIONAL ENGINEERS  
201-120 FORT STREET TEL: (204) 943-6142  
WINNIPEG, MANITOBA R3C 1C7 FAX: (204) 942-1276  
WWW.NOVA3.CA JN: 41-193  
THIS DRAWING IS THE EXCLUSIVE PROPERTY OF NOVA 3 ENGINEERING LTD.  
AND MAY ONLY BE REPRODUCED WITH THE WRITTEN PERMISSION OF NOVA 3  
ENGINEERING LTD.  
THE CONCEPT AND DESIGN INCORPORATED INTO THIS DRAWING ARE BASED  
ON INFORMATION PROVIDED BY THE CLIENT AND OTHER RELATED SOURCES.  
PROFESSIONAL ENGINEER ACCEPTS NO RESPONSIBILITY FOR DRAWING AND  
DESIGN UNLESS DRAWING IS ACCOMPANIED BY ORIGINAL SEALED LETTER OF  
INTENT OR EQUIVALENT ACCEPTABLE FACSIMILE. PROFESSIONAL ENGINEER  
ACCEPTS NO RESPONSIBILITY FOR FINAL INSTALLATION CONFORMANCE  
WITHOUT ORIGINAL SEALED CERTIFICATE OF INSPECTION OR EQUIVALENT  
ACCEPTABLE FACSIMILE.

SCALE	PROJECT No:	SHEET No:
AS SHOWN	2020-136	M1.0

DRAWING SHEET SIZE: A1 (841mm x 594mm) PLOT 1:1