

FILE NAME:

DATE:

SHEET TITLE:

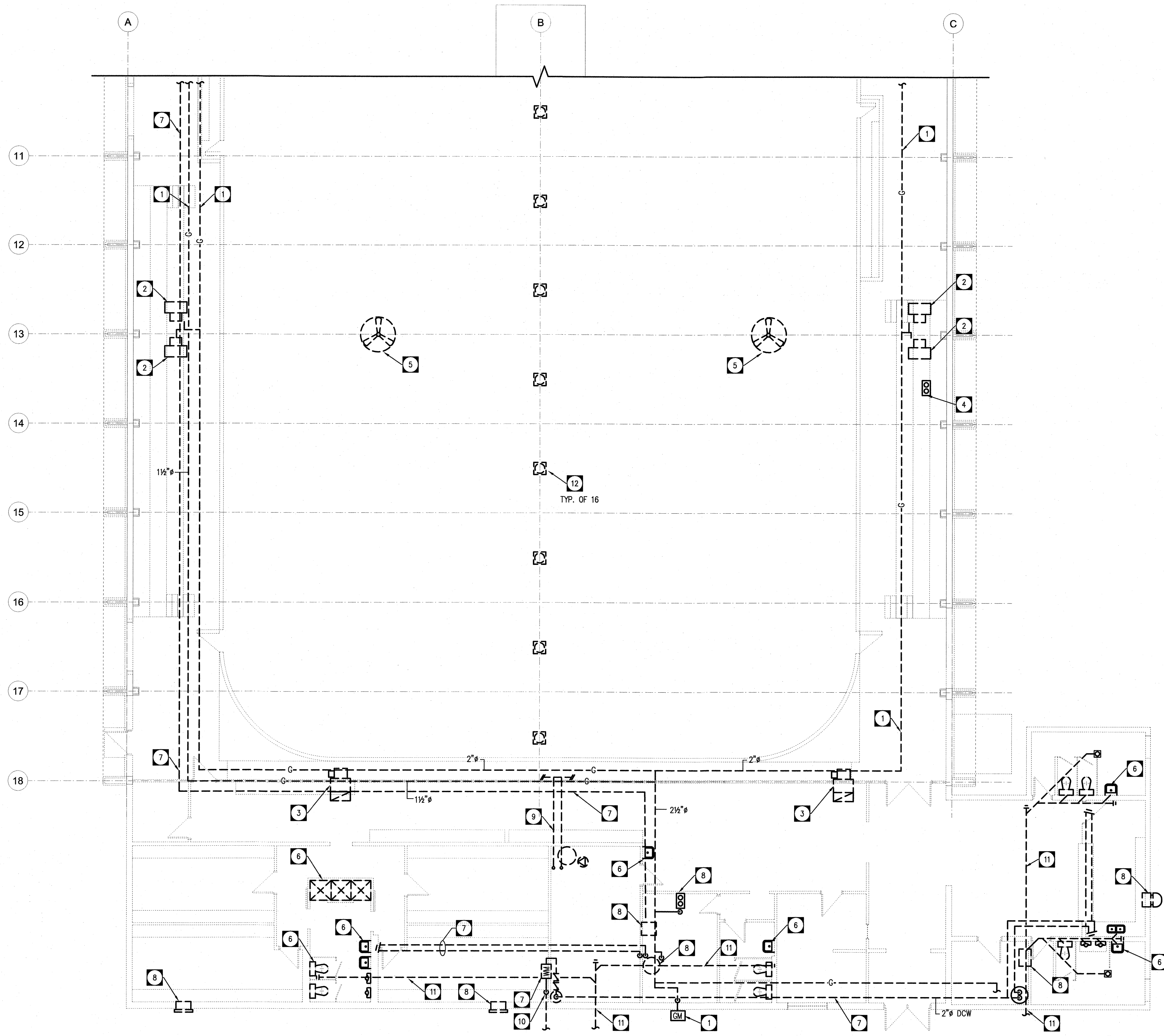
PROJECT No.:

ADDRESS:

NOTES:

**DRAWING NOTES**

- 1 APPROXIMATE LOCATION OF EXISTING NATURAL GAS METER ASSEMBLY, PIPING, HANGERS, AND VENTING TO BE REMOVED. ALL NEW BUILDING EQUIPMENT TO BE ELECTRIC ONLY. COORDINATE WITH UTILITY FOR DISCONNECT AND REMOVAL OF NATURAL GAS SERVICE FROM BUILDING, CAP OFF AND REMOVE. ABANDONED PIPING TO THE REQUIREMENTS MANITOBA HYDRO.
- 2 EXISTING GAS FIRED UNIT HEATERS AND VENTING TO BE REMOVED. COORDINATE PATCH/REPAIR OF ROOF OPENINGS WITH GENERAL CONTRACTOR.
- 3 SIDEWALL EXHAUST FANS AND DUCTWORK TO BE REMOVED. COORDINATE PATCH/REPAIR OF WALL/ROOF PENETRATIONS WITH GC.
- 4 CARBON MONOXIDE DETECTOR TO BE REMOVED, INCLUDING POWER/CONTROL WIRING. TURN OVER TO CITY OF WINNIPEG. UPON REQUEST, DISPOSE OF TO MUNICIPAL REQUIREMENTS.
- 5 CEILING FANS AND POWER/CONTROL WIRING TO BE REMOVED. COORDINATE WITH ELECTRICAL FOR DISCONNECT.
- 6 REMOVE ALL PLUMBING FIXTURES, ASSOCIATED DOMESTIC WATER PIPING, SANITARY DWV.
- 7 EXISTING DOMESTIC WATER METER AND BACKFLOW PREVENTION DEVICE TO BE REMOVED. REMOVE ALL DOMESTIC WATER PIPING IN AREA OF DEMOLITION.
- 8 REMOVE EXISTING HVAC FANS, DAMPERS, FURNACES, DOMESTIC HOT WATER TANKS, ETC. AND COORDINATE DISCONNECT W/ELECTRICAL
- 9 EXISTING UNDERSLAB ICE-PLANT PIPING TO BE REMOVED TO GRID 18, CAP AND ABANDON IN PLACE.
- 10 APPROXIMATE LOCATION OF EXISTING WATER MAINS; COORDINATE W/OUTSIDE SERVICES CONTRACTOR TO REMOVE, AND CAP/ABANDON AT MUNICIPAL CONNECTION TO CITY OF WINNIPEG STANDARDS. REFER TO CIVIL DRAWINGS FOR OUTSIDE SERVICE REQUIREMENTS.
- 11 APPROXIMATE LOCATION OF EXISTING SANITARY MAIN; REMOVE ALL UNDERGROUND PIPING WITHIN BUILDING AREA SCHEDULED FOR DEMOLITION. REFER TO CIVIL DRAWINGS FOR OUTSIDE SERVICE REQUIREMENTS.
- 12 APPROXIMATE LOCATION OF EXISTING PASSIVE ROOF VENTS TO BE REMOVED, COORDINATE WITH GC FOR PATCH/REPAIR OF ROOF PENETRATIONS.



**DEMOLITION PLAN (SOUTH)**  
SCALE: 1:100



0	ISSUED FOR CONSTRUCTION	JSD	2024.12.11
No.	REVISION/DESCRIPTION	BY	DATE



CT/JSD	JSD	JSD	JSD
DRAWN	CHECKED	DESIGNED	APPROVED
DAZE04.20	USER	TC	

THE CITY OF WINNIPEG  
**ASSETS and PROJECT MANAGEMENT**  
 DEPARTMENT  
 MUNICIPAL ACCOMMODATIONS  
 DIVISION  
 PROJECT 3-65 GARRY STREET, R3C 4K4  
**REDEVELOPMENT OF THE  
 OLD EXHIBITION ARENA  
 ISSUED FOR CONSTRUCTION**  
 80 SINCLAIR STREET  
 SHEET TITLE

**NOVA 3** NOVA 3 ENGINEERING LTD.  
 PROFESSIONAL ENGINEERS  
 201-120 FORT STREET TEL: (204) 943-6142  
 WINNIPEG, MANITOBA R3C 1C7 FAX: (204) 942-1276  
 WWW.NOVA3.CA JN: 41-193  
 THIS DRAWING IS THE EXCLUSIVE PROPERTY OF NOVA 3 ENGINEERING LTD.  
 AND MAY ONLY BE REPRODUCED WITH THE WRITTEN PERMISSION OF NOVA 3  
 ENGINEERING LTD.  
 THE CONCEPT AND DESIGN INCORPORATED INTO THIS DRAWING ARE BASED  
 ON INFORMATION PROVIDED BY THE CLIENT AND OTHER RELATED SOURCES.  
 PROFESSIONAL ENGINEER ACCEPTS NO RESPONSIBILITY FOR DRAWING AND  
 DESIGN UNLESS DRAWING IS ACCOMPANIED BY ORIGINAL SEALED LETTER OF  
 INTENT OR EQUIVALENT ACCEPTABLE FACSIMILE. PROFESSIONAL ENGINEER  
 ACCEPTS NO RESPONSIBILITY FOR FINAL INSTALLATION CONFORMANCE  
 WITHOUT ORIGINAL SEALED CERTIFICATE OF INSPECTION OR EQUIVALENT  
 ACCEPTABLE FACSIMILE.

**DEMOLITION PLAN -  
SOUTH ARENA**

SCALE	PROJECT No.	SHEET No.
AS SHOWN	2020-136	M1.1

DRAWING SHEET SIZE: A1 (841mm x 594mm) PLOT 1:1