

FILE NAME:

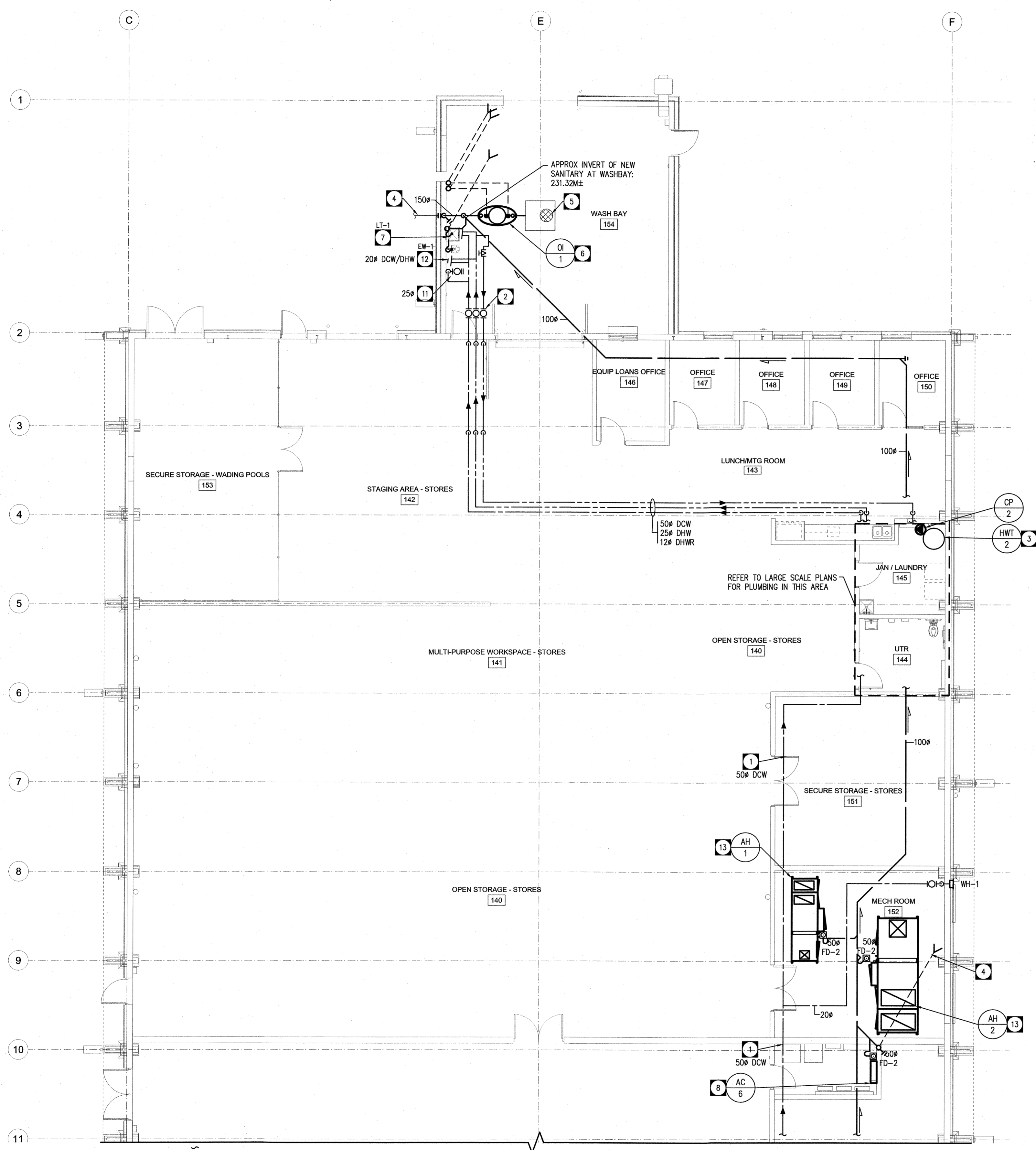
DATE:

SHEET TITLE:

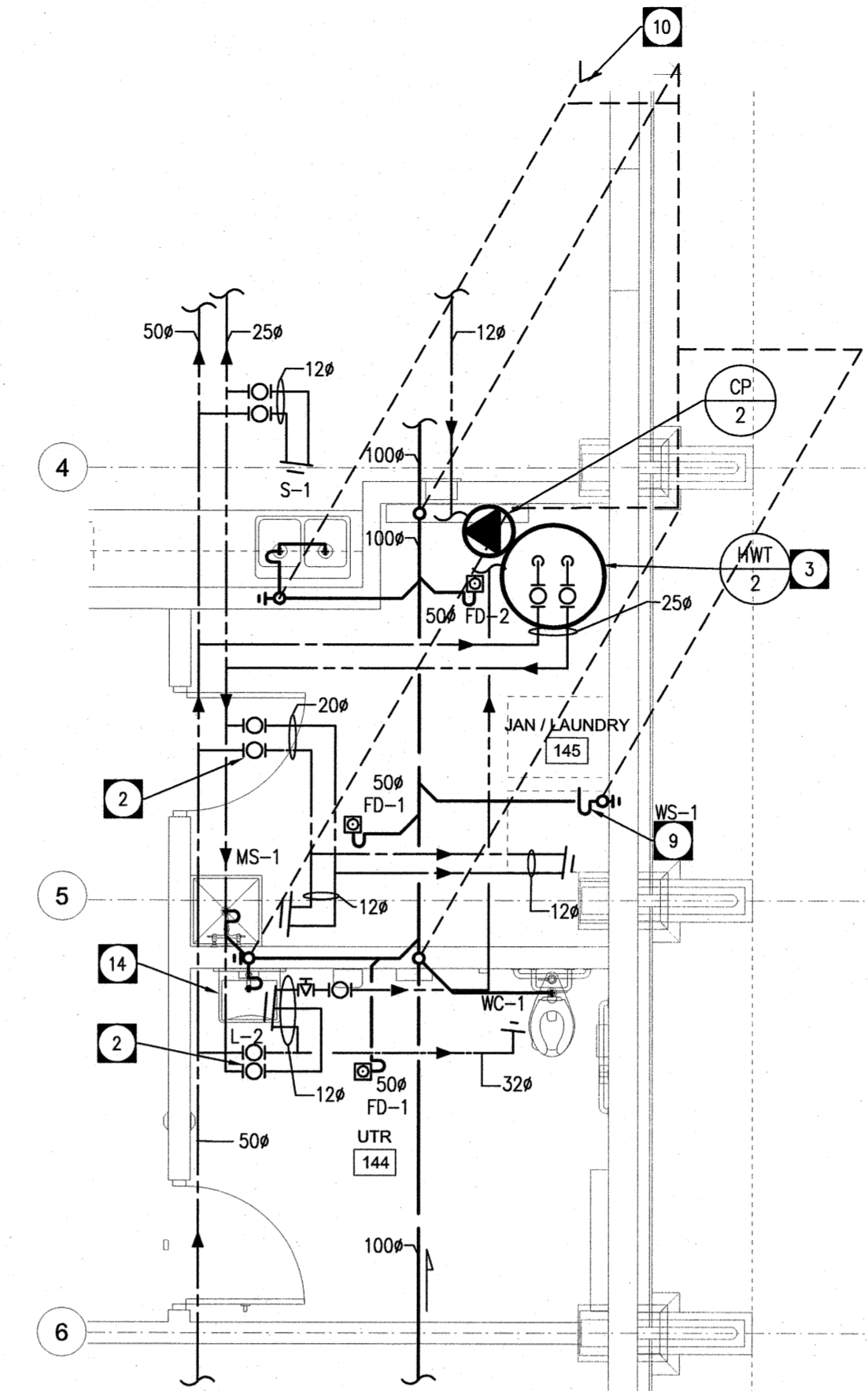
PROJECT No.:

ADDRESS:

NOTES:



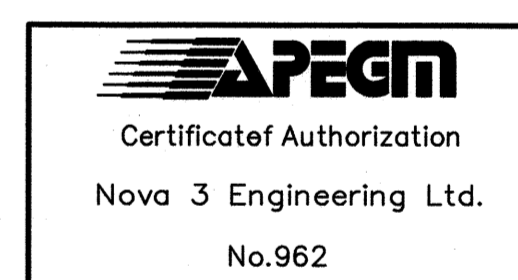
RENOVATION PLAN - PLUMBING (NORTH)
SCALE: 1:100



PARTIAL PLAN - PLUMBING (NORTH)
SCALE: 1:100

DRAWING NOTES

- 1 DOMESTIC WATER PIPING OFFSET AT U/S OF STRUCTURE FROM NEW WATER METER ASSEMBLY.
- 2 PROVIDE ISOLATION VALVES AT EACH WASHROOM/FIXTURE GROUP. ROUTE DOMESTIC WATER PIPING DOWN IN WALL (SURFACE MOUNT WHERE WALL IS CONCRETE) TO RESPECTIVE PLUMBING FIXTURES.
- 3 PAD MOUNT ELECTRIC HOT WATER HEATER; REFER TO SCHEMATIC.
- 4 EXISTING SANITARY SERVICE LEAVING WASH BAY AREA TO REMAIN, MODIFY/EXTEND AS REQUIRED TO ACCOMMODATE INTERCONNECTION WITH NEW OIL INTERCEPTOR AND SANITARY DRAINAGE PIPING.
- 5 EXISTING CONCRETE CATCH BASIN TO REMAIN.
- 6 NEW OIL INTERCEPTOR; MODIFY/EXTEND SANITARY FROM EXISTING CATCH BASIN AS REQUIRED TO ACCOMMODATE THE INSTALLATION. CONFIRM EXISTING DRAIN/CATCH BASIN INVERT CONNECTIONS, PROVIDE EXTENSION COLLAR ON OIL INTERCEPTOR AS REQUIRED TO MEET EXISTING INVERT. OFFSET INDIVIDUAL SANITARY VENTS FROM OIL INTERCEPTOR TO ADJACENT WALL AND EXTEND THRU TO ROOF C/W INCREASER.
- 7 NEW FLOOR MOUNT LAUNDRY TUB/FAUCET, EXTEND SURFACE MOUNT WATER SUPPLIES SUPPORTED WITH WALL BRACKETS/PIPE CLAMPS AS SPECIFIED. PROVIDE NEW SANITARY VENT, UTILIZE EXISTING ROOF PENETRATION, MODIFY/EXTEND PENETRATION AS REQUIRED.
- 8 ROUTE INSULATED CONDENSATE DRAIN PIPING FROM WALL MOUNT AC UNIT TO ADJACENT FLOOR DRAIN.
- 9 PROVIDE 50# DIA. X 600MM HIGH STANDPIPE DRAIN FOR LAUNDRY WASHER.
- 10 EXTEND INSULATED SANITARY VENT UP THRU ROOF C/W INCREASER AT ROOF PENETRATION.
- 11 25# DCW DOWN AT WALL TO HOSE BIBB VALVE, FOR CONNECTION OF PRESSURE WASHER (PROVIDED BY CITY OF WINNIPEG); COORDINATE FINAL REQUIREMENTS ACCORDINGLY, PROVIDE ISOLATION AND BACKFLOW PREVENTION DEVICE AS REQUIRED.
- 12 DCW/DHW DOWN TO WALL MOUNT THERMOSTATIC MIXING VALVE, EXTEND TEMPERED WATER SUPPLY TO EYEWASH STATION, EXTEND DRAIN TO ADJACENT LT-1 DWV ABOVE FLOOR LEVEL.
- 13 EXTEND CONDENSATE FROM AH-1/2 TO RESPECTIVE FUNNEL FLOOR DRAIN.
- 14 WHERE SENSOR OPERATED LAVATORIES ARE USED, EXTEND DHWR UP WITHIN WALL FROM DHW SUPPLY AT LAVATORY CONNECTION, REFER TO DETAIL.



0	ISSUED FOR CONSTRUCTION	JSD	2024.12.11
No.	REVISION/DESCRIPTION	BY	DATE

SEAL



CT/USD	JSD	JSD	JSD
DRAWN	CHECKED	DESIGNED	APPROVED
DATE: 04.20	USER	TC	APPROVAL

THE CITY OF WINNIPEG
ASSETS and PROJECT MANAGEMENT
DEPARTMENT
MUNICIPAL ACCOMMODATIONS
DIVISION
PROJECT 3-65 GARRY STREET, R3C 4K4
**REDEVELOPMENT OF THE
OLD EXHIBITION ARENA
ISSUED FOR CONSTRUCTION**
80 SINCLAIR STREET
SHEET TITLE

**RENOVATION PLAN - PLUMBING
(NORTH ARENA)**

NOVA 3 ENGINEERING LTD.
PROFESSIONAL ENGINEERS
201-120 FORT STREET TEL.: (204) 943-6142
WINNIPEG, MANITOBA R3C 1C7 FAX.: (204) 942-1276
WWW.NOVA3.CA JN.: 41-193
THIS DRAWING IS THE EXCLUSIVE PROPERTY OF NOVA 3 ENGINEERING LTD. AND MAY ONLY BE REPRODUCED WITH THE WRITTEN PERMISSION OF NOVA 3 ENGINEERING LTD.

THE CONCEPT AND DESIGN INCORPORATED INTO THIS DRAWING ARE BASED ON INFORMATION PROVIDED BY THE CLIENT AND OTHER RELATED SOURCES. PROFESSIONAL ENGINEER ACCEPTS NO RESPONSIBILITY FOR DRAWING AND DESIGN UNLESS DRAWING IS ACCOMPANIED BY ORIGINAL SEALED LETTER OF INTENT OR EQUIVALENT ACCEPTABLE FACSIMILE. PROFESSIONAL ENGINEER ACCEPTS NO RESPONSIBILITY FOR FINAL INSTALLATION CONFORMANCE WITHOUT ORIGINAL SEALED CERTIFICATE OF INSPECTION OR EQUIVALENT ACCEPTABLE FACSIMILE.

SCALE	PROJECT No.	SHEET No.
AS SHOWN	2020-136	M2.0

DRAWING SHEET SIZE: A1 (841mm x 594mm) PLOT 1:1