

NOTES:

DRAWING NOTES

- 1 ELECTRIC MAKEUP AIR UNIT ON INSULATED 600MM HIGH FULL PERIMETER CURB. OFFSET INSULATED DUCT UP AT EXTERIOR AND INTO WASHBAY AT U/S OF CEILING C/W MOTORIZED DAMPER AT ENVELOPE. OFFSET DUCT AT HIGH LEVEL.
- 2 DUCT MOUNT SUPPLY GRILLES MOUNTED TO DISCHARGE 45° DOWNWARD FROM HORIZONTAL.
- 3 SIDEWALL EXHAUST FAN AT HIGH LEVEL, PROVIDE MOTORIZED DAMPER AT ENVELOPE PENETRATION.
- 4 EXHAUST DUCT DOWN TO LOW LEVEL (300MM AFF), GRILLES W/INTEGRAL DAMPERS AT 400MM AFF, AND 2400MM AFF.
- 5 ELECTRIC UNIT HEATER PROVIDED/INSTALLED BY ELECTRICAL CONTRACTOR.
- 6 WASHBAY HUMIDITY AND GAS DETECTION (CO/NO2) SYSTEM; REFER TO SEQUENCE OF OPERATIONS.
- 7 CEILING EXHAUST FAN; EXTEND INSULATED EXHAUST TO EXTERIOR STEEL HOODED WALL CAP WITH BIRDSCREEN AND BACKDRAFT DAMPER. PRIME COAT AND PAINT HOOD TO MATCH ADJACENT SIDING COLOUR.
- 8 SIDEWALL RETURN GRILLE; PROVIDE ACOUSTIC LINED TRANSFER DUCT W/UPTURN ELBOW IN OFFICE CEILING SPACE.
- 9 PAD MOUNT AIR HANDLING UNIT IN MECH ROOM; ROUTE INSULATED O/A DUCT FROM EXTERIOR LOUVER VIA MOTORIZED DAMPER TO INLET CONNECTION; ROUTE ACOUSTIC LINED R/A DUCT FROM SIDEWALL RETURN GRILLE TO UNIT CONNECTION; ROUTE INSULATED S/A DUCT AT HIGH LEVEL TO SUPPLY AIR GRILLE/DIFFUSERS. EXTEND INSULATED/ALUMINUM JACKETED REFRIGERANT PIPING TO PAD MOUNT CONDENSING UNIT ON GRADE. ALL EXTERIOR PIPING TO BE SUPPORTED WITH C-PORT (CE SERIES OR EQUAL) PIPE SYSTEM SUPPORTS. ROUTE CONDENSATE DRAIN TO ADJACENT FLOOR DRAIN.
- 10 SUPPLY GRILLE MOUNTED ON DUCT TO DISCHARGE DOWNWARD FROM HORIZONTAL AT NOTED ANGLE.
- 11 ROUTE INSULATED RIGID LAUNDRY DRYER EXHAUST DUCT THRU TO EXTERIOR WALL TO STEEL HOODED WALL CAP W/BACKDRAFT FLAP. PRIME COAT AND PAINT HOOD TO MATCH ADJACENT SIDING COLOUR.
- 12 CEILING DESTRATIFICATION FAN SUSPENDED FROM STRUCTURE. LOCATE ON/OFF SPEED SWITCH AS SHOWN.
- 13 INSULATED RELIEF HOOD AT HIGH LEVEL, C/W UPTURN ELBOW ON INTERIOR WITH 3"x3" EXPANDED METAL MESH SCREEN, EXTERIOR HOOD WITH BIRDSCREEN, AND MOTORIZED DAMPER AT ENVELOPE PENETRATION. BOTTOM OF DUCT PENETRATION AT ±3251MM AFF.
- 14 ELECTRIC AIR HANDLING UNIT ON INSULATED 600MM HIGH FULL PERIMETER CURB. EXTEND INSULATED SUPPLY AND RETURN DUCTS UP AT EXTERIOR AND OFFSET INTO BUILDING AS SHOWN. BOTTOM OF DUCT PENETRATIONS AT ±3250MM AFF. FIELD INSTALL ECONOMIZER SECTION TO RETURN DUCT. INSULATE EXTERIOR DUCT TO R-27 AS SPECIFIED. PROVIDE C-PORT MODEL DSA OR EQUAL DUCT SUPPORTS. PROVIDE MOTORIZED DAMPERS AT ENVELOPE PENETRATION.
- 15 ELECTRIC BASEBOARD HEATER PROVIDED AND INSTALLED BY ELECTRICAL CONTRACTOR.
- 16 OUTDOOR ENERGY RECOVERY VENTILATOR MOUNTED ON CUSTOM 600MM HIGH INSULATED FULL PERIMETER CURB. EXTEND INSULATED SUPPLY AND RETURN DUCTS UP AT EXTERIOR AND OFFSET INTO BUILDING AS SHOWN. BOTTOM OF DUCT PENETRATION AT WALL APPROXIMATELY ±3250MM AFF. PROVIDE MOTORIZED DAMPERS AT ENVELOPE PENETRATION. INSULATE EXTERIOR DUCTWORK TO R-27 AS SPECIFIED. EXTEND RETURN DUCT INTO CURB AND OFFSET UP TO HRV (BOTTOM) CONNECTION. PROVIDE C-PORT MODEL DSA OR EQUAL DUCT SUPPORTS.
- 17 WALL MOUNT AC UNIT IN ELECTRICAL ROOM. ROUTE INSULATED AND ALUMINUM JACKETED REFRIGERANT PIPING THRU TO EXTERIOR CONDENSING UNIT. ROUTE CONDENSATE TO CONDENSATE PUMP IN MECH 153 (SERVING AH-2). PROVIDE 450MM HIGH SUPPORT STAND FOR CONDENSING UNIT.

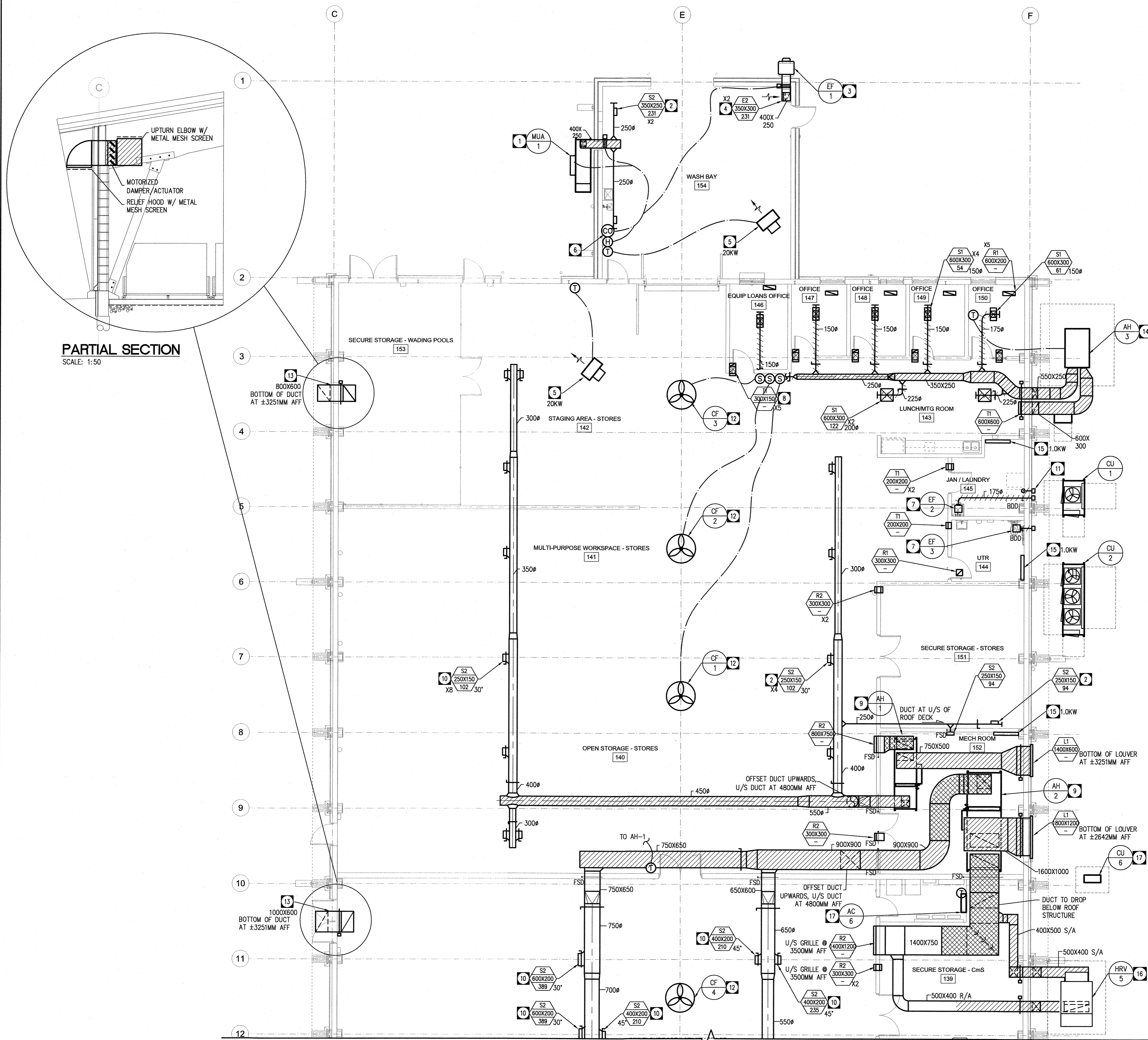
FILE NAME:

DATE:

SHEET TITLE:

PROJECT No.:

ADDRESS:



PARTIAL SECTION

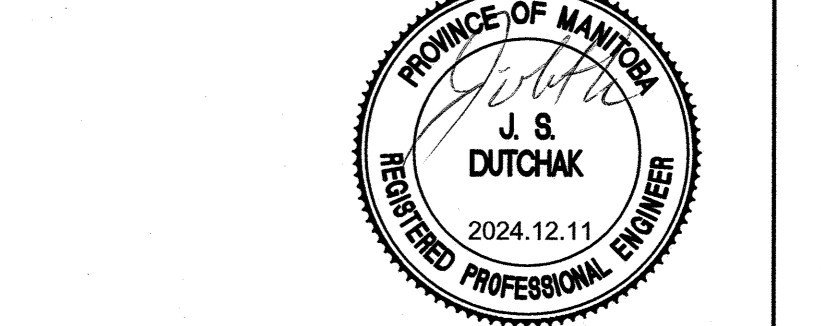
SCALE: 1:50

RENOVATION PLAN - HVAC (NORTH)

SCALE: 1:100



0	ISSUED FOR CONSTRUCTION	JSD	2024.12.11
No.	REVISION/DESCRIPTION	BY	DATE



CT/JSD	JSD	JSD	JSD
DRAWN	CHECKED	DESIGNED	APPROVED
DAZE04.20	USER	TC	

THE CITY OF WINNIPEG  
 ASSETS and PROJECT MANAGEMENT  
 DEPARTMENT  
 MUNICIPAL ACCOMMODATIONS  
 DIVISION  
 PROJECT 3-65 GARRY STREET, R3C 4K4  
**REDEVELOPMENT OF THE  
 OLD EXHIBITION ARENA  
 ISSUED FOR CONSTRUCTION**  
 80 SINCLAIR STREET  
 SHEET TITLE

**RENOVATION PLAN - HVAC  
 (NORTH ARENA)**

SCALE	PROJECT No.	SHEET No.
AS SHOWN	2020-136	M3.0

DRAWING SHEET SIZE: A1 (841mm x 594mm) PLOT 1:1

**NOVA 3 ENGINEERING LTD.**  
 PROFESSIONAL ENGINEERS  
 201-120 FORT STREET TEL: (204) 943-6142  
 WINNIPEG, MANITOBA R3C 1C7 FAX: (204) 942-1276  
 WWW.NOVA3.CA JN: 41-193  
 THIS DRAWING IS THE EXCLUSIVE PROPERTY OF NOVA 3 ENGINEERING LTD.  
 AND MAY ONLY BE REPRODUCED WITH THE WRITTEN PERMISSION OF NOVA 3  
 ENGINEERING LTD.  
 THE CONCEPT AND DESIGN INCORPORATED INTO THIS DRAWING ARE BASED  
 ON INFORMATION PROVIDED BY THE CLIENT AND OTHER RELATED SOURCES.  
 PROFESSIONAL ENGINEER ACCEPTS NO RESPONSIBILITY FOR DRAWING AND  
 DESIGN UNLESS DRAWING IS ACCOMPANIED BY ORIGINAL SEALED LETTER OF  
 INQUIRY OR EQUIVALENT ACCEPTABLE FACSIMILE. PROFESSIONAL ENGINEER  
 ACCEPTS NO RESPONSIBILITY FOR FINAL INSTALLATION CONFORMANCE  
 WITHOUT ORIGINAL SEALED CERTIFICATE OF INSPECTION OR EQUIVALENT  
 ACCEPTABLE FACSIMILE.