

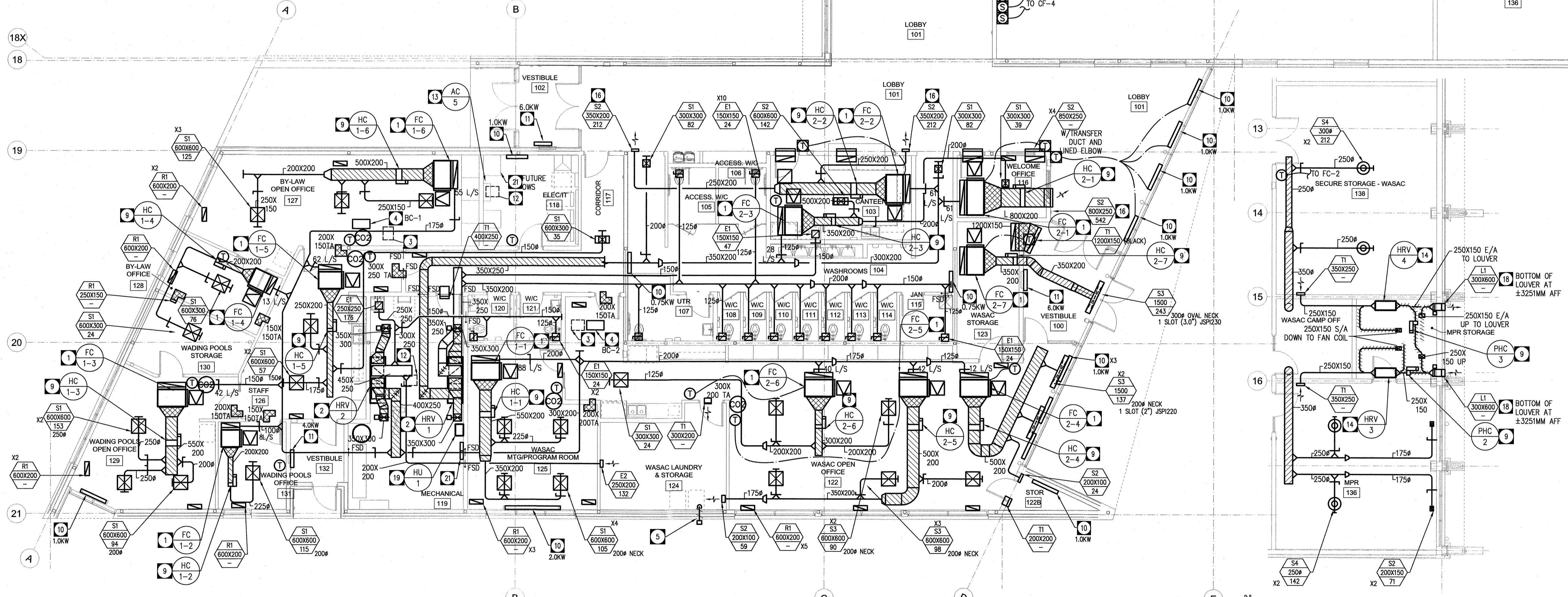
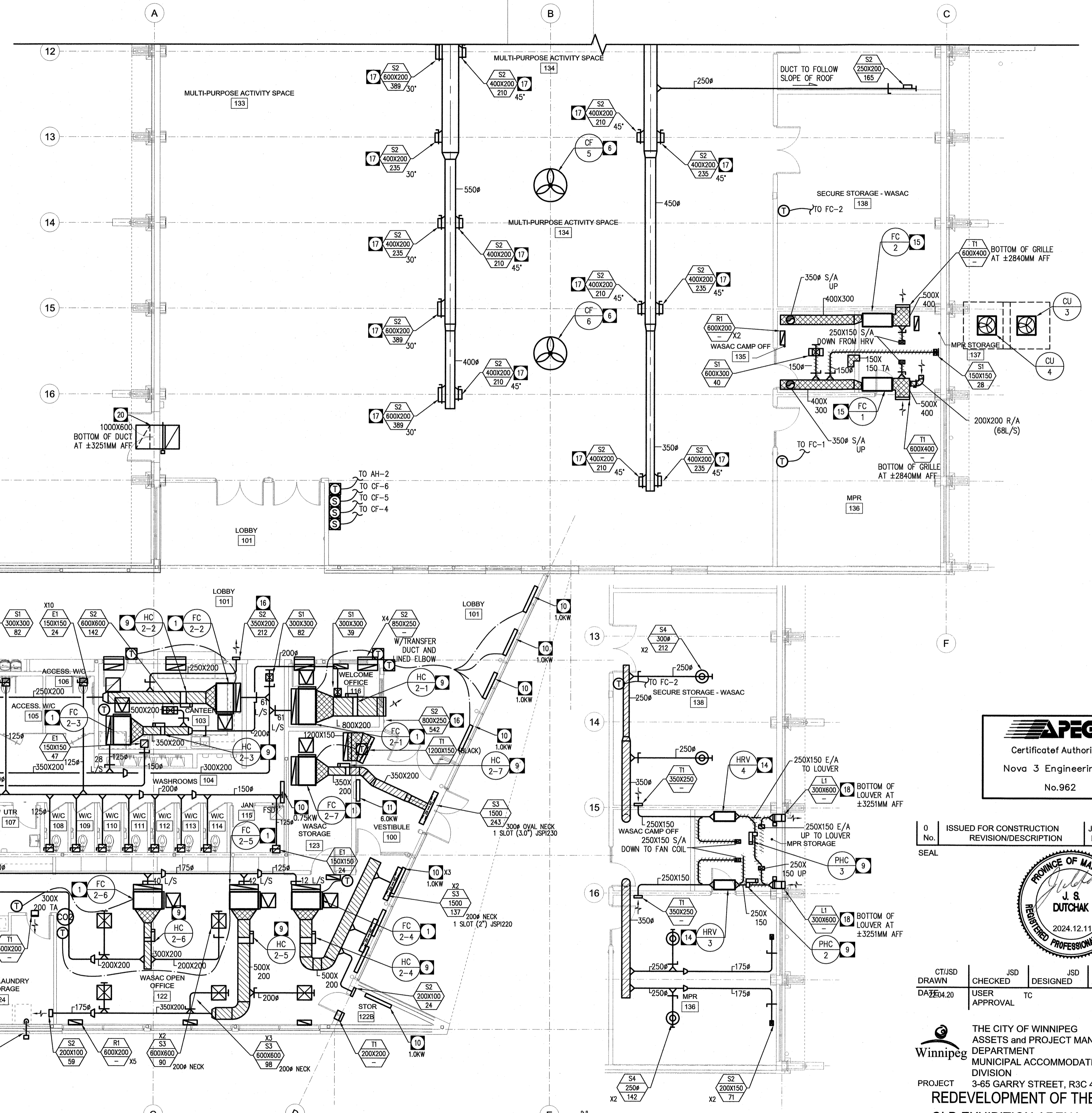
DRAWING NOTES

- 1 VRF FAN COILS SUSPENDED FROM STRUCTURE W/SPRING TYPE VIBRATION ISOLATION. COORDINATE WITH PLUMBING CONTRACTORS FOR CONDENSATE DRAIN CONNECTIONS. PROVIDE ACOUSTIC LINED SUPPLY PLENUM AND RETURN INLET ELBOW, AND FILTER BANK AT RETURN INLET. ROUTE INSULATED S/A DUCT TO ELECTRIC HEATING COIL AND TO ZONE DIFFUSERS. S/A DUCT FROM RESPECTIVE HRV SHALL CONNECT DIRECTLY TO FAN COIL RETURN PLENUM, BALANCE ACCORDINGLY. EXTEND INSULATED REFRIGERANT PIPING FROM RESPECTIVE BRANCH CIRCUIT CONTROLLER TO FAN COIL CONNECTIONS. ENSURE CLEARANCES AND CEILING ACCESS DOORS ARE PROVIDED AT ALL EQUIPMENT TO MEET MANUFACTURER REQUIREMENTS SERVICE AND ACCOMMODATE FILTER REPLACEMENT.
- 2 PAD MOUNT HRV; OFFSET INSULATED S/A DUCT FROM HRV TO VRF FAN COILS. ROUTE INSULATED 350X300 E/A AND O/A FROM HRV OUTLET TO ROOF GOOSENECK HOOD W/ LOW LEAKAGE MOTORIZED DAMPERS AT ENVELOPE PENETRATION; EXTEND R/A DUCT FROM EXHAUST GRILLES BACK TO HRV INLET. ROUTE CONDENSATE DRAINS TO ADJACENT FLOOR DRAIN.
- 3 EXTEND INSULATED/JACKETED VRF PIPING UP THRU TO ROOF MOUNTED HEAT PUMPS VIA INSULATED PITCH BOX; REFER TO DETAIL.
- 4 VRF BRANCH CIRCUIT CONTROLLER IN CEILING SPACE; EXTEND CONDENSATE TO NEAREST AVAILABLE FLOOR DRAIN.
- 5 ROUTE INSULATED RIGID LAUNDRY DRYER EXHAUST DUCT THRU TO EXTERIOR WALL TO STEEL HOODED WALL CAP W/ AND BACKDRAFT FLAP. PRIME COAT AND PAINT HOOD TO MATCH ADJACENT SIDING COLOUR.
- 6 CEILING DESTRATIFICATION FAN SUSPENDED FROM STRUCTURE. LOCATE ON/OFF SPEED SWITCH AS SHOWN.
- 9 DUCT MOUNT ELECTRIC HEATING COILS; REFER TO SEQUENCE OF OPERATIONS.
- 10 ELECTRIC BASEBOARD HEATER PROVIDED/INSTALLED BY ELECTRICAL CONTRACTOR. COORDINATE WITH ELECTRICAL FOR LOCKOUT RELAY TO PREVENT SIMULTANEOUS HEATING/COOLING WHERE FAN COIL SERVES COMMON AREAS.
- 11 ELECTRIC FORCE FLOW HEATER PROVIDED/INSTALLED BY ELECTRICAL CONTRACTOR. FORCE FLOW HEATER PROVIDED/INSTALLED BY ELECTRICAL CONTRACTOR. COORDINATE WITH ELECTRICAL FOR LOCKOUT RELAY TO PREVENT SIMULTANEOUS HEATING/COOLING WHERE FAN COIL SERVES COMMON AREAS.
- 12 EXTEND INSULATED/JACKETED REFRIGERANT PIPING UP THRU TO ROOF MOUNTED CONDENSING UNITS VIA INSULATED PITCH BOX; REFER TO DETAIL.

- 13 WALL MOUNT AC UNIT IN IT ROOM, ROUTE INSULATED/ALUMINUM JACKETED REFRIGERANT PIPING UP TO CONDENSING UNIT ON ROOF THRU INSULATED PITCH BOX. REFER TO ROOF PLAN. PROVIDE 450MM HIGH SUPPORT STAND FOR CONDENSING UNIT. COORDINATE WITH ELECTRICAL CONTRACTOR FOR INSTALLATION OF CURRENT SENSING RELAY TO PROHIBIT OPERATION OF ELECTRIC BASEBOARD DURING COOLING OPERATION.
- 14 HRV SUSPENDED FROM STRUCTURE W/VIBRATION ISOLATION; ROUTE INSULATED O/A FROM INTAKE LOUVER TO HRV INLET VIA MOTORIZED DAMPER AND PREHEAT COIL; ROUTE INSULATED E/A FROM HRV OUTLET TO EXTERIOR LOUVER VIA BACKDRAFT DAMPER; ROUTE R/A DUCT FROM HRV/JANITOR ROOM EXHAUST GRILLES TO HRV INLET; ROUTE INSULATED S/A DUCT TO FAN COIL INLET PLENUM, BALANCE EACH BRANCH DUCT ACCORDINGLY. EXTEND CONDENSATE TO CONDENSATE TRANSFER PUMP.
- 15 HORIZONTAL FAN COIL SUSPENDED FROM STRUCTURE W/VIBRATION ISOLATION. OFFSET ACOUSTIC LINED SUPPLY/RETURN DUCTS AS SHOWN. ROUTE INSULATED/ALUMINUM JACKETED REFRIGERANT PIPING TO EXTERIOR PAD MOUNT CONDENSING UNIT. U/S OF FAN COIL AT 2810MM AFF.
- 16 SIDEWALL SUPPLY GRILLE AT U/S OF LOBBY CEILING STRUCTURE. COORDINATE HEIGHT WITH ARCHITECTURAL BUILDING SECTIONS.
- 17 SUPPLY GRILLE MOUNTED ON DUCT TO DISCHARGE DOWNWARD FROM HORIZONTAL AT NOTED ANGLE.
- 18 EXTERIOR LOUVER AT HIGH LEVEL. DIVIDE LOUVER AREA IN VERTICAL TO ACCOMMODATE INDEPENDENT CONNECTIONS TO HRV-4 AND HRV-5. PROVIDE MOTORIZED DAMPERS ON EACH O/A AND E/A CONNECTIONS (4 MOTORIZED DAMPERS).
- 19 PAD MOUNT ELECTRIC-STEAM HUMIDIFIER IN MECHANICAL ROOM SERVING HRV-2. COORDINATE WITH PLUMBING CONTRACTOR FOR CONNECTION OF STEAM/CONDENSATE PIPING TO DUCT MOUNT STEAM DISPERSION MANIFOLD. PROVIDE WATER TIGHT ALUMINUM DUCT SECTION (1200MM) CROSS BROKEN AND SLOPED TO DRAIN PAN/PORT WITH DEEP SEAL TRAP.
- 20 INSULATED RELIEF HOOD AT HIGH LEVEL, C/W UPTURN ELBOW ON INTERIOR AND 4X4" EXPANDED METAL MESH SCREEN, EXTERIOR HOOD WITH BIRDSCREEN, AND MOTORIZED DAMPER AT ENVELOPE PENETRATION. BOTTOM OF DUCT AT ±3250MM AFF.
- 21 PROPOSED LOCATION OF VRF/BUILDING EMC CONTROLLERS. COORDINATE FINAL LOCATION WITH CITY OF WINNIPEG. PROVIDE ALL WIRING AND AUXILIARY DEVICES FOR FUTURE OPERATOR WORKSTATION WITHIN ELECTRICAL/IT ROOM 118.

NOTES:

FILE NAME: _____ DATE: _____ PROJECT No: _____ SHEET TITLE: _____ ADDRESS: _____



RENOVATION PLAN - HVAC (SOUTH)
SCALE: 1:100

UPPER LEVEL PLAN - MPR 136/STOR 138
SCALE: 1:100



0	ISSUED FOR CONSTRUCTION	JSD	2024.12.11
No.	REVISION/DESCRIPTION	BY	DATE



CT/JSD	JSD	JSD	JSD
DRAWN	CHECKED	DESIGNED	APPROVED
DATE: 04.20	USER	TC	
	APPROVAL		

THE CITY OF WINNIPEG
ASSETS and PROJECT MANAGEMENT
DEPARTMENT
MUNICIPAL ACCOMMODATIONS
DIVISION
PROJECT 3-65 GARRY STREET, R3C 4K4

**REDEVELOPMENT OF THE
OLD EXHIBITION ARENA
ISSUED FOR CONSTRUCTION**

80 SINCLAIR STREET
SHEET TITLE

**RENOVATION PLAN - HVAC
(SOUTH ARENA)**

SCALE	PROJECT No:	SHEET No:
AS SHOWN	2020-136	M3.1

DRAWING SHEET SIZE: A1 (841mm x 594mm) PLOT 1:1

NOVA 3 NOVA 3 ENGINEERING LTD.
PROFESSIONAL ENGINEERS
201-120 FORT STREET TEL: (204) 943-6142
WINNIPEG, MANITOBA R3C 1C7 FAX: (204) 942-1276
WWW.NOVA3.CA JUN: 41-193
THIS DRAWING IS THE EXCLUSIVE PROPERTY OF NOVA 3 ENGINEERING LTD.
AND MAY ONLY BE REPRODUCED WITH THE WRITTEN PERMISSION OF NOVA 3
ENGINEERING LTD.
THE CONCEPT AND DESIGN INCORPORATED INTO THIS DRAWING ARE BASED
ON INFORMATION PROVIDED BY THE CLIENT AND OTHER RELATED SOURCES.
PROFESSIONAL ENGINEER ACCEPTS NO RESPONSIBILITY FOR DRAWING AND
DESIGN UNLESS DRAWING IS ACCOMPANIED BY ORIGINAL SEALED LETTER OF
INTENT OR EQUIVALENT ACCEPTABLE FACSIMILE. PROFESSIONAL ENGINEER
ACCEPTS NO RESPONSIBILITY FOR FINAL INSTALLATION CONFORMANCE
WITHOUT ORIGINAL SEALED CERTIFICATE OF INSPECTION OR EQUIVALENT
ACCEPTABLE FACSIMILE.