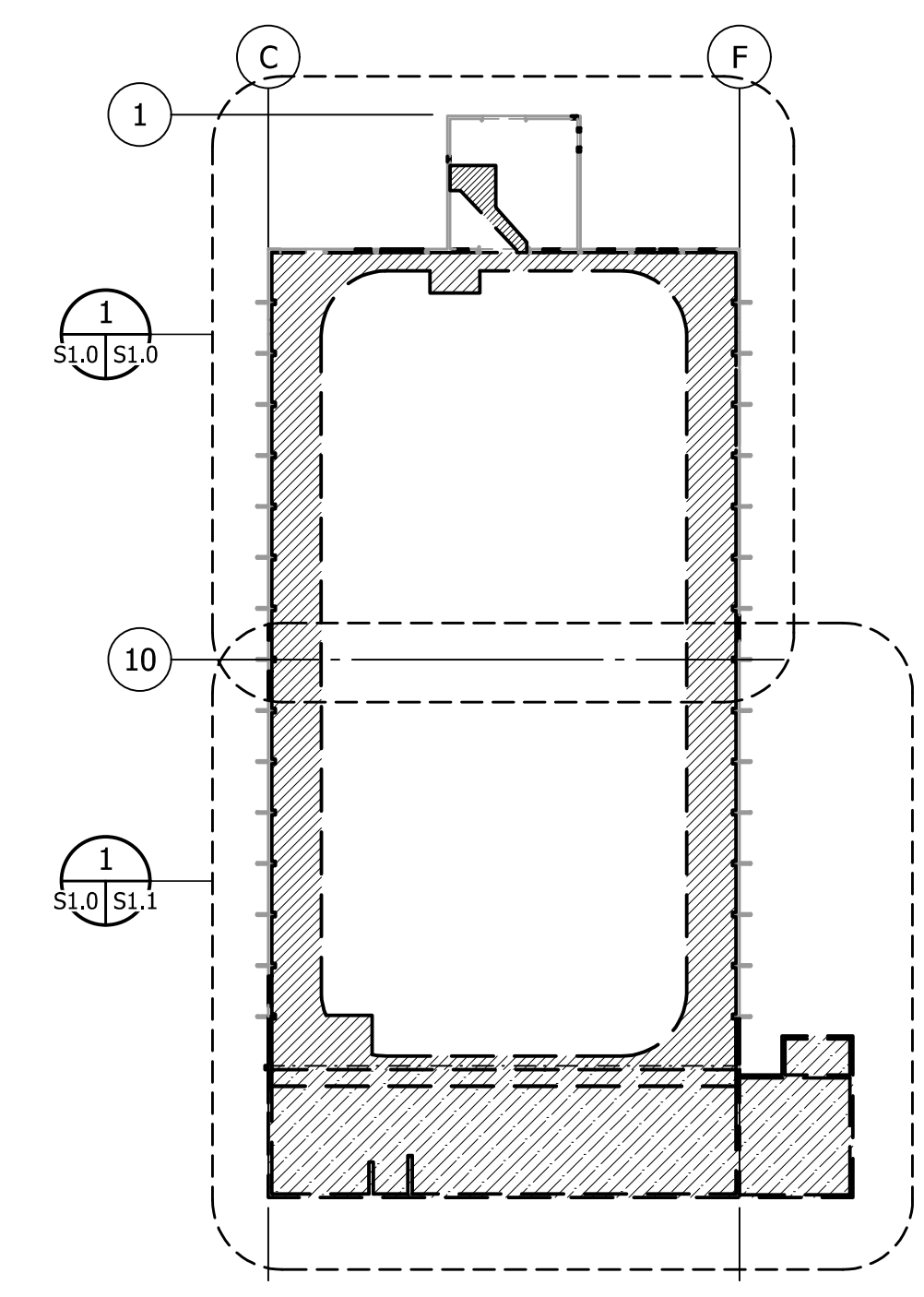
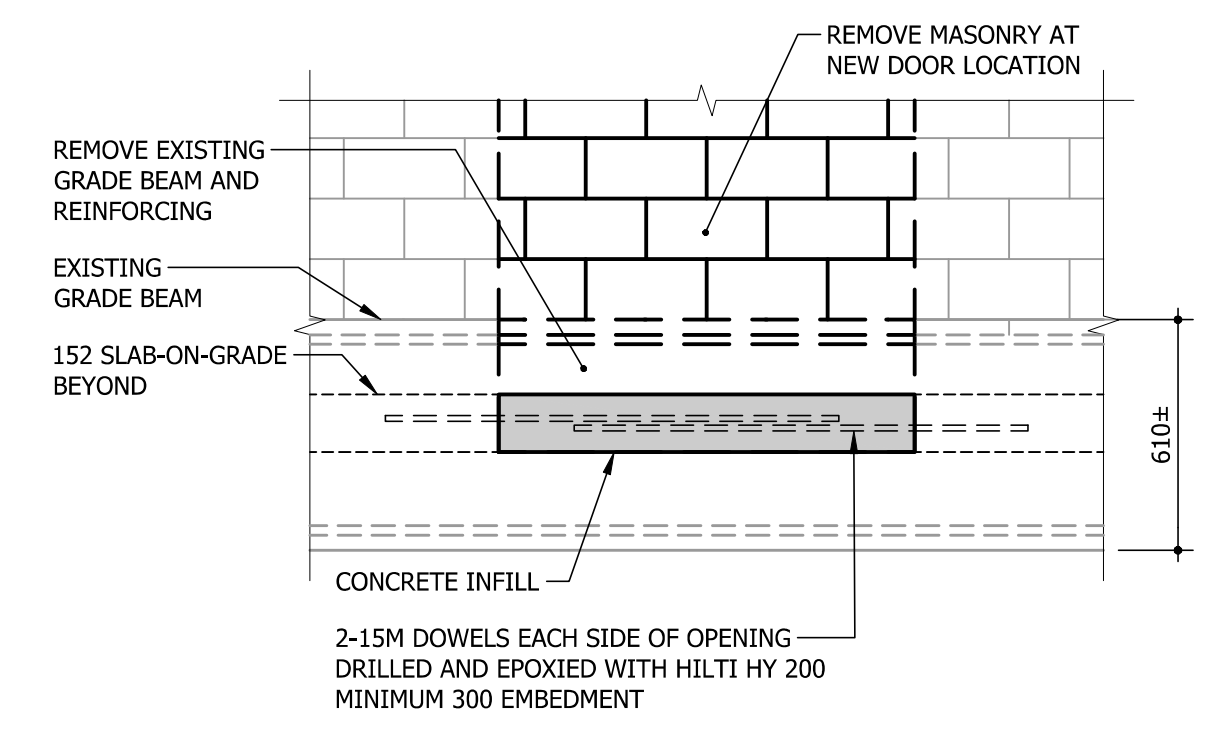


**1** DEMOLITION PLAN - NORTH ARENA  
S1.0 | S1.0 | 1:100



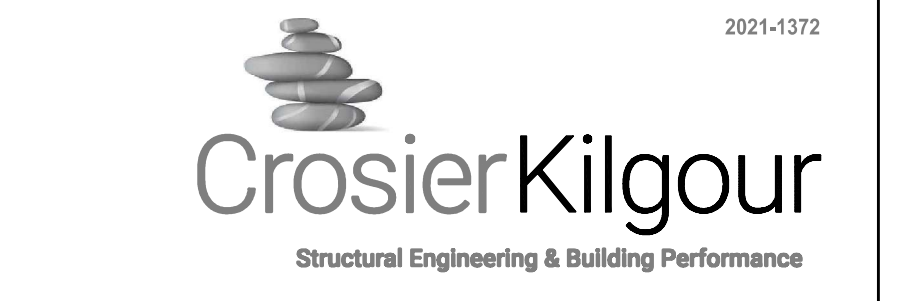
**RENOVATION KEY PLAN**  
1:500

- PLAN KEYNOTES:**
- 1 DEMOLISH PORTION OF EXISTING MASONRY WALL, SHORE AS REQUIRED. COORDINATE LOCATION AND OPENING WITH ARCHITECTURAL.
  - 2 HATCHED AREA INDICATES EXTENT OF EXISTING CONCRETE SLAB TO BE DEMOLISHED. COORDINATE WITH MECHANICAL. DO NOT DAMAGE EXISTING PILASTERS.
  - 3 HATCHED AREA INDICATES EXTENT OF EXISTING STRUCTURE TO BE DEMOLISHED. COORDINATE WITH ARCHITECTURAL. ANY EXISTING DEEP FOUNDATIONS TO BE CUT OFF 1'-0" BELOW U/S OF NEW STRUCTURE ELEVATION.
  - 4 DEMOLISH PORTION OF EXISTING MASONRY WALL FOR MECHANICAL OPENING. SHORE AS REQUIRED. COORDINATE LOCATION AND SIZE WITH MECHANICAL.
  - 5 DEMOLISH TOP 350± OF EXISTING GRADE BEAM AT OPENING LOCATION, SEE DETAIL A/S1.0.
  - 6 REMOVE WOOD ROOF OVERHANG.



**A** DETAIL  
S1.0 | S1.0 | 1:20

NOTES:



0	ISSUED FOR CONSTRUCTION	BCC	12/17
No.	REVISION/DESCRIPTION	BY	DATE



**ENGINEERS  
GEOLOGISTS  
MANITOBA**  
Certificate of Authorization  
Crosier Kilgour & Partners Ltd.  
No. 235

KGT/ERB	BF	BCC	BF
DRAWN	CHECKED	DESIGNED	APPROVED
DATE	USER	CAD	APPROVAL
2024.12.16			

THE CITY OF WINNIPEG  
ASSETS and PROJECT MANAGEMENT  
DEPARTMENT  
MUNICIPAL ACCOMMODATIONS  
DIVISION  
PROJECT 3-65 GARRY STREET, R3C 4K4  
**OLD EXHIBITION ARENA  
REDEVELOPMENT**  
ISSUED FOR CONSTRUCTION  
80 SINCLAIR STREET

SHEET TITLE  
**DEMOLITION PLAN  
NORTH ARENA**

SCALE	PROJECT No:	SHEET No:
AS SHOWN	2020-136	<b>S1.0</b>