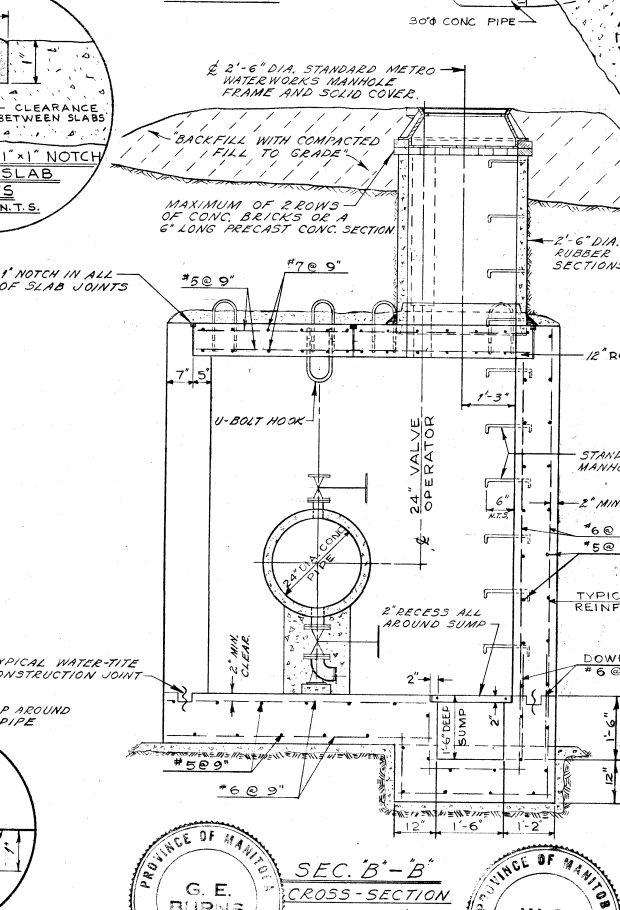
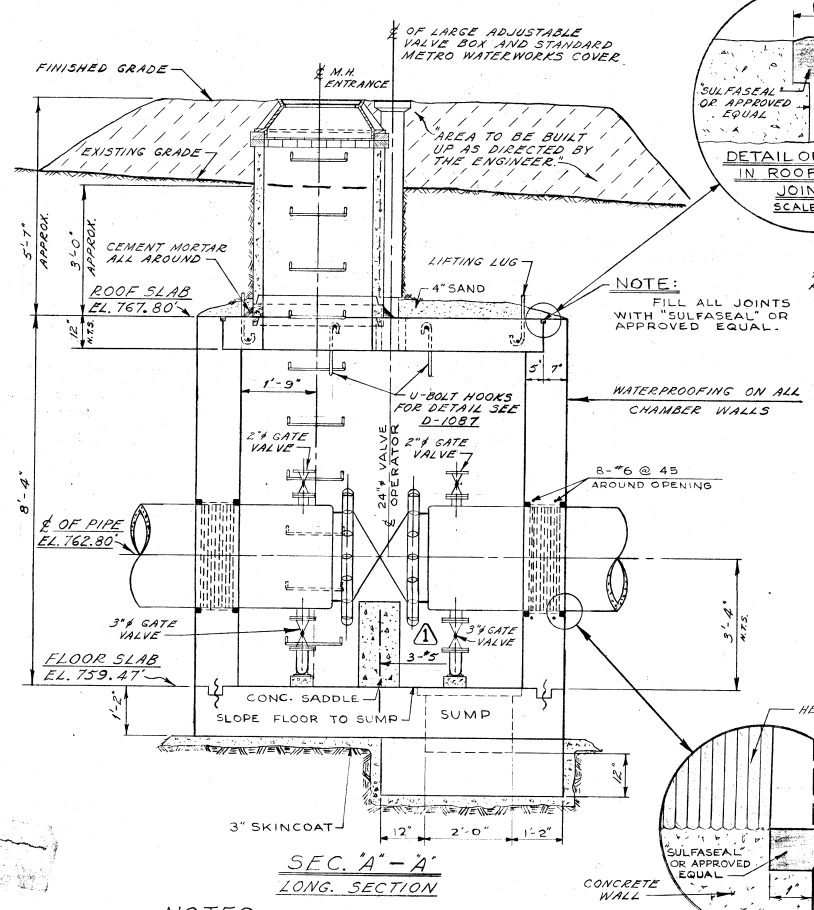
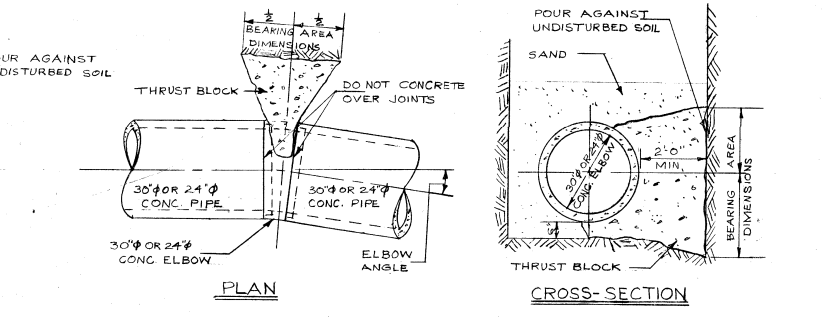
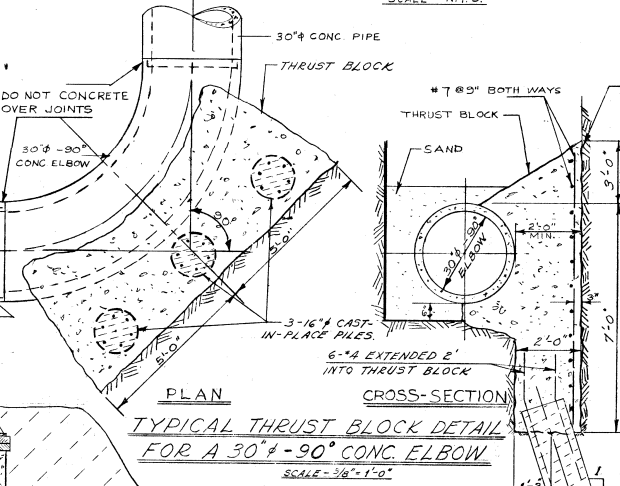
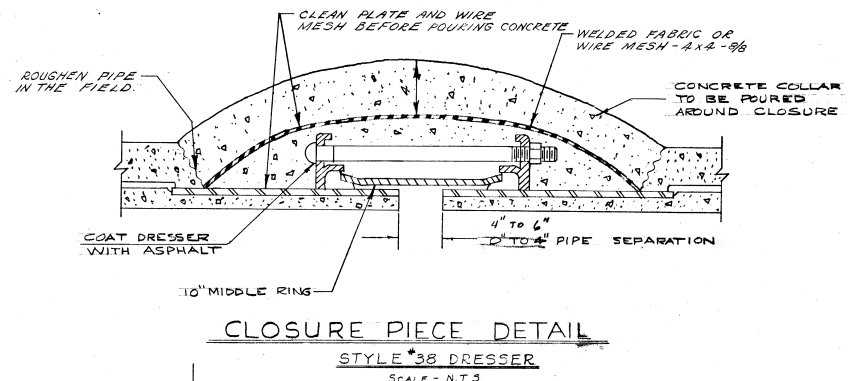
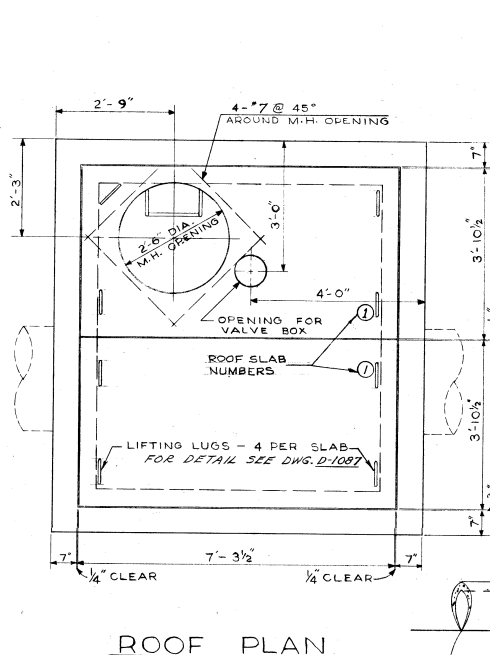
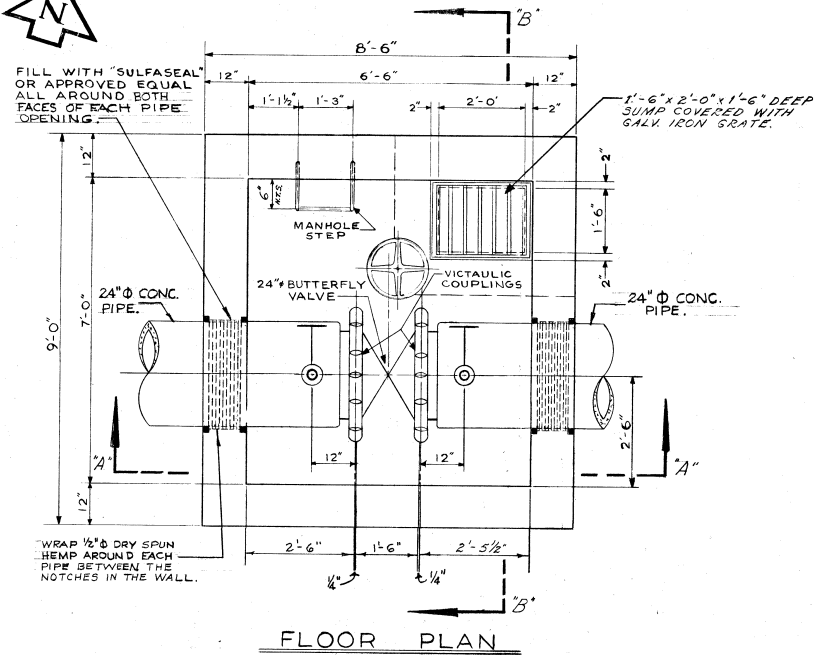


APPENDIX 'A'
RECORD DRAWINGS



NOTE: CHAMBER NOTES FOR THE 24" MAIN LINE VALVE CHAMBERS ARE THE SAME AS FOR THE 30" MAIN LINE VALVE CHAMBER. SEE DWS. D-1086 - NOTES FOR CHAMBERS

LIST OF THRUST BLOCKS				
NO.	LOCATION	ANGLE	BLARING AREA	NO. OF LENGTH PILES OR RAILS
2	30° ELBOW AT P.I. STA. 47+73.90	90° 00' 00"	10'-0" x 10'-0"	3
3	30° ELBOW AT P.I. STA. 50+17.60	90° 00' 00"	10'-0" x 10'-0"	3
4	30° ELBOW AT P.I. STA. 54+68.20	90° 00' 00"	10'-0" x 10'-0"	3
5	30° ELBOW AT P.I. STA. 55+27.62	90° 00' 00"	10'-0" x 10'-0"	3
6	30° ELBOW AT P.I. STA. 64+76.64	90° 00' 00"	10'-0" x 10'-0"	3
7	30° ELBOW AT P.I. STA. 65+54.64	90° 00' 00"	10'-0" x 10'-0"	3
8	30° ELBOW AT P.I. STA. 86+73.00	7° 30' 00"	4'-0" x 3'-0"	—
9	30° ELBOW AT P.I. STA. 87+37.79	7° 30' 00"	4'-0" x 3'-0"	—
10	24° ELBOW AT P.I. STA. 115+32.80	5° 00' 00"	3'-0" x 3'-0"	—
11	24° ELBOW AT P.I. STA. 115+97.30	5° 00' 00"	3'-0" x 3'-0"	—

REVISIONS			
NO.	DESCRIPTION	DATE	BY
1	REINFORCING STEEL ADDED TO CONCRETE SADDLE	1 DEC 64	S.A.
2	AS CONSTRUCTED	6 AUG 65	IB
3	REVISED TITLE	09 1990	EN
4			
5			
6			
7			
8			

THE METROPOLITAN CORPORATION OF GREATER WINNIPEG
WATERWORKS & WASTE DISPOSAL DIVISION
 WATERWORKS DEPT.
CHARLESWOOD-ASSINIBOIA FEEDERMAIN
24" FEEDERMAIN MAIN LINE VALVE CHAMBER
 THRUST BLOCKS AND MISC. DETAILS

APPROVED BY: *[Signature]*
 DESIGNED BY: W.S.B.
 CHECKED BY: G.E.B.
 DRAWN BY: *[Signature]*
 DATE: 21 JULY 64
 SCALES: AS NOTED

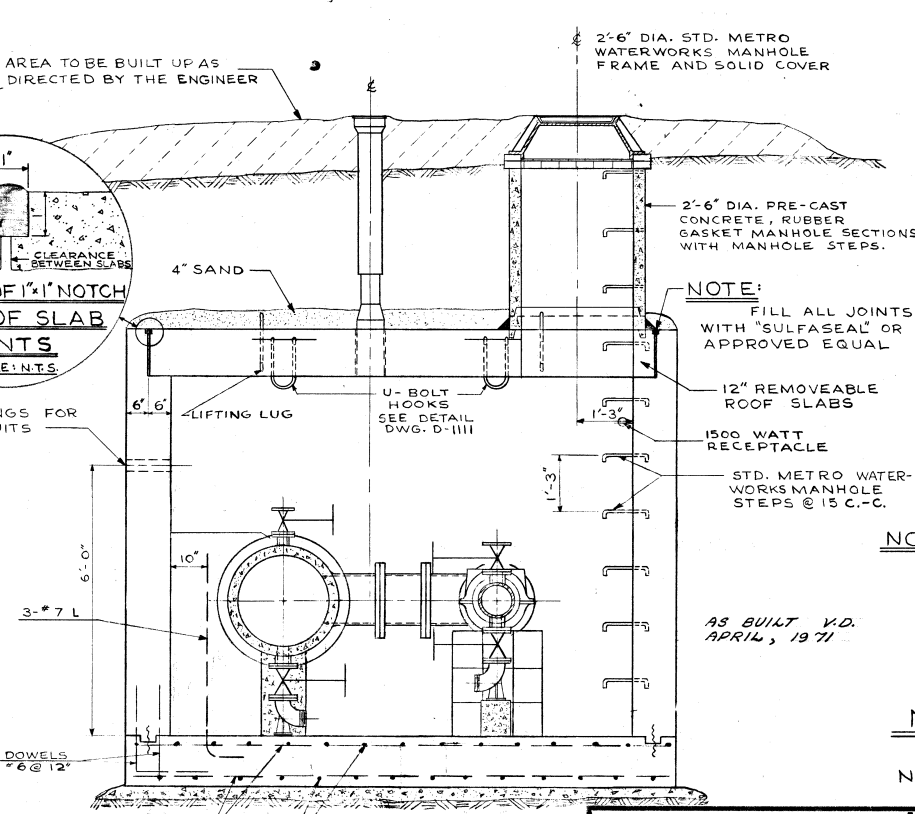
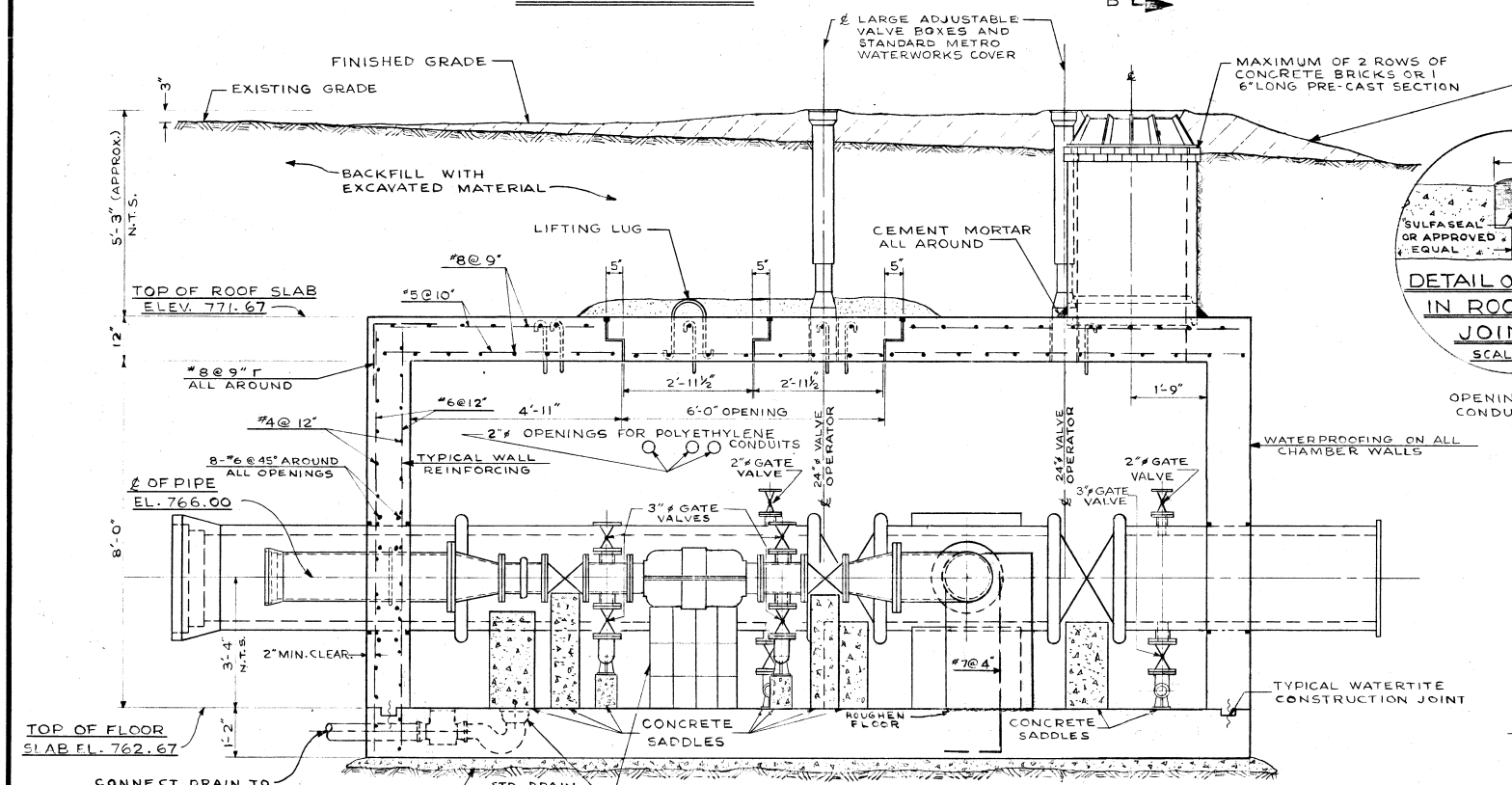
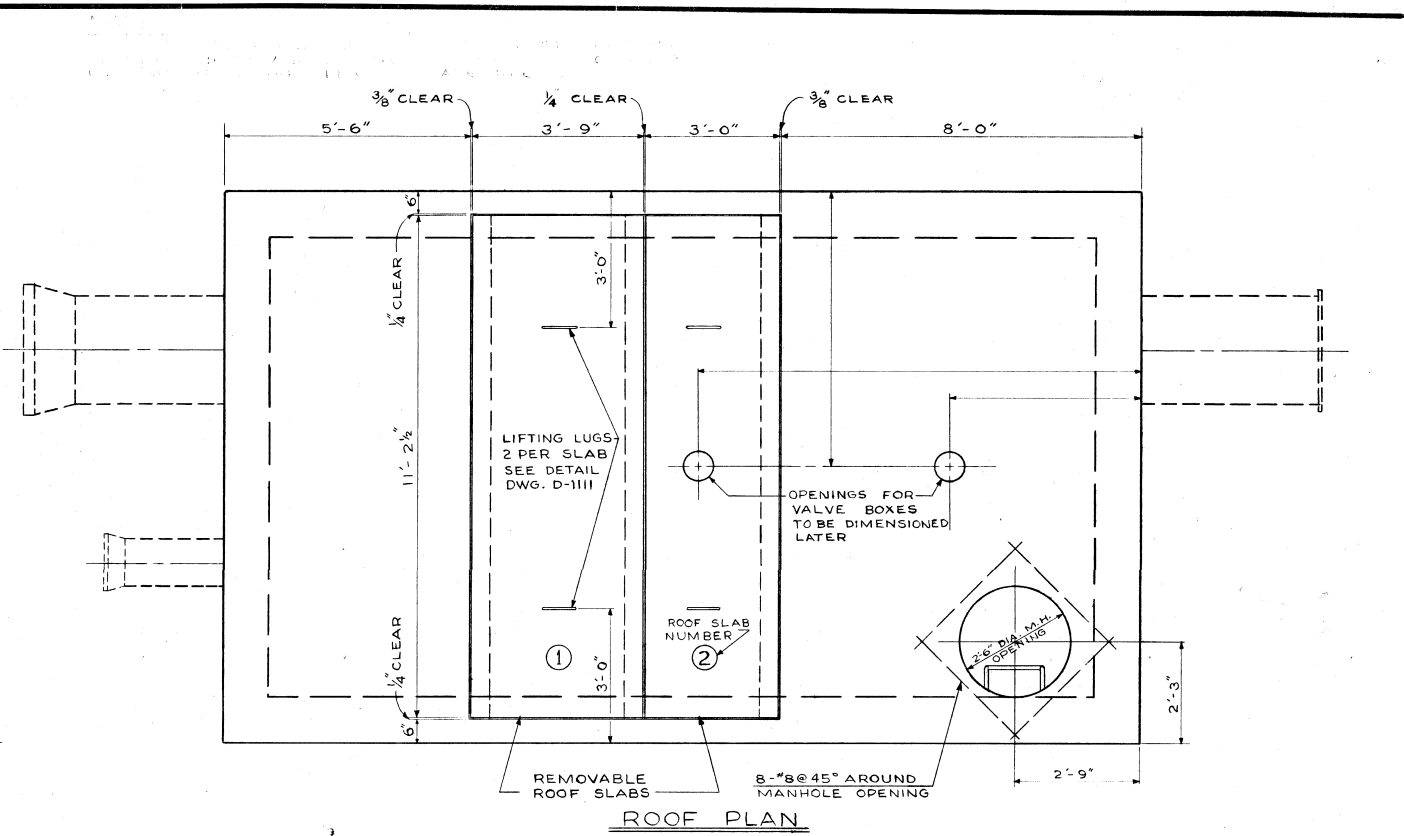
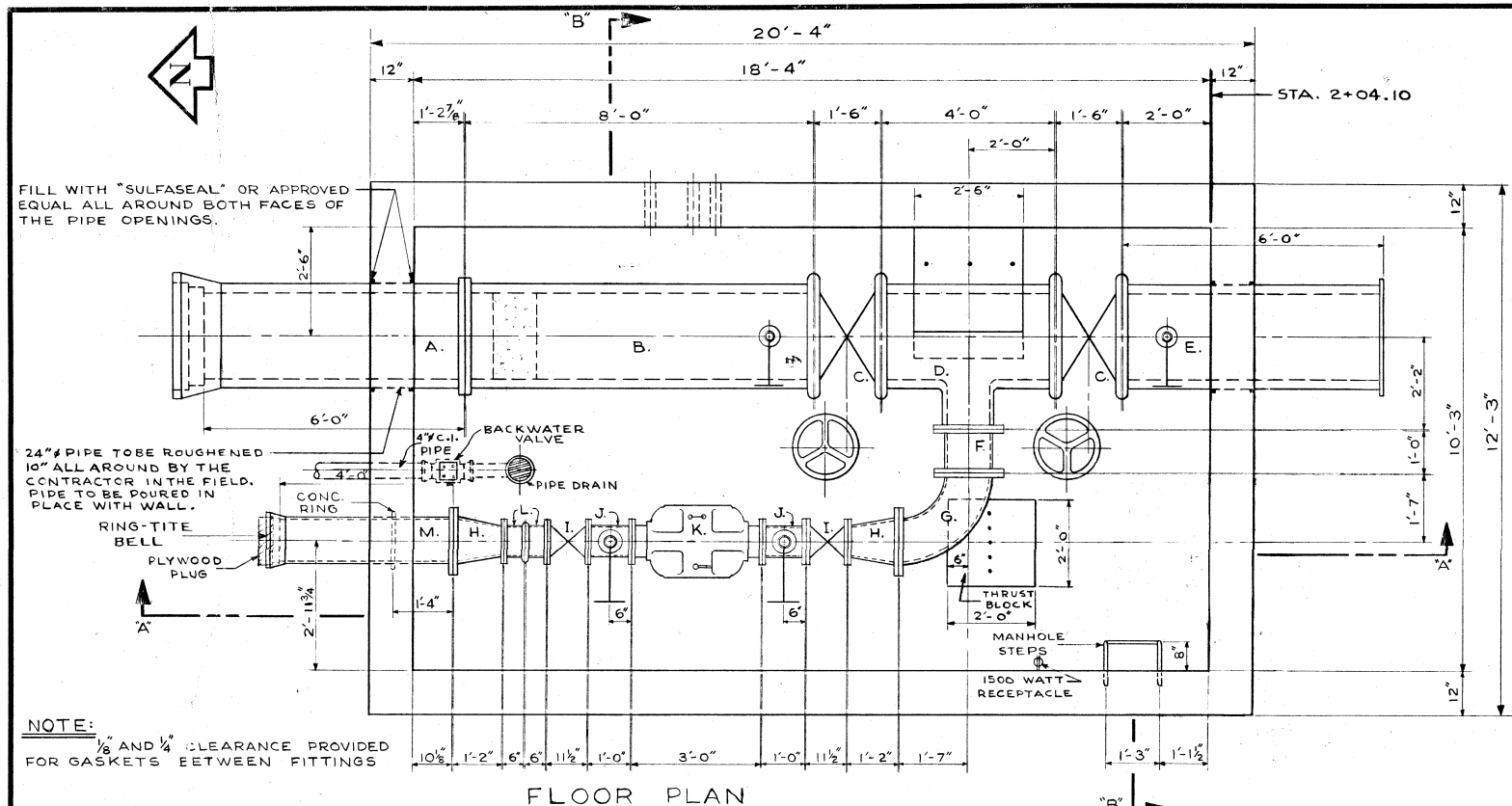
DRAWING NO. **D-1088**

- NOTES**
- FITTINGS REQUIRED FOR EACH 24" PIPE IN CHAMBER ON TOP OF PIPE.
 - WIPPLE (SCREW TO SCREW-ON-FLANGE) - SUPPLIED WITH PIPE.
 - 2" GATE VALVE FLANGED ON BOTTOM OF PIPE.
 - 3" WIPPLE (SCREW TO SCREW-ON-FLANGE) - SUPPLIED WITH PIPE.
 - 3" GATE VALVE FLANGED WITH BRONZE TRIM.
 - 3" - 30" GALV. BASE ELBOW (FLANGE TO SCREEN). JOIN ELBOW TO VALVE WITH SCREW END DIRECTED TOWARDS MANHOLE OPENING.
 - ALL FITTINGS TO BE MADE OF BRONZE UNLESS SPECIFIED OTHERWISE.



DWS 202830

D-1088



LIST OF MATERIALS FOR METER PIT

ITEM	DESCRIPTION	LENGTH
▲ A.	24" CONC. PIPE (FLANGE TO BELL)	6'-0"
▲ B.	24" CONC. PIPE (VICTAULIC TO FLANGE)	8'-0"
▲ C.	2-24" VICTAULIC BUTTERFLY VALVE	1'-6"
▲ D.	24" x 24" x 12" CONC. TEE (VICT. TO VICT. TO FLANGE)	4'-0"
▲ E.	24" CONC. PIPE (FLANGE TO VICTAULIC)	6'-0"
F.	12" C.I. FILLER PIECE FLANGED	1'-0"
G.	12" C.I. ELBOW FLANGED	1'-7"
H.	2-12" x 8" C.I. REDUCER/INCREASER FLANGED	1'-2"
▲ I.	2-8" GATE VALVES FLANGED	11 1/2"
▲ J.	2-8" C.I. FILLER PIECES FLANGED WITH OUTLETS	1'-0"
▲ K.	8" # MAGNETIC-FLOW METER FLANGED	3'-0"
L.	2-8" C.I. FILLER PIECES (FLANGE TO VICTAULIC)	0'-6"
▲ M.	12" C.I. PIPE (FLANGE TO BELL)	4'-0"

NOTE:

- ITEMS J. TO HAVE 3" TAPPED HOLES ON OPPOSITE SIDES.
- ITEM M. TO HAVE A CONCRETE RING 1'-4" FROM THE FLANGED END
- ▲ THE METRO CORPORATION WILL SUPPLY ITEMS A., B., C., D., E., I., J., K.; ALSO 4-24" VICTAULIC COUPLINGS AND AN 8" VICTAULIC COUPLING.

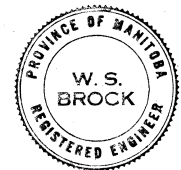
NOTE: FOR FURTHER DETAILS AND NOTES ON METER PIT SEE DWG. D-1111

AS BUILT V.D. APRIL, 1971

SEC. "A-A"
LONG. SECTION

DETAIL OF METER PIT AT STA. 204.1
SCALE: 1/2" = 1'-0"

SEC. "B-B"
CROSS-SECTION



REVISIONS			
NO.	DESCRIPTION	DATE	BY
1	TITLE BLOCK REVISED	02NOV90	MED
2			
3			
4			
5			
6			
7			
8			

THE METROPOLITAN CORPORATION OF GREATER WINNIPEG
WATERWORKS & WASTE DISPOSAL DIVISION
WATERWORKS DEPT.

CHARLESWOOD-ASSINABOIA FEEDERMAIN RIVER CROSSING
METER PIT - ROUGE ROAD AT ASSINABOINE AVENUE
STA. 2+04.10

APPROVED BY: [Signature]
DESIGNED BY: W. S. B.
DRAWN BY: A. C.
DATE: JULY 31/71

CHIEF ENGINEER

SCALE: AS NOTED

DRAWING NO. **D-1110**