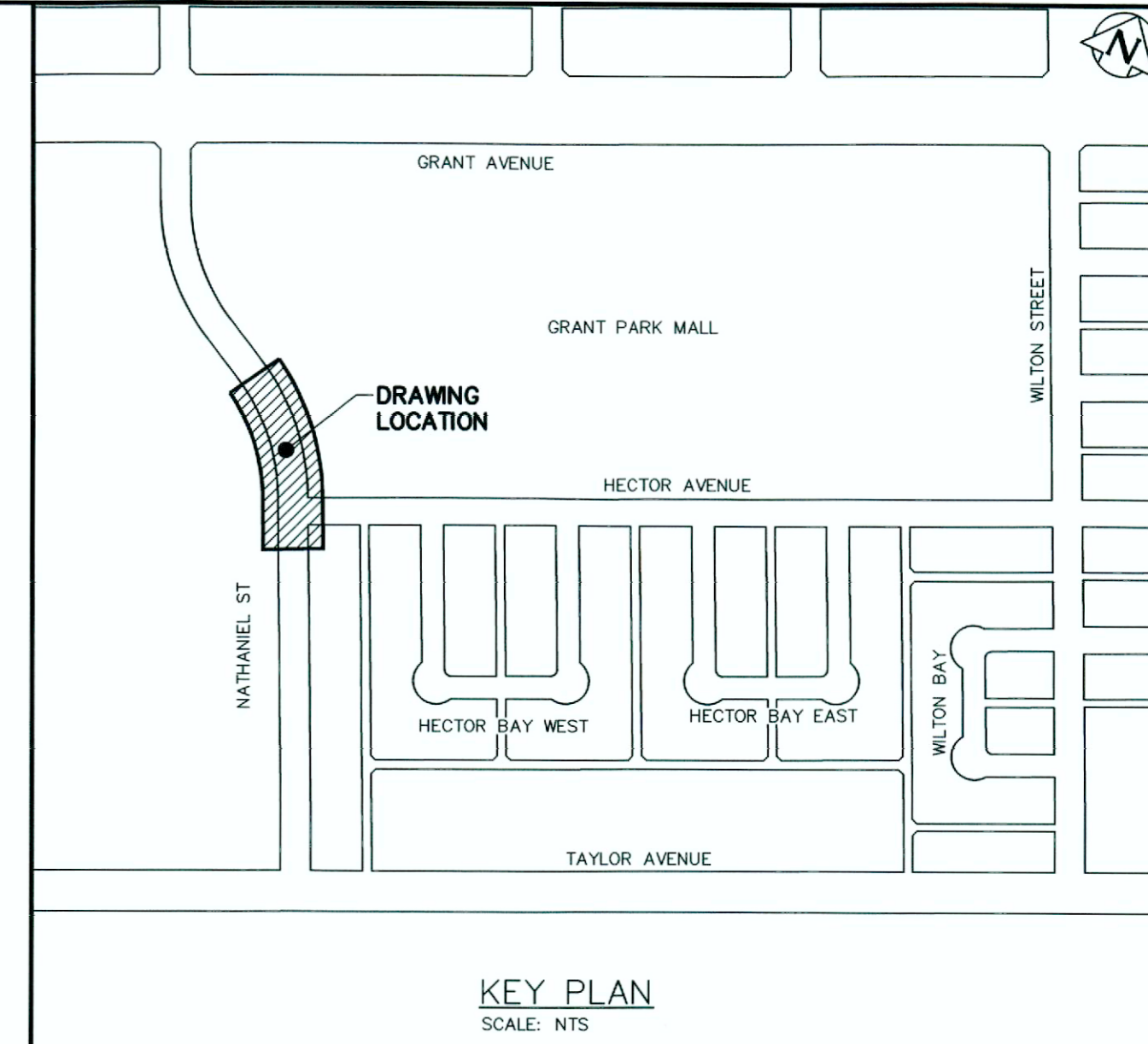


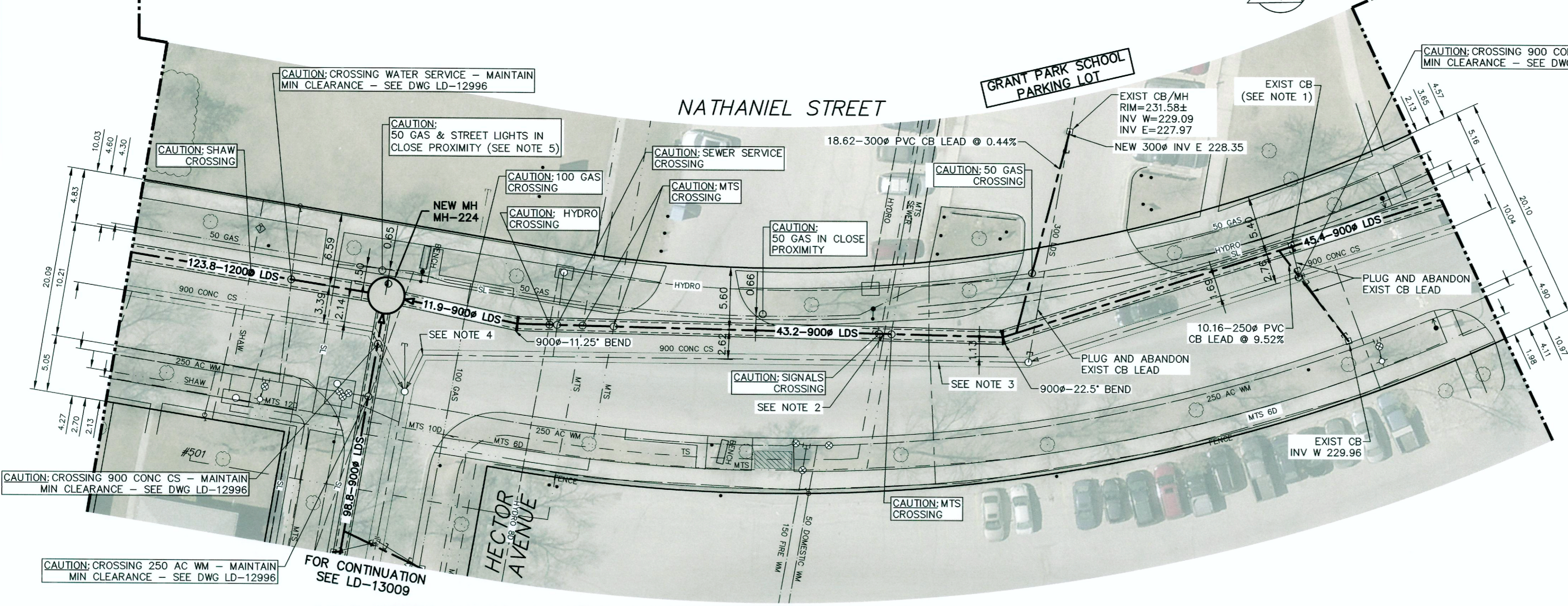
NOTE: CHAINAGES SHOWN ARE ALONG WEST NATHANIEL STREET

STA 3+15 MATCHLINE
SEE LD-13005

STA 4+30 MATCHLINE
SEE LD-13007



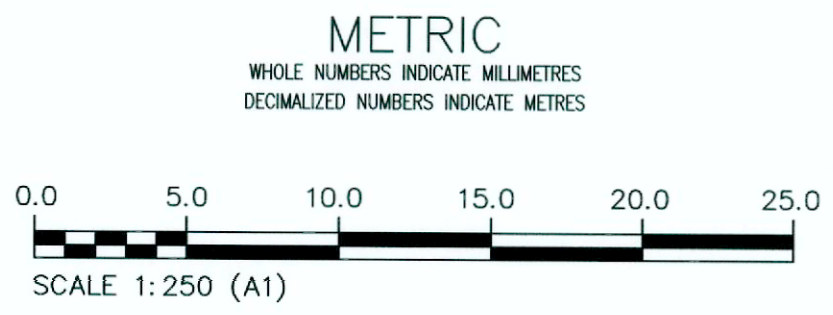
- NOTES:**
1. THE EXISTING CATCH BASIN WAS NOT ACCESSIBLE FOR MEASUREMENTS DUE TO THE ASPHALT LAYER COVERING PART OF THE GRATE. THE EXACT CB LEAD INVERT TO BE VERIFIED IN THE FIELD.
 2. SOFT DIG TO CONFIRM THE DEPTH OF EXISTING SEWER SERVICE PRIOR TO INSTALLING THE NEW 900mm LDS.
 3. INSPECT EXISTING 900mm CONC CS FROM MANHOLE S-MH60009583 TO MANHOLE S-MH60009584 PRIOR TO AND AFTER INSTALLATION OF THE NEW LDS PIPE TO DETERMINE IF ANY DAMAGE IS CAUSED TO THE EXISTING 900mm CS DURING THE LDS INSTALLATION DUE TO ITS CLOSE PROXIMITY.
 4. SOFT DIG TO VERIFY DEPTH AND LOCATION OF EXISTING 900mm CONCRETE CS.
 5. FOR ANY EXISTING GAS LINES THAT ARE IN CONFLICT WITH OR IN CLOSE PROXIMITY TO EXCAVATIONS AND SHAFTS THE CONTRACTOR SHALL ENSURE THAT SUITABLE TEMPORARY SUPPORT OF THE GAS LINES IS PROVIDED AS PER MANITOBA HYDRO STANDARD DETAIL "TEMPORARY SUPPORT FOR EXCAVATED GAS PIPELINES" (SD.610.10).



ENGINEERS
GEOSCIENTISTS
MANITOBA

Certificate of Authorization
KGS Group
No. 245

FOR INDEX SEE
LD-12996



PROPERTY LIMITS DELINEATION

DELINEATION OF PROPERTY LIMITS AS SHOWN ON THIS DWG DOES NOT REPRESENT A "LEGAL SURVEY". KGS GROUP MAKES NO REPRESENTATION OR WARRANTY AS TO THE ACCURACY OF PROPERTY LIMITS DELINEATED ON THIS DWG, NOR ON THE DIMENSIONAL ACCURACY OF DWG FEATURES RELATIVE TO THOSE PROPERTY LIMITS.

WARNING

IF POWER EQUIPMENT OR EXPLOSIVES ARE TO BE USED FOR EXCAVATION ON THIS PROJECT THE CONTRACTOR MUST:

- 1) NOTIFY THE GAS COMPANY OF THE PROPOSED LOCATION OF EXCAVATION.
- 2) TAKE PRECAUTION TO AVOID DAMAGE TO GAS COMPANY INSTALLATIONS.

SEE PROVINCIAL REGULATION 210/72 FOR DETAILS

LOCATION APPROVED UNDERGROUND STRUCTURES

SUPV. U/G STRUCTURES COMMITTEE

| DATE | DATE |
|------|------|
| | |
| | |

NOTE:
LOCATION OF UNDERGROUND STRUCTURES AS SHOWN ARE BASED ON THE BEST INFORMATION AVAILABLE BUT NO GUARANTEE IS GIVEN THAT ALL EXISTING UTILITIES ARE SHOWN OR THAT THE GIVEN LOCATIONS ARE EXACT. CONFIRMATION OF EXISTENCE AND EXACT LOCATION OF ALL SERVICES MUST BE OBTAINED FROM THE INDIVIDUAL UTILITIES BEFORE PROCEEDING WITH CONSTRUCTION.

| B.M. | ELEV. |
|------|-------|
| | |
| | |
| | |
| | |
| | |
| | |

| DESIGNED BY | CHECKED BY |
|-------------|------------|
| MID | |
| | |
| | |
| | |
| | |
| | |
| | |
| | |
| | |
| | |

KGS GROUP

ENGINEER'S SEAL
W. A. HANKOVA-DEJNOVA
Member
231816
REGISTERED PROFESSIONAL ENGINEER

THE CITY OF WINNIPEG
WATER AND WASTE DEPARTMENT
ENGINEERING DIVISION

COCKBURN & CALROSSIE SEWER RELIEF WORKS
CONTRACT 13
NATHANIEL STREET
TAYLOR AVENUE TO GRANT AVENUE
STA 3+15 TO STA 4+30

SHEET 12 OF 22
CITY DRAWING NUMBER
LD-13006