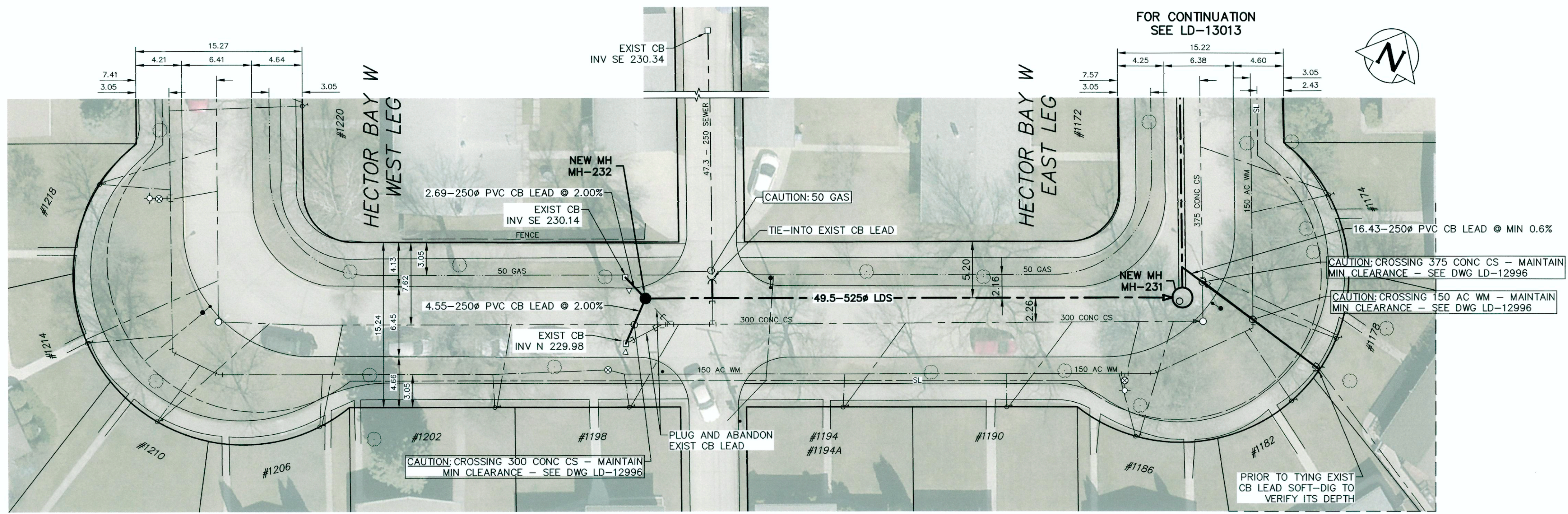
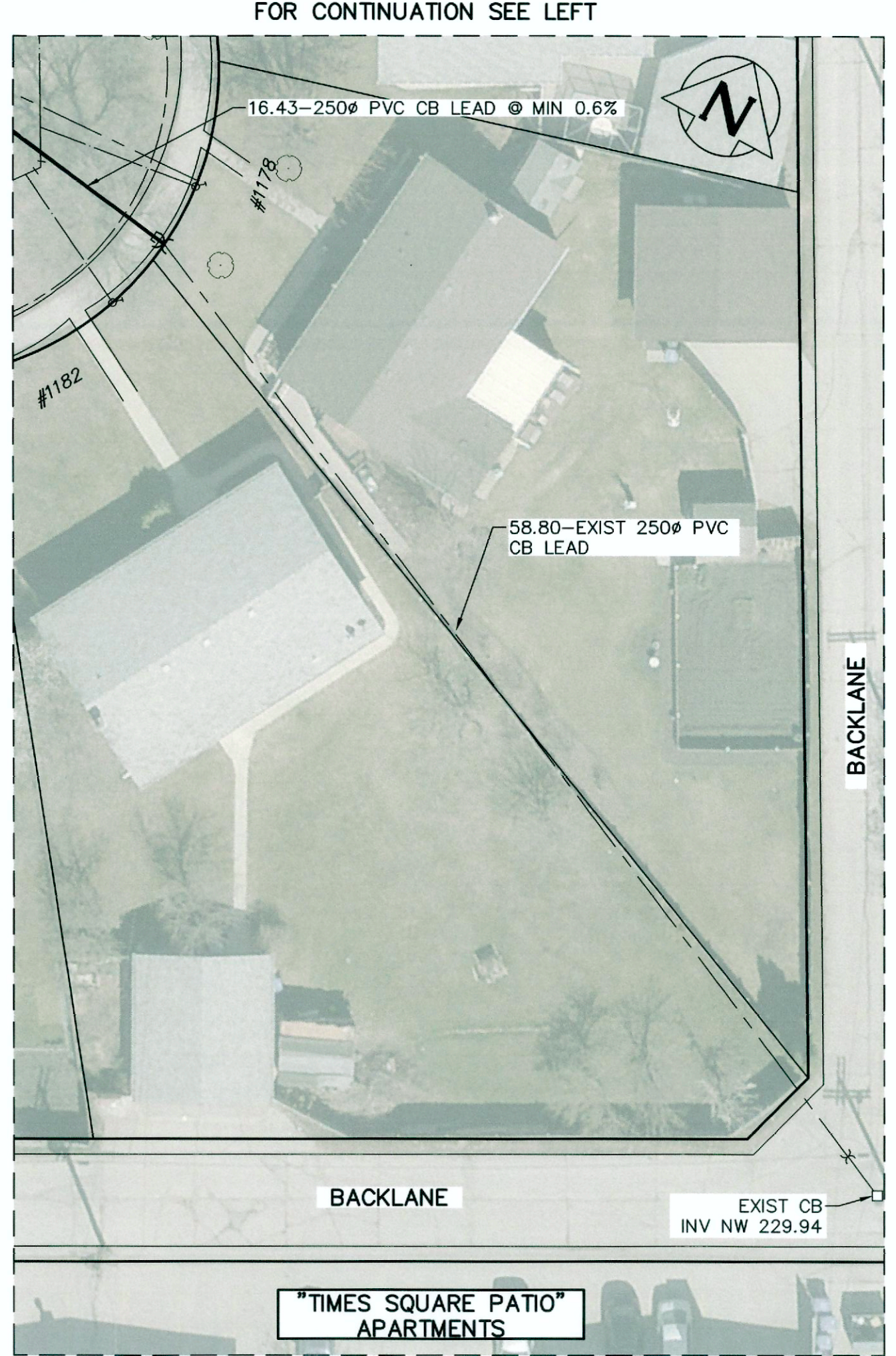


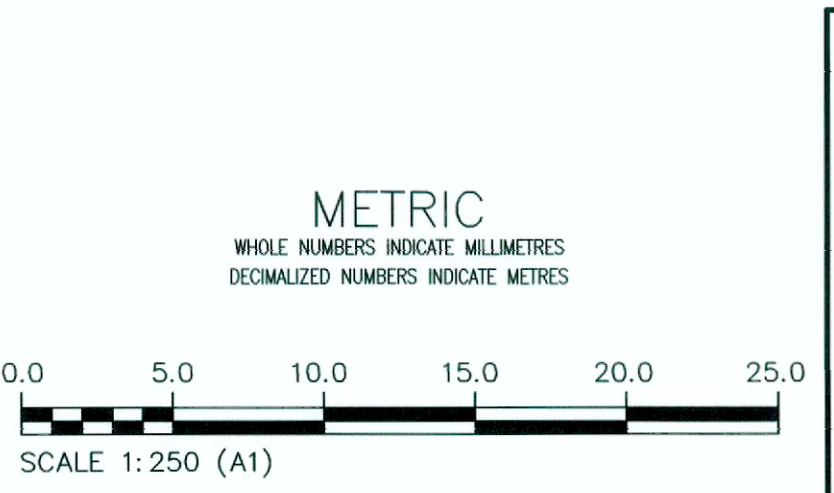
NOTE: CHAINAGES SHOWN ARE ALONG NORTH HECTOR BAY W - SOUTH LEG



HECTOR BAY W - SOUTH LEG



FOR CONTINUATION SEE DETAIL ON THIS SHEET



PROPERTY LIMITS DELINEATION
DELINEATION OF PROPERTY LIMITS AS SHOWN ON THIS DWG DOES NOT REPRESENT A "LEGAL SURVEY". KGS GROUP MAKES NO REPRESENTATION OR WARRANTY AS TO THE ACCURACY OF PROPERTY LIMITS DELINEATED ON THIS DWG, NOR ON THE DIMENSIONAL ACCURACY OF DWG FEATURES RELATIVE TO THOSE PROPERTY LIMITS.

WARNING
IF POWER EQUIPMENT OR EXPLOSIVES ARE TO BE USED FOR EXCAVATION ON THIS PROJECT THE CONTRACTOR MUST:
1) NOTIFY THE GAS COMPANY OF THE PROPOSED LOCATION OF EXCAVATION.
2) TAKE PRECAUTION TO AVOID DAMAGE TO GAS COMPANY INSTALLATIONS.
SEE PROVINCIAL REGULATION 210/72 FOR DETAILS

LOCATION APPROVED UNDERGROUND STRUCTURES
DATE
DATE
DATE
DATE
NOTE:
LOCATION OF UNDERGROUND STRUCTURES AS SHOWN ARE BASED ON THE BEST INFORMATION AVAILABLE BUT NO GUARANTEE IS GIVEN THAT ALL EXISTING UTILITIES ARE SHOWN OR THAT THE GIVEN LOCATIONS ARE EXACT. CONFIRMATION OF EXISTENCE AND EXACT LOCATION OF ALL SERVICES MUST BE OBTAINED FROM THE INDIVIDUAL UTILITIES BEFORE PROCEEDING WITH CONSTRUCTION.

NO.	ISSUED FOR CONSTRUCTION	DATE	BY
0	ISSUED FOR CONSTRUCTION	2024/06/18	KID
	REVISIONS	DATE	BY

DESIGNED BY	MID	CHECKED BY	jm
DRAWN BY	MID	APPROVED BY	R80
SCALE:	HORIZONTAL 1: 250 VERTICAL 1: 50	RELEASED FOR CONSTRUCTION	2024/06/20

ENGINEERS' SEAL
PROVINCE OF MANITOBA
M.A. Member
31615
REGISTERED PROFESSIONAL ENGINEER

Certificate of Authorization
KGS Group
No. 245

CONSULTANT DRAWING NUMBER
11-0107-18-C13-2-C11

THE CITY OF WINNIPEG
WATER AND WASTE DEPARTMENT
ENGINEERING DIVISION

COCKBURN & CALROSSIE SEWER RELIEF WORKS
CONTRACT 13
HECTOR BAY W
SOUTH LEG

SHEET 18 OF 22
CITY DRAWING NUMBER
LD-13012