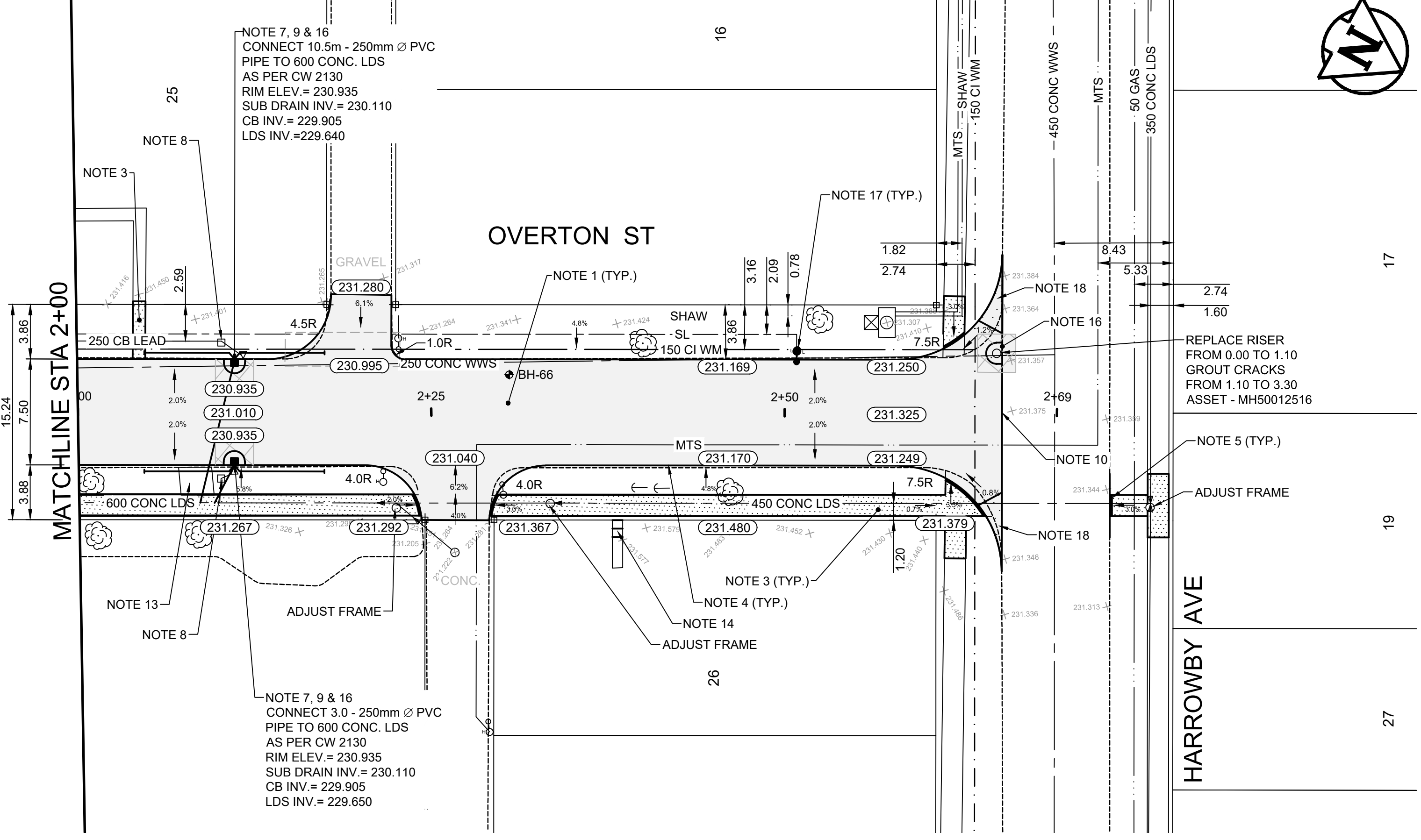


- NOTES:**
- REFER TO SPECIFICATION E13, CONSTRUCTION OF VARIOUS CURB TYPES FOR ASPHALT PAVEMENT OF THE TENDER DOCUMENT
 - TRANSVERSE JOINT SAW CUT EVERY 3.0m TO A MAXIMUM DEPTH OF 25mm

- CONSTRUCTION NOTES**
- REMOVE EXISTING PAVEMENT AND CONSTRUCT NEW 125mm ASPHALT PAVEMENT
 - REMOVE EXISTING APPROACH AND CONSTRUCT NEW 150mm REINFORCED CONCRETE APPROACH (SD-232)
 - RENEW EXISTING CONCRETE SIDEWALK (SD-228A)
 - CONSTRUCT NEW CONCRETE CURB FOR ASPHALT PAVEMENT (SD-200A, E13)
 - CONSTRUCT CURB RAMP (SD-200A, SD-229C, SD-229D)
 - LIMIT OF RECONSTRUCTION
 - INSTALL NEW 1200 CATCH BASIN WITH CURB AND GUTTER INLET FRAME (SD-024), AND CONNECT TO SEWER WITH 250mm Ø PVC PIPE AS PER CW 2130
 - ABANDON EXISTING CATCH BASIN AS PER CW 2130
 - INSTALL 6.0m SUB DRAINS (SD-245), CONNECT TO CATCH BASIN AND CAP ENDS AS PER CW 3120
 - LIMIT OF RECONSTRUCTION
 - INSTALL NEW FRAME AND SOLID COVER (AP-006, AP-007), AND ADJUST TO GRADE
 - REMOVE EXISTING APPROACH AND CONSTRUCT NEW 100mm CONCRETE SIDEWALK (SD-228A)
 - REMOVE EXISTING CONCRETE PAD
 - RE-GRADE EXISTING PAVING STONE
 - CONSTRUCT NEW CONCRETE LIP CURB FOR ASPHALT PAVEMENT (SD-200A)
 - CONSTRUCT MIN. 150mm CONCRETE ISOLATION AND INSTALL TYPE B PAVEMENT REPAIR FABRIC (SD-220D)
 - LIGHT STANDARD TO BE INSTALLED IN ACCORDANCE WITH SPECIFICATION E18 OF THE TENDER DOCUMENT
 - CONSTRUCT 150mm REINFORCED CONCRETE PAVEMENT

- GENERAL NOTES**
- PAVEMENT DIMENSIONS ARE TO BACK OF CURB
 - ALL CURB RADII UNDER 15.0m SHALL BE MODIFIED (SD-203B)
 - CURB REPLACEMENT AS DIRECTED BY CONTRACT ADMINISTRATOR
 - CONTRACTOR TO CONFIRM THE LOCATION OF ALL UTILITIES/SERVICES IN THE FIELD PRIOR TO CONSTRUCTION
 - ADJUST ALL EXISTING WATER VALVES AND CURB STOPS TO GRADE
 - PAVEMENT REPAIRS SHOWN ARE A REPRESENTATIVE SAMPLE OF THE TENDER QUANTITIES
 - ALL WATER SERVICES WITHIN THE LIMITS OF THE RECONSTRUCTION SHALL BE INSULATED AS PER SD-018



ISSUED FOR TENDER
NOT TO BE USED FOR CONSTRUCTION

METRIC
WHOLE NUMBERS INDICATE MILLIMETERS
DECIMALIZED NUMBERS INDICATE METERS
TENDER NO. 4-2024

EXISTING	LEGEND - PLAN	PROPOSED	EXISTING	LEGEND - PLAN	PROPOSED	EXISTING	LEGEND - PROFILE	PROPOSED
⊕	HYDRANT	⊕	---	LDS/WWS	---	▭	CONCRETE	▭
⊗	VALVE	⊗	---	WATERMAIN	---	▭	CONCRETE SIDEWALK	▭
⊙	CURB STOP	⊙	---	GAS	---	▭	ASPHALT	▭
⊚	MANHOLE	⊚	---	TRAFFIC SIGNALS	---	▭	PAVEMENT REPAIR FABRIC	▭
⊛	CATCH BASIN	⊛	---	HYDRO/STREET LIGHT	---	▭	WATER SERVICE INSULATION	▭
⊜	CURB INLET	⊜	---	MTS/SHAW	---	⊕	GUY WIRE ANCHOR	⊕
⊝	HYDRO POLE	⊝	---	CURB RENEWAL	---	⊕	UTILITY BOX	⊕
⊞	LIGHT STANDARD	⊞	---	PROPERTY LINE	---	⊕	UTILITY MAN HOLE	⊕
⊟	TEST HOLE	⊟	---	RAMP CURB	---	---	EAST GUTTER	---
⊠	SURVEY BAR	⊠	---	ELEVATIONS	(31.000)	---	CENTRE LINE	---
⊡	GEODETIC BENCH MARK	⊡	---	TREE	---	---	WEST GUTTER	---

LOCATION APPROVED UNDERGROUND STRUCTURES

DATE: _____

NOTE: LOCATION OF UNDERGROUND STRUCTURES AS SHOWN ARE BASED ON THE BEST INFORMATION AVAILABLE. BUT NO GUARANTEE IS GIVEN THAT ALL EXISTING UTILITIES ARE SHOWN OR THAT THE GIVEN LOCATIONS ARE EXACT. CONFIRMATION OF EXISTENCE AND EXACT LOCATION OF ALL SERVICES MUST BE OBTAINED FROM THE INDIVIDUAL UTILITIES BEFORE PROCEEDING WITH CONSTRUCTION.

NO.	REVISIONS	DATE	BY
3.	ISSUED FOR TENDER	24/03/18	T.K.
2.	SUBMIT FOR ENGINEERS REVIEW	24/02/06	T.K.
1.	SUBMIT FOR PLAN APPROVAL	24/02/02	T.K.

B.M. IB @ NW CORNER - ST. MARYS & HARROWBY
ELEV. 231.560

ENGINEERING DIVISION
TECHNOLOGY SERVICES BRANCH
106 - 1155 PACIFIC AVE

DESIGNED BY	V.S.	CHECKED BY	G.K., R.W.
DRAWN BY	V.S.	APPROVED BY	M.L.

HOR. SCALE: 1 : 250
VERTICAL: 1 : 10

DATE: 2024/03/13

THE CITY OF WINNIPEG
PUBLIC WORKS DEPARTMENT

OVERTON STREET
FROM BLENHIM AVE. TO HARROWBY AVE.
ASPHALT RECONSTRUCTION AND ASSOCIATED WORKS
FROM STA. 2+00 TO STA. 2+66

CITY DRAWING NUMBER SE-24-07
SHEET 7 OF 17

2