



COMMISSIONING PLAN FOR CONTRACT 2A FORCE MAIN (TENDER NO. 427-2024)

DESCRIBED HEREIN ARE THE MINIMUM REQUIREMENTS AND EXPECTATIONS FOR THE PURPOSE OF COMMISSIONING THE 450mm CENTERPORT SOUTH - PHASE 1A FORCE MAIN FROM THE LIFT STATION TO DOWNSTREAM INTERCEPTOR SEWER CONNECTION. WATER SUPPLY FOR MEANS OF PIGGING AND PRESSURE TESTING IS AVAILABLE AT OFFTAKE STRUCTURE 3 (OS 3). ALL WATER USED FROM CITY SOURCES WILL BE CHARGED TO CONTRACTOR AS PER SPECIFICATION E49. AT A MINIMUM, THE CONTRACTOR SHALL MEET THE REQUIREMENTS OF THIS PLAN AS OUTLINED. ANY CHANGE OR ALTERATION TO THIS PLAN WILL REQUIRE REVIEW AND APPROVAL BY THE CONTRACT ADMINISTRATOR AS PER B7 OF THE SPECIFICATIONS.

STAGE 1: COMMISSIONING FOR CONTRACT 4A FEEDER MAIN

HYDROSTATIC PRESSURE TESTING OF THE 750mm FEEDER MAIN WAS COMPLETED UNDER TENDER 220-2024.
 1. TENDER 220-2024 WILL BE CONCLUDED BY REPLACING A SPOOL PIECE IN OFFTAKE STRUCTURE 2 (OS 2) BETWEEN THE WYE AND BUTTERFLY VALVE WITH A BLIND FLANGE TO FULLY SEPARATE THE NEW 750mm FEEDER MAIN SYSTEM FROM THE EXISTING SYSTEM UNTIL THE OTHER SYSTEM COMPONENTS ARE READY TO BE COMMISSIONED. THIS IS SHOWN ON SHEET 2 OF THIS APPENDIX.
 2. WATER FROM THE FEEDER MAIN AT OS 3 WILL BE AVAILABLE AFTER AUGUST 15, 2025.

STAGE 2 - OBTAIN WATER SUPPLY FOR CONTRACT 2A FORCE MAIN COMMISSIONING

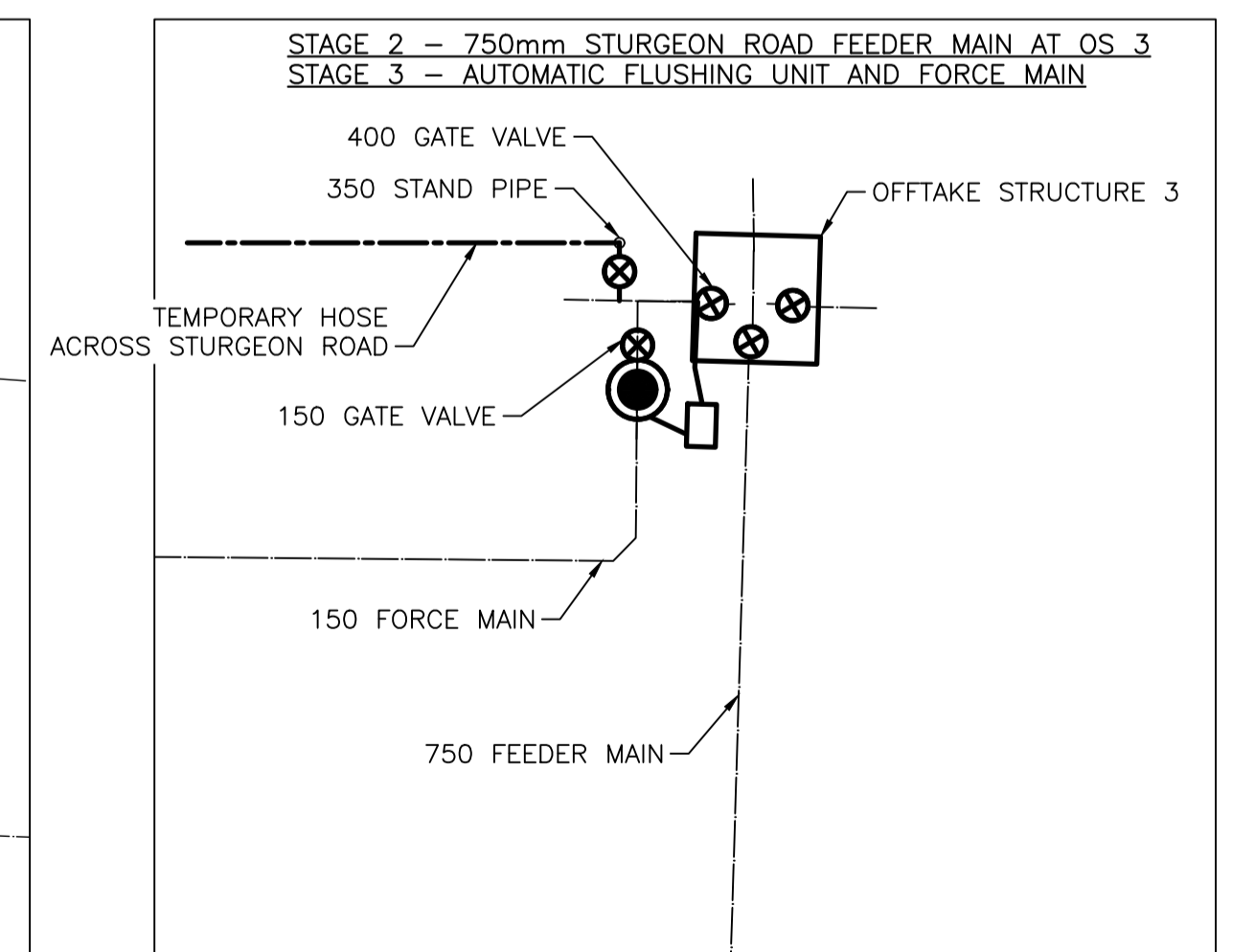
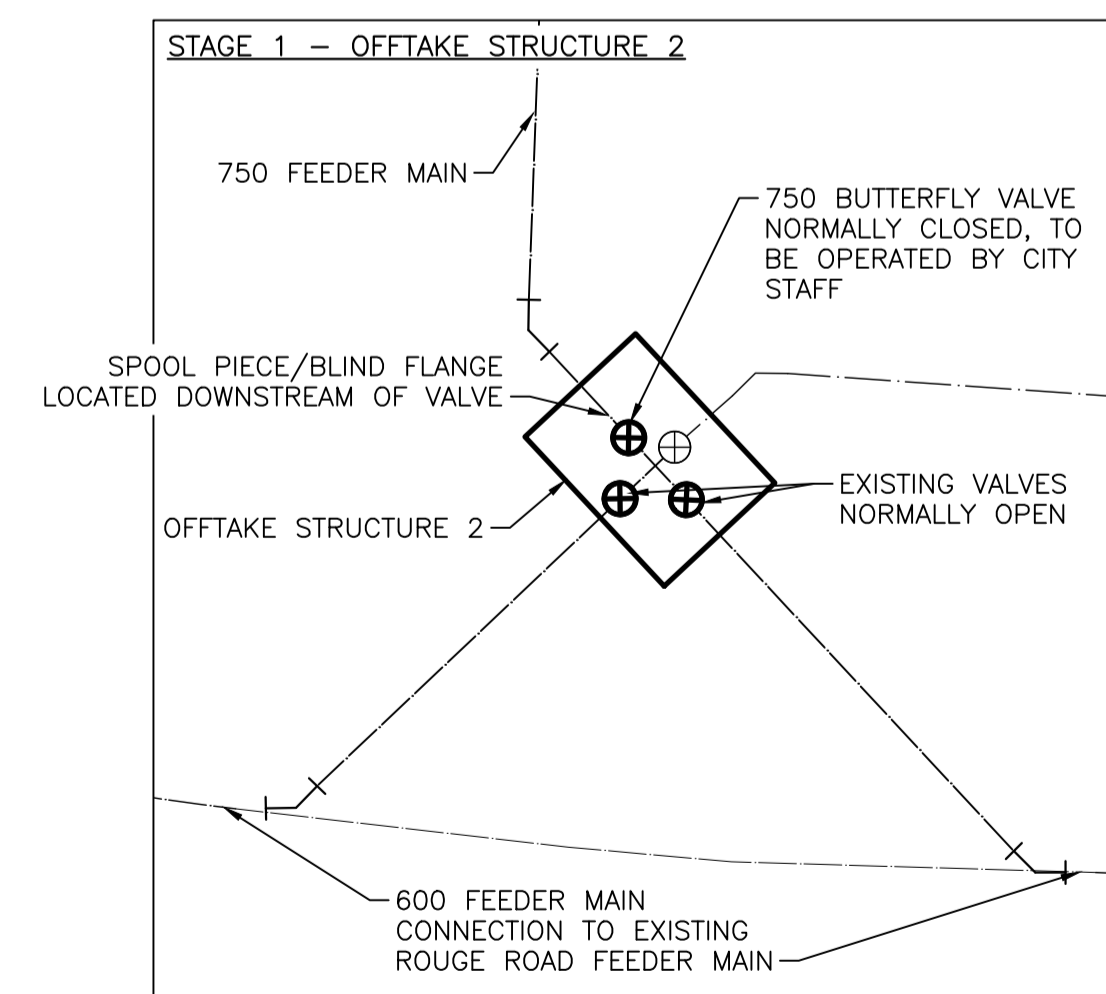
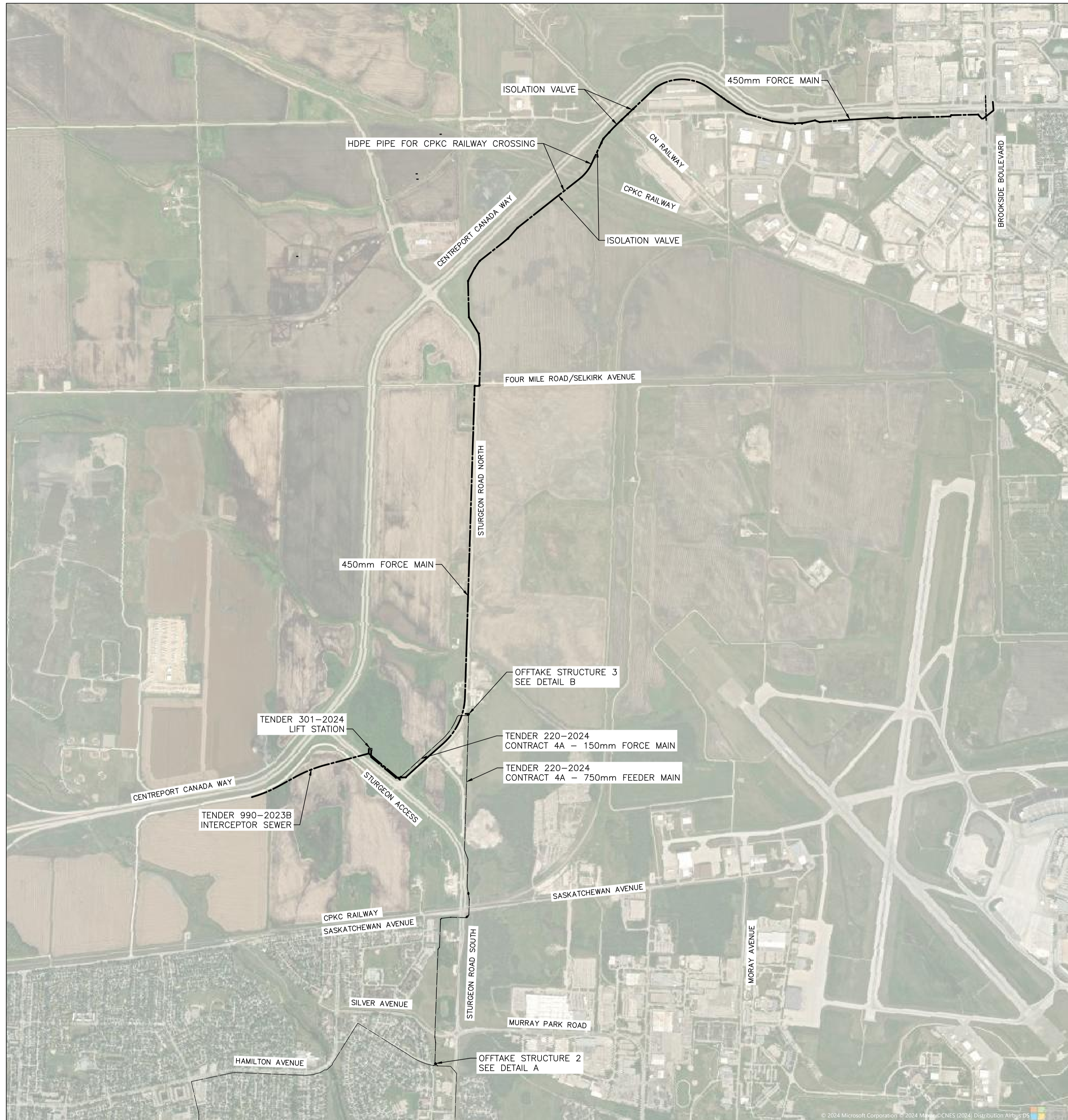
- REMOVE BLIND FLANGE DOWNSTREAM OF VALVE IN OS 2 AS SHOWN IN DETAIL A BELOW AND IN SHEET 2 OF THIS APPENDIX. INSTALL CITY SUPPLIED SPOOL PIECE TO RECONNECT THE 750mm FEEDER MAIN SYSTEM TO THE EXISTING WATER DISTRIBUTION NETWORK.
- COORDINATE WITH CITY STAFF TO OPERATE 750mm BUTTERFLY VALVE IN OS 2.
- SLOWLY FILL THE FEEDER MAIN AND UTILIZE EXISTING BLOW OFF VALVES AT OS 3 AS REQUIRED TO RELEASE ANY ENTRAPPED AIR DURING THE PIPE FILLING OPERATION.
- SET UP TEMPORARY PIPE CONNECTION TO THE 450mm FORCE MAIN NEAR OS 3 FOR THE PURPOSES OF PIGGING AND PRESSURE TESTING THE FORCE MAIN.
 - INSTALL TEMPORARY PIPING ACROSS STURGEON ROAD TO CONNECT TO THE 350mm STAND PIPE AT OS 3 TO THE TEMPORARY FORCE MAIN CONNECTION
 - PROVIDE NECESSARY PROTECTION AND ASPHALT RAMP OVER PIPING WITHIN ROADWAY TO PROTECT PIPING AND MINIMIZE DISRUPTION TO TRAFFIC
 - SIZING OF TEMPORARY PIPING IS AT THE DISCRETION OF THE CONTRACTOR
 - WATER METER WITH BACKFLOW PREVENTER MUST BE INSTALLED ON TEMPORARY PIPING

STAGE 3 - COMMISSIONING FOR CONTRACT 2A FORCE MAIN

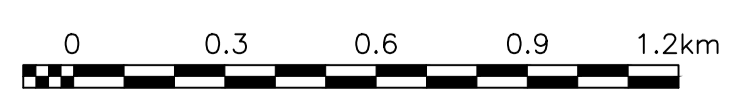
- THE LOCATION OF THE PIG LAUNCH(S) AND THE NUMBER OF PIGS USED IN THE TRAIN IS AT THE DISCRETION OF THE CONTRACTOR. AS PER SPECIFICATION E50, A MINIMUM OF FOUR PIGS MUST BE LAUNCHED IN TOTAL THROUGH ALL SECTIONS OF PIPE.
- FILL FORCE MAIN TO AT LEAST 25% FULL IN FRONT OF PIGS BEFORE LAUNCHING.
- CONTRACTOR TO RETRIEVE PIGS AT MH-01 USING SUITABLE MEANS AND METHODS FOR THE RETRIEVAL.
- AS PER SPECIFICATION E50, THE CONTRACTOR SHALL DECHLORINATE WATER FROM THE PIGGING OPERATION BEFORE DISCHARGING IT INTO DITCHES AT THE SITE. ALTERNATIVELY, THE CONTRACTOR MAY OBTAIN A PERMIT FROM THE WATER AND WASTE DEPARTMENT TO DISCHARGE CHLORINATED WATER DIRECTLY INTO THE CITY'S SEWER SYSTEM.
- ENSURE NO AIR ENTERS THE FORCE MAIN FOLLOWING PIGGING AND PRIOR TO HYDROSTATIC PRESSURE TESTING.
- COMPLETE PRESSURE TESTING IN ACCORDANCE WITH CW 2125 AND E50
 - TESTING SHALL BE COMPLETED IN THE SHORTEST SEGMENTS POSSIBLE (BETWEEN VALVES).
 - CONTRACTOR MAY ELECT TO PRESSURE TEST THE FORCE MAIN IN SEGMENTS AS CONSTRUCTION PROGRESSES OR IN SEGMENTS ONCE ALL THE PIPING IS INSTALLED.
 - 600mm HDPE PIPE FOR THE CPKC RAILWAY CROSSING SHALL BE PRESSURE TESTING INDEPENDENTLY OF THE PVC PIPE SECTIONS.
- ONCE COMMISSIONING IS COMPLETE, REPLACE 300mm LONG SPOOL PIECES WITH PROVISIONAL 750mm BUTTERFLY VALVES IN VALVE CHAMBERS 1 AND 2.
- REPLACE 300mm LONG SPOOL PIECE WITH 750mm BUTTERFLY VALVE IN OS 3.

STAGE 4 - COMMISSIONING FOR CONTRACT 1A LIFT STATION

STAGE 4 TO BE COMPLETED UNDER CONTRACT 1A - LIFT STATION (TENDER 301-2024)



METRIC
 WHOLE NUMBERS INDICATE MILLIMETRES
 DECIMALIZED NUMBERS INDICATE METRES



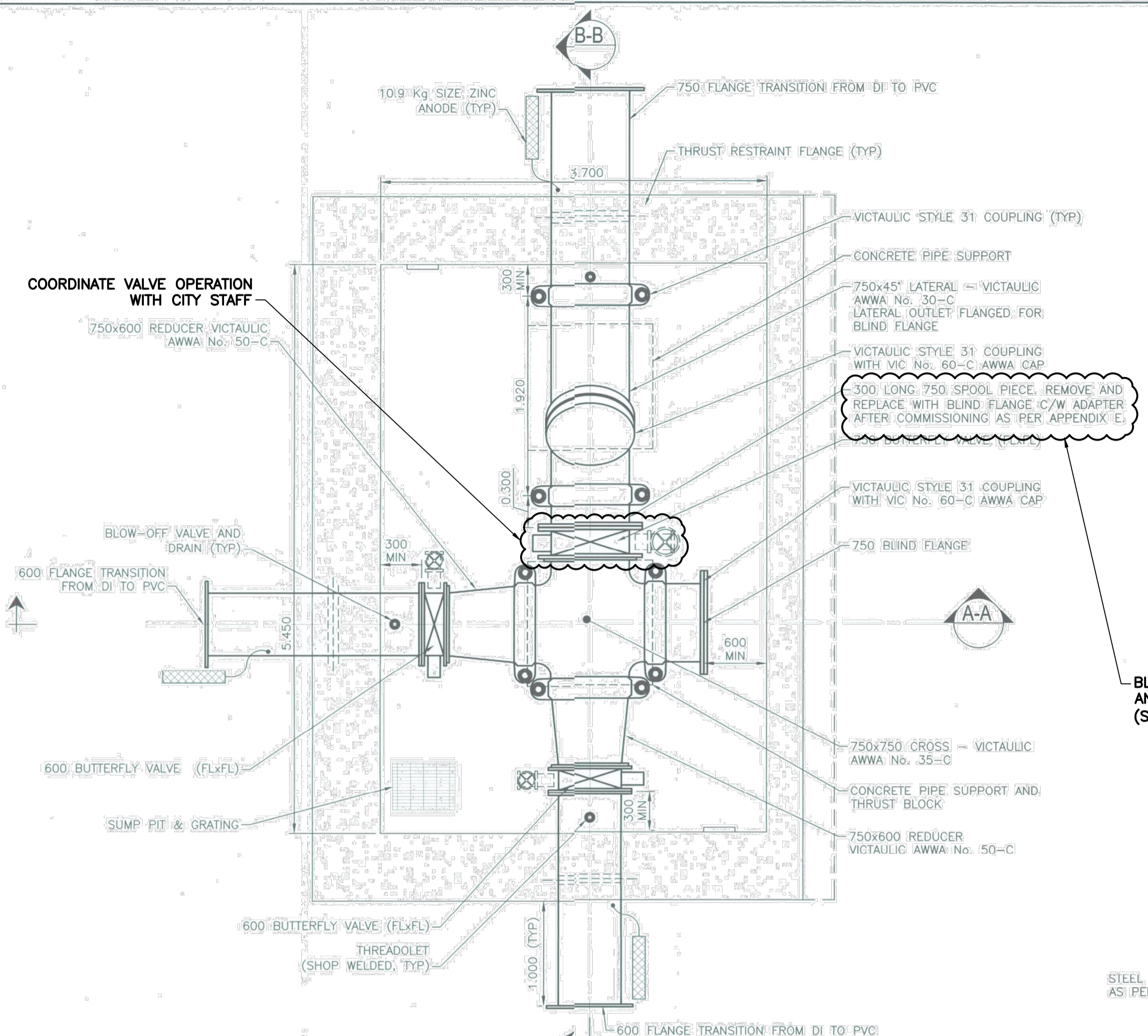
LOCATION APPROVED UNDERGROUND STRUCTURES		VERTICAL DATUM: CGVD28 (HT2.0 Geoid)	
SUPV. U/G STRUCTURES COMMITTEE DATE		HORIZONTAL DATUM: NAD83 (June 1990), Zone 14	
NOTE: LOCATION OF UNDERGROUND STRUCTURES AS SHOWN ARE BASED ON THE BEST INFORMATION AVAILABLE BUT NO GUARANTEE IS GIVEN THAT ALL EXISTING UTILITIES ARE SHOWN OR THAT THE GIVEN LOCATIONS ARE EXACT. CONFIRMATION OF EXISTENCE AND EXACT LOCATION OF ALL SERVICES MUST BE OBTAINED FROM THE INDIVIDUAL UTILITIES BEFORE PROCEEDING WITH CONSTRUCTION.			
NO.	ISSUED FOR TENDER	DATE	BY
0	ISSUED FOR TENDER	24/07/04	
	REVISIONS	DATE (YYYY/MM/DD)	

		ENGINEER'S SEAL	
		CONSULTANT DRAWING NUMBER	
DESIGNED BY	GTH	CHECKED BY	
DRAWN BY	GTH	APPROVED BY	
SCALE:	HORIZONTAL AS NOTED	RELEASED FOR CONSTRUCTION	
DATE	2024 07 04	DATE	YYYY/MM/DD
PLOT DATE:	2024 07 04		

THE CITY OF WINNIPEG
 WATER AND WASTE DEPARTMENT
 ENGINEERING DIVISION
 CENTREPORT SOUTH REGIONAL WATER AND WASTEWATER
 SERVICING - PHASE 1A CONTRACT 2A - FORCE MAIN
COMMISSIONING PLAN
 CONCEPTUAL SEQUENCING PLAN

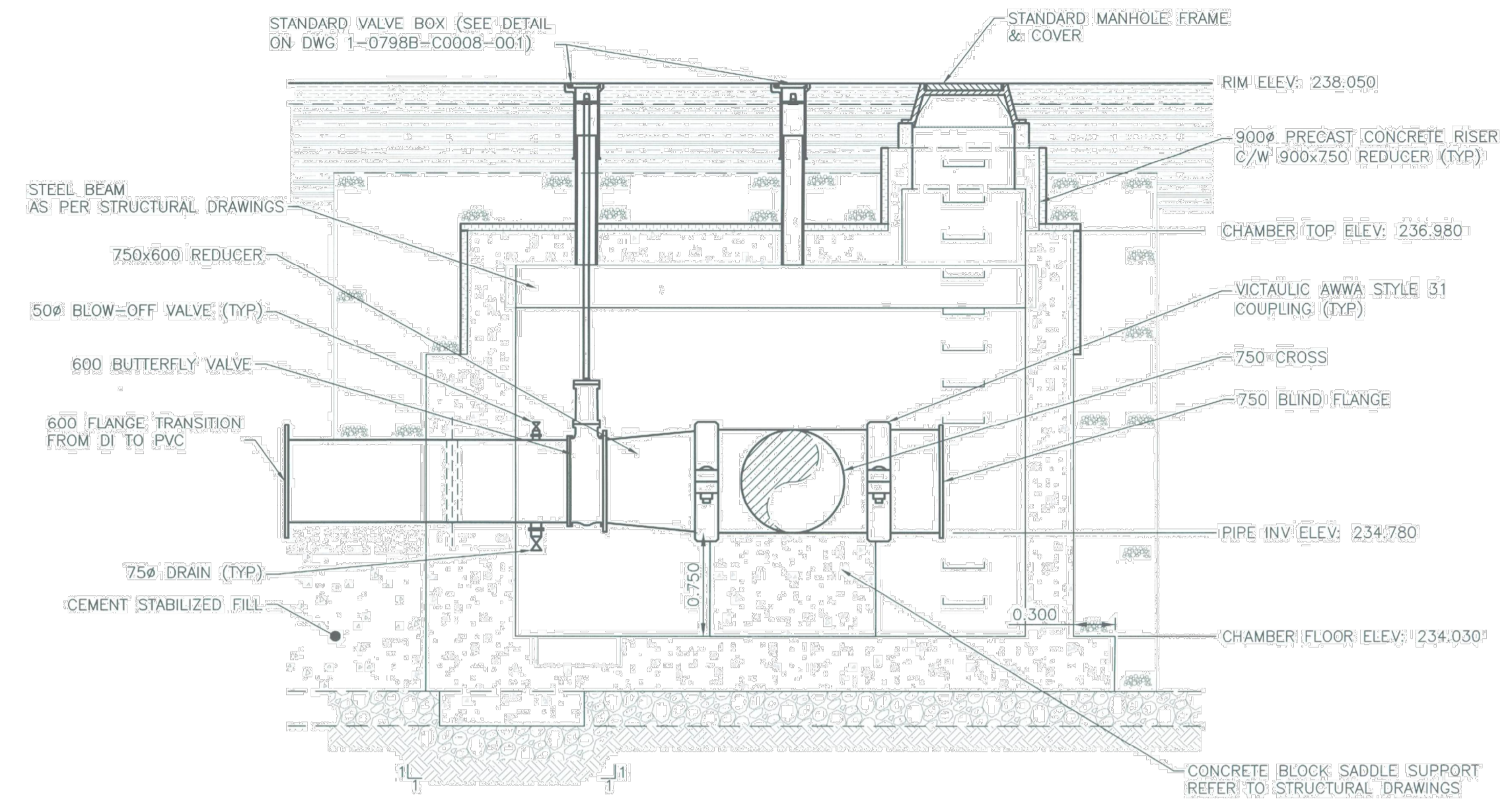
SHEET 1 OF 3
 CITY DRAWING NUMBER
APPENDIX F

COORDINATE VALVE OPERATION WITH CITY STAFF

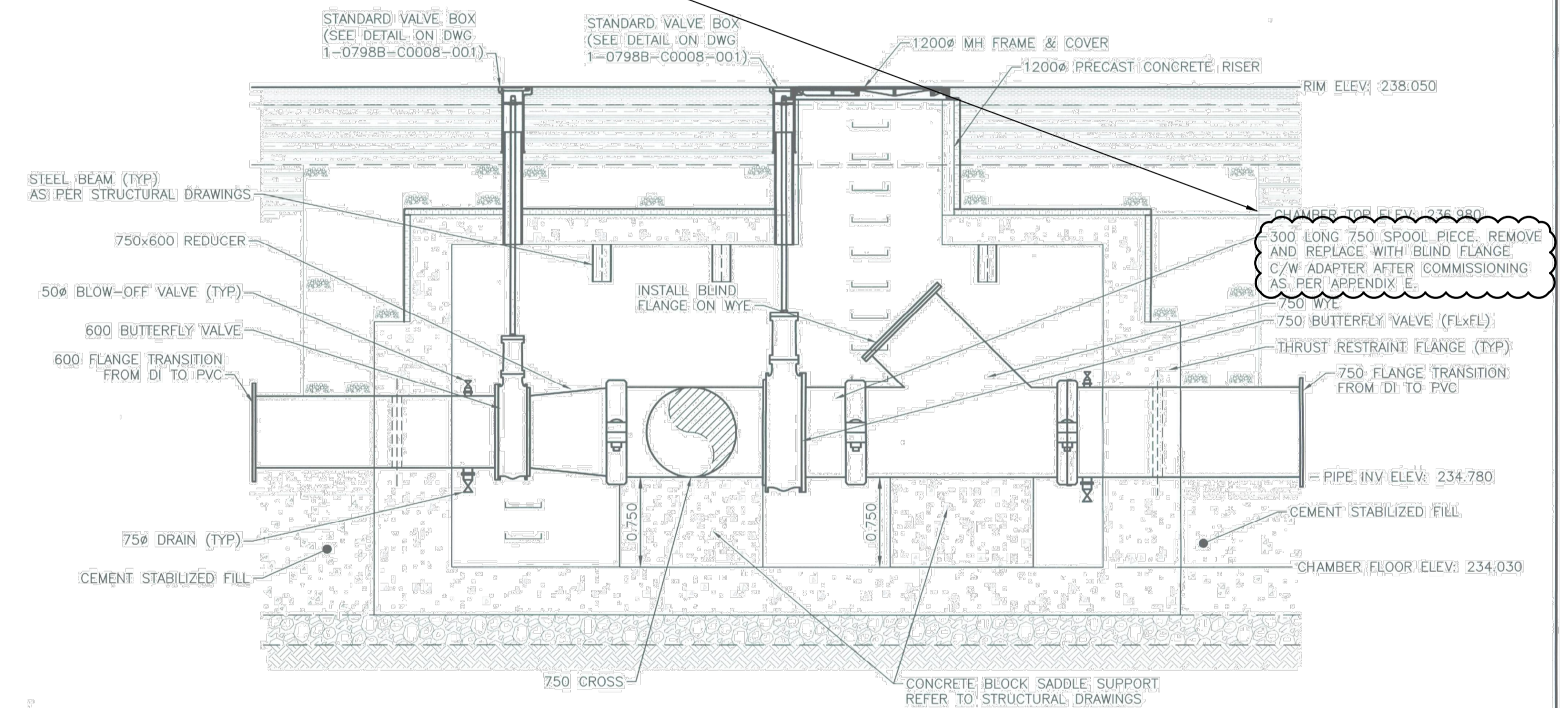


OFFTAKE STRUCTURE 2 LAYOUT DETAIL (1:30)

- NOTES:**
- ALL CHAMBER PIPING TO BE CEMENT MORTAR LINED DUCTILE IRON IN ACCORDANCE WITH AWWA C151 AND AWWA C104.
 - ALL VALVES TO BE AWWA C210 EPOXY COATED.
 - REFER TO STRUCTURAL DRAWINGS FOR CHAMBER OPENINGS, CONCRETE STRUCTURES AND STEEL DESIGN.
 - DIMENSIONS AND LAYOUT IS APPROXIMATE ONLY. ALL DIMENSIONS AND LAYOUT MUST BE CONFIRMED BY THE CONTRACTOR BEFORE COMMENCING WORK.
 - SHOP DRAWINGS FOR CONCRETE STRUCTURES SHALL BE COORDINATED WITH ALL MECHANICAL SHOP DRAWINGS TO ENSURE PROPER FIT AND LOCATION.
 - SEE DRAWING 1-0798B-C0008-001 FOR BLOW OFF ASSEMBLY AND DRAIN ASSEMBLY DETAIL.



OFFTAKE STRUCTURE 2 SECTION A-A (1:30)



OFFTAKE STRUCTURE 2 SECTION B-B (1:30)

ISSUED FOR TENDER
NOT TO BE USED FOR CONSTRUCTION

FOR INDEX SEE
1-0798F-D002-001

METRIC
WHOLE NUMBERS INDICATE MILLIMETRES
DECIMAL NUMBERS INDICATE METRES



WARNING
IF POWER EQUIPMENT OR EXPLOSIVES ARE TO BE USED FOR EXCAVATION ON THIS PROJECT THE CONTRACTOR MUST:
1) NOTIFY THE GAS COMPANY OF THE PROPOSED LOCATION OF EXCAVATION.
2) TAKE PRECAUTION TO AVOID DAMAGE TO GAS COMPANY INSTALLATIONS.
(SEE PROVINCIAL REGULATION 210/72 FOR DETAILS)

LOCATION APPROVED UNDERGROUND STRUCTURES
SUPV. U/G STRUCTURES COMMITTEE DATE:
NOTE:
LOCATION OF UNDERGROUND STRUCTURES AS SHOWN ARE BASED ON THE BEST INFORMATION AVAILABLE BUT NO GUARANTEE IS GIVEN THAT ALL EXISTING UTILITIES ARE SHOWN OR THAT THE GIVEN LOCATIONS ARE EXACT. CONFIRMATION OF EXISTENCE AND EXACT LOCATION OF ALL UTILITIES MUST BE OBTAINED FROM THE INDIVIDUAL UTILITIES BEFORE PROCEEDING WITH CONSTRUCTION.

VERTICAL DATUM: CGVD28 (HT2.0 Geoid)	
HORIZONTAL DATUM: NAD83 (June 1990), Zone 14	
DESIGNED BY: GTH	CHECKED BY: RBO
DRAWN BY: GTH	APPROVED BY: RBO
SCALE: HORIZONTAL AS NOTED	RELEASED FOR CONSTRUCTION
DATE: 2024 05 16	DATE: YYYY/MM/DD
PLOT DATE: 2024-05-16	

KGS GROUP

DESIGNED BY: GTH
CHECKED BY: RBO
DRAWN BY: GTH
APPROVED BY: RBO
SCALE: HORIZONTAL AS NOTED
DATE: 2024 05 16
PLOT DATE: 2024-05-16



THE CITY OF WINNIPEG
WATER AND WASTE DEPARTMENT
ENGINEERING DIVISION

CENTREPORT SOUTH REGIONAL WATER AND WASTEWATER SERVICING - PHASE 1A CONTRACT 4A - FEEDER MAIN
OFFTAKE STRUCTURE 2 DETAILS

SHEET 24 OF 34
CITY DRAWING NUMBER: 1-0798F-C0018-001

LOCATION APPROVED UNDERGROUND STRUCTURES
SUPV. U/G STRUCTURES COMMITTEE DATE:
NOTE:
LOCATION OF UNDERGROUND STRUCTURES AS SHOWN ARE BASED ON THE BEST INFORMATION AVAILABLE BUT NO GUARANTEE IS GIVEN THAT ALL EXISTING UTILITIES ARE SHOWN OR THAT THE GIVEN LOCATIONS ARE EXACT. CONFIRMATION OF EXISTENCE AND EXACT LOCATION OF ALL UTILITIES MUST BE OBTAINED FROM THE INDIVIDUAL UTILITIES BEFORE PROCEEDING WITH CONSTRUCTION.

VERTICAL DATUM: CGVD28 (HT2.0 Geoid)	
HORIZONTAL DATUM: NAD83 (June 1990), Zone 14	
DESIGNED BY: GTH	CHECKED BY: RBO
DRAWN BY: GTH	APPROVED BY: RBO
SCALE: HORIZONTAL AS NOTED	RELEASED FOR CONSTRUCTION
DATE: 2024 07 04	DATE: YYYY/MM/DD
PLOT DATE: 2024 07 04	

KGS GROUP

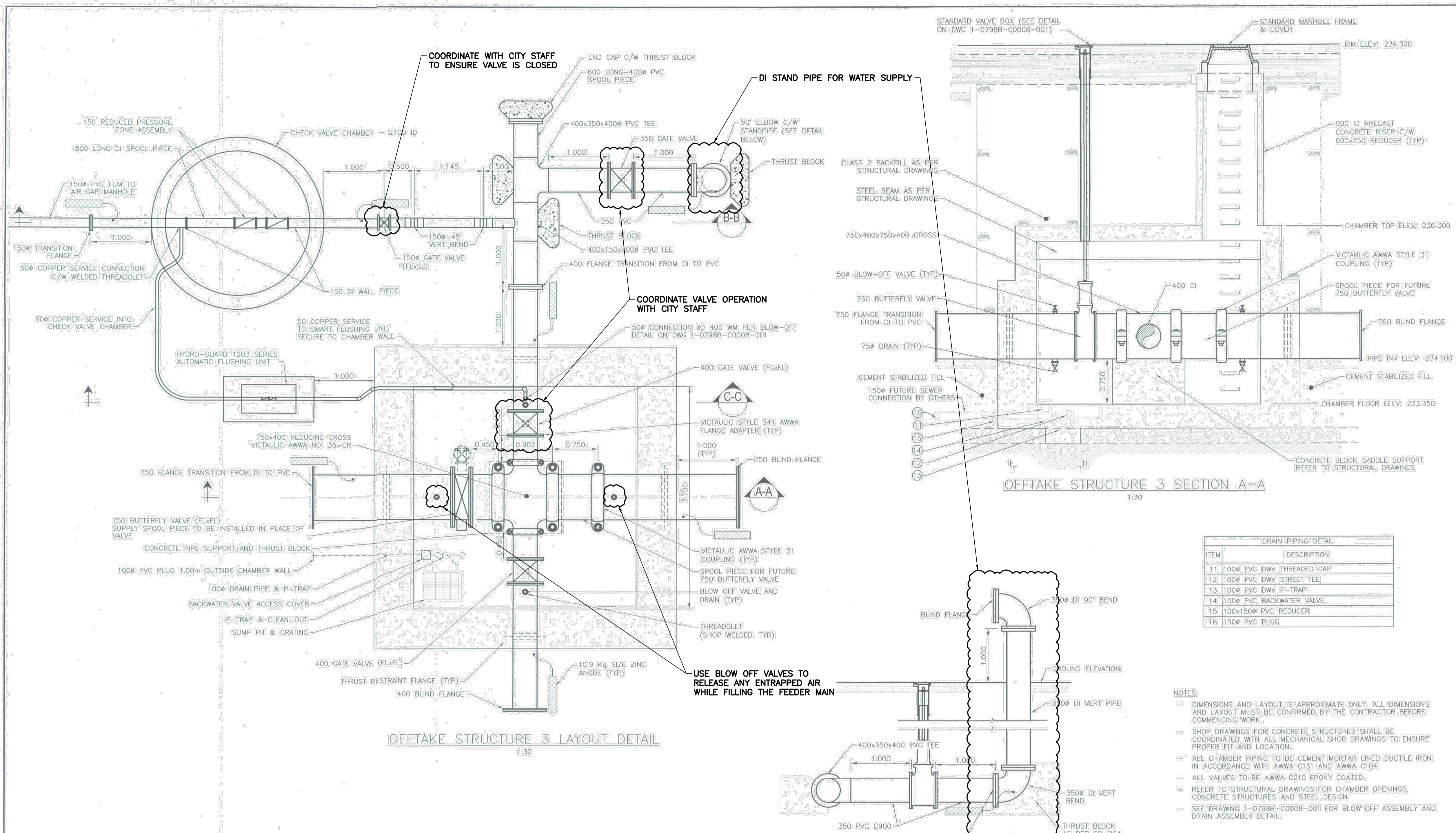
DESIGNED BY: GTH
CHECKED BY: RBO
DRAWN BY: GTH
APPROVED BY: RBO
SCALE: HORIZONTAL AS NOTED
DATE: 2024 07 04
PLOT DATE: 2024 07 04

ENGINEER'S SEAL
CONSULTANT DRAWING NUMBER: APPENDIX F

THE CITY OF WINNIPEG
WATER AND WASTE DEPARTMENT
ENGINEERING DIVISION

CENTREPORT SOUTH REGIONAL WATER AND WASTEWATER SERVICING - PHASE 1A CONTRACT 2A - FORCE MAIN
COMMISSIONING PLAN OFFTAKE STRUCTURE 2 WORKS

SHEET 2 OF 3
CITY DRAWING NUMBER: APPENDIX F



DRAIN PIPING DETAIL	
ITEM	DESCRIPTION
11	100# PVC DWV THREADED CAP
12	100# PVC DWV STREET TEE
13	100# PVC DWV P-TRAP
14	100# PVC BACKWATER VALVE
15	100x150# PVC REDUCER
16	150# PVC PLUG

- NOTES:**
- 1. DIMENSIONS AND LAYOUT IS APPROXIMATE ONLY. ALL DIMENSIONS AND LAYOUT MUST BE CONFIRMED BY THE CONTRACTOR BEFORE COMMENCING WORK.
 - 2. SHOP DRAWINGS FOR CONCRETE STRUCTURES SHALL BE COORDINATED WITH ALL MECHANICAL SHOP DRAWINGS TO ENSURE PROPER FIT AND LOCATION.
 - 3. ALL CHAMBER PIPING TO BE CEMENT MORTAR LINED DUCTILE IRON IN ACCORDANCE WITH AWWA C151 AND AWWA C104.
 - 4. ALL VALVES TO BE AWWA C210 EPOXY COATED.
 - 5. REFER TO STRUCTURAL DRAWINGS FOR CHAMBER OPENINGS, CONCRETE STRUCTURES AND STEEL DESIGN.
 - 6. SEE DRAWING 1-0798B-C0008-001 FOR BLOW OFF ASSEMBLY AND DRAIN ASSEMBLY DETAIL.

ISSUED FOR TENDER
NOT TO BE USED FOR CONSTRUCTION

FOR INDEX SEE
1-0798F-D002-001

METRIC
WHOLE NUMBERS INDICATE MILLIMETRES
DECIMALIZED NUMBERS INDICATE METRES

**ENGINEERS
GEOSCIENTISTS
(MANITOBA)**
Certificate of Authorization
KGS Group
No. 245

WARNING
IF POWER EQUIPMENT OR EXPLOSIVES ARE TO BE USED FOR EXCAVATION ON THIS PROJECT THE CONTRACTOR MUST:
1) NOTIFY THE GAS COMPANY OF THE PROPOSED LOCATION OF EXCAVATION.
2) TAKE PRECAUTION TO AVOID DAMAGE TO GAS COMPANY INSTALLATIONS.
(SEE PROVINCIAL REGULATION 219/72 FOR DETAILS)

**LOCATION APPROVED
UNDERGROUND STRUCTURES**
SUPV. U/G STRUCTURES COMMITTEE DATE:
NOTE:
LOCATION OF UNDERGROUND STRUCTURES AS SHOWN ARE BASED ON THE BEST INFORMATION AVAILABLE BUT NO GUARANTEE IS GIVEN THAT ALL EXISTING UTILITIES ARE SHOWN OR THAT THE GIVEN LOCATIONS ARE EXACT. CONFIRMATION OF EXISTENCE AND EXACT LOCATION OF ALL SERVICES MUST BE OBTAINED FROM THE INDIVIDUAL UTILITIES BEFORE PROCEEDING WITH CONSTRUCTION.

VERTICAL DATUM: CGVD28 (HT2.0 Geoid)	
HORIZONTAL DATUM: NAD83 (June 1980), Zone 14	
NO.	REVISIONS
2	ISSUED WITH ADDENDUM 4 24/05/16 GTH
1	ISSUED WITH ADDENDUM 2 24/05/13 GTH
0	ISSUED FOR TENDER 24/04/26 GTH

KGS GROUP
DESIGNED BY: GTH
DRAWN BY: GTH
SCALE: HORIZONTAL AS NOTED
DATE: 2024 05 16
PLOT DATE: 2024 05 16

ENGINEER'S SEAL
G. HEINRICHS
Member
38162
CONSULTANT DRAWING NUMBER:
C-4A-122

THE CITY OF WINNIPEG
WATER AND WASTE DEPARTMENT
ENGINEERING DIVISION
CENTREPORT SOUTH REGIONAL WATER AND WASTEWATER SERVICING - PHASE 1A CONTRACT 4A - FEEDER MAIN
OFFTAKE STRUCTURE 3 DETAILS
SHEET 25 OF 34
CITY DRAWING NUMBER
1-0798F-C0019-001

**LOCATION APPROVED
UNDERGROUND STRUCTURES**
SUPV. U/G STRUCTURES COMMITTEE DATE:
NOTE:
LOCATION OF UNDERGROUND STRUCTURES AS SHOWN ARE BASED ON THE BEST INFORMATION AVAILABLE BUT NO GUARANTEE IS GIVEN THAT ALL EXISTING UTILITIES ARE SHOWN OR THAT THE GIVEN LOCATIONS ARE EXACT. CONFIRMATION OF EXISTENCE AND EXACT LOCATION OF ALL SERVICES MUST BE OBTAINED FROM THE INDIVIDUAL UTILITIES BEFORE PROCEEDING WITH CONSTRUCTION.

VERTICAL DATUM: CGVD28 (HT2.0 Geoid)	
HORIZONTAL DATUM: NAD83 (June 1990), Zone 14	
NO.	REVISIONS
0	ISSUED FOR TENDER 24/07/04

KGS GROUP
DESIGNED BY: GTH
DRAWN BY: GTH
SCALE: HORIZONTAL AS NOTED
DATE: 2024 07 04
PLOT DATE: 2024 07 04

ENGINEER'S SEAL
APPENDIX F

THE CITY OF WINNIPEG
WATER AND WASTE DEPARTMENT
ENGINEERING DIVISION
CENTREPORT SOUTH REGIONAL WATER AND WASTEWATER SERVICING - PHASE 1A CONTRACT 2A - FORCE MAIN
**COMMISSIONING PLAN
OFFTAKE STRUCTURE 3 WORKS**
SHEET 3 OF 3
CITY DRAWING NUMBER
APPENDIX F