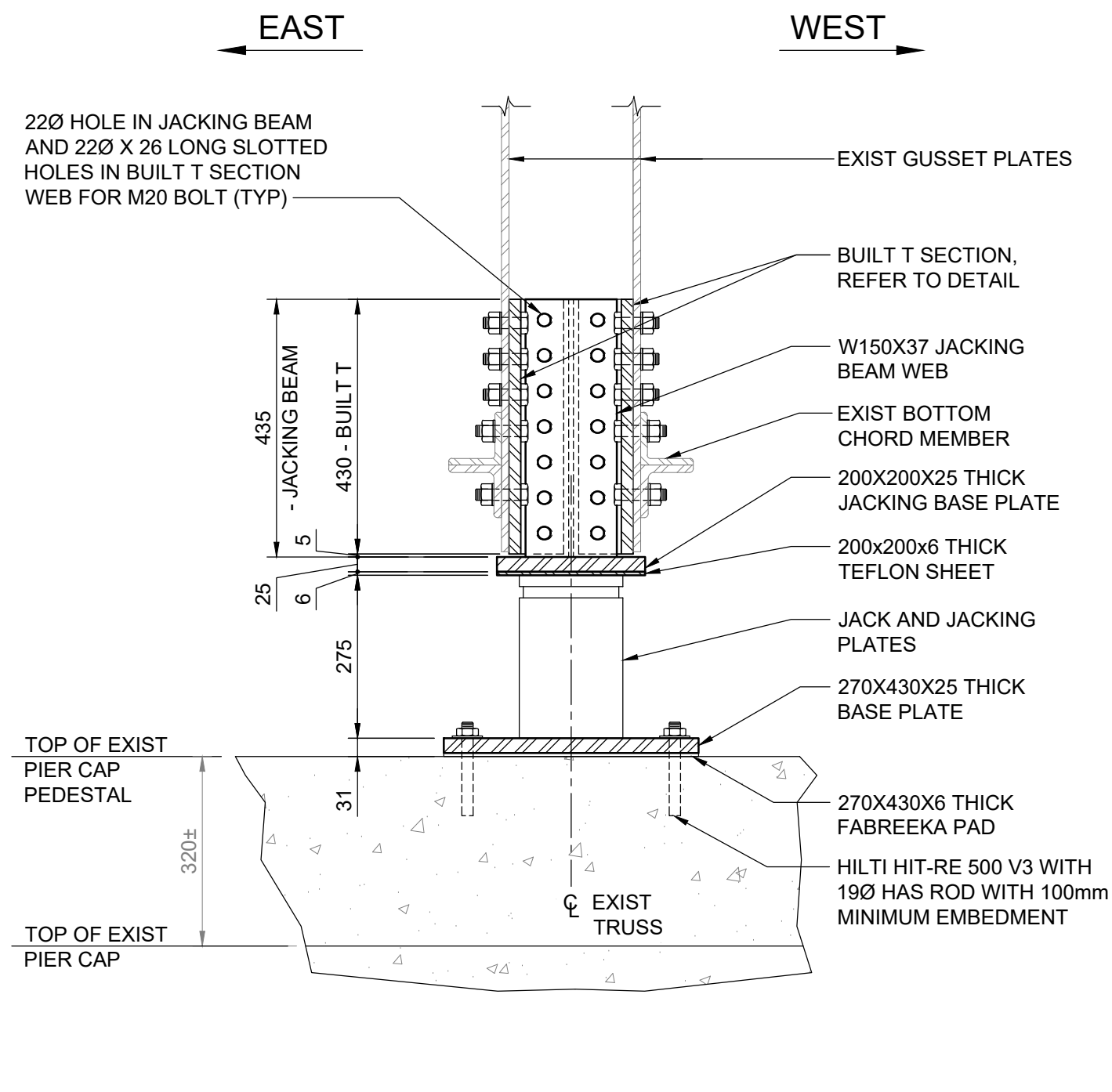
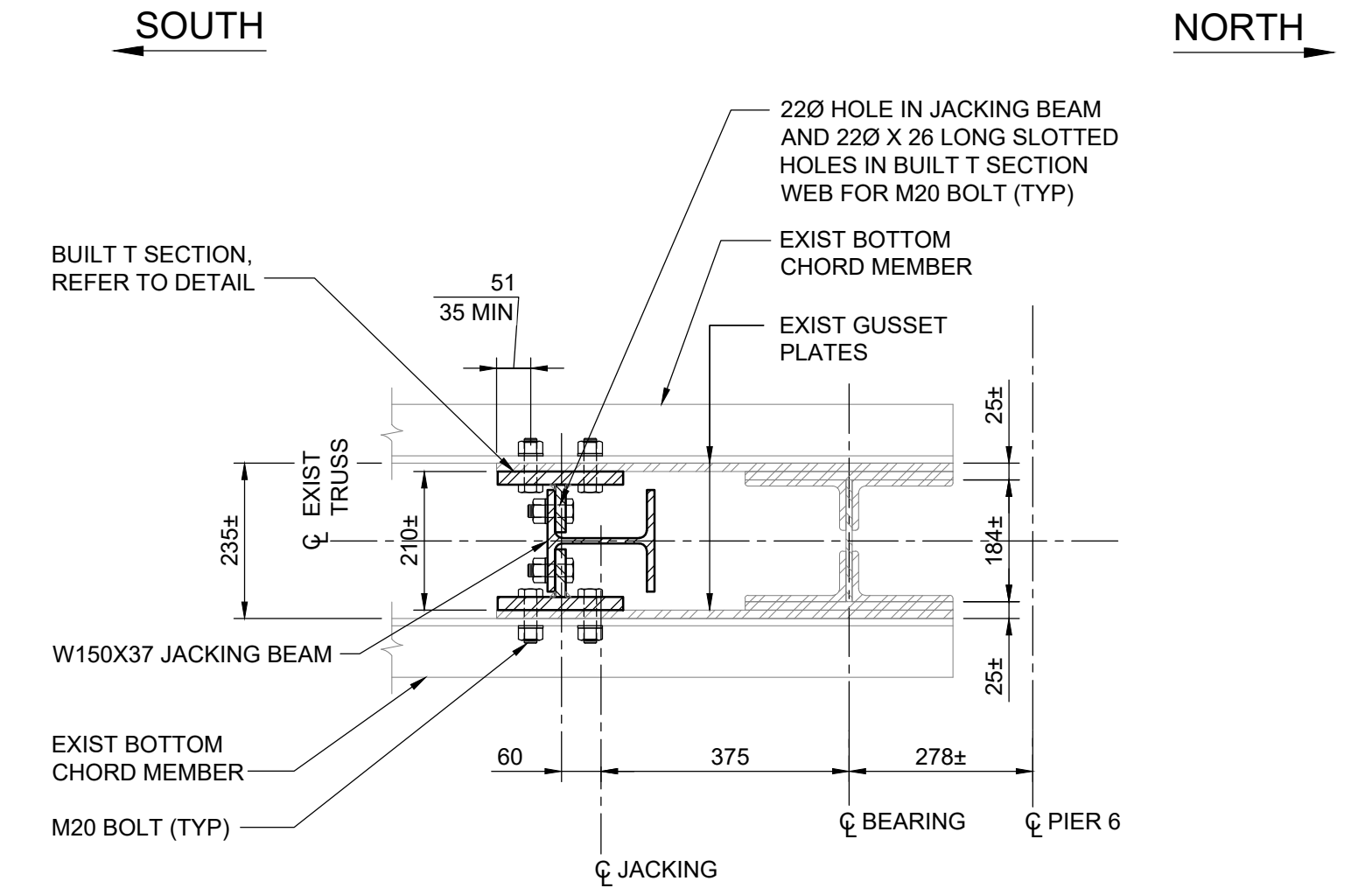


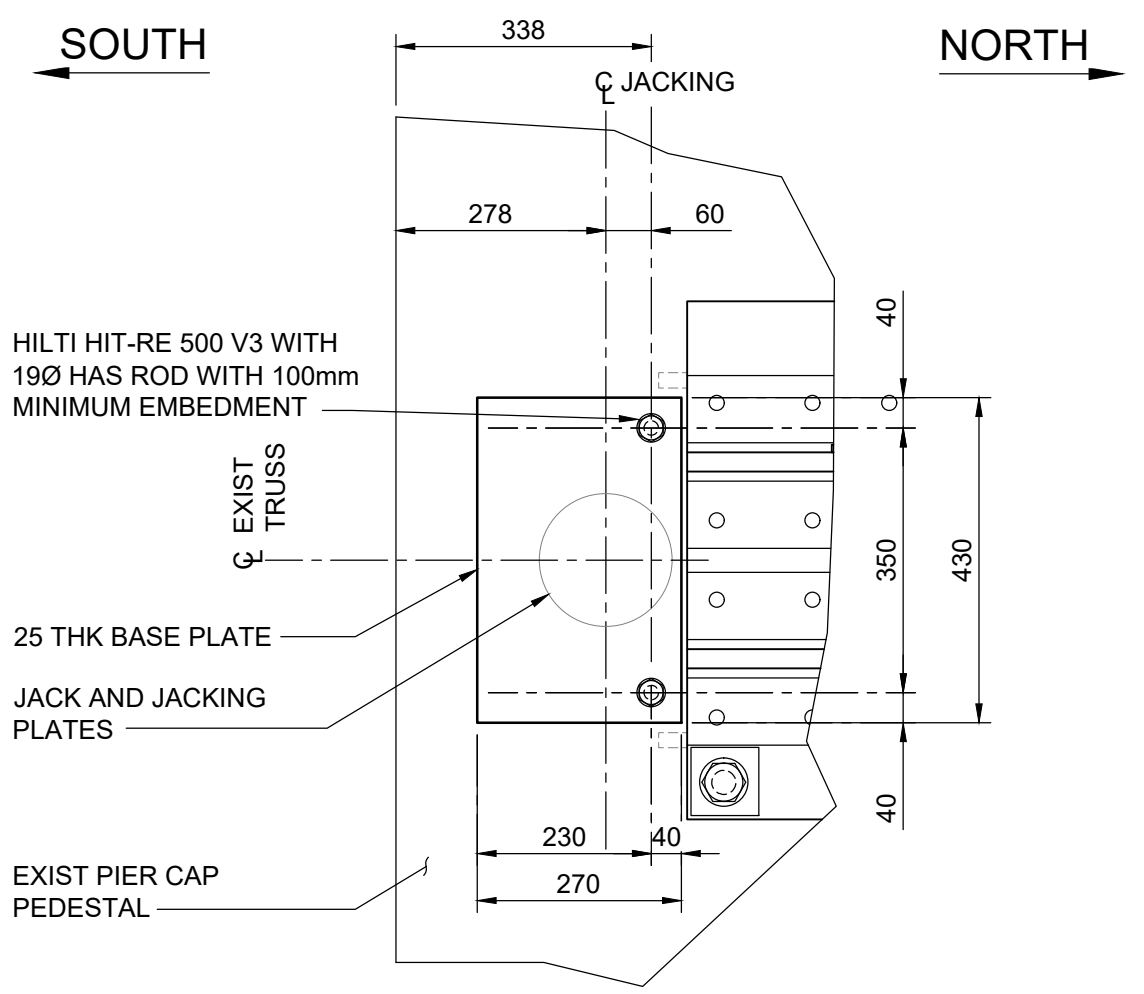
**1 TYPE A - JACKING DETAIL**  
1:10



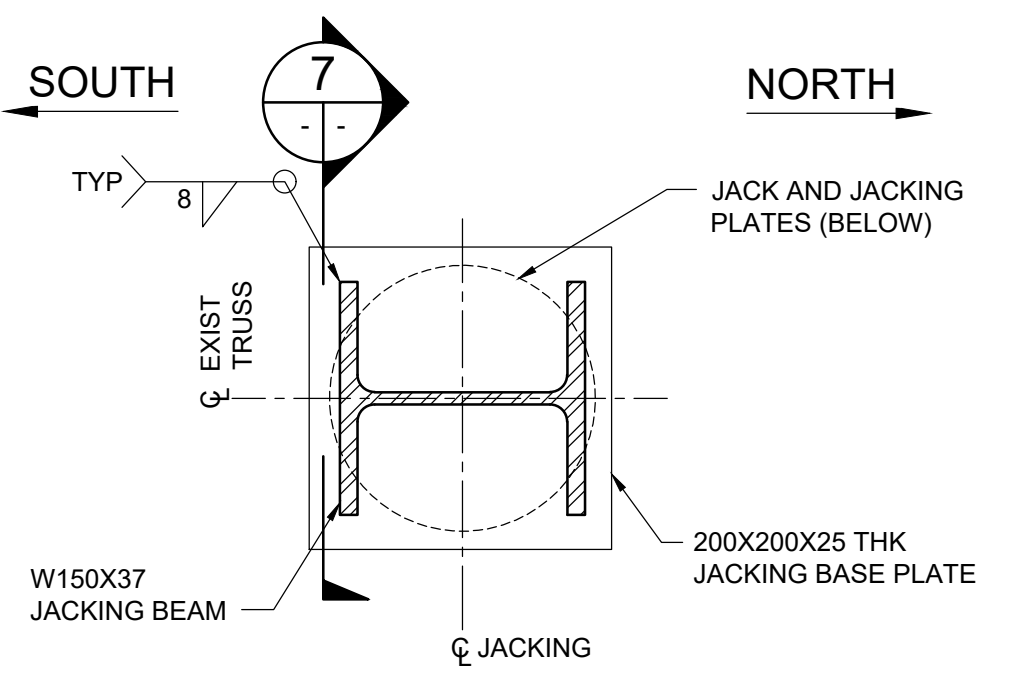
**2 TYPE A - SECTION**  
1:10



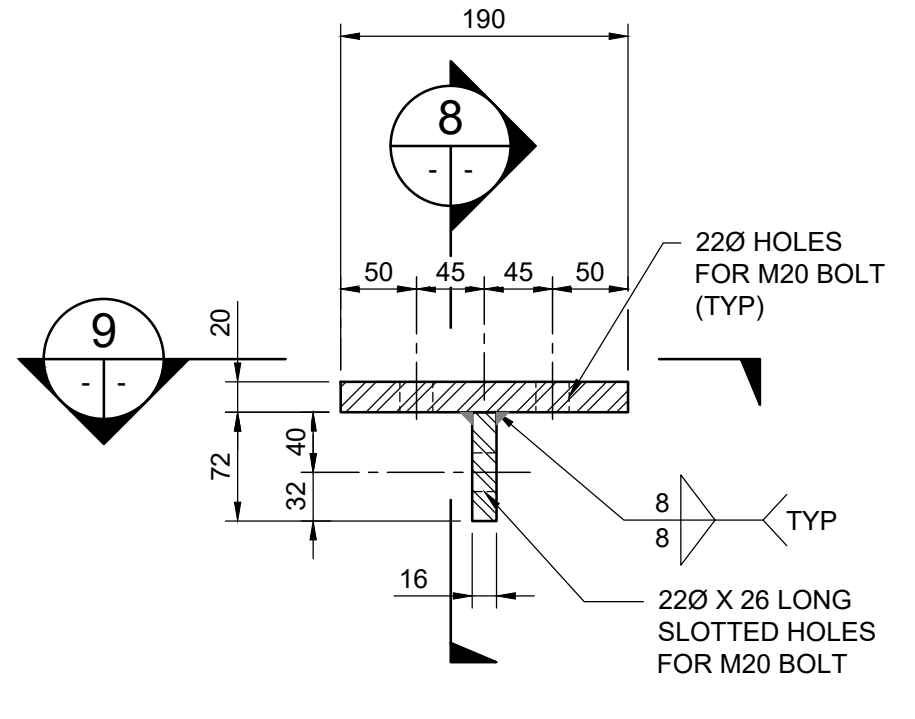
**3 TYPE A - SECTION**  
1:10  
EXIST BEARING BELOW NOT SHOWN FOR CLARITY



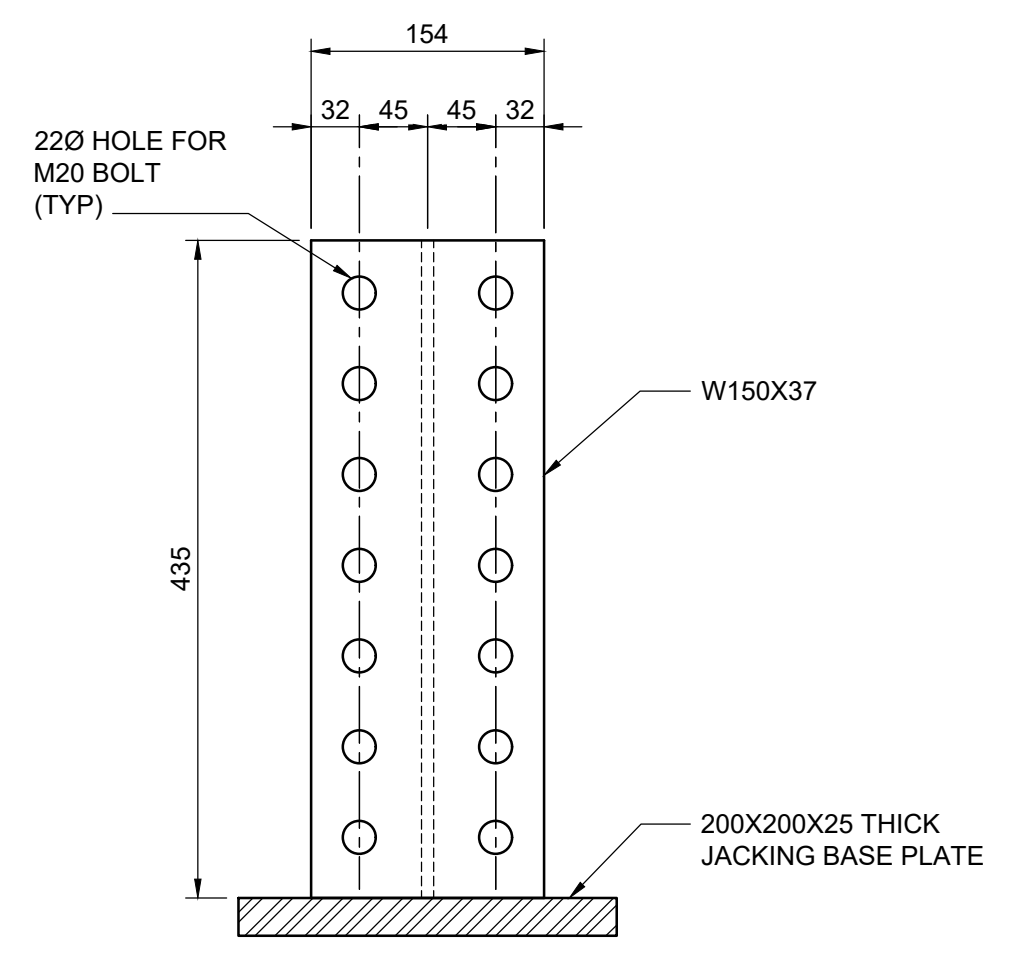
**4 TYPE A - SECTION**  
1:10



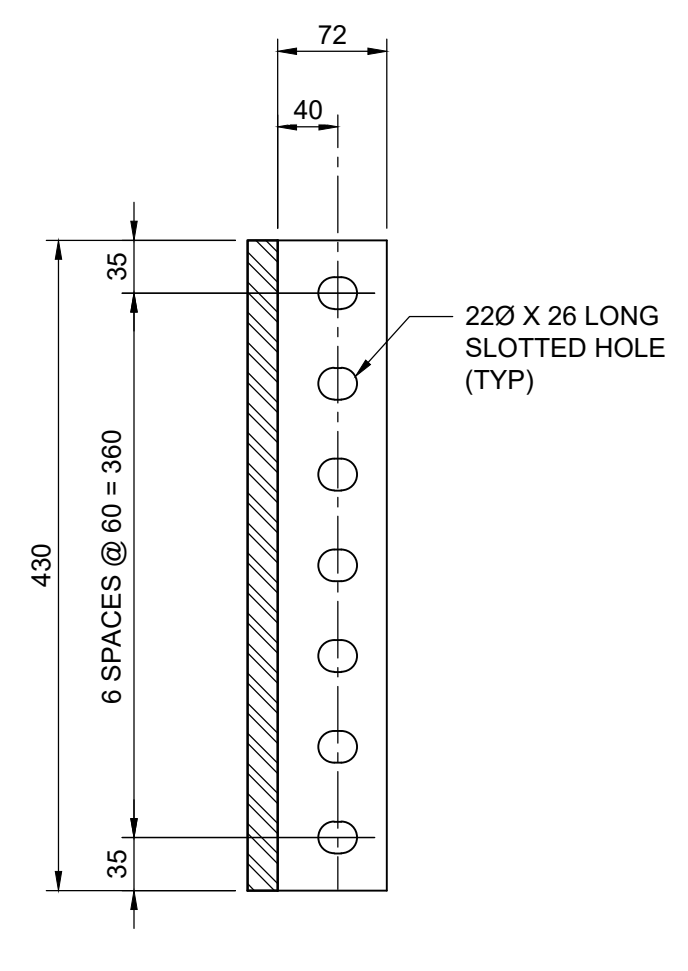
**5 TYPE A - SECTION**  
1:5



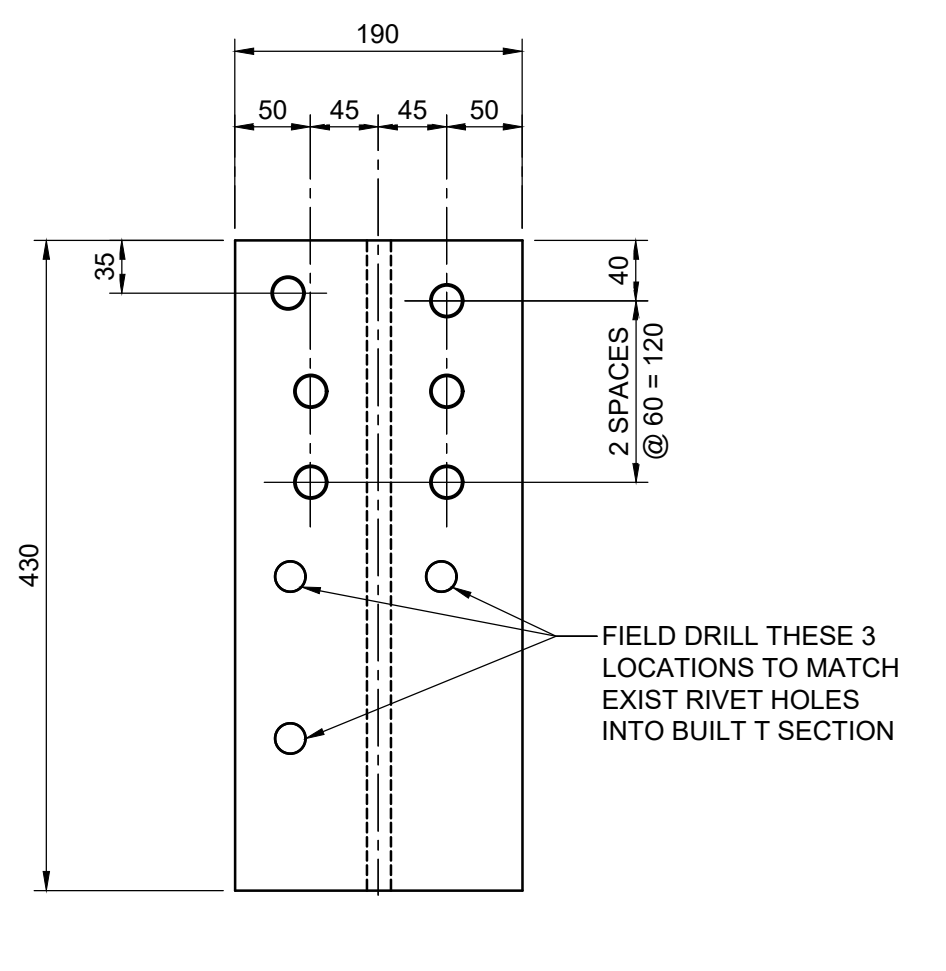
**6 BUILT T - DETAIL**  
1:5



**7 JACKING BEAM FLANGE - DETAIL**  
1:5



**8 BUILT T - DETAIL**  
1:5



**9 BUILT T - DETAIL**  
1:5

**NOTE:**  
EXIST PIER 6 CONCRETE PEDESTAL REINFORCEMENT SHALL BE SCANNED AND VERIFIED PRIOR TO JACKING SPAN 18 TRUSS.

**DISCLAIMER**  
THE PROPOSED DESIGN COMPLETED BY TETRA TECH CANADA INC IS BASED ON COMPETENT STEEL AND CONCRETE MEMBERS AND CONNECTIONS WITH LIGHT CORROSION. TETRA TECH CANADA INC CANNOT GUARANTEE THAT THERE ARE ADDITIONAL STRUCTURAL STEEL OR CONCRETE DEFECTS, NOT EVIDENT DURING TETRA TECH CANADA INC 2023 INSPECTION, THAT MAY IMPACT THE DESIGNED BEARING REPLACEMENT. THE DESIGNED BEARING REPLACEMENT DOES NOT ENSURE PUBLIC SAFETY, RATHER PROVIDES SOME LEVEL OF COMFORT THAT THE PRATT TRUSS EXPANSION AND CONTRACTION IS NOT OBSTRUCTED.



- JACKING NOTES:**
- REFER TO SHEET 5 FOR JACKING NOTES.
  - GRIND AND LEVEL CONCRETE SURFACE PRIOR TO INSTALLING FABREEKA PAD AND JACKING BASE PLATE.

B.M. ELEV.		TETRA TECH		ORIGINAL DRAWING REVISION "00" SEALED BY S.Y.I. AWAD 24.05.14	
DESIGNED BY	SA	REVIEWED BY	KA		
DRAWN BY	EV	APPROVED BY	MJB		
SCALE:	AS NOTED	ACCEPTED BY	DATE		
DATE	24.05.14	ORIGINAL SIGNED			
NO.	REVISIONS	DATE	BY	CONSULTANT DRAWING NO. 734-230070400-DWG-S1106	

**THE CITY OF WINNIPEG**  
PUBLIC WORKS DEPARTMENT

ARLINGTON BRIDGE REHABILITATION BEARING REPLACEMENT

PIER 6 TYPE A JACKING DETAILS

CITY DRAWING NUMBER B106-24-06  
SHEET 6 OF 6