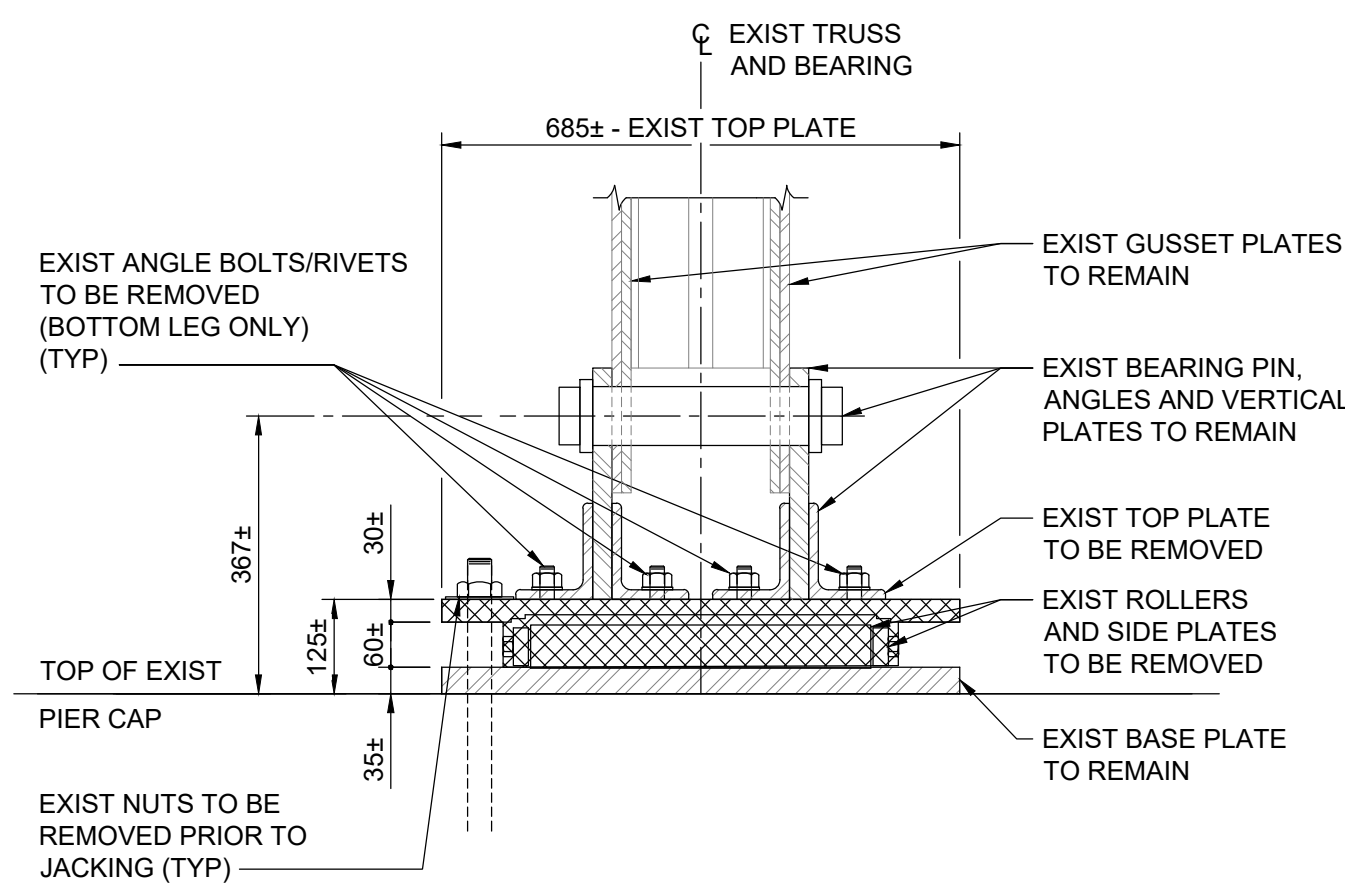
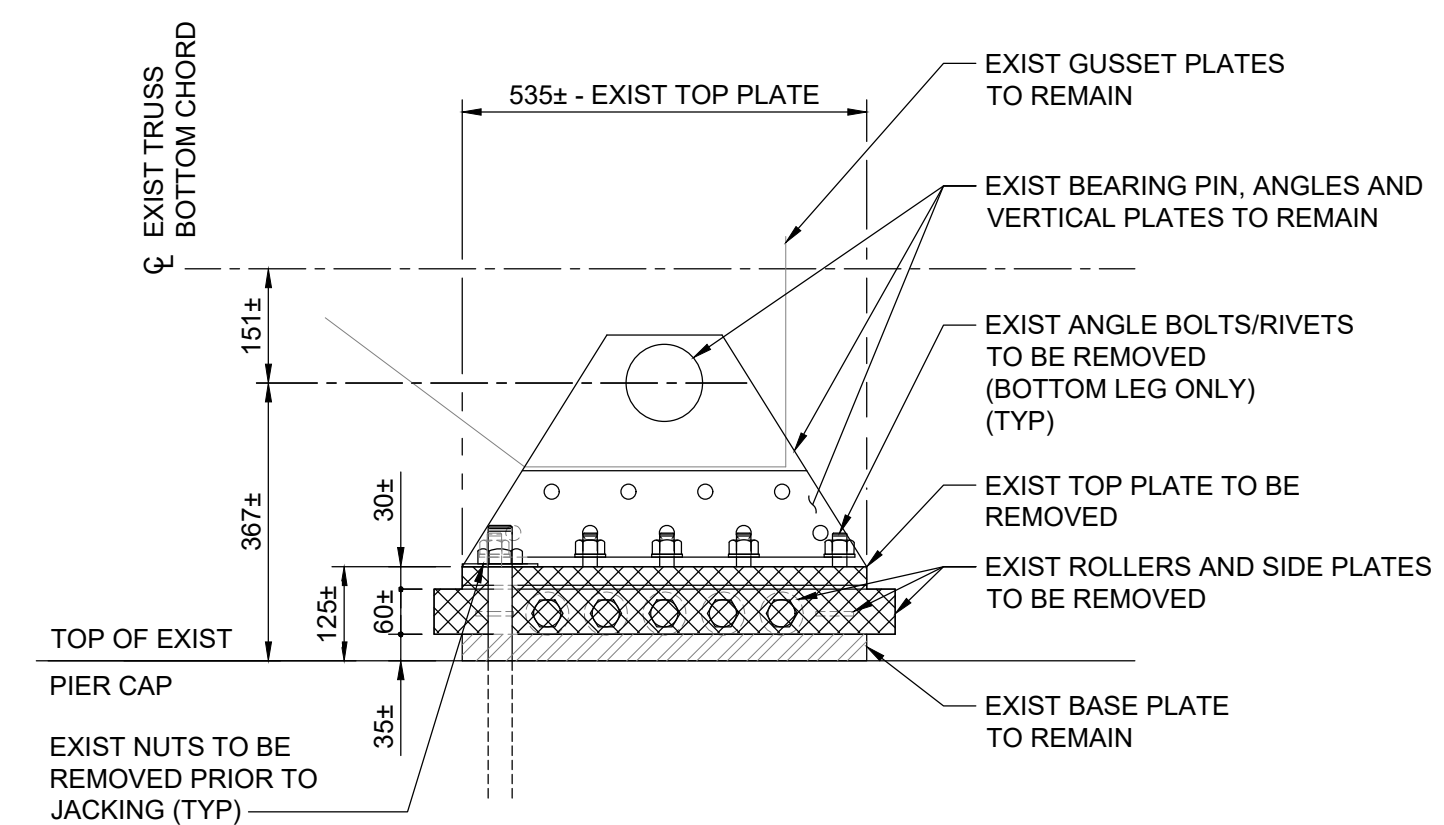


EXISTING TYPE A BEARING - PLAN
1:10

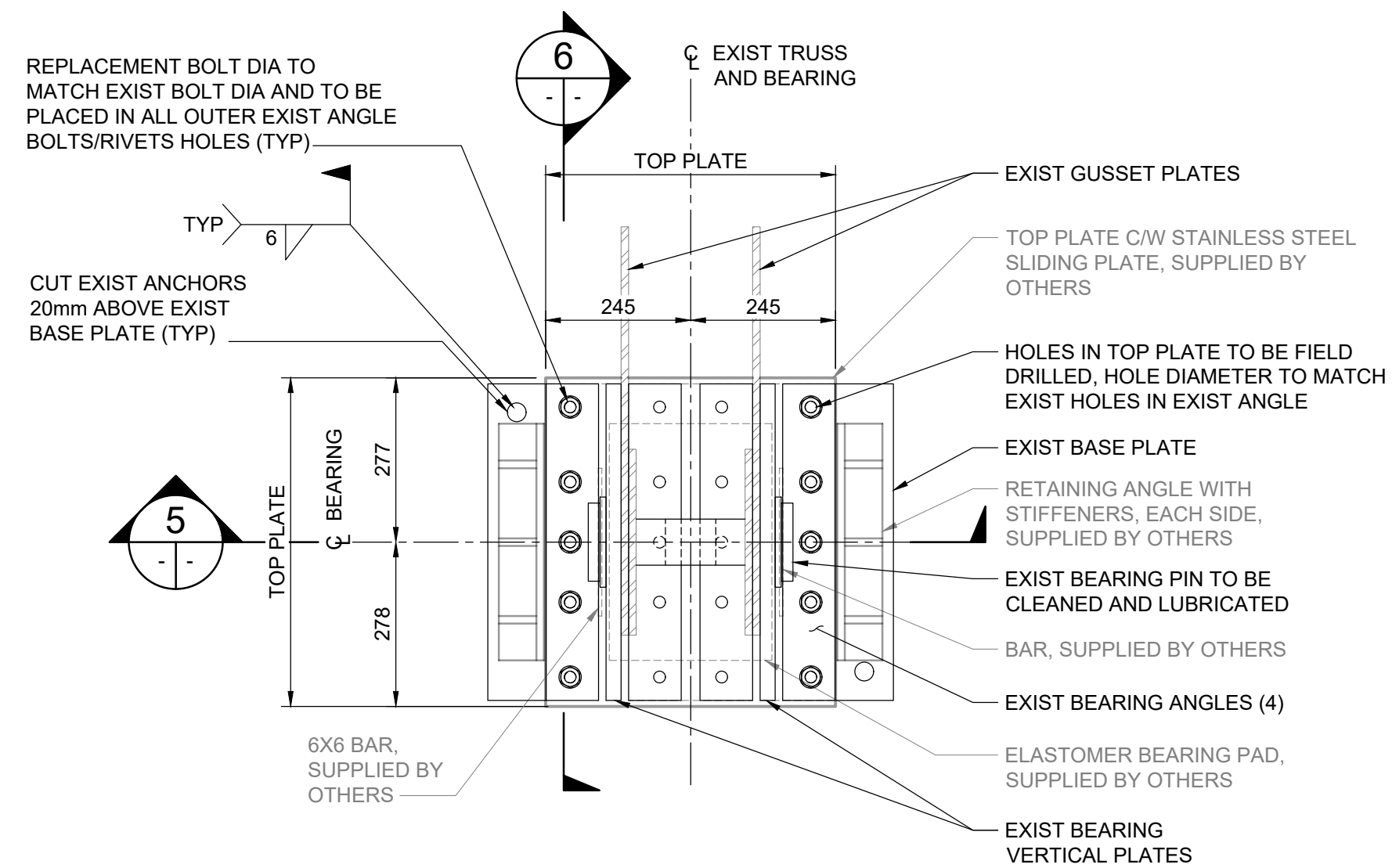
EXISTING BEARING ANCHORS SHOWN COULD VARY FROM ONE TYPE A BEARING LOCATION TO ANOTHER. EXISTING NUTS TO BE REMOVED TYPICALLY.



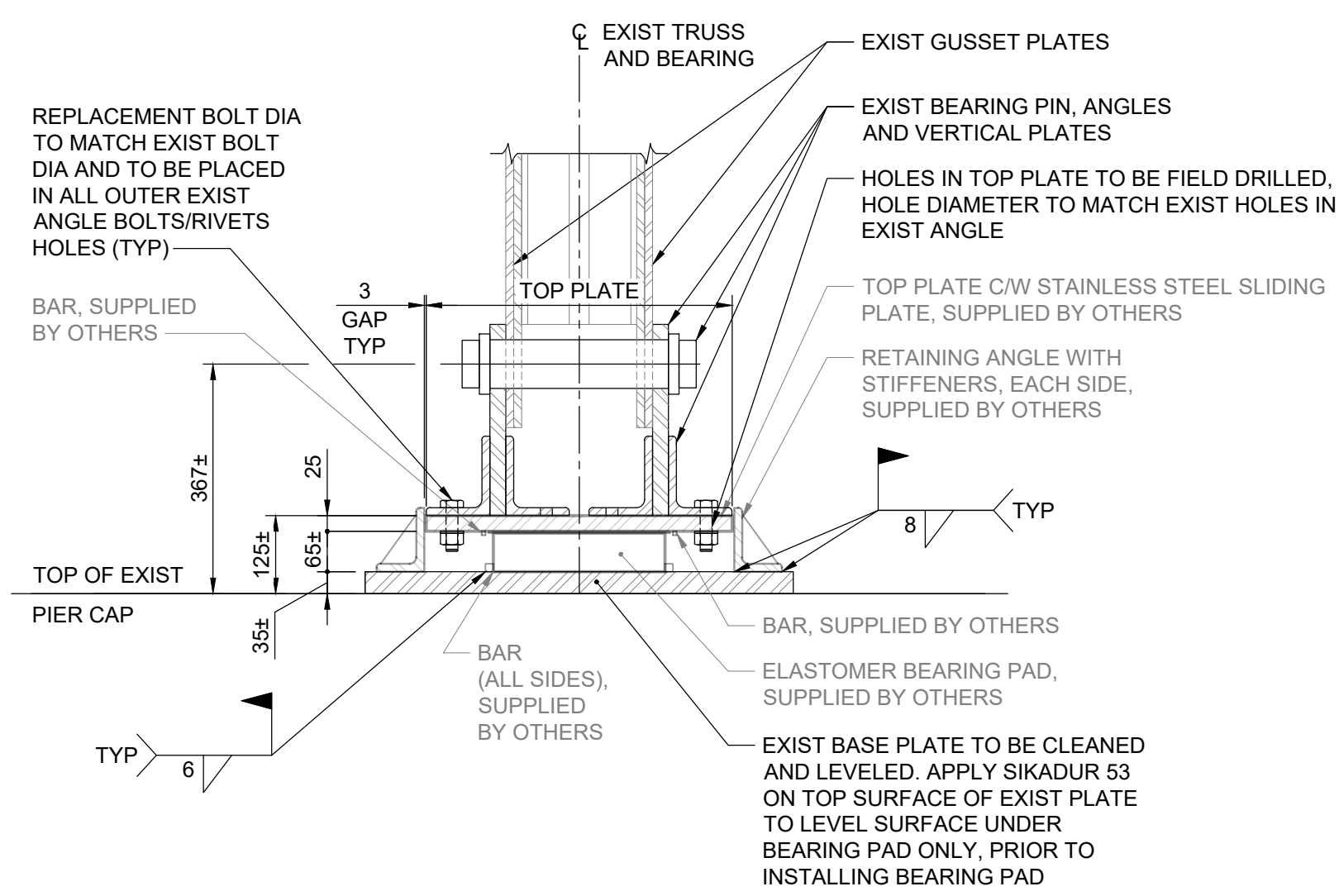
EXISTING TYPE A BEARING - SECTION
1:10



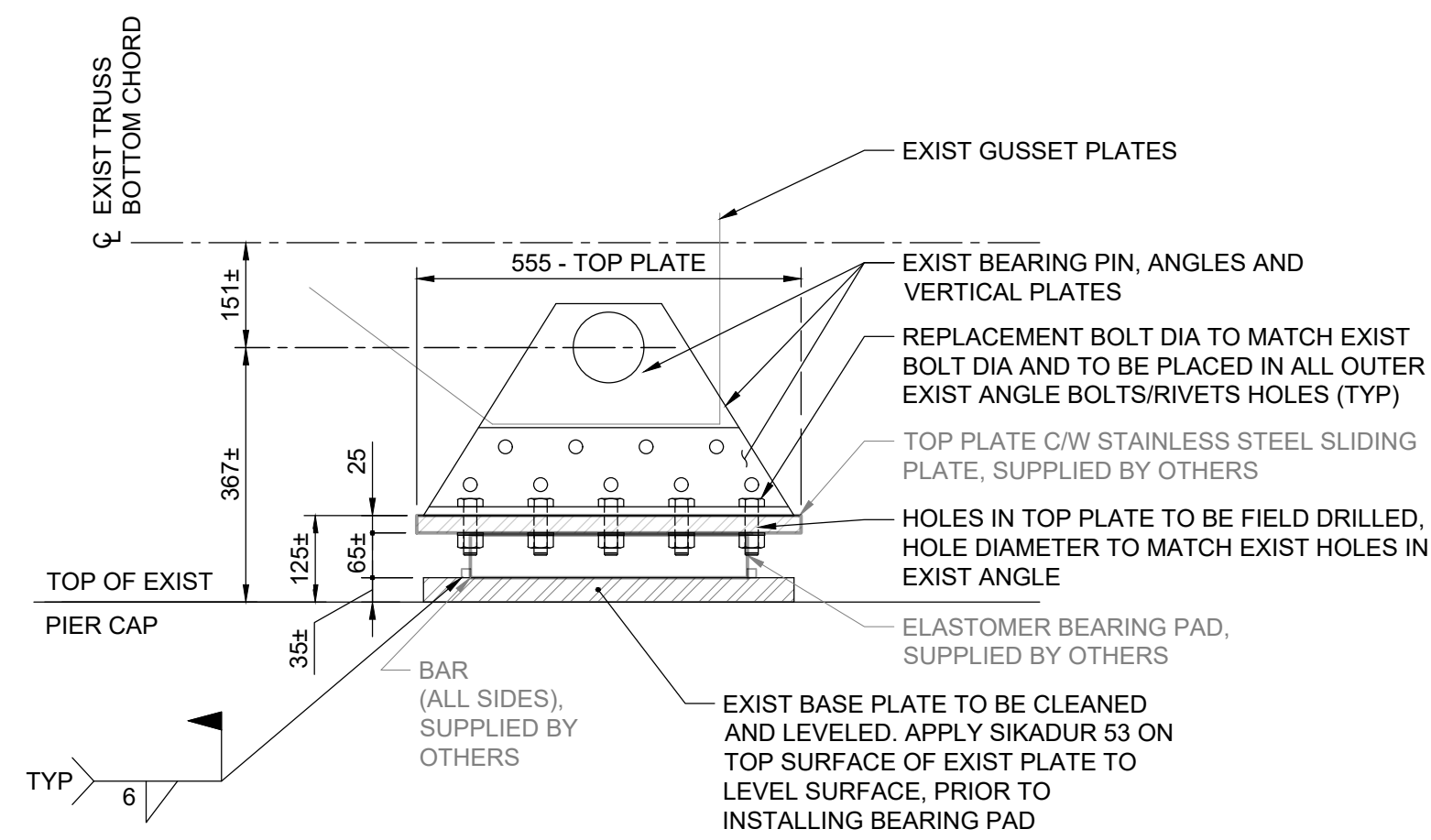
EXISTING TYPE A BEARING - SECTION
1:10



TYPE A BEARING - PLAN
1:10



TYPE A BEARING - SECTION
1:10



TYPE A BEARING - SECTION
1:10

BEARING DATA TABLE - FOR TYPE A REPLACEMENT

LOCATION	SLS DESIGN LOADS		ULS DESIGN LOADS		TOTAL LONGITUDINAL MOVEMENT (MINIMUM)
	DEAD LOAD	TOTAL LOAD	DEAD LOAD	TOTAL LOAD	
PIER 2 (4), PIER 4 (4), PIER 6 (2)	(kN)	(kN)	(kN)	(kN)	(mm)
	480	726	546	1012	±40

NOTES:

- EXISTING STRUCTURE CONDITIONS ARE SHOWN FOR REFERENCE AND TO BE FIELD VERIFIED PRIOR TO FABRICATION. ANY DISCREPANCIES SHALL BE NOTED TO THE ENGINEER FOR REVIEW.
- BEARINGS SHOWN IN THESE DETAILS ARE FOR ILLUSTRATION PURPOSES ONLY AND SUPPLIED BY OTHERS.
- BEARING MANUFACTURER TO DESIGN THE BEARINGS FOR THE LOADS, MOVEMENT AS NOTED IN THE BEARING DATA TABLE AND TO CONFIRM THE DESIGN. ANY VARIATIONS SUBJECT TO APPROVAL BY THE ENGINEER.
- PROVIDE PROTECTION TO BEARINGS AND ITS COMPONENTS DURING SHIPPING, HANDLING AND INSTALLATION.
- EXIST BEARING PIN TO BE CLEANED AND LUBRICATED.
- FINAL BEARING HEIGHTS TO ENSURE EXISTING ELEVATIONS ARE MATCHED AT FINAL RESTING.
- REFER TO SHEET 3 TO 6 FOR BEARING LOCATIONS, JACKING NOTES AND DETAILS.
- BEARINGS SHALL BE INSTALLED IN ACCORDANCE WITH BEARING MANUFACTURER'S SPECIFIED INSTALLATION PROCEDURES.

DISCLAIMER
THE PROPOSED DESIGN COMPLETED BY TETRA TECH CANADA INC IS BASED ON COMPETENT STEEL AND CONCRETE MEMBERS AND CONNECTIONS WITH LIGHT CORROSION. TETRA TECH CANADA INC CANNOT GUARANTEE THAT THERE ARE ADDITIONAL STRUCTURAL STEEL OR CONCRETE DEFECTS, NOT EVIDENT DURING TETRA TECH CANADA INC 2023 INSPECTION, THAT MAY IMPACT THE DESIGNED BEARING REPLACEMENT. THE DESIGNED BEARING REPLACEMENT DOES NOT ENSURE PUBLIC SAFETY, RATHER PROVIDES SOME LEVEL OF COMFORT THAT THE PRATT TRUSS EXPANSION AND CONTRACTION IS NOT OBSTRUCTED.



B.M. ELEV.	NO.	REVISIONS	DATE	BY
	00	ISSUED FOR TENDER	24.05.14	SA

TETRA TECH

DESIGNED BY SA	REVIEWED BY KA
DRAWN BY EV	APPROVED BY MJB
SCALE: AS NOTED	ACCEPTED BY DATE
DATE 24.05.14	ORIGINAL SIGNED

MOHAMED MARY, PH.D., P.ENG. BRIDGE PLANNING & OPERATIONS ENGINEER

ORIGINAL DRAWING REVISION "00" SEALED BY S.Y.I. AWAD 24.05.14
CONSULTANT DRAWING NO. 734-230070400-DWG-S1107

THE CITY OF WINNIPEG PUBLIC WORKS DEPARTMENT

ARLINGTON BRIDGE REHABILITATION BEARING REPLACEMENT

TYPE A BEARING DETAILS

CITY DRAWING NUMBER B106-24-07
SHEET 7 OF 7