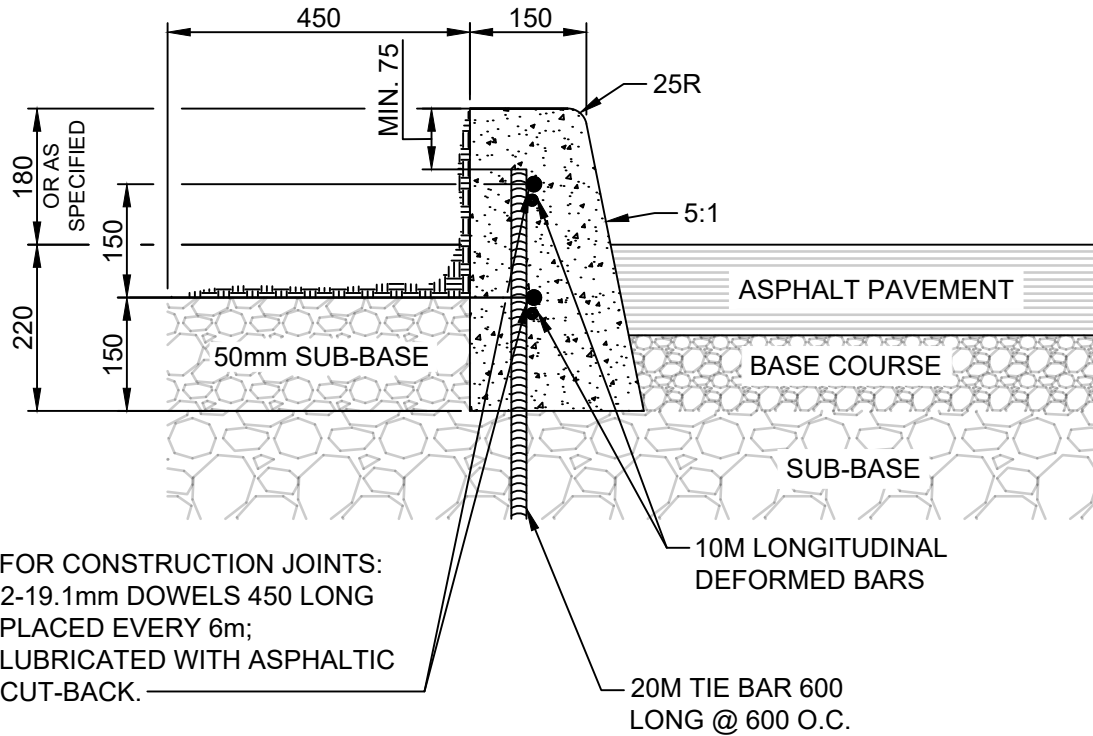


APPENDIX 'C'

CURB DETAILS FOR ASPHALT PAVEMENTS



NOTES:

1. TRANSVERSE SAW CUT EVERY 3m OR AT PAVEMENT JOINTS
2. TRANSVERSE SAW CUTS ARE TO BE A MAXIMUM DEPTH OF 25mm

DIMENSIONS IN MILLIMETRES



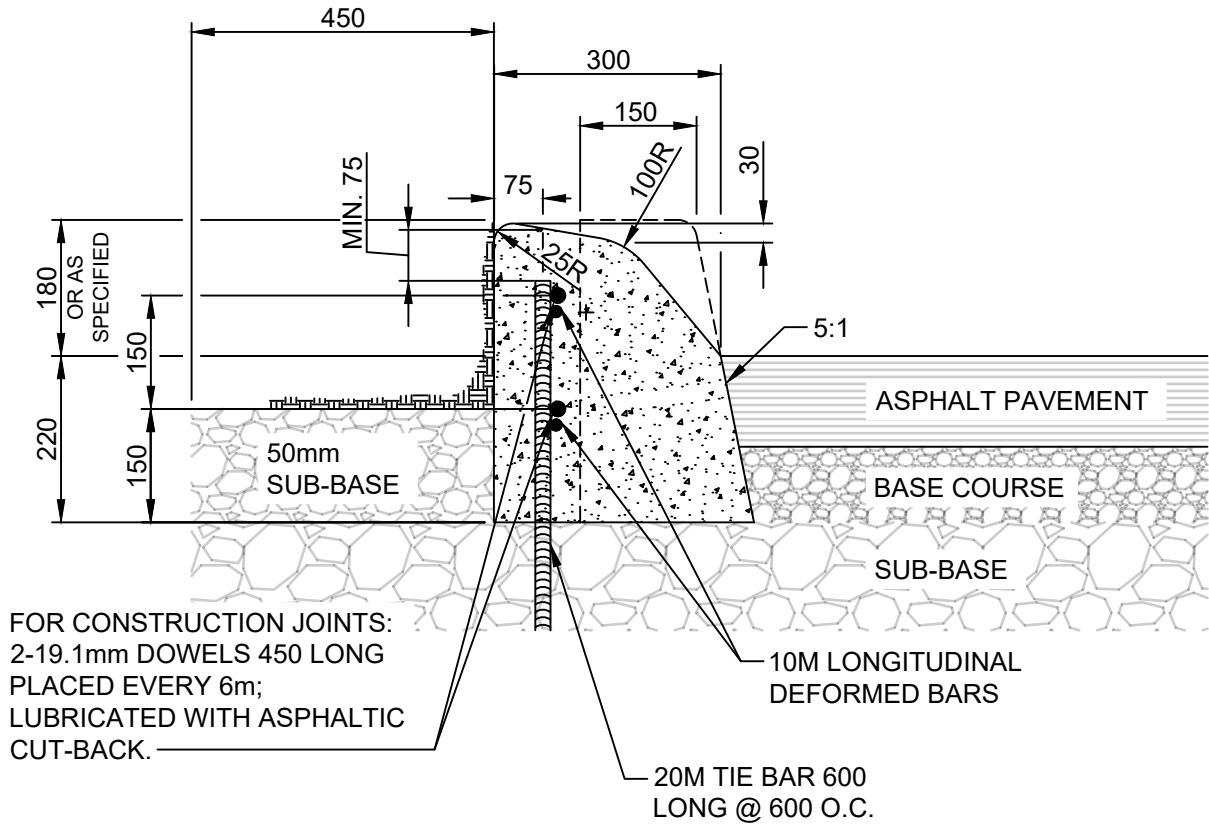
THE CITY OF WINNIPEG
PUBLIC WORKS DEPARTMENT

Reference Spec. No.
CW 3325

Revisions			
No.	Date	Description	By

**BARRIER CURB FOR
ASPHALT PAVEMENT**


Designed By: A.G.	Drawn By: R.B.	Scale : N.T.S Drawing No. SD-200A DRAFT
Checked By: B.K.	Date: 2024-03-19	
Approved: PAVEMENT MANAGEMENT BRANCH		

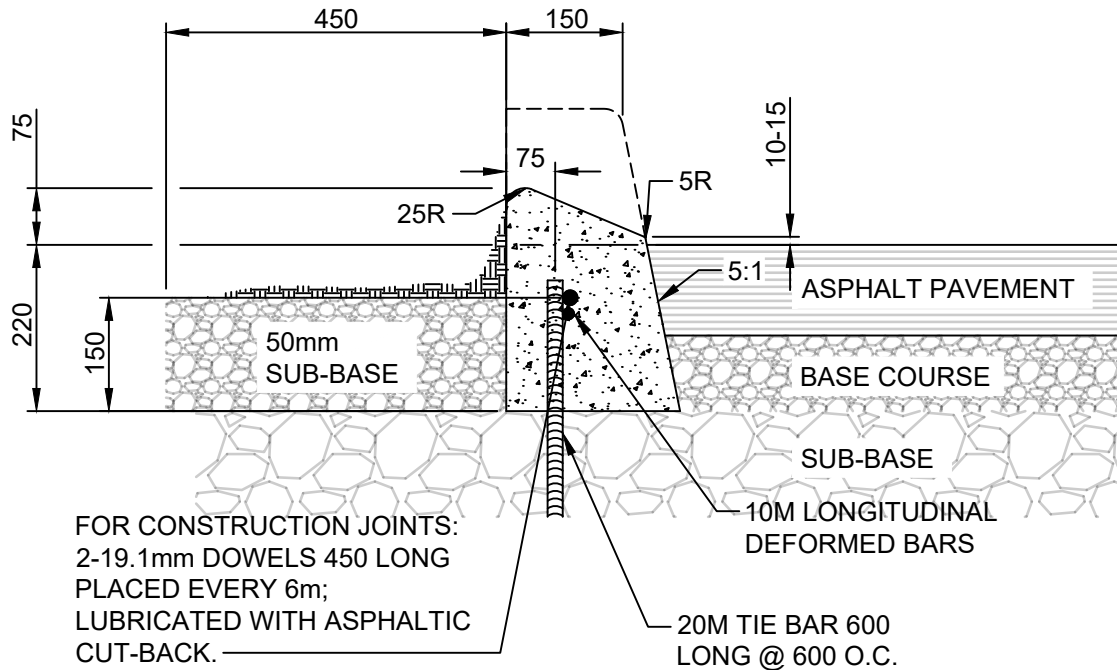


NOTES:

1. TRANSVERSE SAW CUT EVERY 3m OR AT PAVEMENT JOINTS
2. TRANSVERSE SAW CUTS ARE TO BE A MAXIMUM DEPTH OF 25mm

DIMENSIONS IN MILLIMETRES

	THE CITY OF WINNIPEG PUBLIC WORKS DEPARTMENT	Revisions			
	Reference Spec. No. CW 3325				
MODIFIED BARRIER CURB FOR ASPHALT PAVEMENT		No.	Date	Description	By
		Designed By: A.G.		Drawn By: R.B.	Scale : N.T.S
		Checked By: B.K.		Date: 2024-03-19	Drawing No. SD-200B
		Approved: PAVEMENT MANAGEMENT BRANCH			DRAFT



NOTES:

1. TRANSVERSE SAW CUT EVERY 3m OR AT PAVEMENT JOINTS
2. TRANSVERSE SAW CUTS ARE TO BE A MAXIMUM DEPTH OF 25mm

DIMENSIONS IN MILLIMETRES



THE CITY OF WINNIPEG
PUBLIC WORKS DEPARTMENT

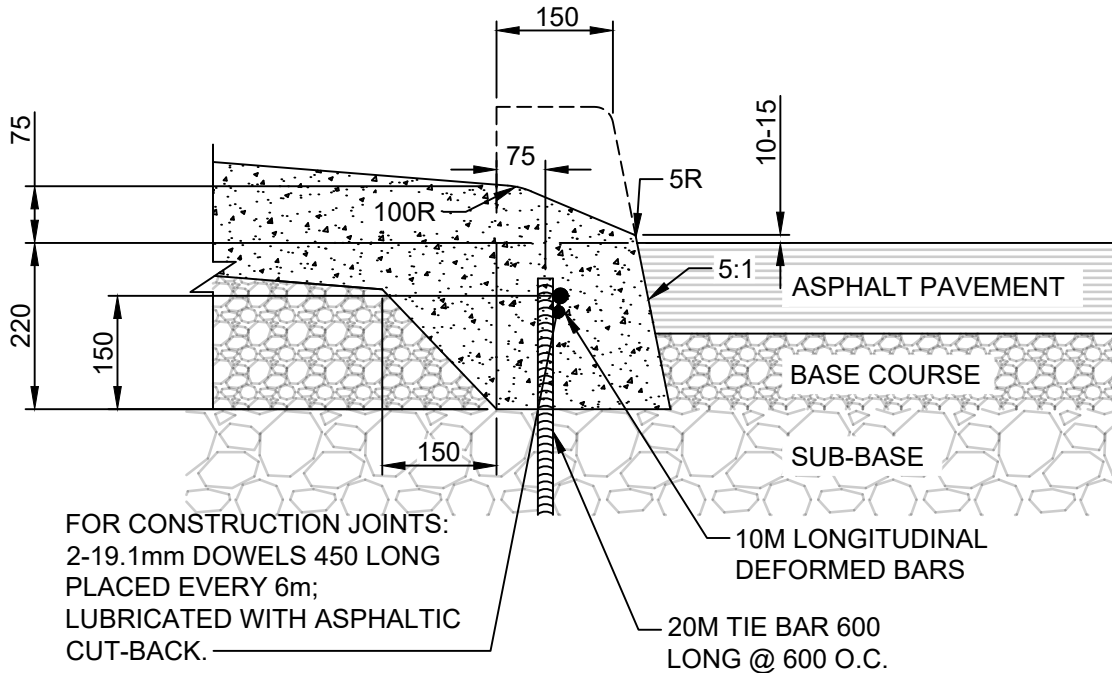
Revisions			

Reference Spec. No.
CW 3325

No.	Date	Description	By

**75 mm LIP CURB FOR
ASPHALT PAVEMENT**

Designed By: A.G.	Drawn By: R.B.	Scale : N.T.S
Checked By: B.K.	Date: 2024-03-19	
Approved: PAVEMENT MANAGEMENT BRANCH		Drawing No. SD-200C DRAFT



NOTES:

1. TRANSVERSE SAW CUT EVERY 3m OR AT PAVEMENT JOINTS
2. TRANSVERSE SAW CUTS ARE TO BE A MAXIMUM DEPTH OF 25mm

DIMENSIONS IN MILLIMETRES



THE CITY OF WINNIPEG
PUBLIC WORKS DEPARTMENT

Reference Spec. No.
CW 3325

Revisions			
No.	Date	Description	By

**75 mm LIP CURB WITH
INTEGRAL APPROACH
FOR ASPHALT PAVEMENT**

Designed By:
A.G.

Checked By:
B.K.

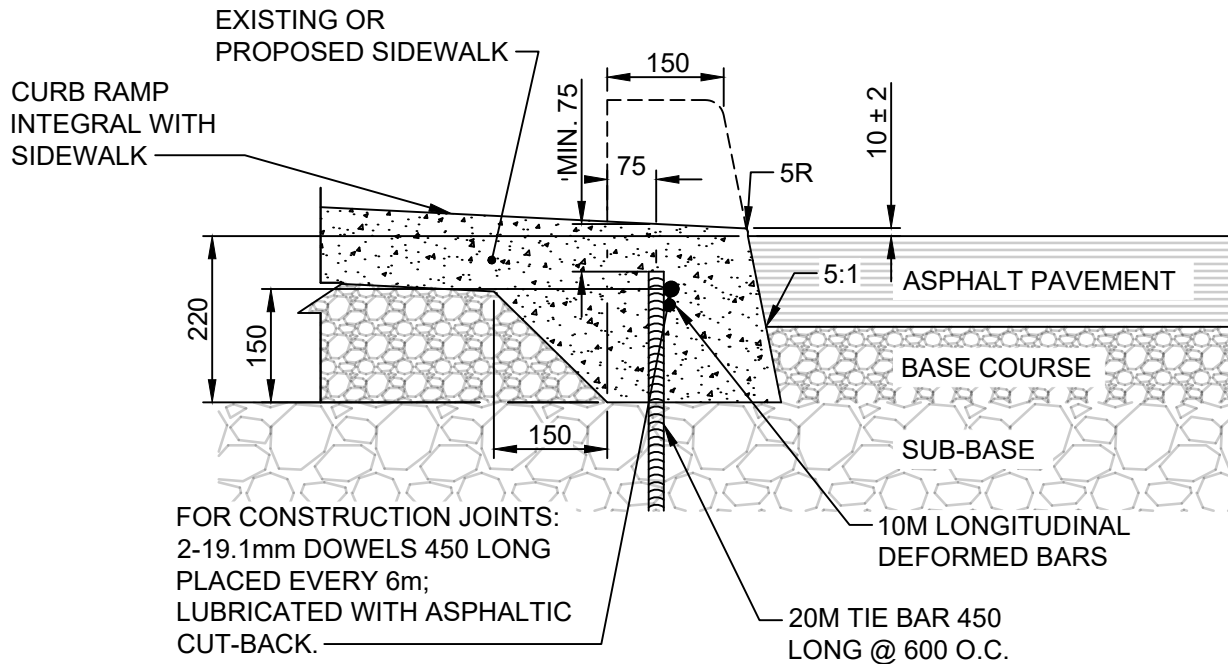
Approved:
PAVEMENT MANAGEMENT BRANCH

Drawn By:
R.B.

Date:
2024-03-19

Scale :
N.T.S

Drawing No.
SD-200CA
DRAFT



NOTES:

1. TRANSVERSE SAW CUT EVERY 3m OR AT PAVEMENT JOINTS
2. TRANSVERSE SAW CUTS ARE TO BE A MAXIMUM DEPTH OF 25mm

DIMENSIONS IN MILLIMETRES



THE CITY OF WINNIPEG
PUBLIC WORKS DEPARTMENT

Reference Spec. No.
CW 3325

Revisions

No.	Date	Description	By

**CURB RAMP FOR
ASPHALT PAVEMENT**

Designed By:
A.G.

Drawn By:
R.B.

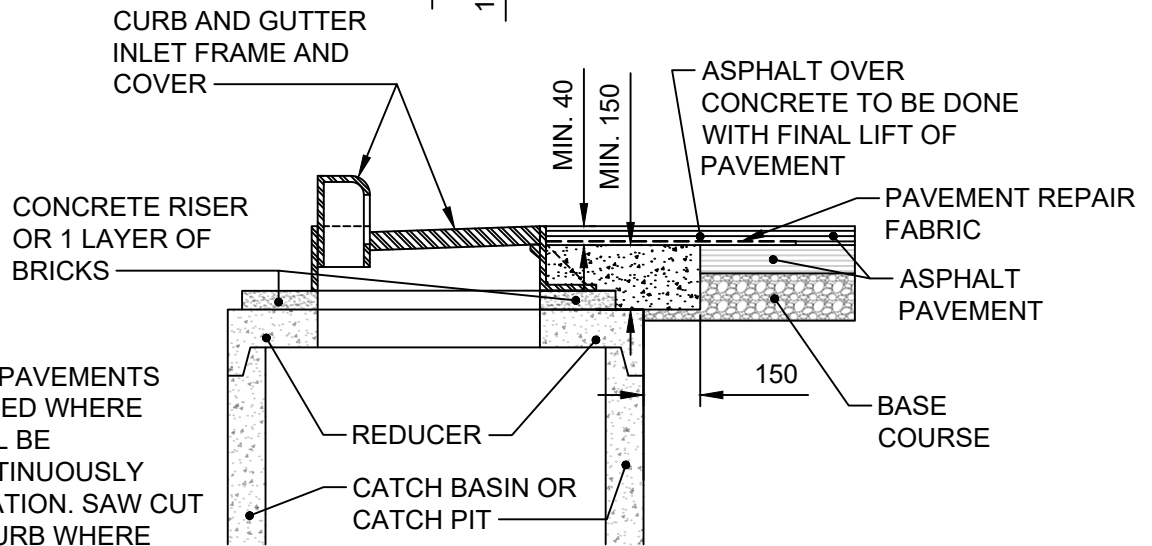
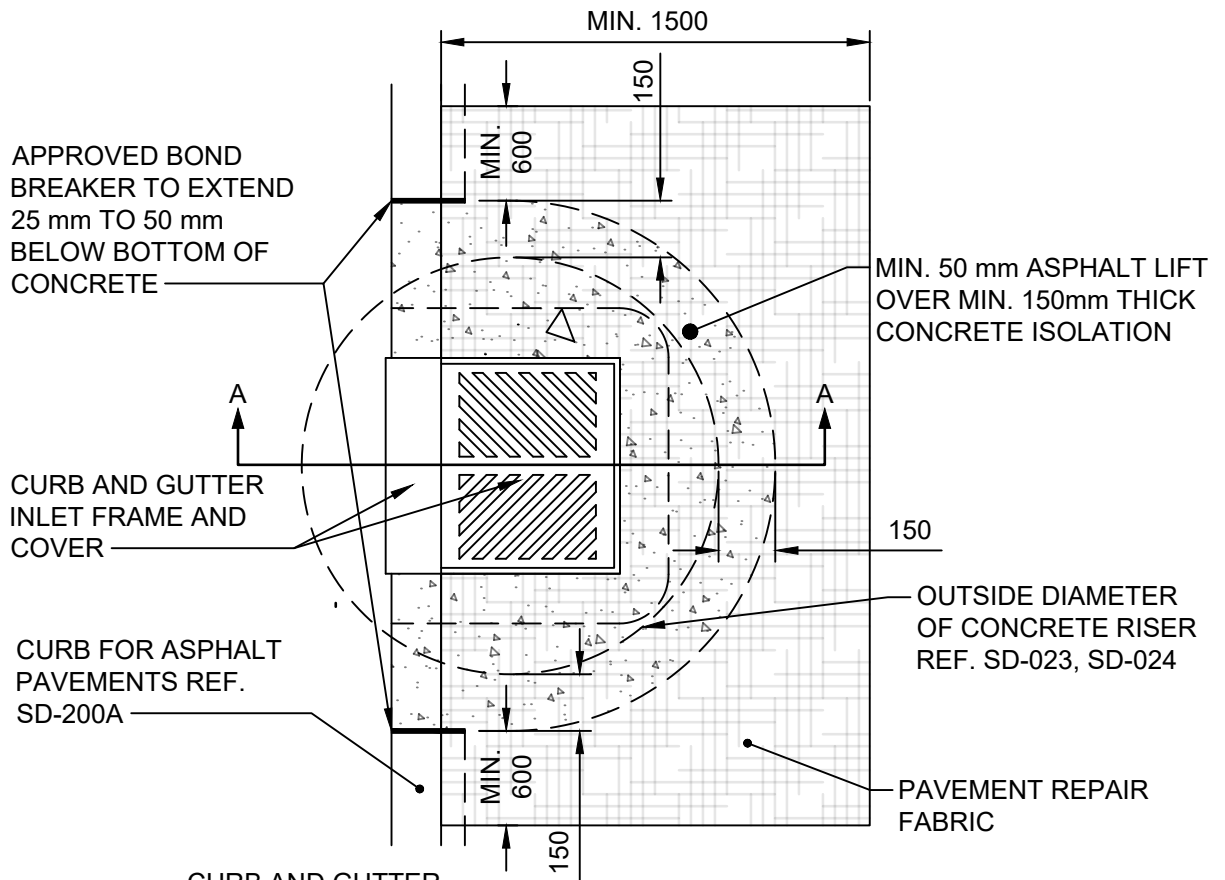
Scale :
N.T.S

Checked By:
B.K.

Date:
2024-03-19

Drawing No.
**SD-200D
DRAFT**

Approved:
PAVEMENT MANAGEMENT BRANCH



NOTE:

CURB FOR ASPHALT PAVEMENTS SHALL BE SLIP FORMED WHERE POSSIBLE AND SHALL BE CONSTRUCTED CONTINUOUSLY THROUGH THE ISOLATION. SAW CUT AND REMOVE THE CURB WHERE ISOLATION WILL BE INSTALLED.

SECTION A-A

DIMENSIONS IN MILLIMETRES



THE CITY OF WINNIPEG
PUBLIC WORKS DEPARTMENT

Reference Spec. No.
CW 3325

Revisions			
No.	Date	Description	By

INLET ISOLATION DETAIL FOR
ASPHALT PAVEMENTS

Designed By: A.G.	Drawn By: R.B.	Scale : N.T.S.
Checked By: B.K.	Date: 2023-2-16	Drawing No. SD-220D
Approved: PAVEMENT MANAGEMENT BRANCH		DRAFT