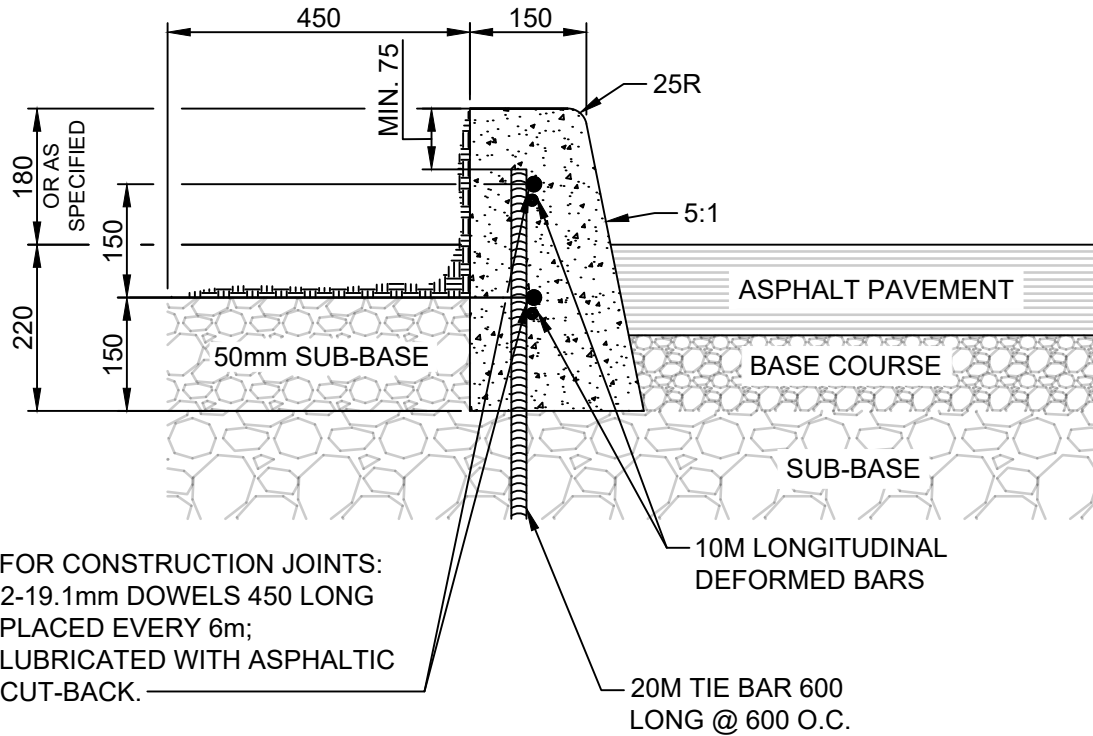


APPENDIX 'C'

CURB DETAILS FOR ASPHALT PAVEMENTS



NOTES:

1. TRANSVERSE SAW CUT EVERY 3m OR AT PAVEMENT JOINTS
2. TRANSVERSE SAW CUTS ARE TO BE A MAXIMUM DEPTH OF 25mm

DIMENSIONS IN MILLIMETRES



THE CITY OF WINNIPEG
PUBLIC WORKS DEPARTMENT

Reference Spec. No.
CW 3325

Revisions

No.	Date	Description	By

**BARRIER CURB FOR
ASPHALT PAVEMENT**

Designed By:
A.G.

Drawn By:
R.B.

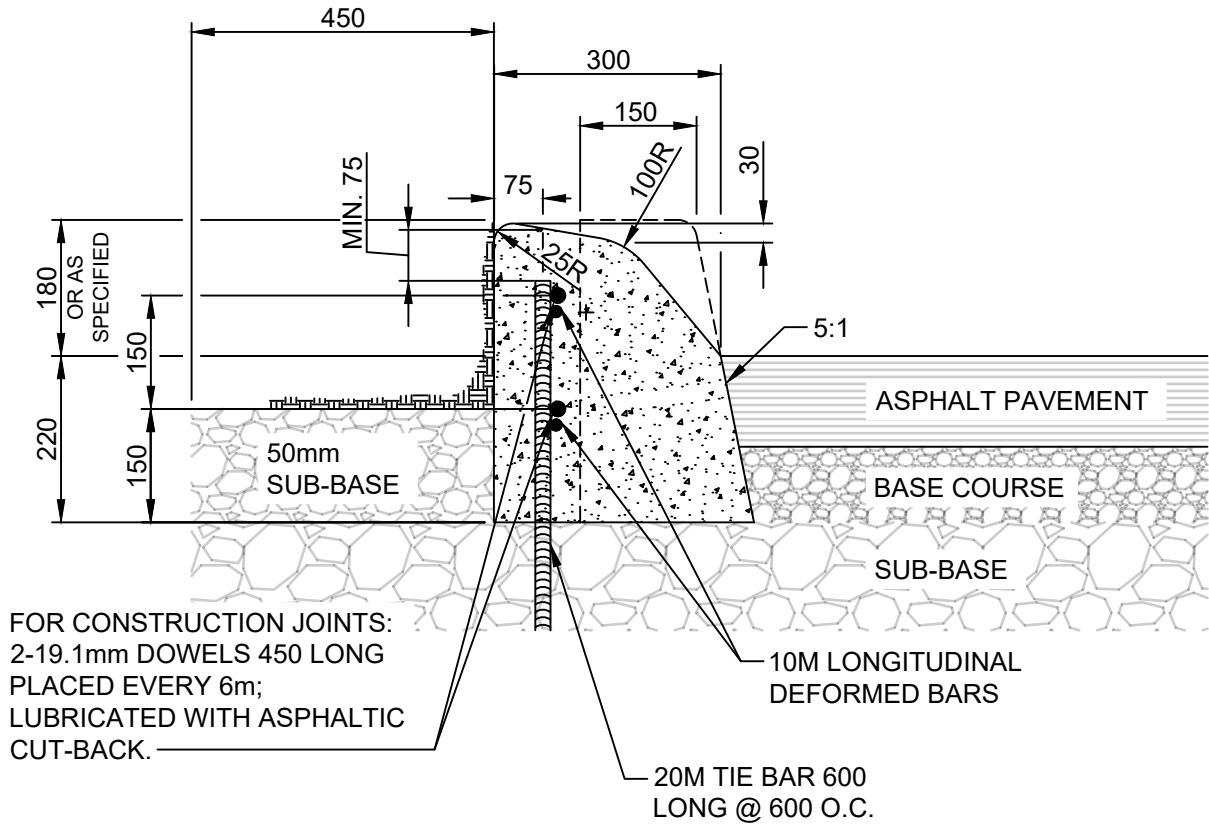
Scale :
N.T.S

Checked By:
B.K.

Date:
2024-03-19

Drawing No.
**SD-200A
DRAFT**

Approved:
PAVEMENT MANAGEMENT BRANCH



NOTES:

1. TRANSVERSE SAW CUT EVERY 3m OR AT PAVEMENT JOINTS
2. TRANSVERSE SAW CUTS ARE TO BE A MAXIMUM DEPTH OF 25mm

DIMENSIONS IN MILLIMETRES



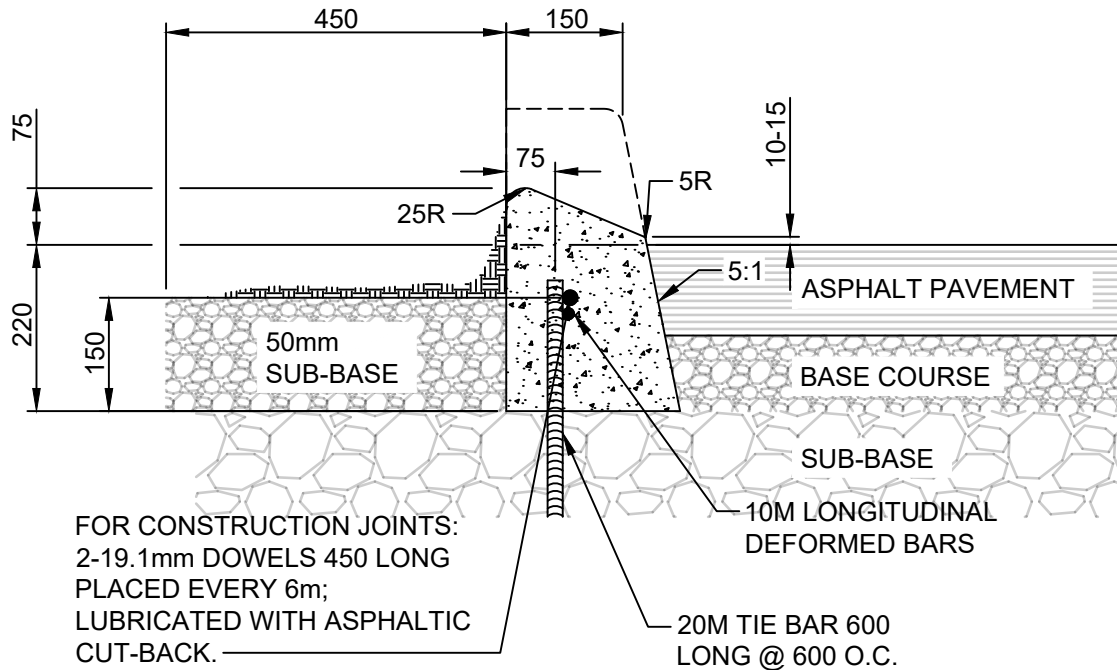
THE CITY OF WINNIPEG
PUBLIC WORKS DEPARTMENT

Reference Spec. No.
CW 3325

Revisions			
No.	Date	Description	By

**MODIFIED BARRIER CURB
FOR ASPHALT PAVEMENT**


Designed By: A.G.	Drawn By: R.B.	Scale : N.T.S
Checked By: B.K.	Date: 2024-03-19	
Approved: PAVEMENT MANAGEMENT BRANCH		Drawing No. SD-200B DRAFT

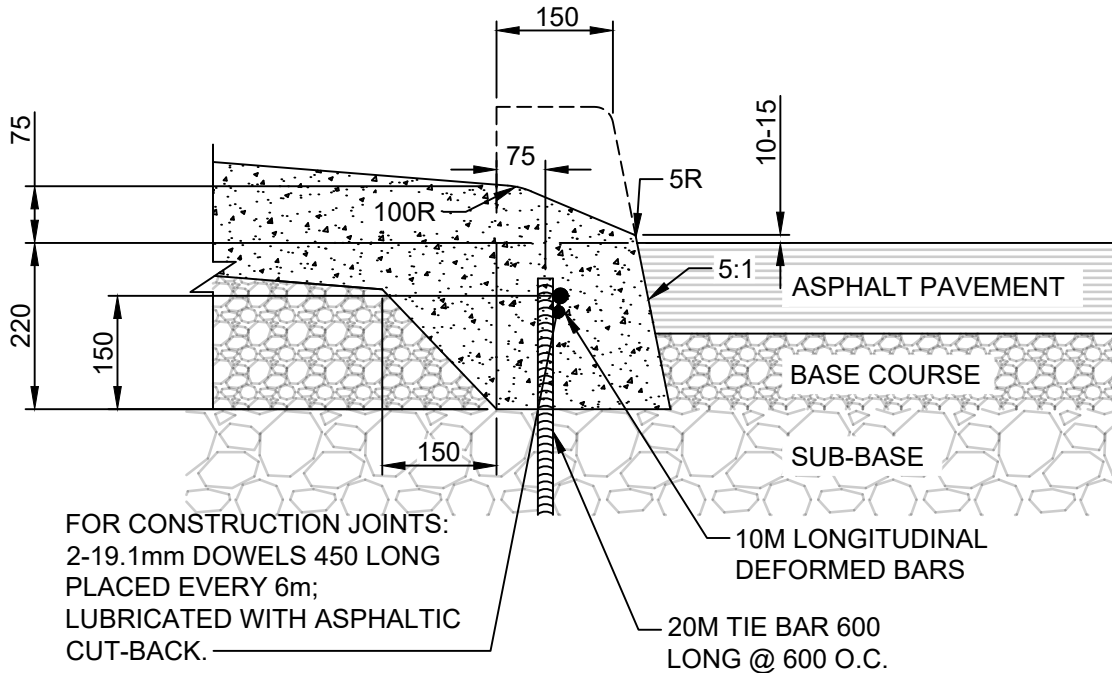


NOTES:

1. TRANSVERSE SAW CUT EVERY 3m OR AT PAVEMENT JOINTS
2. TRANSVERSE SAW CUTS ARE TO BE A MAXIMUM DEPTH OF 25mm

DIMENSIONS IN MILLIMETRES

 THE CITY OF WINNIPEG PUBLIC WORKS DEPARTMENT	Revisions		
Reference Spec. No. CW 3325			
75 mm LIP CURB FOR ASPHALT PAVEMENT	Designed By: A.G.	Drawn By: R.B.	Scale : N.T.S
	Checked By: B.K.	Date: 2024-03-19	Drawing No. SD-200C
	Approved: PAVEMENT MANAGEMENT BRANCH		DRAFT



NOTES:

1. TRANSVERSE SAW CUT EVERY 3m OR AT PAVEMENT JOINTS
2. TRANSVERSE SAW CUTS ARE TO BE A MAXIMUM DEPTH OF 25mm

DIMENSIONS IN MILLIMETRES



THE CITY OF WINNIPEG
PUBLIC WORKS DEPARTMENT

Reference Spec. No.
CW 3325

Revisions

No.	Date	Description	By

**75 mm LIP CURB WITH
INTEGRAL APPROACH
FOR ASPHALT PAVEMENT**

Designed By:
A.G.

Drawn By:
R.B.

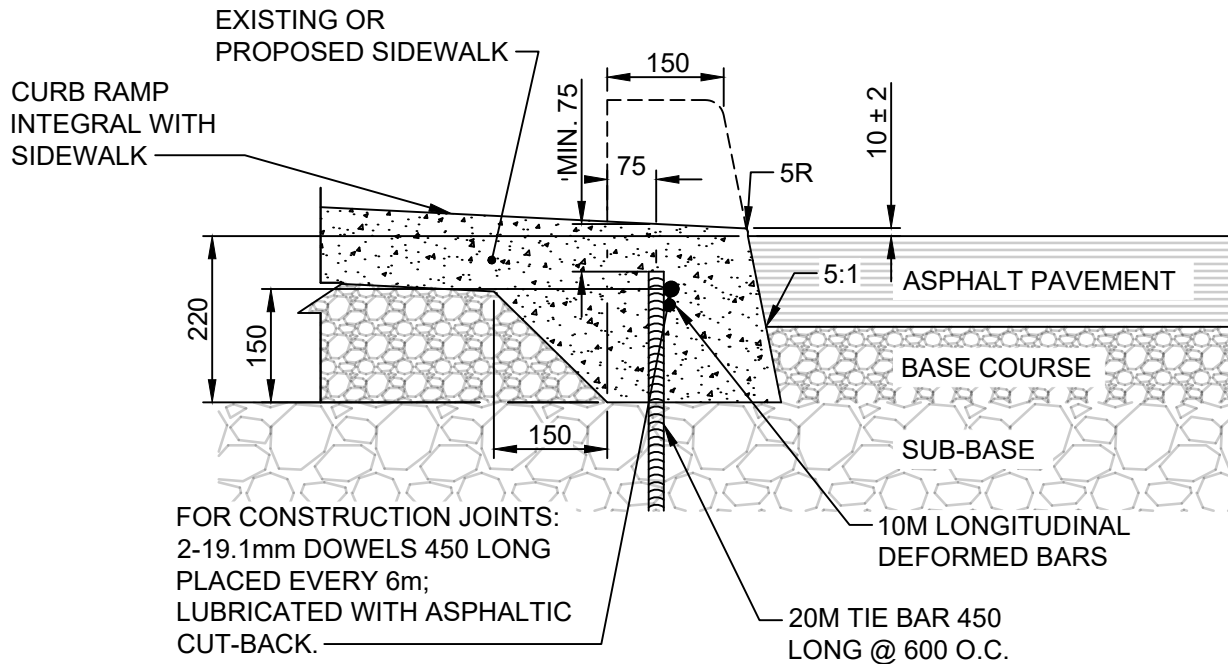
Scale :
N.T.S

Checked By:
B.K.

Date:
2024-03-19

Drawing No.
**SD-200CA
DRAFT**

Approved:
PAVEMENT MANAGEMENT BRANCH



NOTES:

1. TRANSVERSE SAW CUT EVERY 3m OR AT PAVEMENT JOINTS
2. TRANSVERSE SAW CUTS ARE TO BE A MAXIMUM DEPTH OF 25mm

DIMENSIONS IN MILLIMETRES



THE CITY OF WINNIPEG
PUBLIC WORKS DEPARTMENT

Reference Spec. No.
CW 3325

Revisions

No.	Date	Description	By

**CURB RAMP FOR
ASPHALT PAVEMENT**

Designed By:
A.G.

Checked By:
B.K.

Approved:
PAVEMENT MANAGEMENT BRANCH

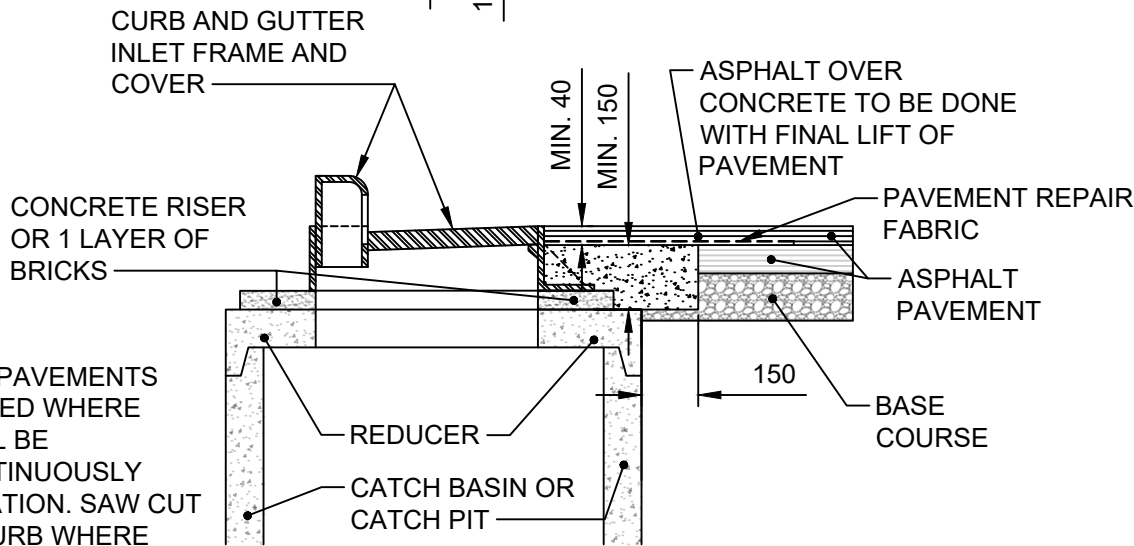
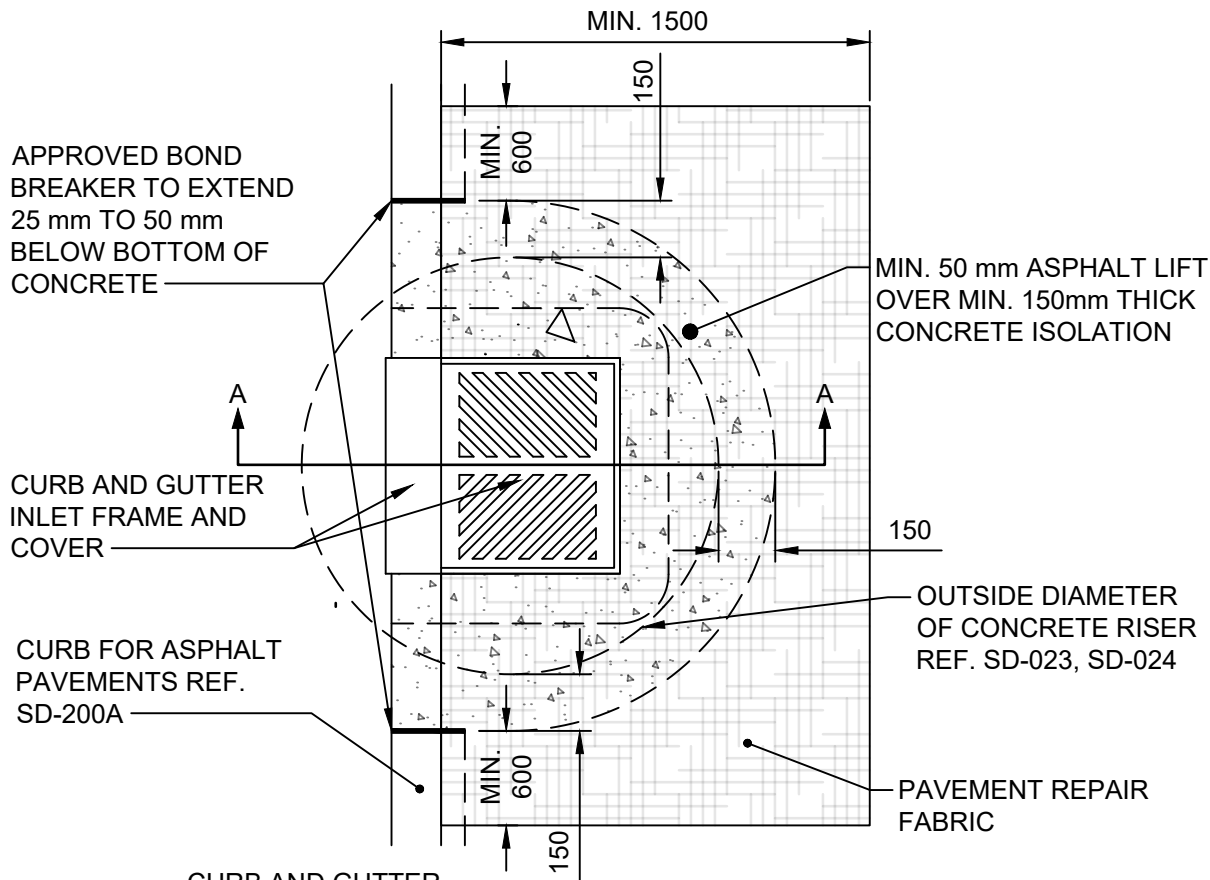
Drawn By:
R.B.

Date:
2024-03-19

Scale :
N.T.S

Drawing No.
SD-200D

DRAFT



NOTE:

CURB FOR ASPHALT PAVEMENTS SHALL BE SLIP FORMED WHERE POSSIBLE AND SHALL BE CONSTRUCTED CONTINUOUSLY THROUGH THE ISOLATION. SAW CUT AND REMOVE THE CURB WHERE ISOLATION WILL BE INSTALLED.

SECTION A-A

DIMENSIONS IN MILLIMETRES



THE CITY OF WINNIPEG
PUBLIC WORKS DEPARTMENT

Reference Spec. No.
CW 3325

Revisions

No.	Date	Description	By

INLET ISOLATION DETAIL FOR
ASPHALT PAVEMENTS

Designed By:
A.G.

Drawn By:
R.B.

Scale :
N.T.S.

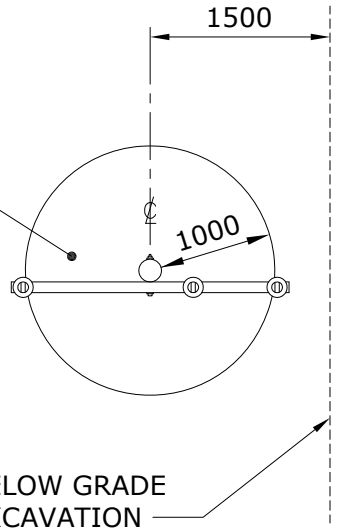
Checked By:
B.K.

Date:
2023-2-16

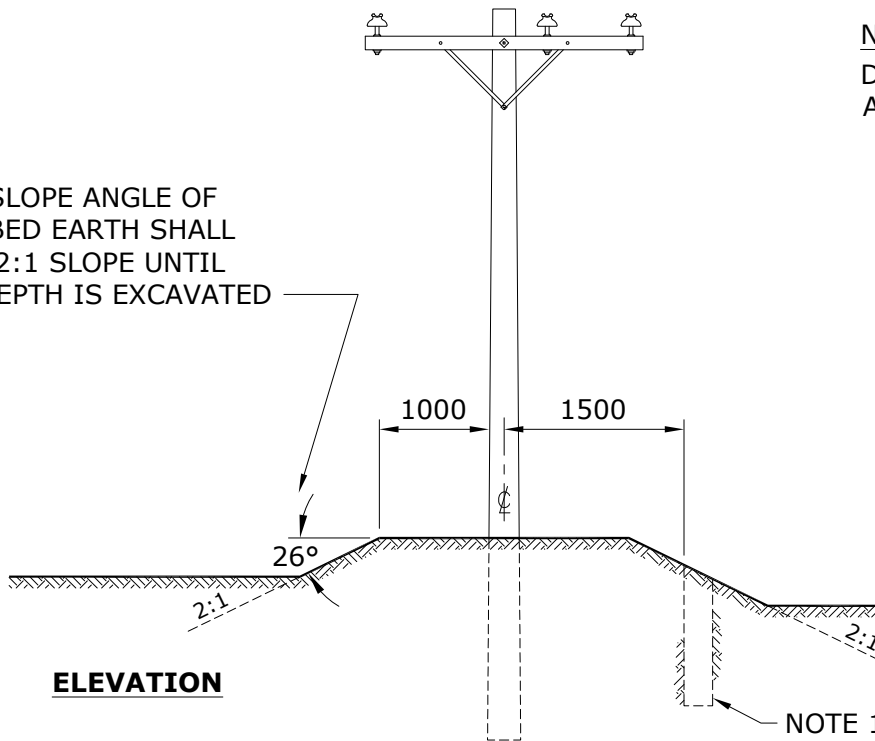
Drawing No.
SD-220D
DRAFT

Approved:
PAVEMENT MANAGEMENT BRANCH

FOR CHANGES IN GRADE,
THE MINIMUM AMOUNT OF
UNDISTURBED EARTH TO BE
LEFT ALL AROUND POLES
SHALL BE 1000mm



MAXIMUM SLOPE ANGLE OF
UNDISTURBED EARTH SHALL
BE 26° OR 2:1 SLOPE UNTIL
DESIRED DEPTH IS EXCAVATED



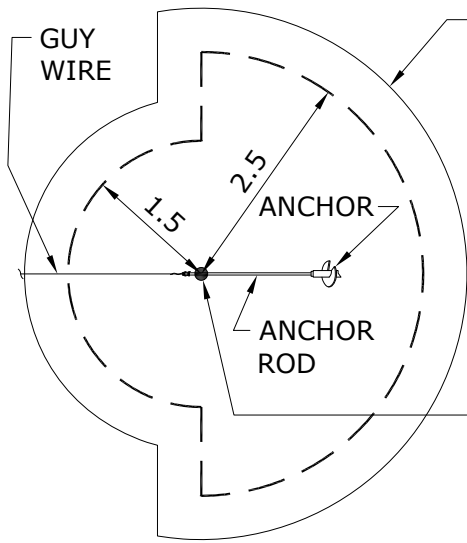
NOTE:
DIMENSIONS SHOWN
ARE MILLIMETRES.

NOTE:

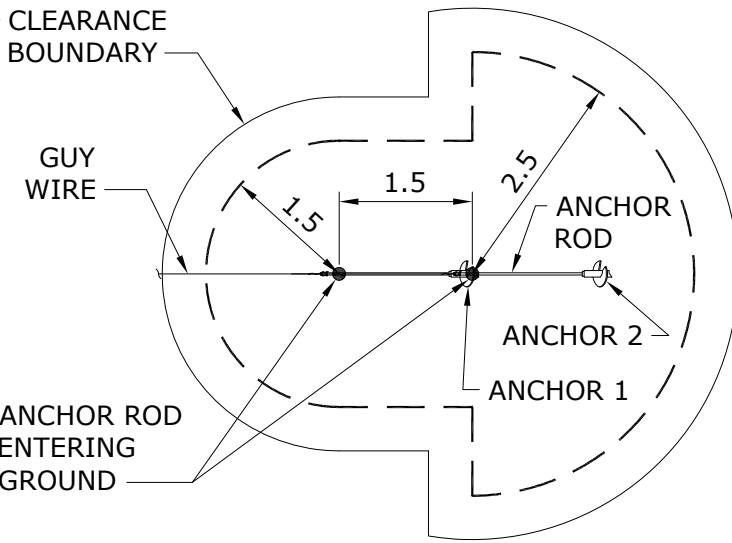
1. THE MINIMUM SEPARATION (TO ANY SIDE OF A POLE) FOR EXCAVATIONS DEEPER THAN 500mm WITHOUT DISTRIBUTION ENGINEERING INVOLVEMENT SHALL BE 1500mm, EXCAVATIONS TO BE BACKFILLED & TAMPED TO MAINTAIN SLOPE. A CIVIL ENGINEER SHOULD BE CONSULTED FOR ANY LARGER (TEMPORARY OR PERMANENT) EXCAVATIONS.

SUPERCEDES ORIGINAL SEALED BY E. WIEBE ON 94-07-11

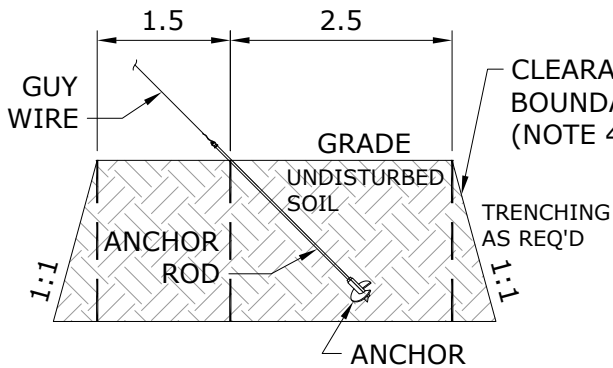
APPROVED	REVISIONS			MANITOBA HYDRO DISTRIBUTION STANDARDS			
ORIGINAL DRAWING SEALED BY D.R. ORR 19-05-17	23-01	4	ADDED SHEET 2 - EXCAVATION LIMITS AROUND ANCHORS	ALLOWABLE EXCAVATIONS AROUND EXISTING POLES AND ANCHORS			
	19-04	3	REVISED NOTE 1, RESEALED				
	06-02	2	REVISED SLOPE & ADDED MORE EXPLANATION TO NOTES				
DRAWN C.A.	CHECKED G.D./C.W.	DATE 19-04	CD 30-55			SHT 0001 OF 2	REV 04



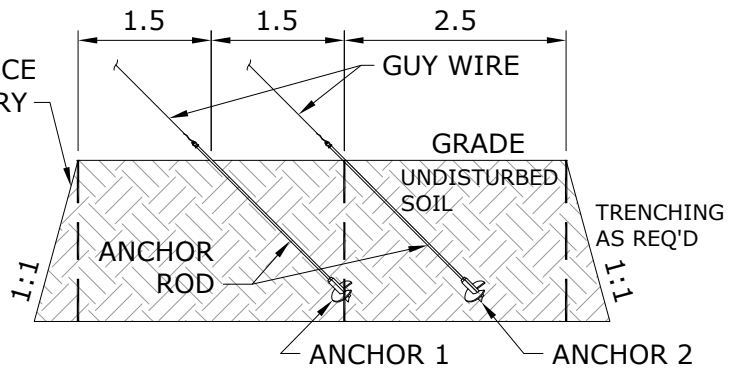
SINGLE ANCHOR - TOP VIEW



MULTIPLE ANCHOR - TOP VIEW



SINGLE ANCHOR - PLAN VIEW



MULTIPLE ANCHOR - PLAN VIEW

NOTES:

1. EXCAVATION ZONE LIMITS ARE ONLY APPLICABLE FOR NORMAL OR BETTER SOIL CONDITIONS. FOR POOR OR SWAMP SOIL CONDITIONS, CONTACT DISTRIBUTION ENGINEERING BEFORE BEGINNING ANY WORK.
2. IF THERE ARE MULTIPLE ANCHORS IN-LINE, ADD ANOTHER 1.5m FOR EACH ADDITIONAL ANCHOR TO THE 1.5m MINIMUM DIMENSION.
3. THIS DRAWING SHOWS A PISA ANCHOR, IT IS APPLICABLE FOR ALL ANCHOR TYPES.
4. EXCAVATION TO BE DONE AT MAXIMUM ANGLE OF 45° SLOPE AWAY FROM THE CLEARANCE BOUNDARY. THE HORIZONTAL AND VERTICAL CUTS SHALL NOT BE STEEPER THAN 1:1 RATIO TO PREVENT CAVE-IN.
5. IF AT ANY TIME IN THE COURSE OF EXCAVATION THE POLE OR ITS SUPPORTING EQUIPMENT APPEARS TO BECOME UNSTABLE TO ANY DEGREE, WORK SHALL BE HALTED IMMEDIATELY AND DISTRIBUTION ENGINEERING SHALL BE CONTACTED BEFORE PROCEEDING WITH ANY ADDITIONAL EXCAVATION.
6. IF THE SPECIFIED CLEARANCES CANNOT BE MET, CONTACT DISTRIBUTION ENGINEERING BEFORE BEGINNING ANY WORK.
7. DIMENSIONS SHOWN ARE IN METERS.

APPROVED		REVISIONS		MANITOBA HYDRO DISTRIBUTION STANDARDS	
ORIGINAL DRAWING SEALED BY C. WEERAKOON 23-01-30				ALLOWABLE EXCAVATIONS AROUND EXISTING POLES AND ANCHORS	
DRAWN C.A.	CHECKED G.D.	DATE 23-01	CD 30-55		SHT 0002 OF 2
					REV 00