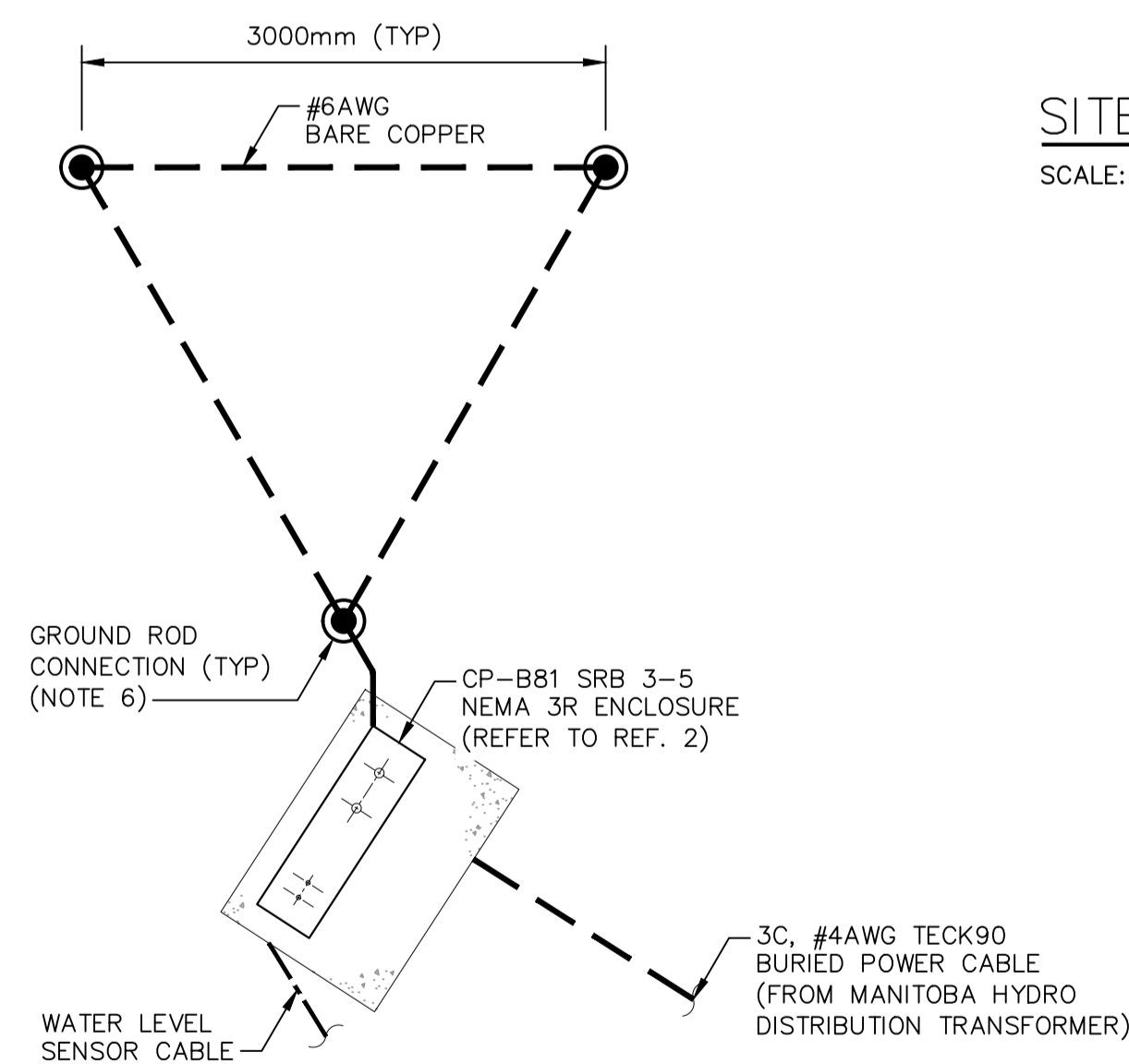


GENERAL NOTES:

1. STORMWATER RETENTION BASIN MONITORING EQUIPMENT SHALL BE IN ELECTRICAL ENCLOSURE AND FLOOR MOUNTED ON A CONCRETE PAD. PROPOSED PAD LOCATION SHOWN IS APPROXIMATE AND TO BE CONFIRMED.
2. REFER TO STRUCTURAL DRAWING FOR PAD FOUNDATION DESIGN AND DETAILS.
3. WATER AND SEWER PIPE NETWORK PLAN (CAD FILE) AS PER CITY OF WINNIPEG DATED 2022/10/21.
4. ALL DIMENSIONS IN METERS UNLESS NOTED.
5. THE CABLE MUST BE NEW AND WITHOUT ANY SPLICE FROM MANITOBA HYDRO TRANSFORMER TO THE SRB PANEL.
6. THE LOCATION OF THE GROUNDING GRID IS TO BE DETERMINED ON THE FIELD.
7. PART OF THE UNDERGROUND CABLE TO BE INSTALLED UNDER THE ROAD SHOULD BE INSTALLED USING DIRECTION BORE INSTEAD OF OPEN TRENCH. THE CABLE SHALL BE INSTALLED 915mm BELOW GRADE.
8. SENSOR CABLE IS TO BE INSTALLED IN 25.4mm RIGID PVC CONDUIT AND PART OF THE CABLE TO BE INSTALLED UNDER THE ROAD SHOULD BE INSTALLED USING DIRECTION BORE INSTEAD OF OPEN TRENCH. THE CABLE SHOULD BE INSTALLED 915 MM BELOW GRADE.
9. CONTRACTOR IS TO REPAIR THE PATHWAYS TO THE CONDITION FOUND WHEN THE WORK IS COMPLETE IF THE CONTRACTOR DISTURBS THE PATHWAY.
10. THE CONTRACTOR IS TO EXCAVATE THE AREA WHERE THE POWER CABLE FOR THE PANEL IS TO BE INSTALLED USING OPEN TRENCH AND DIRECTION BORE (FOR PORTION ACROSS THE PATHWAY AND THE ROAD) AND INSTALL THE POWER CABLE AS INDICATED IN THE CABLE TRENCH DETAIL. AFTER THE POWER CABLE HAS BEEN INSTALLED, THE CONTRACTOR IS TO BACK FILL THE TRENCH AND REPAIR THE AREA OF EXCAVATION TO THE CONDITION FOUND.
11. THE CONTRACTOR IS TO EXCAVATE AND INSTALL THE RIGID PVC CONDUIT FOR THE WATER LEVEL SENSOR USING OPEN TRENCH AND DIRECTION BORE (FOR PORTION ACROSS THE ROAD). AFTER THE CONDUIT HAS BEEN INSTALLED, THE CONTRACTOR IS TO BACK FILL THE OPEN TRENCH AND REPAIR THE AREA OF EXCAVATION TO THE CONDITION FOUND.
12. THE CONTRACTOR IS TO INSTALL THE SRB PANEL AND ITS PAD FOUNDATION.
13. MANITOBA HYDRO IS TO CONNECT THE POWER CABLE FOR THE PANEL TO MH DISTRIBUTION TRANSFORMER.

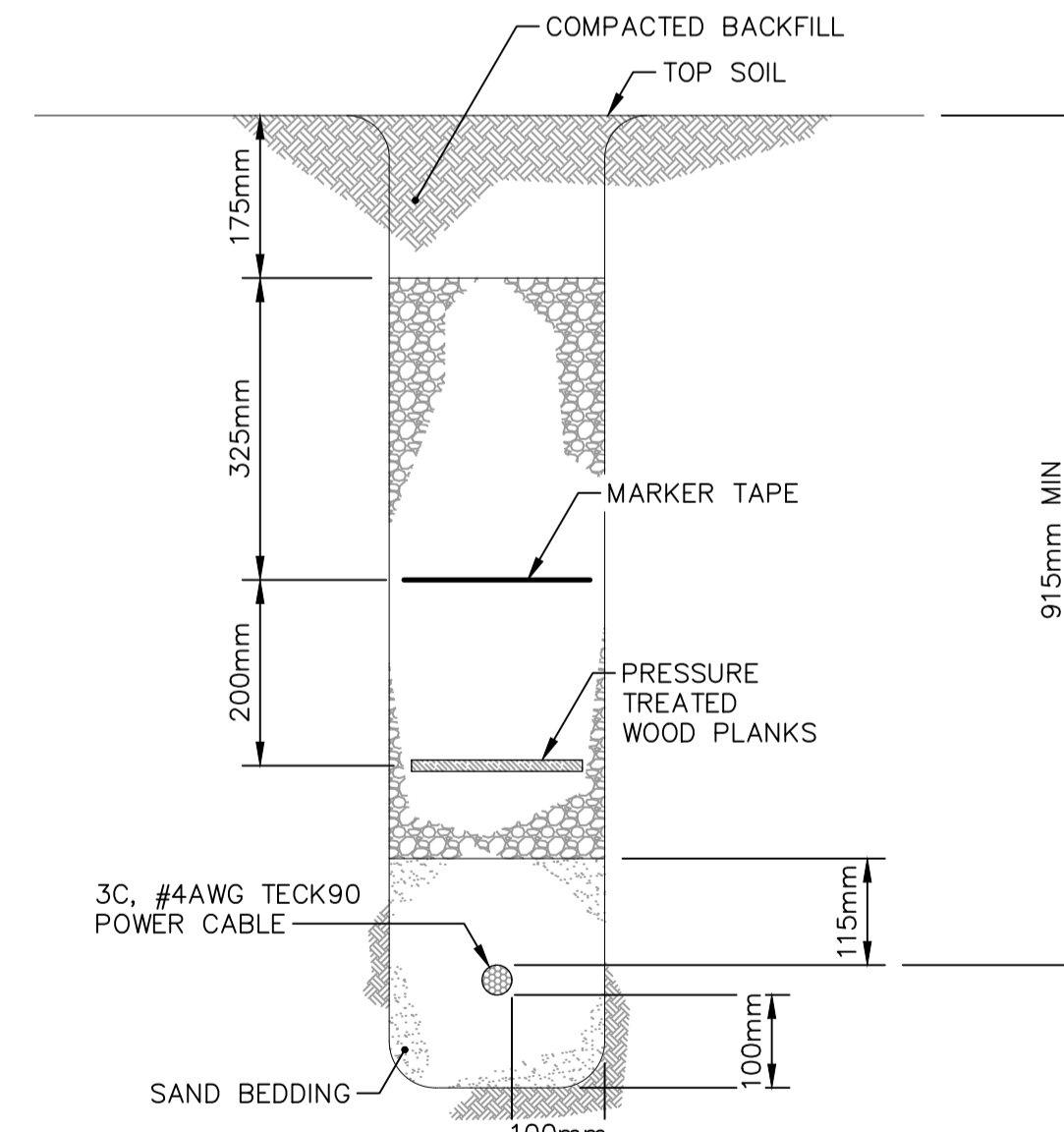
LEGEND:

- GAS — GAS LINE
- WATER — WATER SERVICE PIPE
- SEWER — SEWER SERVICE PIPE
- BURIED POWER CABLE
- - - BURIED SENSOR CABLE
- MH TRANSFORMER
- ⊞ ⊞ CP-B81 SRB
- ⊙ GROUND ROD



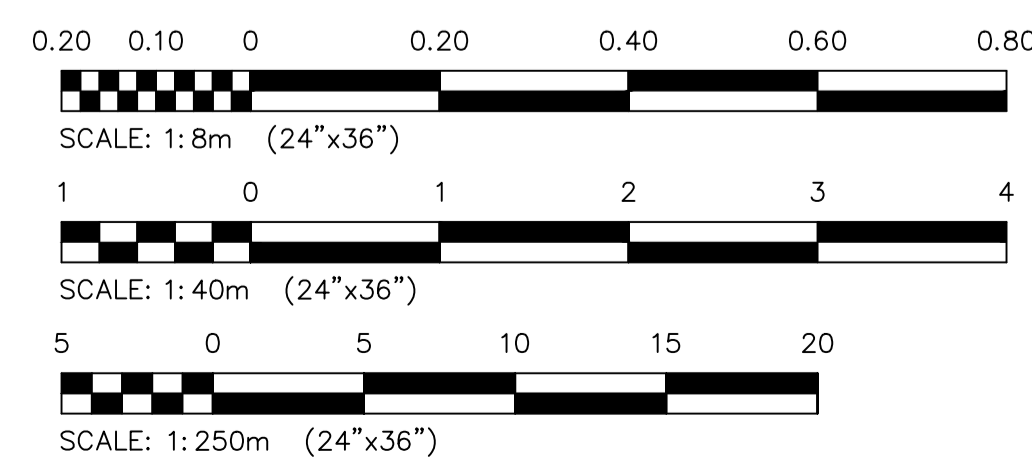
SITE PLAN – SITE 4
SCALE: 1: 250m

1 GROUNDING DETAIL
SCALE: 1: 40m



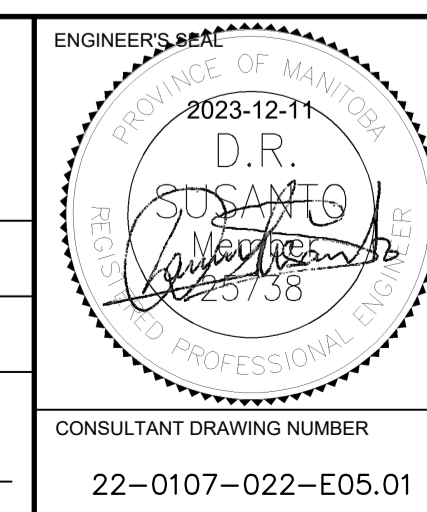
A CABLE TRENCH SECTION
SCALE: 1: 8m

10	---	---
9	---	---
8	---	---
7	---	---
6	---	---
5	---	---
4	---	---
3	---	---
2	1-0425B-E0003-001	ELECTRICAL – EQUIPMENT ARRANGEMENT AND DISTRIBUTION – OUTDOOR MONITORING ENCLOSURE – SITE 4
1	1-0425B-S0001-001	FOUNDATION PLAN AND DETAILS
NO.	DRAWING NUMBER	REFERENCE DRAWING TITLE
REFERENCE DRAWINGS		



B.M. ELEV.			
0	ISSUED FOR CONSTRUCTION	2023/12/08	CS
NO.	REVISIONS	DATE	BY

KGS GROUP	
DESIGNED BY: C. RABU	CHECKED BY: D. SUSANTO
DRAWN BY: R. GASPAR	APPROVED BY: D. SUSANTO
SCALE: HORIZONTAL NTS VERTICAL NTS	RELEASED FOR CONSTRUCTION
DATE: 2022/08/18	DATE:



THE CITY OF WINNIPEG
WATER AND WASTE DEPARTMENT
ENGINEERING DIVISION

**STORM RETENTION BASIN 3-5 (RIVERBEND)
SRB 2023 WATER LEVEL MONITORING UPGRADES
ELECTRICAL**

**SITE PLAN AND DETAILS
OUTDOOR MONITORING ENCLOSURE**

CONSULTANT DRAWING NUMBER: 22-0107-022-E05.01
CITY DRAWING NUMBER: 1-0425B-E0002-001
SHEET 1 OF 1

