



**GENERAL NOTES:**

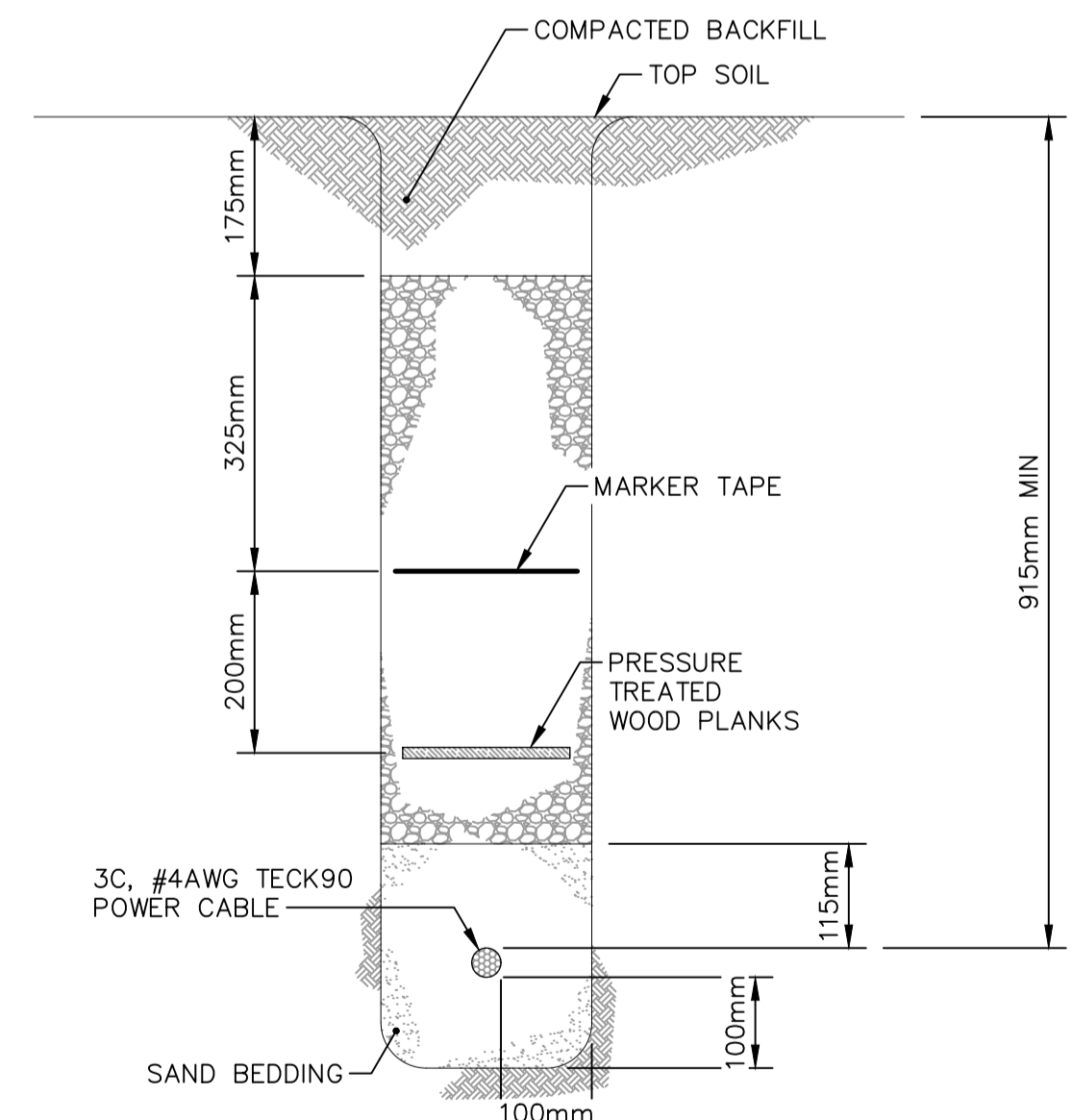
1. STORMWATER RETENTION BASIN MONITORING EQUIPMENT SHALL BE IN ELECTRICAL ENCLOSURE AND FLOOR MOUNTED ON A CONCRETE PAD. PROPOSED PAD LOCATION SHOWN IS APPROXIMATE AND TO BE CONFIRMED.
2. REFER TO STRUCTURAL DRAWING FOR PAD FOUNDATION DESIGN AND DETAILS.
3. WATER AND SEWER PIPE NETWORK PLAN (CAD FILE) AS PER CITY OF WINNIPEG DATED 2022/10/21.
4. ALL DIMENSIONS IN METERS UNLESS NOTED.
5. THE CABLE MUST BE NEW AND WITHOUT ANY SPLICE FROM MANITOBA HYDRO TRANSFORMER TO THE SRB PANEL.
6. THE LOCATION OF THE GROUNDING GRID IS TO BE DETERMINED ON THE FIELD.
7. THE SENSOR CABLE IS TO BE INSTALLED IN 25.4mm RIGID PVC CONDUIT AND PLACED 915mm BELOW GRADE.
8. THE CONTRACTOR IS TO EXCAVATE THE AREA WHERE THE POWER CABLE FOR THE PANEL IS TO BE INSTALLED USING OPEN TRENCH AND INSTALL THE POWER CABLE AS INDICATED IN THE CABLE TRENCH DETAIL. AFTER THE POWER CABLE HAS BEEN INSTALLED, THE CONTRACTOR IS TO BACK FILL THE TRENCH AND REPAIR THE AREA OF EXCAVATION TO THE CONDITION FOUND.
9. THE CONTRACTOR IS TO EXCAVATE AND INSTALL THE RIGID PVC CONDUIT FOR THE WATER LEVEL SENSOR USING OPEN TRENCH. AFTER THE CONDUIT HAS BEEN INSTALLED, THE CONTRACTOR IS TO BACK FILL THE OPEN TRENCH AND REPAIR THE AREA OF EXCAVATION TO THE CONDITION FOUND.
10. THE CONTRACTOR IS TO INSTALL THE SRB PANEL AND ITS PAD FOUNDATION.
11. MANITOBA HYDRO IS TO CONNECT THE POWER CABLE FOR THE PANEL TO MH DISTRIBUTION TRANSFORMER.

**LEGEND:**

- GAS — GAS LINE
- WATER — WATER SERVICE PIPE
- SEWER — SEWER SERVICE PIPE
- - - BURIED POWER CABLE
- - - BURIED SENSOR CABLE
- MH TRANSFORMER
- CP-B81 SRB
- GROUND ROD

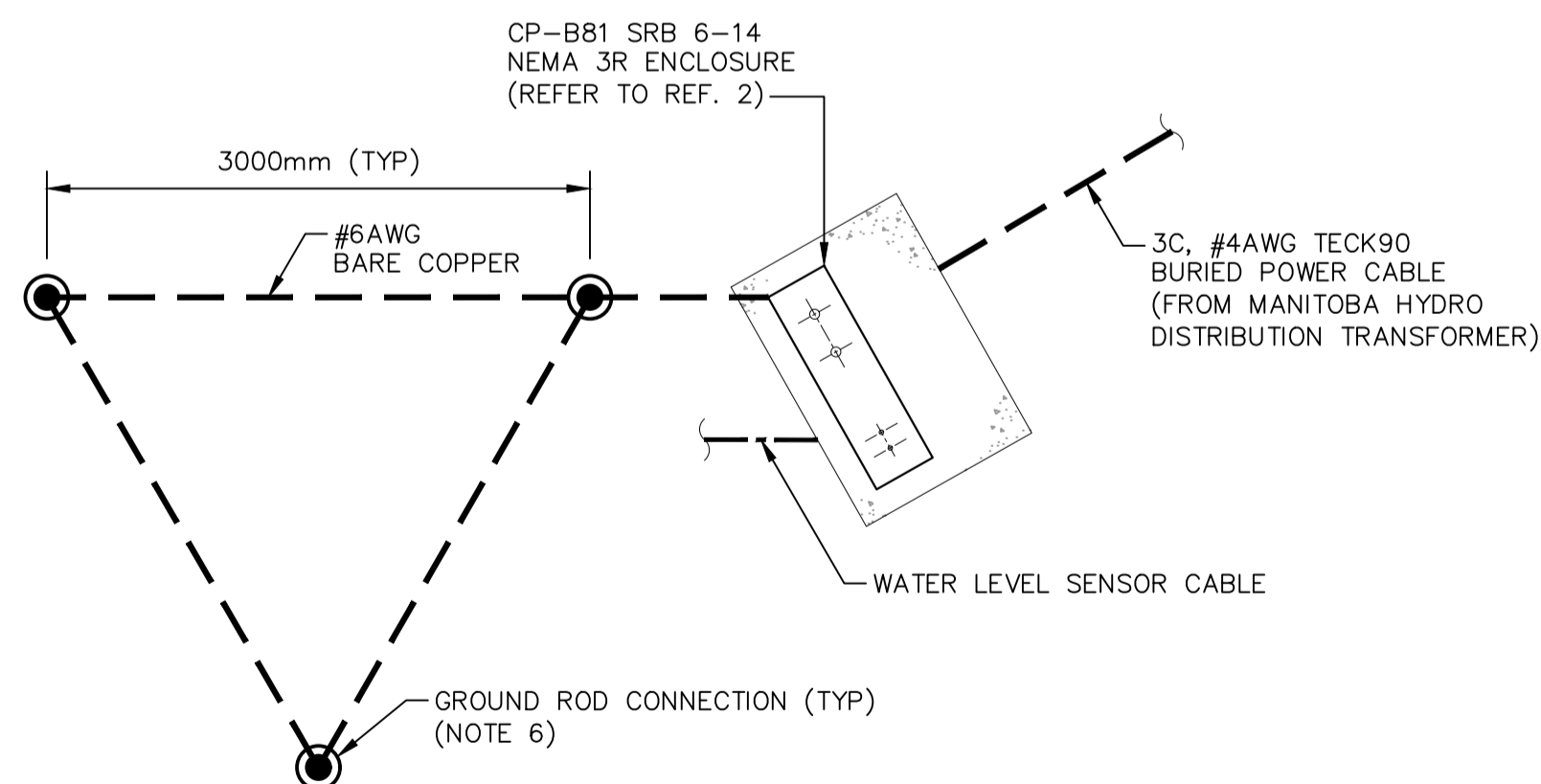
**SITE PLAN – SITE 3**

SCALE: 1: 500m



**A CABLE TRENCH SECTION**

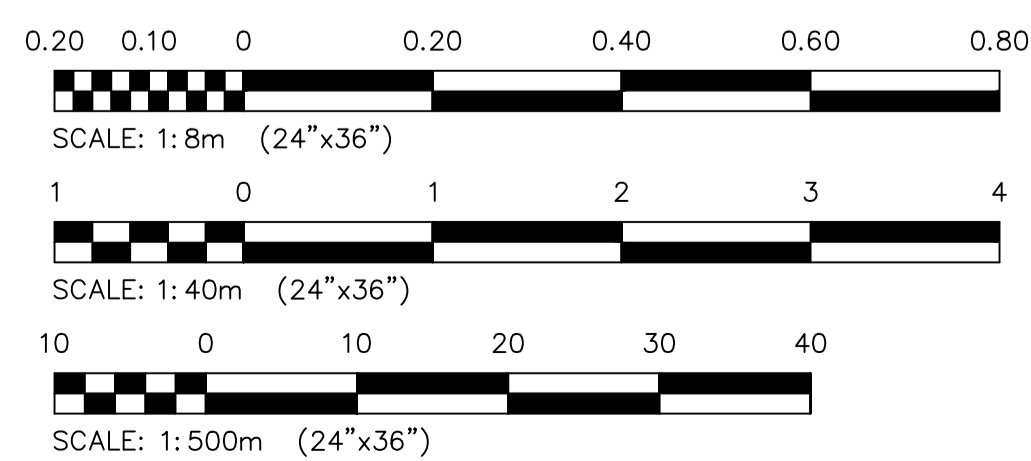
SCALE: 1: 8m



**1 GROUNDING DETAIL**

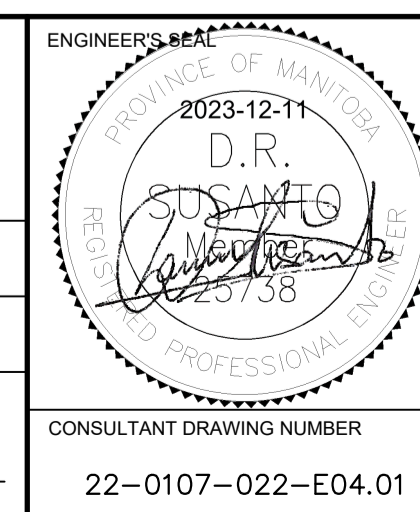
SCALE: 1: 40m

10	—	—
9	—	—
8	—	—
7	—	—
6	—	—
5	—	—
4	—	—
3	—	—
2	1-0524B-E0002-001	ELECTRICAL – EQUIPMENT ARRANGEMENT AND DISTRIBUTION – OUTDOOR MONITORING ENCLOSURE – SITE 3
1	1-0524B-S0001-001	SRB EXISTING CONCRETE CHAMBER PLAN AND SECTION
NO.	DRAWING NUMBER	REFERENCE DRAWING TITLE
REFERENCE DRAWINGS		



B.M. ELEV.			
NO.	ISSUED FOR CONSTRUCTION	DATE: 2023/12/08	BY: [Signature]
REVISIONS			

<b>KGS GROUP</b>	
DESIGNED BY: C. RABU	CHECKED BY: D. SUSANTO
DRAWN BY: R. GASPAR	APPROVED BY: D. SUSANTO
SCALE: HORIZONTAL: NTS VERTICAL: NTS	RELEASED FOR CONSTRUCTION
DATE: 2022/08/18	DATE:
PLOT DATE: 2023 12 08	



**THE CITY OF WINNIPEG**  
WATER AND WASTE DEPARTMENT  
ENGINEERING DIVISION

**STORM RETENTION BASIN 6-14 WEST FORT GARRY BUSINESS SRB 2023 WATER LEVEL MONITORING UPGRADES ELECTRICAL**

**SITE PLAN AND DETAILS  
OUTDOOR MONITORING ENCLOSURE**

CITY DRAWING NUMBER: **1-0524B-E0001-001** SHEET **1** OF **1**

**ENGINEERS  
GEOSCIENTISTS  
MANITOBA**  
Certificate of Authorization  
KGS Group  
No. 245