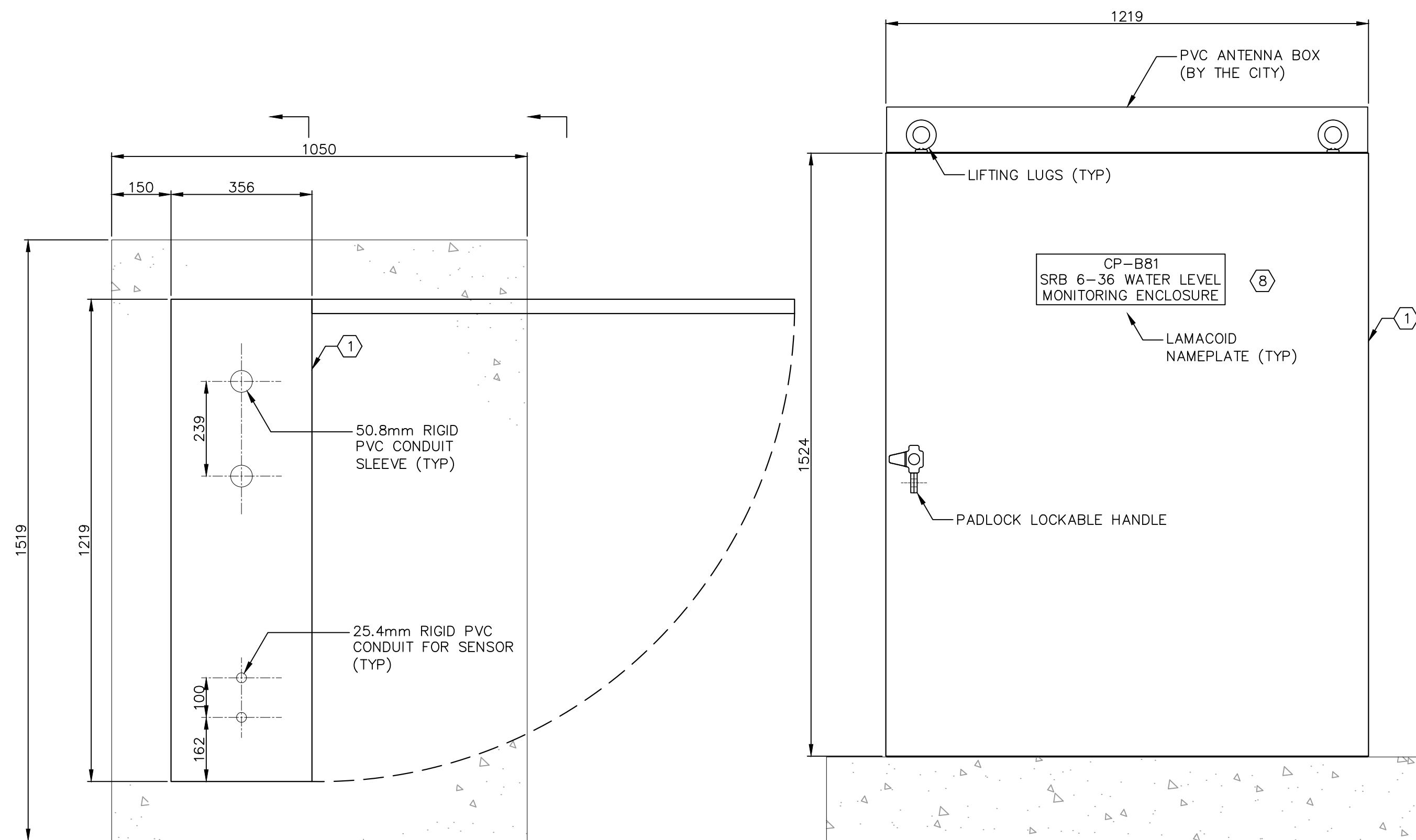


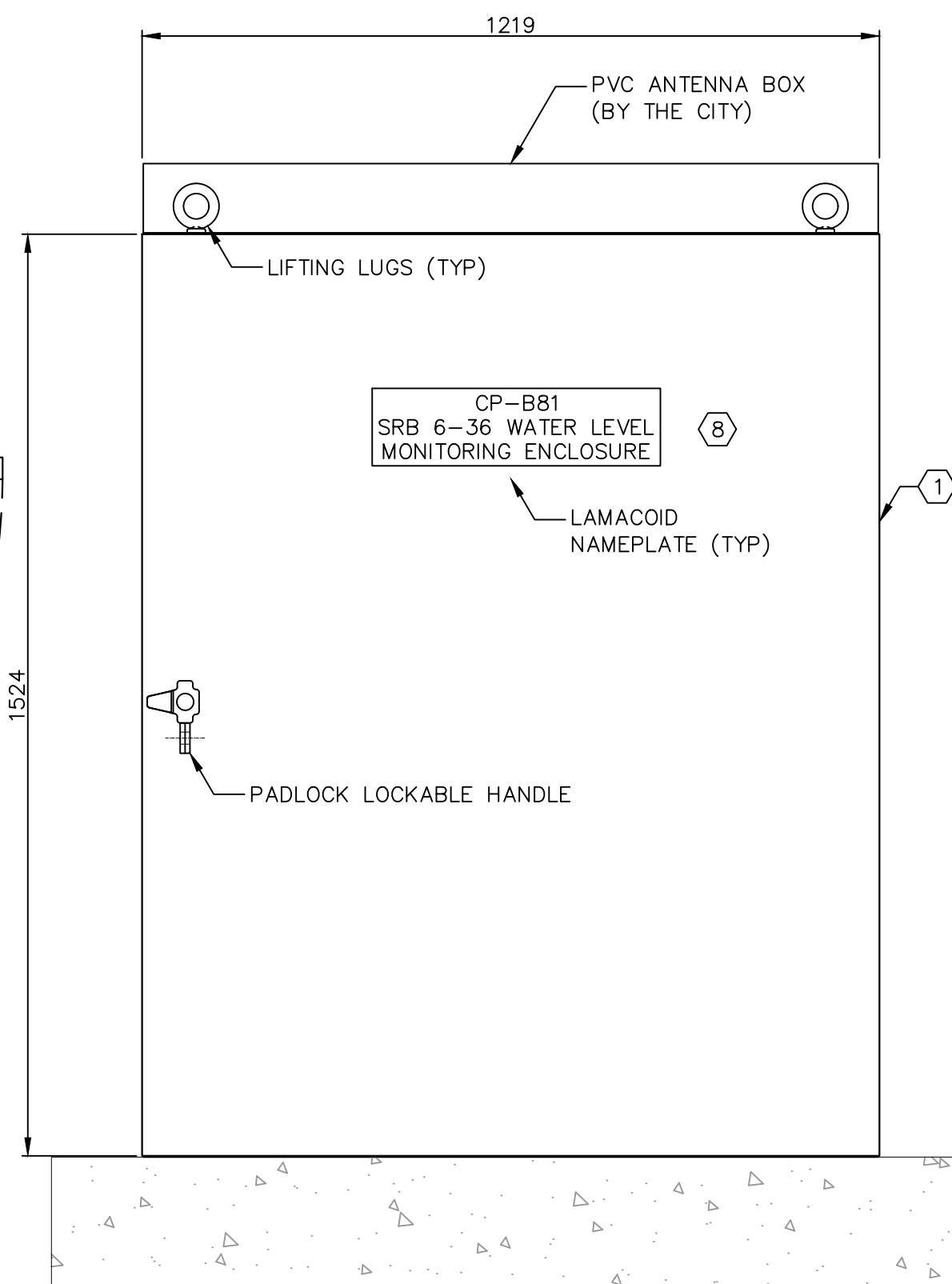
POWER DISTRIBUTION SINGLE LINE
SCALE: NTS

GENERAL NOTES:

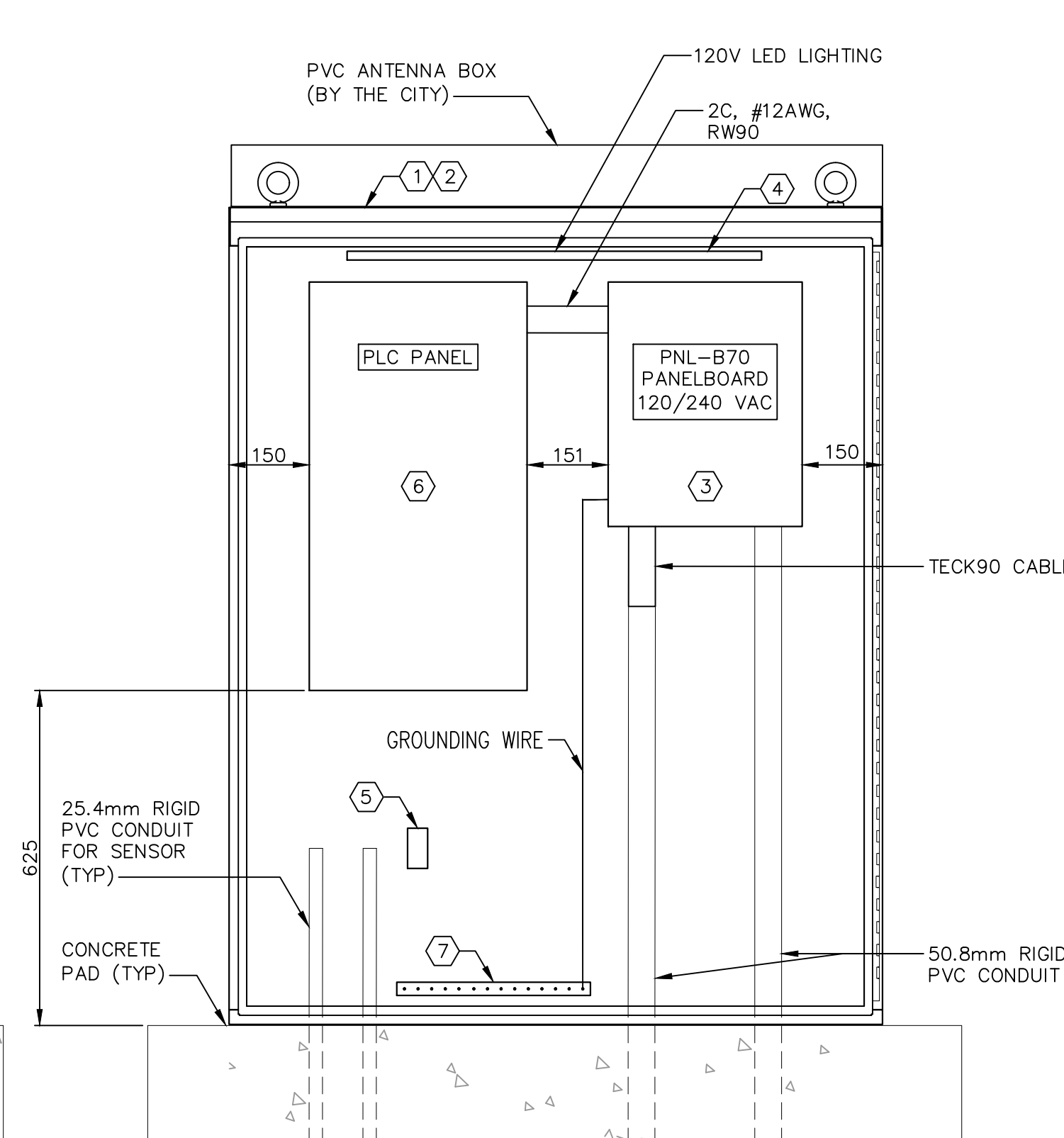
- VOLTAGE DROP FROM MH TRANSFORMER TO SRB PANEL MUST NOT EXCEED 3% (i.e. 95m).
- LED LIGHTING INSIDE ENCLOSURE SHALL BE TIED TO A DOOR CONTACT SWITCH.
- ALL EQUIPMENT INSTALLED MUST BE CSA OR CUL APPROVED.
- THE SRB PANEL MUST BE NEMA 3R RATED AND SUITABLE FOR OUTDOOR INSTALLATION.
- ALL CABLES INSTALLED MUST BE NEW CABLES. CABLE FROM MANITOBA HYDRO TRANSFORMER TO THE PANEL MUST BE A CONTINUOUS RUN WITHOUT ANY SPLICE.
- THE POWER CABLE FROM MANITOBA HYDRO DISTRIBUTION TRANSFORMER TO SRB PANEL MUST BE ARMoured AND SUITABLE FOR DIRECT BURIED. ALL CONDUCTORS MUST BE STRANDED COPPER CONDUCTORS.
- THE INCOMING CABLE MUST BE BOTTOM ENTRY UNLESS INDICATED OTHERWISE.
- ALL DIMENSIONS IN MILLIMETERS UNLESS NOTED.
- THE ELECTRICAL INSTALLATION MUST BE IN ACCORDANCE TO THE LATEST CEC AND APPLICABLE CODE.



PLAN VIEW
SCALE: 1:10



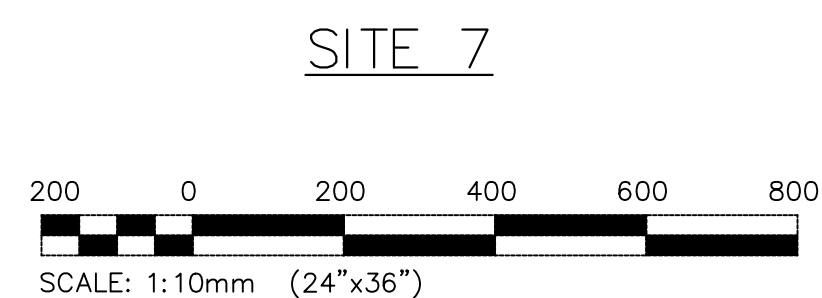
A FRONT VIEW (DOOR CLOSED)
SCALE: 1:10
NOTES: FRONT DOOR, AND CABLING NOT SHOWN



B FRONT VIEW (DOOR OPEN)
SCALE: 1:10
NOTES: FRONT DOOR, AND CABLING NOT SHOWN

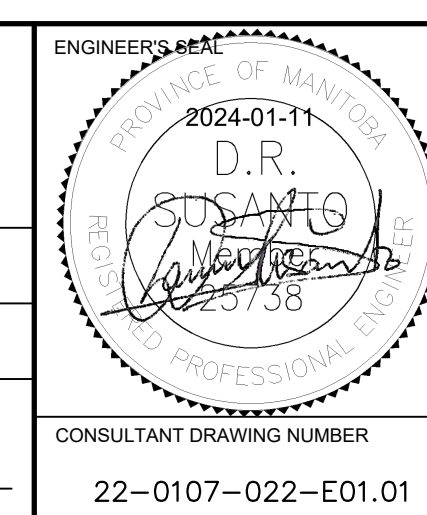
ITEM #	DESCRIPTION	BRAND	QUANTITY	REMARKS
①	NEMA 3R PAD MOUNTED 1524H X 1219W X 356D 12 GAUGE STEEL, ASA 61 GREY PAINT	STRONG ELECTRIC	1	
②	REMOVEABLE BACK PAN, 12 GAUGE STEEL, ASA 61 WHITE PAINT	STRONG ELECTRIC	1	
③	ELECTRICAL PANEL, 456H x 362W x 95D 100A 12CC 14kAIC 120/240V 1Ø 3W COPPER BUS 60A 2P MAIN BREAKER SERVICE ENTRANCE BARRIER CHOM1224M60GC	SCHNEIDER ELECTRIC	1	
④	LED LIGHT STRIP 24WATTS, 51H x 1194L x 51W, H-6431	LITHONIA LIGHTING	1	
⑤	20AMPS GFCI DUPLEX RECEPTACLES	LEVITON	1	
⑥	PLC PANEL, 762H x 406W x 203D, CSD30168	HOFFMAN	1	SUPPLIED AND INSTALLED BY THE CITY
⑦	GROUNDING BAR		1	
⑧	HARD PLASTIC LAMACOID, WHITE BACKGROUND WITH BLACK TEXT, MECHANICALLY ATTACHED	(GENERIC)	3	

NO.	DRAWING NUMBER	REFERENCE DRAWING TITLE
10	-	-
9	-	-
8	-	-
7	-	-
6	-	-
5	-	-
4	-	-
3	-	-
2	1-0546B-E0001-001	ELECTRICAL - SITE PLAN AND DETAILS - OUTDOOR MONITORING ENCLOSURE - SITE 7
1	1-0546B-S0001-001	FOUNDATION PLAN AND DETAILS



NO.	ISSUED FOR CONSTRUCTION	DATE	BY
0	ISSUED FOR CONSTRUCTION	2024/01/08	CS

DESIGNED BY	CHECKED BY
C. RABU	D. SUSANTO
DRAWN BY	APPROVED BY
R. GASPAR	D. SUSANTO
SCALE:	RELEASED FOR CONSTRUCTION
HORIZONTAL: NTS	
VERTICAL: NTS	
DATE	DATE
2023/03/09	



ENGINEERS GEOSCIENTISTS MANITOBA
Certificate of Authorization
KGS Group
No. 245

THE CITY OF WINNIPEG
WATER AND WASTE DEPARTMENT
ENGINEERING DIVISION

**STORM RETENTION BASIN 6-36 (WAVERLEY WEST)
SRB 2023 WATER LEVEL MONITORING UPGRADES
ELECTRICAL**

**EQUIPMENT ARRANGEMENT AND DISTRIBUTION
OUTDOOR MONITORING ENCLOSURE**

CONSULTANT DRAWING NUMBER: 22-0107-022-E01.01
CITY DRAWING NUMBER: 1-0546B-E0002-001
SHEET 1 OF 1