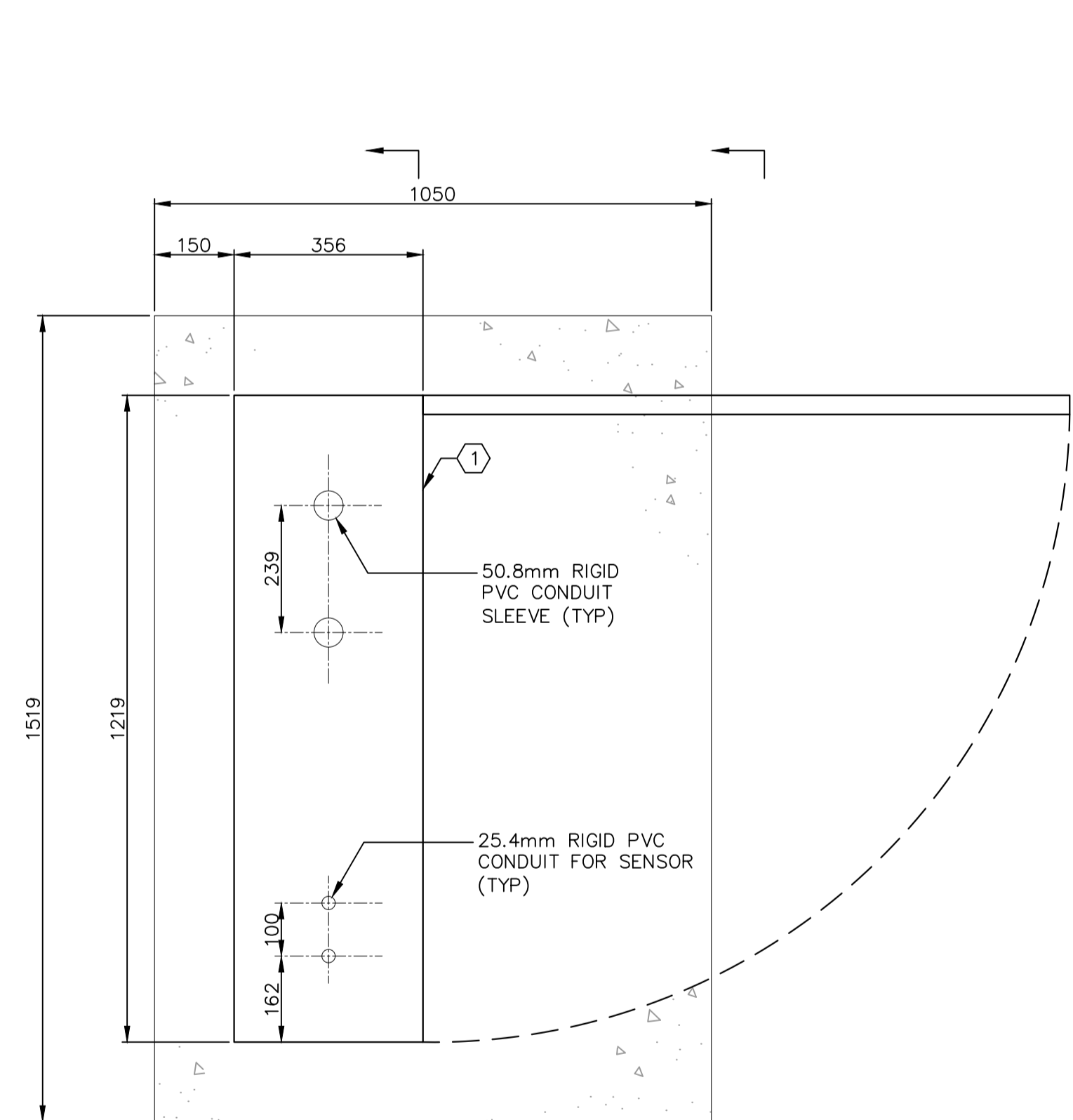
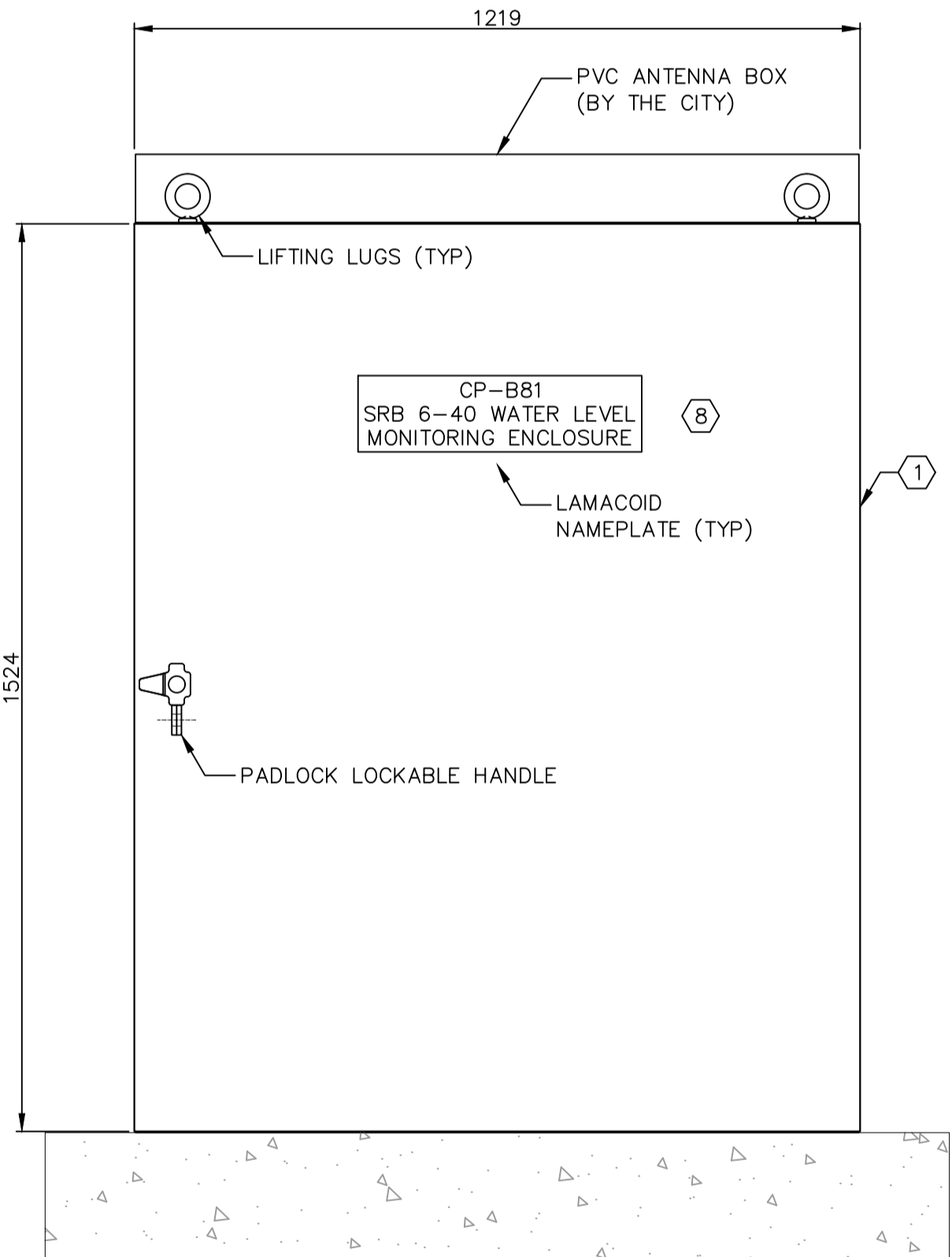


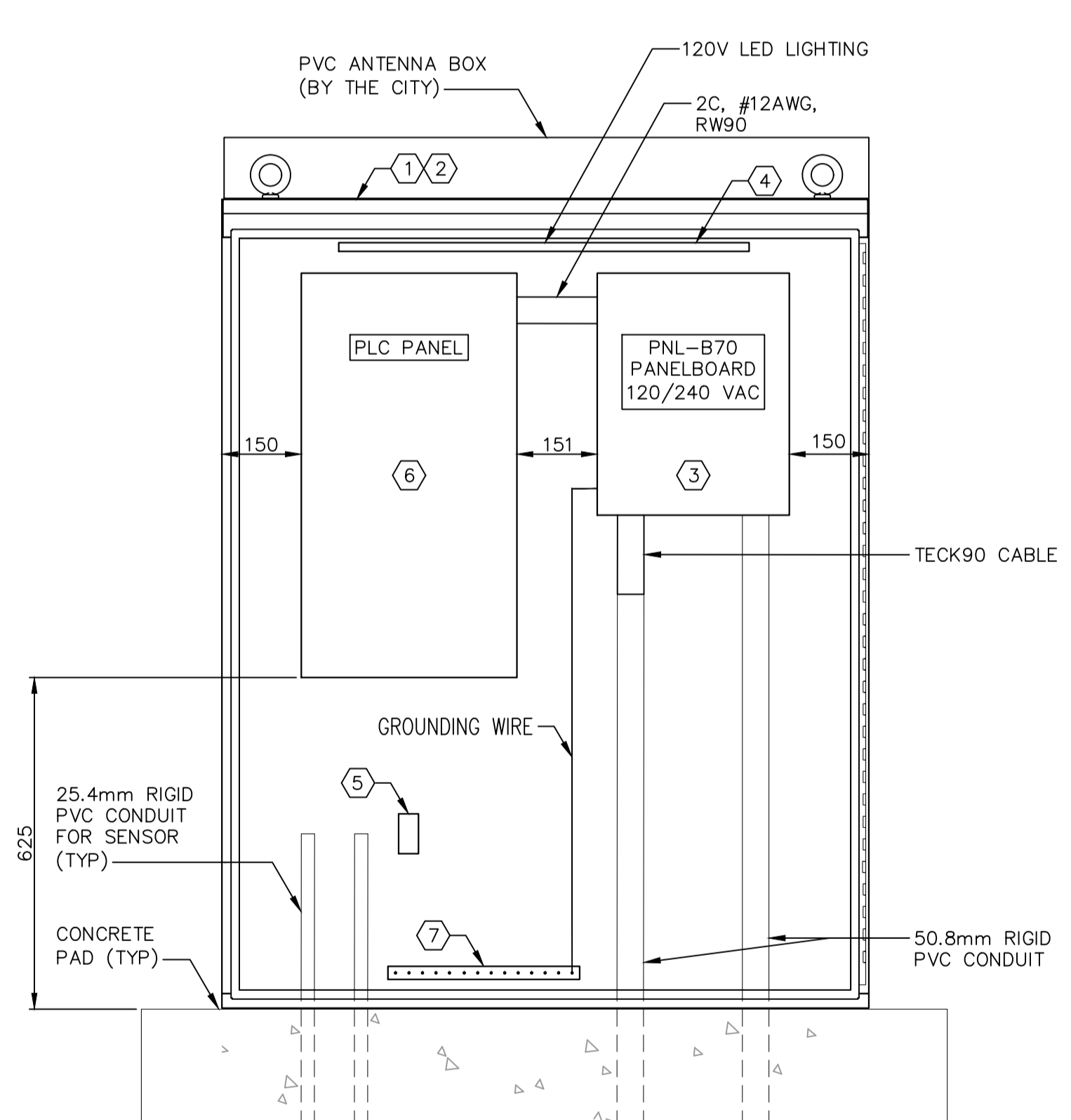
POWER DISTRIBUTION SINGLE LINE
SCALE: NTS



PLAN VIEW
SCALE: 1:10



FRONT VIEW (DOOR CLOSED)
SCALE: 1:10
NOTES: FRONT DOOR, AND CABLING NOT SHOWN

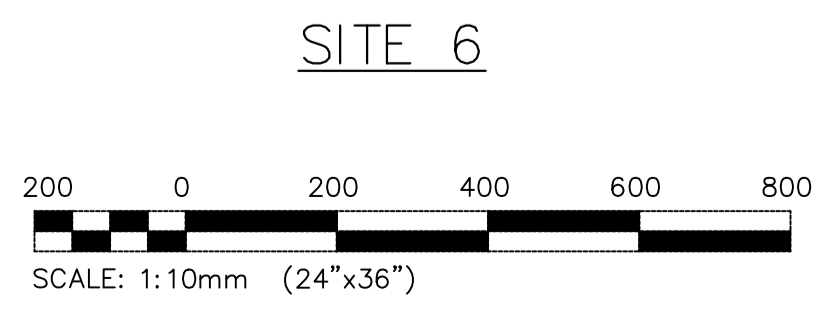


FRONT VIEW (DOOR OPEN)
SCALE: 1:10
NOTES: FRONT DOOR, AND CABLING NOT SHOWN

- GENERAL NOTES:**
- VOLTAGE DROP FROM MH TRANSFORMER TO SRB PANEL MUST NOT EXCEED 3% (i.e. 95m).
 - LED LIGHTING INSIDE ENCLOSURE SHALL BE TIED TO A DOOR CONTACT SWITCH.
 - ALL EQUIPMENT INSTALLED MUST BE CSA OR CUL APPROVED.
 - THE SRB PANEL MUST BE NEMA 3R RATED AND SUITABLE FOR OUTDOOR INSTALLATION.
 - ALL CABLES INSTALLED MUST BE NEW CABLES. CABLE FROM MANITOBA HYDRO TRANSFORMER TO THE PANEL MUST BE A CONTINUOUS RUN WITHOUT ANY SPLICE.
 - THE POWER CABLE FROM MANITOBA HYDRO DISTRIBUTION TRANSFORMER TO SRB PANEL MUST BE ARMoured AND SUITABLE FOR DIRECT BURIED. ALL CONDUCTORS MUST BE STRANDED COPPER CONDUCTORS.
 - THE INCOMING CABLE MUST BE BOTTOM ENTRY UNLESS INDICATED OTHERWISE.
 - ALL DIMENSIONS IN MILLIMETERS UNLESS NOTED.
 - THE ELECTRICAL INSTALLATION MUST BE IN ACCORDANCE TO THE LATEST CEC AND APPLICABLE CODE.

ITEM #	DESCRIPTION	BRAND	QUANTITY	REMARKS
①	NEMA 3R PAD MOUNTED 1524H X 1219W X 356D 12 GAUGE STEEL, ASA 61 GREY PAINT	STRONG ELECTRIC	1	
②	REMOVEABLE BACK PAN, 12 GAUGE STEEL, ASA 61 WHITE PAINT	STRONG ELECTRIC	1	
③	ELECTRICAL PANEL, 456H x 362W x 95D 100A 12CC 14kAIC 120/240V 1Ø 3W COPPER BUS 60A 2P MAIN BREAKER SERVICE ENTRANCE BARRIER CHOM1224M60GC	SCHNEIDER ELECTRIC	1	
④	LED LIGHT STRIP 24WATTS, 51H x 1194L x 51W, H-6431	LITHONIA LIGHTING	1	
⑤	20AMPS GFCI DUPLEX RECEPTACLES	LEVITON	1	
⑥	PLC PANEL, 762H x 406W x 203D, CSD30168	HOFFMAN	1	SUPPLIED AND INSTALLED BY THE CITY
⑦	GROUNDING BAR		1	
⑧	HARD PLASTIC LAMACOID, WHITE BACKGROUND WITH BLACK TEXT, MECHANICALLY ATTACHED	(GENERIC)	3	

10	-	-
9	-	-
8	-	-
7	-	-
6	-	-
5	-	-
4	-	-
3	-	-
2	1-0550B-E0003-001	ELECTRICAL - SITE PLAN AND DETAILS - OUTDOOR MONITORING ENCLOSURE - SITE 6
1	1-0550B-S0001-001	EXISTING CONCRETE PLAN AND SECTIONS
NO.	DRAWING NUMBER	REFERENCE DRAWING TITLE



B.M. ELEV.	
DESIGNED BY	C. RABU
CHECKED BY	D. SUSANTO
DRAWN BY	R. GASPAR
APPROVED BY	D. SUSANTO
SCALE: HORIZONTAL	NTS
SCALE: VERTICAL	NTS
ISSUED FOR CONSTRUCTION	2024/01/08
DATE	2023/03/09

KGS GROUP

DESIGNED BY: C. RABU
CHECKED BY: D. SUSANTO
DRAWN BY: R. GASPAR
APPROVED BY: D. SUSANTO
SCALE: HORIZONTAL: NTS
SCALE: VERTICAL: NTS
ISSUED FOR CONSTRUCTION: 2024/01/08
DATE: 2023/03/09

PROVINCE OF MANITOBA
2024-01-11
D.R.
SUSANTO
REGISTERED PROFESSIONAL ENGINEER
223738

THE CITY OF WINNIPEG
WATER AND WASTE DEPARTMENT
ENGINEERING DIVISION

STORM RETENTION BASIN 6-40 (WAVERLEY WEST)
SRB 2023 WATER LEVEL MONITORING UPGRADES
ELECTRICAL

EQUIPMENT ARRANGEMENT AND DISTRIBUTION
OUTDOOR MONITORING ENCLOSURE

CONSULTANT DRAWING NUMBER: 22-0107-022-E01.01
CITY DRAWING NUMBER: 1-0550B-E0004-001
SHEET 1 OF 1