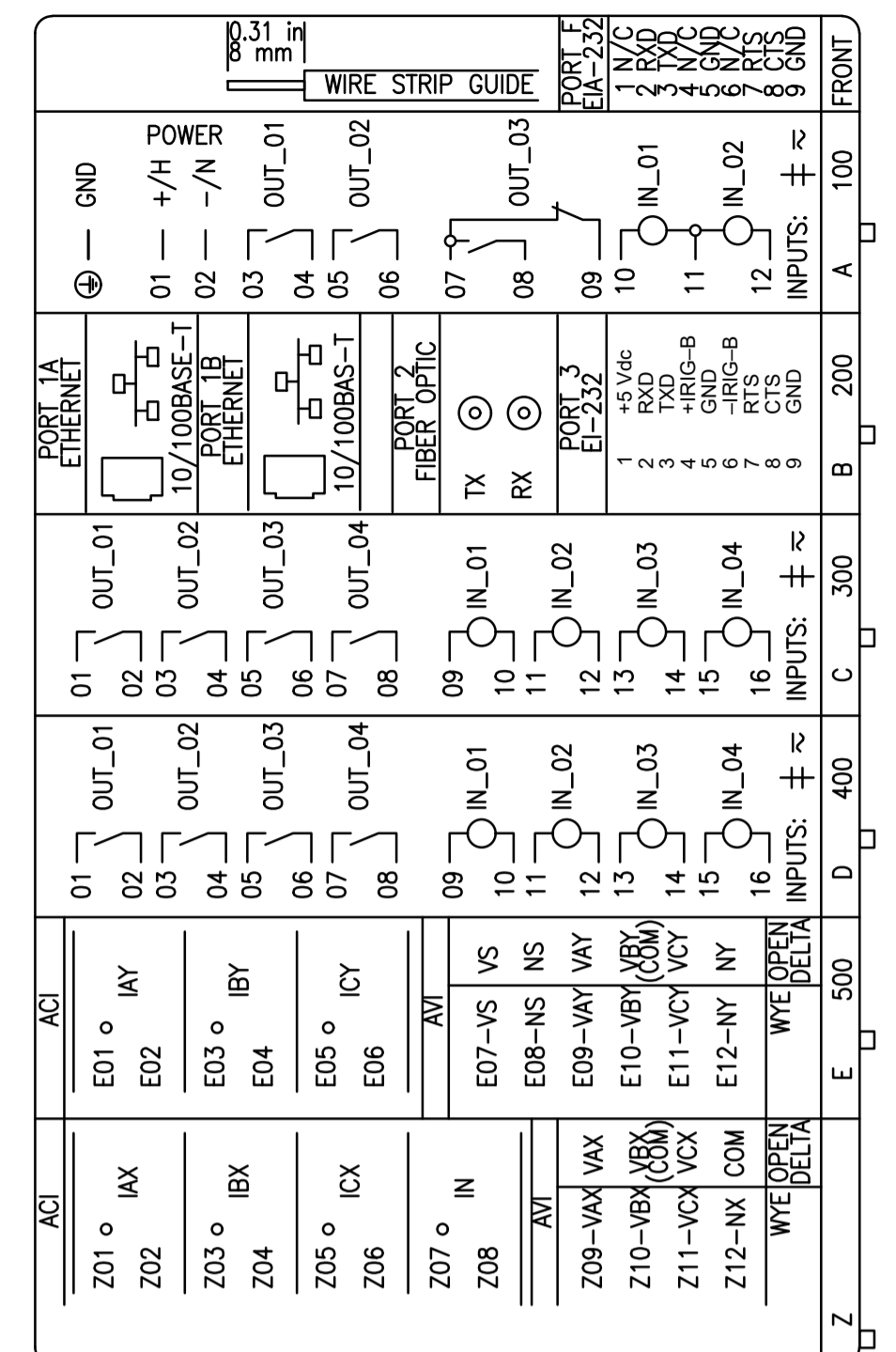
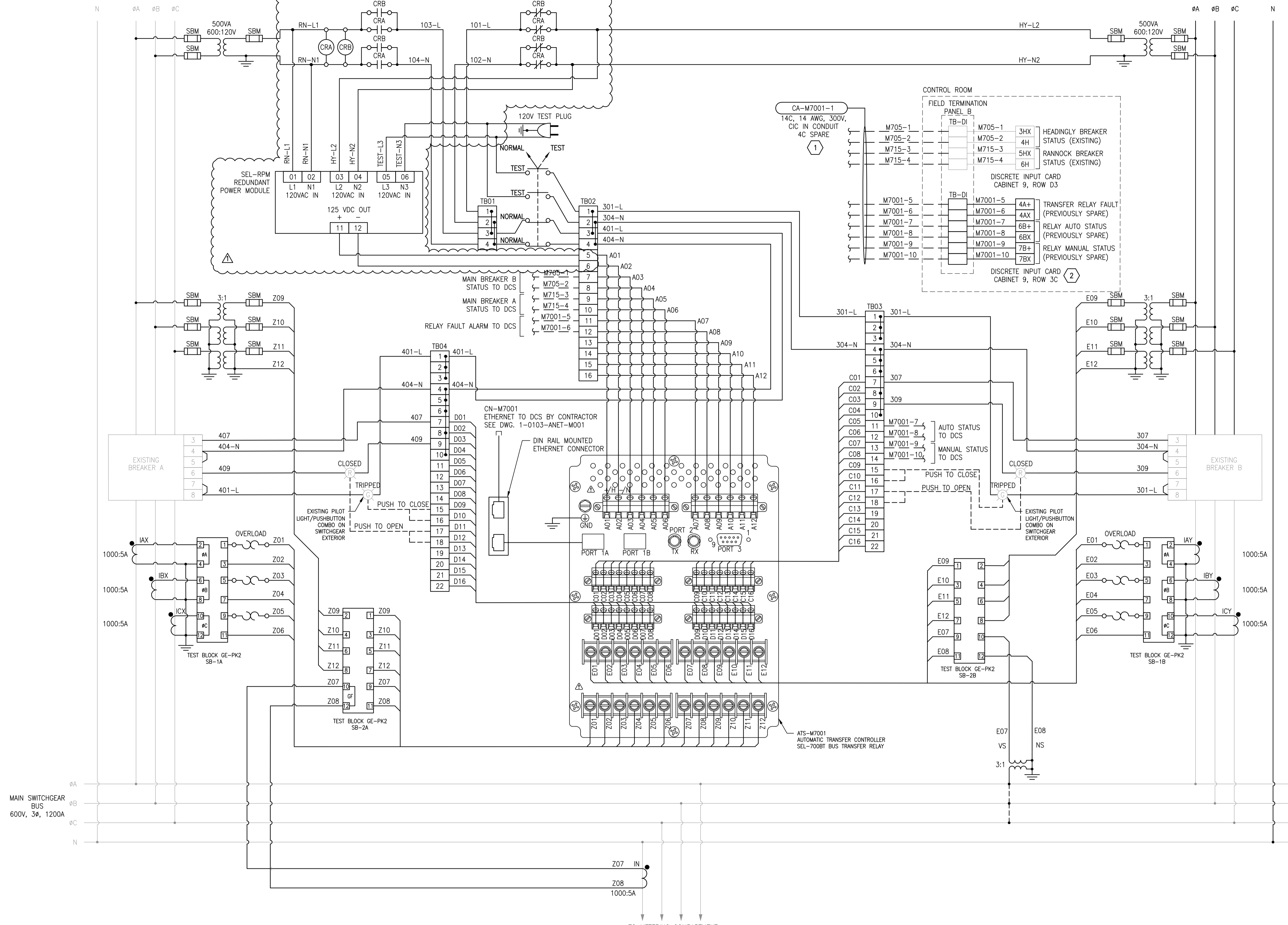


EXISTING UTILITY FEED "A"
FROM RANNOCK SUBSTATION
600V, 3Ø, 4W

NEW UTILITY FEED "B"
FROM HEADINGLY SUBSTATION
600V, 3Ø, 4W



SEL-700BT TERMINAL LEGEND

KEY NOTES:

- CAP, LABEL, AND COIL SPARE CONDUCTORS IN PANEL FTP-B.
- CONTRACTOR TO ADJUST INPUT JUMPERS FOR 120V INPUT ON NEW DI CONNECTIONS AS NEEDED.

NOTES:

- ALL ITEMS SHOWN BOLT INDICATE WORK TO BE COMPLETED. ALL ITEMS SHOWN AS LIGHT ARE EXISTING CONDITIONS.
- SHUNT TRIP CONTROL WIRING BASED ON HISTORICAL INFORMATION, CONTRACTOR TO CONFIRM, TEST, AND DOCUMENT BREAKER CONTROL WIRING CONNECTIONS WITH EXISTING WIRING PRIOR TO DEMOLITION.
- STRANDED WIRE TERMINATIONS ARE NOT PERMITTED. USE APPROPRIATELY SIZED FERRULES FOR ALL TERMINATIONS.
- THE WIRING DIAGRAM SHOWN IS FOR CONNECTION INTENT. IT IS RESPONSIBILITY OF THE SYSTEM INTEGRATOR TO VERIFY ALL EQUIPMENT LABELING AND TERMINAL CONNECTIONS AND PRODUCE A DETAILED WIRING DIAGRAM SHOP DRAWING SUBMISSION. IT IS THE RESPONSIBILITY OF THE SYSTEM INTEGRATOR TO PROVIDE COMPONENTS NECESSARY TO PROVIDE A COMPLETE AND OPERATIONAL SYSTEM.
- CONTRACTOR TO COORDINATE TRANSFER RELAY PROGRAMMING AND SOFTWARE SIGNAL ADDRESSING WITH MPE AND CITY REPRESENTATIVES.
- THE CONTRACTOR IS RESPONSIBLE FOR VERIFYING POLARITY AND WIRING.
- CONTRACTOR TO PROVIDE NEW INSTRUMENT TRANSFORMERS AS SHOWN. CONTRACTOR TO VERIFY ALL INSTRUMENT TRANSFORMER SIZES WITH MANUFACTURER PRIOR TO PROCUREMENT AND INSTALLATION.
- TRANSFER RELAY AND ASSOCIATED EQUIPMENT ARE TO BE LOCATED IN THE EXISTING TRANSFER COMPARTMENT OF THE MAIN SWITCHGEAR AFTER DEMOLITION OF EXISTING CONTROLS. CONTRACTOR TO PROVIDE COMPLETE PANEL LAYOUT SHOP DRAWINGS FOR INSTALLATION OF EQUIPMENT IN EXISTING AUTOMATIC TRANSFER COMPARTMENT OF MAIN SWITCHGEAR FOR REVIEW AND APPROVAL PRIOR TO COMMENCING WORK.
- TEST SWITCH AND TEST PLUG TO BE MOUNTED IN LV COMPARTMENT.

9		
8		
7		
6		
5		
4		
3		
2		
1		
NO.	DRAWING NUMBER	REFERENCE DRAWINGS

**ENGINEERS
GEOLOGISTS
MANITOBA**

Certificate of Authorization
MPE, a division of Englobe Corp.
No. 4968 Date: **JULY 9, 2024**

02	ISSUED FOR ADDENDUM 1	2024-07-09	J.A.S., R.G.O.
01	ISSUED FOR CONSTRUCTION	2024-06-20	J.A.S., R.G.O.
NO.	REVISIONS	DATE	DESIGN CHECK

MPE
a division of Englobe

DESIGNED BY: J.A.S., R.G.O. CHECKED BY: R.G.O.
DRAWN BY: N.O.W., J.A.S. APPROVED BY: R.G.O.
SCALE: NOT TO SCALE RELEASED FOR CONSTRUCTION BY: [Signature]
DATE: 2024/06/20

CONSULTANT NO.:

ENGINEER'S SEAL

PROVINCE OF MANITOBA
R.G. OFSTIE
Member
44405
REGISTERED PROFESSIONAL ENGINEER

JULY 9, 2024

REV 02

THE CITY OF WINNIPEG
WATER AND WASTE DEPARTMENT

PERIMETER ROAD PUMPING STATION
2024 UPGRADES
THREE LINE DIAGRAM
UTILITY TRANSFER SYSTEM
ATS-M7001

CITY DRAWING NUMBER: **1-0103-ETLD-M001** SHEET: **001** OF **02** SIZE: **A**

1-0103-EWDG-M001-001-DC.dwg