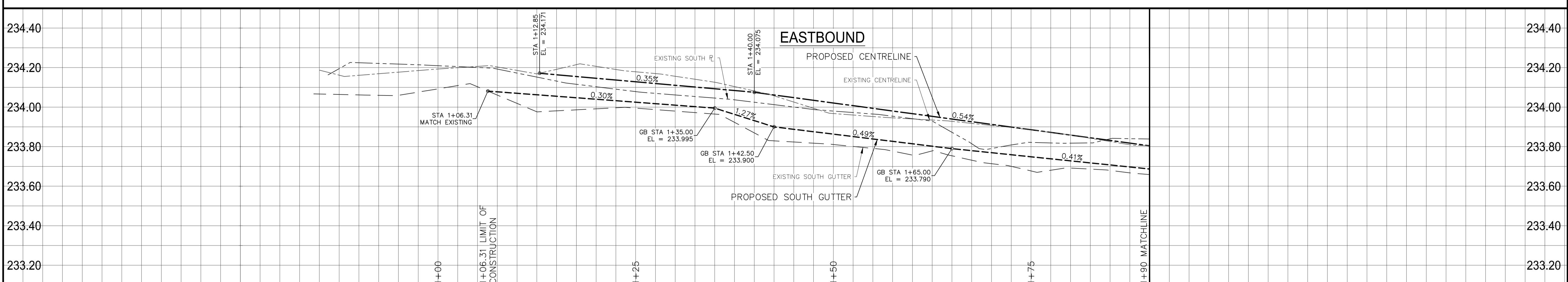
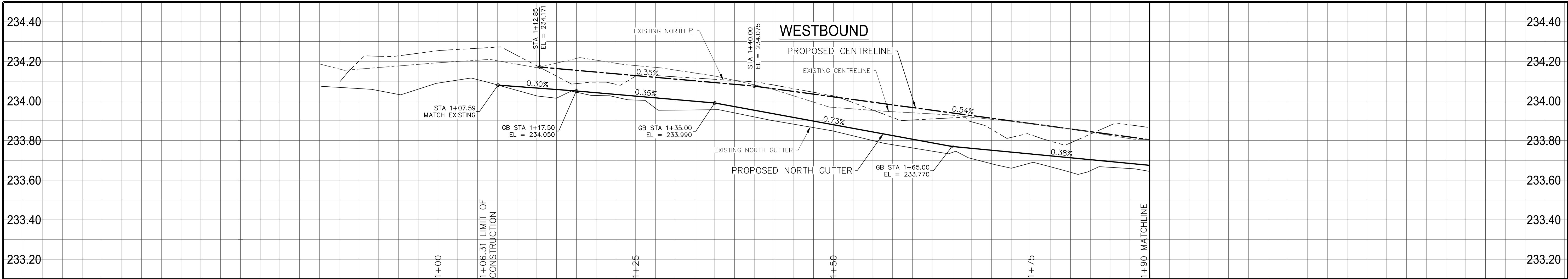
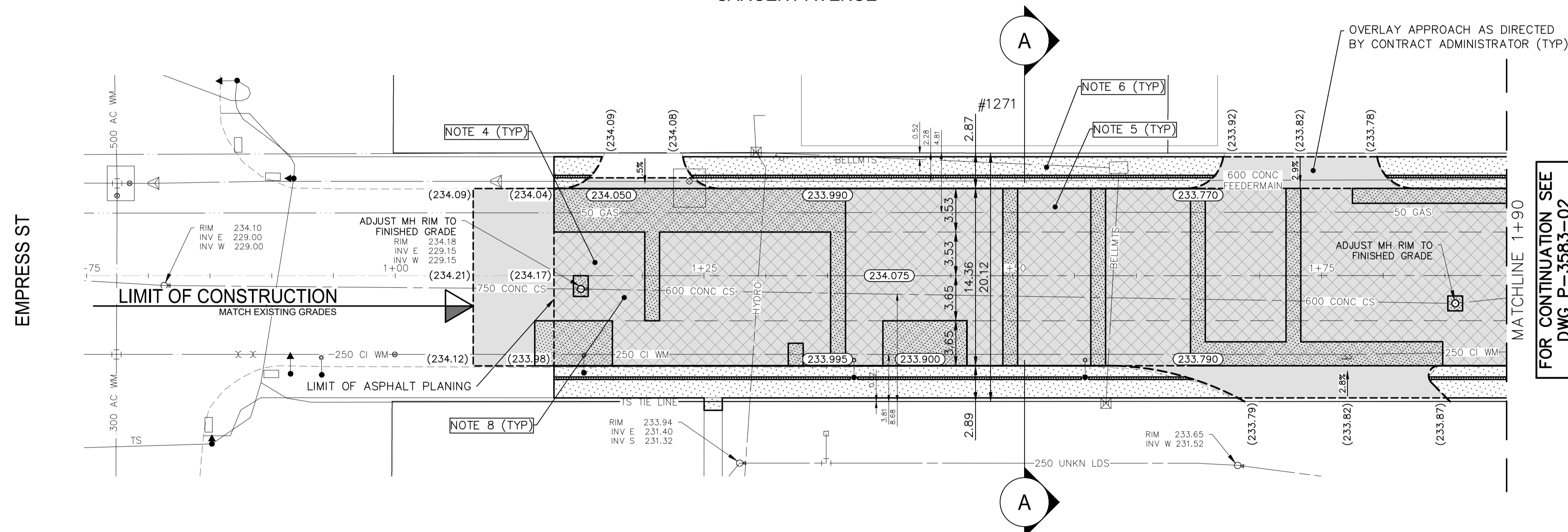


Jan 09, 2025 - 1:21pm  
 P:\2024\CA0022819\_5515 - Pavement Renewals Sargent, Elice V02 Drawings\03 - Work\_Dwg\CA0022819\_5515\_Sargent\_Ave\_Plan&Profile.dwg - tab:504-2024\_Drawing\_P-3583-01-RA



**SARGENT AVENUE**



- NOTES:**
1. ALL WORK AND MATERIALS TO BE IN ACCORDANCE WITH THE LATEST REVISION OF THE CITY OF WINNIPEG STANDARD CONSTRUCTION SPECIFICATIONS.
  2. CONTRACTOR TO CONFIRM THE LOCATION OF ALL UTILITIES/SERVICES IN THE FIELD PRIOR TO CONSTRUCTION.
  3. ALL ROADWAY DIMENSIONS SHOWN ARE TO BACK OF CURB.
  4. EXISTING ASPHALT TO BE PLANED AS SHOWN OR AS DIRECTED BY CONTRACT ADMINISTRATOR.
  5. 200mm PARTIAL CONCRETE SLAB PATCHES SHOWN ARE ONLY A REPRESENTATIVE APPROXIMATION OF THE TENDERED QUANTITIES.
  6. CONSTRUCT MONOLITHIC CURB AND SIDEWALK WITH BLOCKOUTS AS PER SD-228B, DETAIL 'A' AND AS DIRECTED BY CONTRACT ADMINISTRATOR.
  7. ALL PRIVATE WALKWAYS TO BE ADJUSTED TO NEW SIDEWALK OR TOP OF CURB ELEVATION, AS DIRECTED BY THE CONTRACT ADMINISTRATOR.
  8. PAVEMENT REPAIR FABRIC TO BE INSTALLED AS SHOWN OR AS DIRECTED BY CONTRACT ADMINISTRATOR.
  9. MODIFIED BARRIER CURB TO BE CONSTRUCTED AT ALL INTERSECTION RADII AND ALLEY RADII.
  10. CONTRACTORS TO TAKE PRECAUTIONARY STEPS TO PROTECT EXISTING TREES WITHIN THE LIMITS OF CONSTRUCTION FROM DAMAGE FROM CONSTRUCTION ACTIVITIES AS OUTLINED IN THE SPECIFICATIONS.
  11. LAMP STANDARDS, HYDRO POLES, AND ANCHORS THAT REQUIRE TEMPORARY SUPPORT, REMOVAL OR REPLACEMENT, TO BE DONE SO AT THE EXPENSE OF THE CONTRACTOR AS NECESSARY.
  12. ALL BOULEVARDS TO BE SODDED UNLESS OTHERWISE NOTED.
  13. ADJUST ALL WATER VALVES, HYDRANTS, MANHOLES, AND CATCH BASINS IN WORK AREA TO GRADE.

FOR CONTINUATION SEE  
 DWG P-3583-02

**METRIC**  
 WHOLE NUMBERS INDICATE MILLIMETRES  
 DECIMALIZED NUMBERS INDICATE METRES

**ENGINEERS  
 GEOSCIENTISTS  
 MANITOBA**  
 Certificate of Authorization  
 WSP Canada Inc.  
 No. 5750

**FOR TENDER PURPOSES ONLY**  
**NOT FOR CONSTRUCTION**

EXISTING	LEGEND-PLAN	PROPOSED	EXISTING	LEGEND-PLAN	PROPOSED	EXISTING	LEGEND-PLAN	PROPOSED
	WATER MAIN			VALVE			EDGE OF SIDEWALK	
	LAND DRAINAGE SEWER			CURB STOP			EDGE OF ASPHALT	
	WASTE WATER SEWER			HYDRO POLE & LIGHT STANDARD			EDGE OF CONCRETE	
	HYDRO SEWER			LIGHT STANDARD OR TRAFFIC SIGNAL			MODIFIED BARRIER CURB	
	GAS			HYDRO POLE / ANCHOR			BARRIER CURB	
	COMMUNICATIONS			FENCE			BARRIER CURB AND GUTTER	
	SIGNALS			PROPERTY LINE			PAVING STONE	
	MANHOLE			TEST HOLE / PAVEMENT CORE			CONCRETE SIDEWALK	
	CATCH BASIN/CATCH PIT			ELEVATIONS			CONCRETE SLAB	
	CURB INLET			CURB RAMP			ASPHALT	
	UTILITIES ADJUSTED			DETECTABLE WARNING SURFACE TILE			MILLED SURFACE	
	HYDRANT			LEGEND-PLAN			PAVEMENT REPAIR FABRIC	

**LOCATIONS APPROVED UNDERGROUND STRUCTURES**

SIGNED BY: \_\_\_\_\_ DATE: \_\_\_\_\_

SUPV UG STRUCTURES

LOCATION OF UNDERGROUND STRUCTURES AS SHOWN ARE BASED ON THE BEST INFORMATION AVAILABLE BUT NO GUARANTEE IS GIVEN THAT ALL EXISTING UTILITIES ARE SHOWN OR THAT THE GIVEN LOCATIONS ARE EXACT CONFIRMATION OF EXISTANCE AND EXACT LOCATION OF ALL SERVICES MUST BE OBTAINED FROM THE INDIVIDUAL UTILITIES BEFORE PROCEEDING

NO.	REVISIONS	DATE	BY
7			
6			
5			
4			
3			
2			
1			
0	ISSUED FOR TENDER	20250109	R.H.

WSP Canada Inc.  
 1600 Buffalo Place  
 Winnipeg, MB R3T 6B8  
 t. 204.477.6650  
 f. 204.474.2864  
 www.wsp.com

DESIGNED BY	CHECKED BY
N.T.	R.H.
DRAWN BY	APPROVED BY
N.T. / R.H.	V.M.

HOR. SCALE: 1:250  
 VERTICAL: 1:10  
 DATE: MARCH 2024

ENGINEER'S SEAL  
  
 CONSULTANT ACAD. DWG. NO.  
 CA0022819.5515-11

**THE CITY OF WINNIPEG**  
 PUBLIC WORKS DEPARTMENT  
 ENGINEERING SERVICES DIVISION

**2025 PAVEMENT RENEWALS - SARGENT AVENUE**  
 SARGENT AVENUE  
 MAJOR REHABILITATION  
 STA. 1+12.85 TO STA. 1+90

CITY DRAWING NUMBER	TENDER NO.
P-3583-01	504-2024
SHEET 01 OF 08	