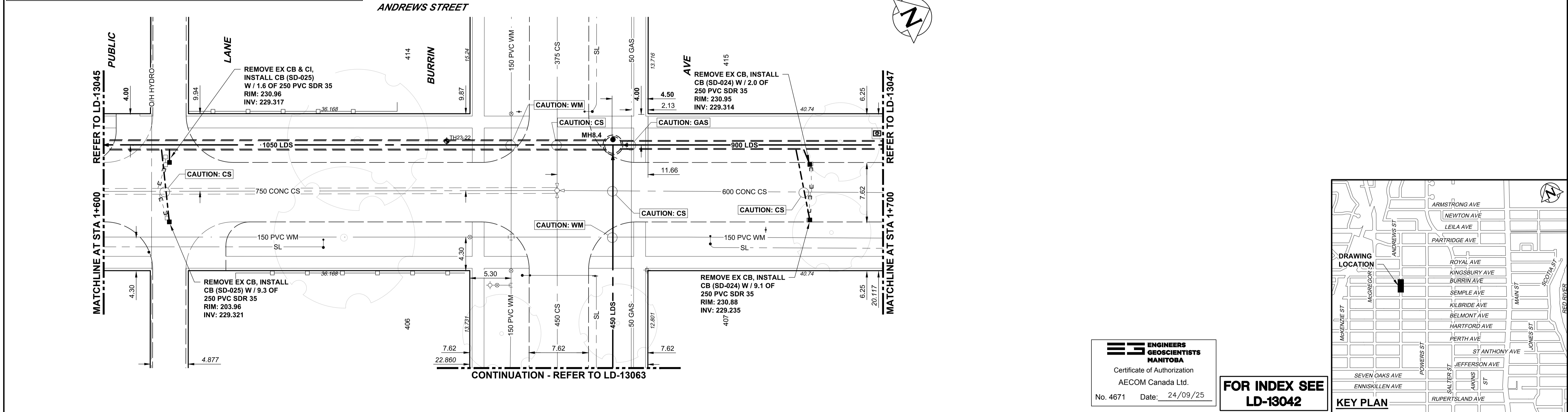


NOTE: CHAINAGES SHOWN ARE ALONG W. P. OF ANDREWS STREET
 STA. 1+000.000 = S P. JEFFERSON AVENUE



WARNING

IF POWER EQUIPMENT OR EXPLOSIVES ARE TO BE USED FOR EXCAVATION ON THIS PROJECT THE CONTRACTOR MUST:

- 1) NOTIFY THE GAS COMPANY OF THE PROPOSED LOCATION OF EXCAVATION.
- 2) TAKE PRECAUTION TO AVOID DAMAGE TO GAS COMPANY INSTALLATIONS.

SEE PROVINCIAL REGULATION 210/72 FOR DETAILS

METRIC
 WHOLE NUMBERS INDICATE MILLIMETRES
 DECIMALIZED NUMBERS INDICATE METRES

LOCATION APPROVED
 UNDERGROUND STRUCTURES

SUPV. U/G STRUCTURES COMMITTEE DATE

NOTE:
 LOCATION OF UNDERGROUND STRUCTURES AS SHOWN ARE BASED ON THE BEST INFORMATION AVAILABLE BUT NO GUARANTEE IS GIVEN THAT ALL EXISTING UTILITIES ARE SHOWN OR THAT THE GIVEN LOCATIONS ARE EXACT. CONFIRMATION OF EXISTENCE AND EXACT LOCATION OF ALL SERVICES MUST BE OBTAINED FROM THE INDIVIDUAL UTILITIES BEFORE PROCEEDING WITH CONSTRUCTION.

CONSTRUCTION COMPLETION DATE: YYYY MM DD	
0	ISSUED FOR TENDER 24/09/25 ADL
NO.	REVISIONS DATE BY

AECOM

DESIGNED BY: MJK
 CHECKED BY: MPG
 DRAWN BY: ADL
 APPROVED BY: KWF
 SCALE: HORIZONTAL 1:250, VERTICAL 1:50
 RELEASED FOR CONSTRUCTION
 DATE: 2024 10 01

ENGINEER'S SEAL

CONSULTANT DRAWING NUMBER: C-1004

ENGINEERS GEOSCIENTISTS MANITOBA
 Certificate of Authorization
 AECOM Canada Ltd.
 No. 4671 Date: 24/09/25

FOR INDEX SEE LD-13042

THE CITY OF WINNIPEG
 WATER AND WASTE DEPARTMENT
 ENGINEERING DIVISION

JEFFERSON EAST COMBINED SEWER RELIEF
 CONTRACT 8
 ANDREWS STREET
 32m NORTH OF SEMPLE AVENUE
 TO 10m SOUTH OF KINGSBURY AVENUE

SHEET 6 OF 24
 CITY DRAWING NUMBER
 LD-13046

