

APPENDIX 'A'

GEOTECHNICAL REPORT



Test Hole #: TH44

Client: WSP Canada Inc.

Site: Shoulder Dugald Road, Winnipeg, MB

Location: See Figure

Project: Dugald Road and Plessis Road Pavement Renewals

File No.: 24-035-01

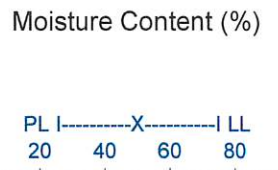
Date Drilled: April 1, 2024

Grade Elevation: 100.0 m

Water Elevation: --

**Engineering And Testing
Solutions That Work For You**

SUBSURFACE PROFILE			SAMPLE DATA				SHEAR STRENGTH (kPa)		
Depth (m)	Soil Symbol	Description	Sample No.	Sample Type	Moisture Content (%)	Blows/300 mm	Moisture Content (%)		
							P. Pen	Torvane	UC
0.0		Gravel Fill							
0.0 - 1.0		Clay - black, moist, high plastic, some sand, trace gravel.	S1		18.3				
1.0			S2		17.9				
1.5			S3		33.5				
2.0			S4		39.0				
2.0 - 3.0		- below 2.0 m, light brown.	S5		28.2				
3.0			S6		26.4				
3.0 - 4.0		End of Test Hole - test hole ended 3.0 m below grade. - seepage encountered at 2.1 m below grade. - no sloughing encountered. - test hole backfilled with auger cuttings upon completion of drilling.							



ENG-TECH Consulting Limited

Logged by: SZ

Reviewed by:

Drilled By: ENG-TECH Consulting Limited.

Drill Rig: Lone Star T1A+

Auger Size: 100 mm Solid Stem

Completion Depth: 3.0 m

Completion Elevation: 97.0 m

Sheet: 1 of 1

SAMPLE TYPE



SPLIT BARREL



SHELBY TUBE



AUGER CUTTINGS



SPLIT SPOON



Test Hole #: TH45

Client: WSP Canada Inc.

Site: Shoulder Dugald Road, Winnipeg, MB

Location: See Figure 1

Project: CW749-2023 Pavement Renewals on Dugald Road and Plessis Road

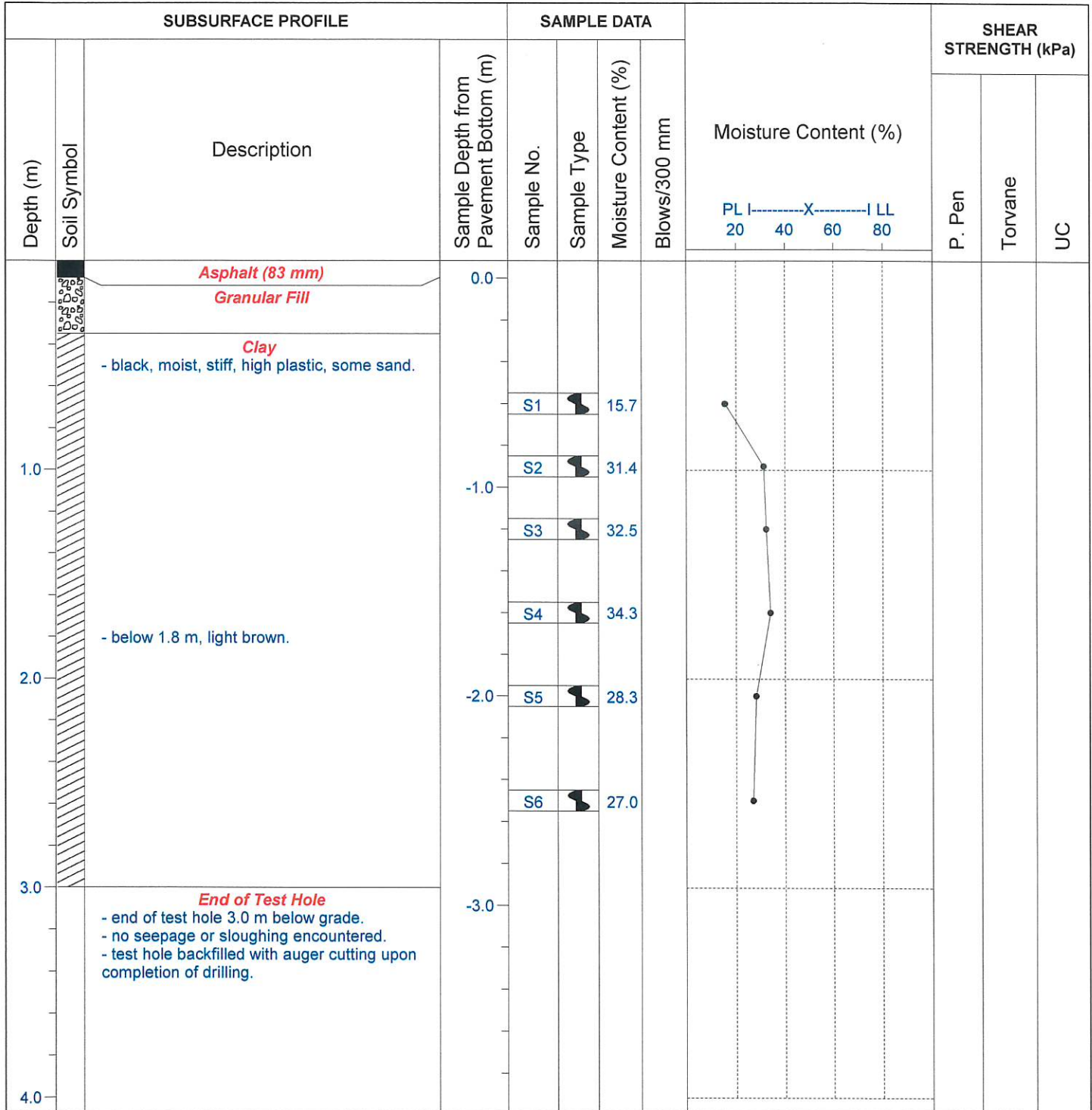
File No.: 24-035-01

Date Drilled: April 10, 2024

Grade Elevation: 100.0 m

Water Elevation: --

**Engineering And Testing
Solutions That Work For You**



ENG-TECH Consulting Limited

Logged by: SZ

Reviewed by:

Drilled By: ENG-TECH Consulting Limited

Drill Rig: Lone star

Auger Size: 125 mm Solid Stem

Completion Depth: 3.0 m

Completion Elevation: 97.0 m

Sheet: 1 of 1

SAMPLE TYPE



SPLIT BARREL



SHELBY TUBE



AUGER CUTTINGS



SPLIT SPOON



Test Hole #: TH46

File No.: 24-035-01

Client: WSP Canada Inc.

Date Drilled: April 10, 2024

Site: Shoulder Dugald Road, Winnipeg, MB

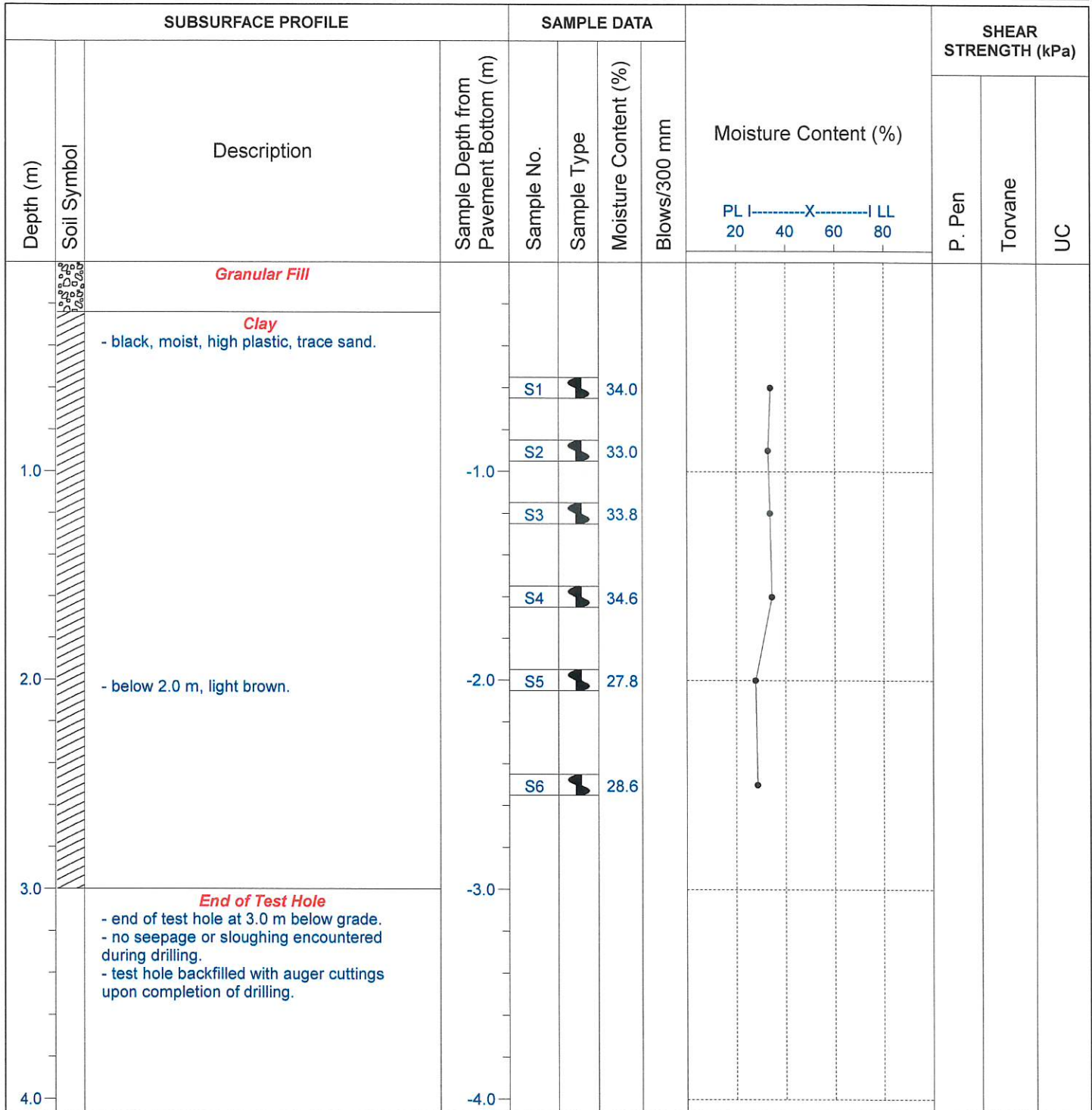
Grade Elevation: 100.0 m

Location: See Figure

Water Elevation: --

**Engineering And Testing
Solutions That Work For You**

Project: CW749-2023 Pavement Renewals on Dugald Road and Plessis Road



ENG-TECH Consulting Limited

Logged by: SZ

Reviewed by:

Drilled By: ENG-TECH Consulting Limited

Drill Rig: Lone star

Auger Size: 125 mm Solid Stem

Completion Depth: 3.0 m

Completion Elevation: 97.0 m

Sheet: 1 of 1

SAMPLE TYPE



SPLIT BARREL



SHELBY TUBE



AUGER CUTTINGS



SPLIT SPOON



Test Hole #: TH47

Client: WSP Canada Inc.

Site: Shoulder Dugald Road, Winnipeg, MB

Location: See Figure

Project: CW749-2023 Pavement Renewals on Dugald Road and Plessis Road

File No.: 24-035-01

Date Drilled: April 10, 2024

Grade Elevation: 100.0 m

Water Elevation: --

**Engineering And Testing
Solutions That Work For You**

SUBSURFACE PROFILE			SAMPLE DATA				SHEAR STRENGTH (kPa)					
Depth (m)	Soil Symbol	Description	Sample Depth from Pavement Bottom (m)	Sample No.	Sample Type	Moisture Content (%)	Blows/300 mm	Moisture Content (%)				
								PL	X	LL	P. Pen	Torvane
		Asphalt (124 mm) Granular Fill	0.0									
		Clay - black, moist, highly plastic, some sand, trace gravel.										
1.0		- below 1.0 m, some silt.		S1		27.5						
			-1.0	S2		26.8						
				S3		29.9						
				S4		30.7						
2.0		- below 1.9 m, dark brown.	-2.0	S5		30.3						
		- below 2.4 m, highly plastic.		S6		29.3						
3.0		End of Test Hole - end of test hole at 3.0 m below grade. - no seepage or sloughing encountered. - test hole backfilled with auger cuttings upon completion of drilling.	-3.0									
4.0												

ENG-TECH Consulting Limited

Logged by: SZ

Reviewed by:

Drilled By: **ENG-TECH Consulting Limited**

Drill Rig: Lone star

Auger Size: 125 mm Solid Stem

Completion Depth: 3.0 m

Completion Elevation: 97.0 m

Sheet: 1 of 1

SAMPLE TYPE



SPLIT BARREL



SHELBY TUBE



AUGER CUTTINGS



SPLIT SPOON