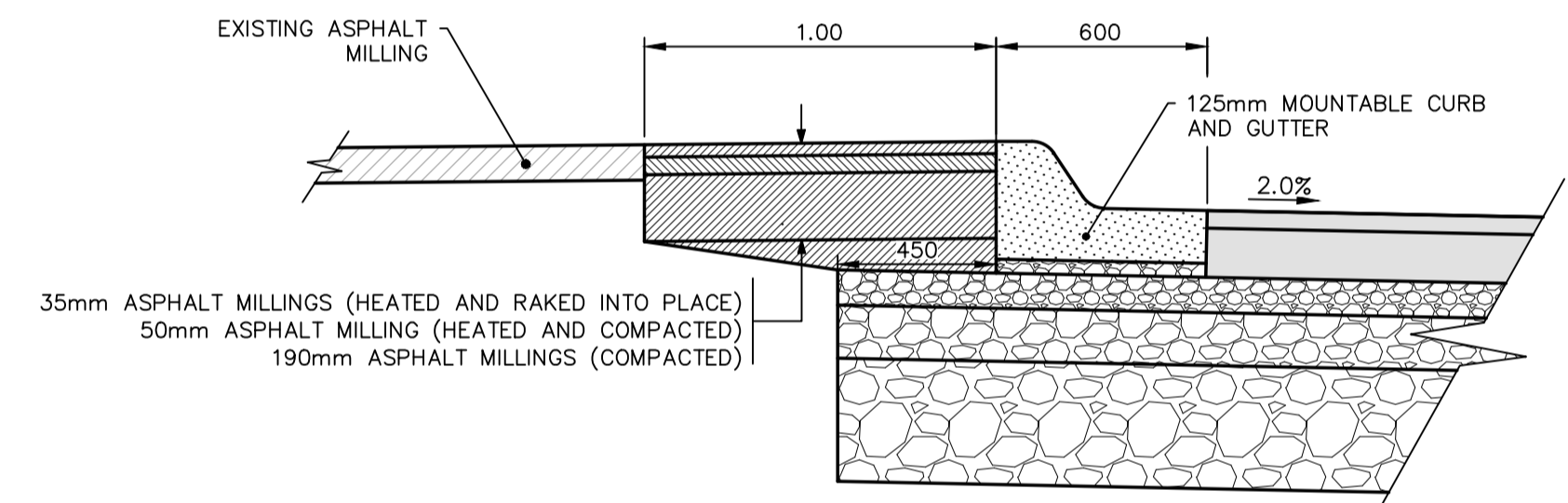
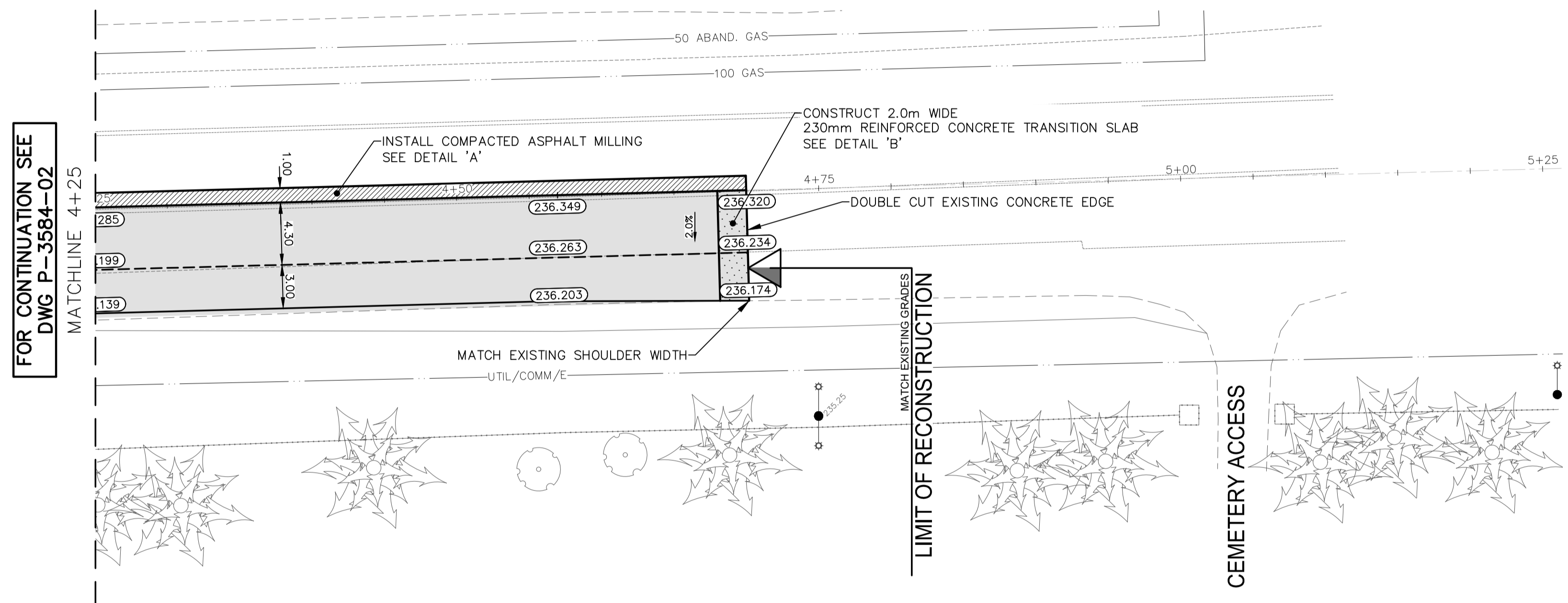
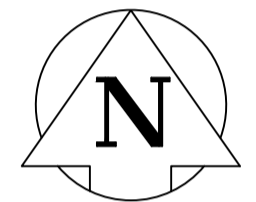
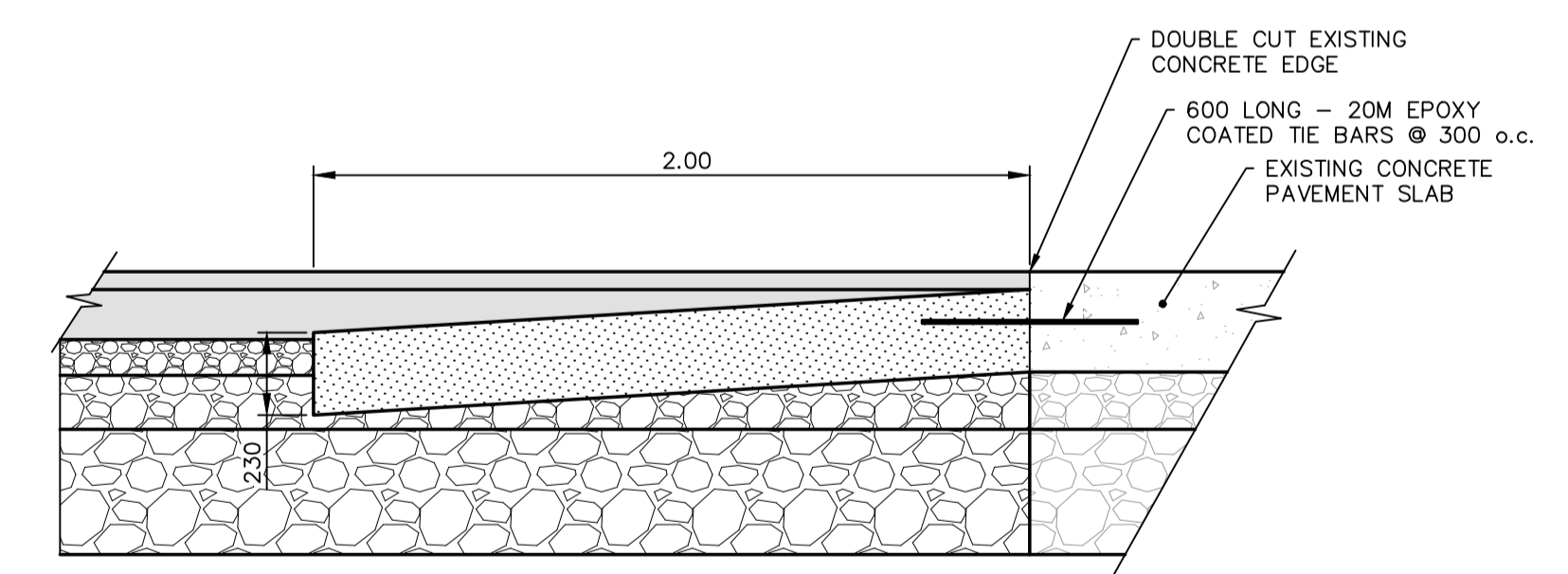


DUGALD ROAD



DETAIL 'A'
COMPACTED ASPHALT MILLING STRIP
N.T.S.



DETAIL 'B'
REINFORCED CONCRETE TRANSITION SLAB
N.T.S.

- NOTES:
1. ALL WORK AND MATERIALS TO BE IN ACCORDANCE WITH THE LATEST REVISION OF THE CITY OF WINNIPEG STANDARD CONSTRUCTION SPECIFICATIONS.
 2. CONTRACTOR TO CONFIRM THE LOCATION OF ALL UTILITIES/SERVICES IN THE FIELD PRIOR TO CONSTRUCTION.
 3. ALL ROADWAY DIMENSIONS SHOWN ARE TO BACK OF CURB.
 4. MODIFIED BARRIER CURB TO BE CONSTRUCTED AT ALL INTERSECTION RADII AND ALLEY RADII.
 5. CONTRACTORS TO TAKE PRECAUTIONARY STEPS TO PROTECT EXISTING TREES WITHIN THE LIMITS OF CONSTRUCTION FROM DAMAGE FROM CONSTRUCTION ACTIVITIES AS OUTLINED IN THE SPECIFICATIONS.
 6. LAMP STANDARDS, HYDRO POLES, AND ANCHORS THAT REQUIRE TEMPORARY SUPPORT, REMOVAL OR REPLACEMENT, TO BE DONE SO AT THE EXPENSE OF THE CONTRACTOR AS NECESSARY.
 7. ADJUST ALL WATER VALVES, HYDRANTS, MANHOLES, AND CATCH BASINS IN WORK AREA TO GRADE.

EXISTING	LEGEND-PLAN	PROPOSED	EXISTING	LEGEND-PLAN	PROPOSED	EXISTING	LEGEND-PROFILE	PROPOSED
---	WATER MAIN	---	---	ANCHOR	---	---		
---	LAND DRAINAGE SEWER	---	---	HYDRO POLE & LIGHT STANDARD	---	---		
---	WASTE WATER SEWER	---	---	LIGHT STANDARD OR TRAFFIC SIGNAL	---	---		
---	HYDRO	---	---	HYDRO POLE	---	---		
---	BELL/MTS	---	---	CURB RAMP	---	---		
---	GAS	---	---	DETECTABLE WARNING SURFACE TILE	---	---		
---	SIGNALS	---	---	EDGE OF SIDEWALK	---	---		
○	MANHOLE	●	---	FENCE	---	---		
□	CATCH BASIN	■	---	PROPERTY LINE	---	---		
△	CURB INLET	▽	---	EDGE OF ASPHALT	---	---		
△	UTILITIES ADJUSTED	△ □ ○	---	EDGE OF CONCRETE	---	---		
⌋	PLUG	⌋	---	MODIFIED BARRIER CURB	---	---		
◇	HYDRANT	◆	---	BARRIER CURB	---	---		
⊗	VALVE	⊗	---	BARRIER CURB AND GUTTER	---	---		
⊕	CURB STOP	⊕	---	CONC SIDEWALK	---	---		
⊕	IRON BAR	⊕	---	CONCRETE SLAB	---	---		
#111	CIVIC ADDRESS		---	ASPHALT	---	---		
(231.00)	PAVEMENT GRADE	(231.000)	---	MILLED SURFACE	---	---		
230.99	GROUND GRADE		---	PAVEMENT REPAIR FABRIC	---	---		
---	EXISTING	---	---	---	---	---		

LOCATIONS APPROVED UNDERGROUND STRUCTURES

SIGNED BY: _____ DATE: _____

SUPV UG STRUCTURES

LOCATION OF UNDERGROUND STRUCTURES AS SHOWN ARE BASED ON THE BEST INFORMATION AVAILABLE BUT NO GUARANTEE IS GIVEN THAT ALL EXISTING UTILITIES ARE SHOWN OR THAT THE GIVEN LOCATIONS ARE EXACT CONFIRMATION OF EXISTANCE AND EXACT LOCATION OF ALL SERVICES MUST BE OBTAINED FROM THE INDIVIDUAL UTILITIES BEFORE PROCEEDING

G.A.M. ELEV.	DATE	BY
H		
G		
F		
E		
D		
C		
B		
O		
NO.	ISSUED FOR TENDER	24/07/12
	REVISIONS	

wsp

DESIGNED BY: SRS
DRAWN BY: WJd

CHECKED BY: MV
APPROVED BY: SRS

WSP Canada Inc.
1600 Buffalo Place
Winnipeg, MB R3T 6B8
t. 204.477.6650
f. 204.474.2864
www.wsp.com

ENGINEER'S SEAL

2024-07-16

CONSULTANT ACAD DWG. NO.
CA0022818.5512-03

THE CITY OF WINNIPEG
PUBLIC WORKS DEPARTMENT
ENGINEERING SERVICES DIVISION

2024 REGIONAL STREET RENEWALS
DUGALD ROAD
ASPHALT RECONSTRUCTION
STA. 4+25 TO STA. 4+70

CITY DRAWING NUMBER: P-3584-03
SHEET 3 OF 3
TENDER NO. 588-2024

METRIC
WHOLE NUMBERS INDICATE MILLIMETRES
DECIMALIZED NUMBERS INDICATE METRES

ENGINEERS GEOSCIENTISTS MANITOBA
Certificate of Authorization
WSP Canada Inc.
No. 5750

FOR TENDER PURPOSES ONLY
NOT FOR CONSTRUCTION

Jul 09, 2024 - 2:15pm
 P:\Project\2024\CA0022818.5512 - Pavement Renewals Dugald & Plessis\02 Drawings\03_Work_Dwg\CA0022818.5512_Dugald Rd(Renewal-Cemetery)_Plan&Profile.dwg - tab:588-2024_Drawing_XM-XXXXX-00-XX-R3