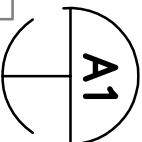
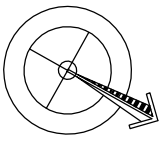
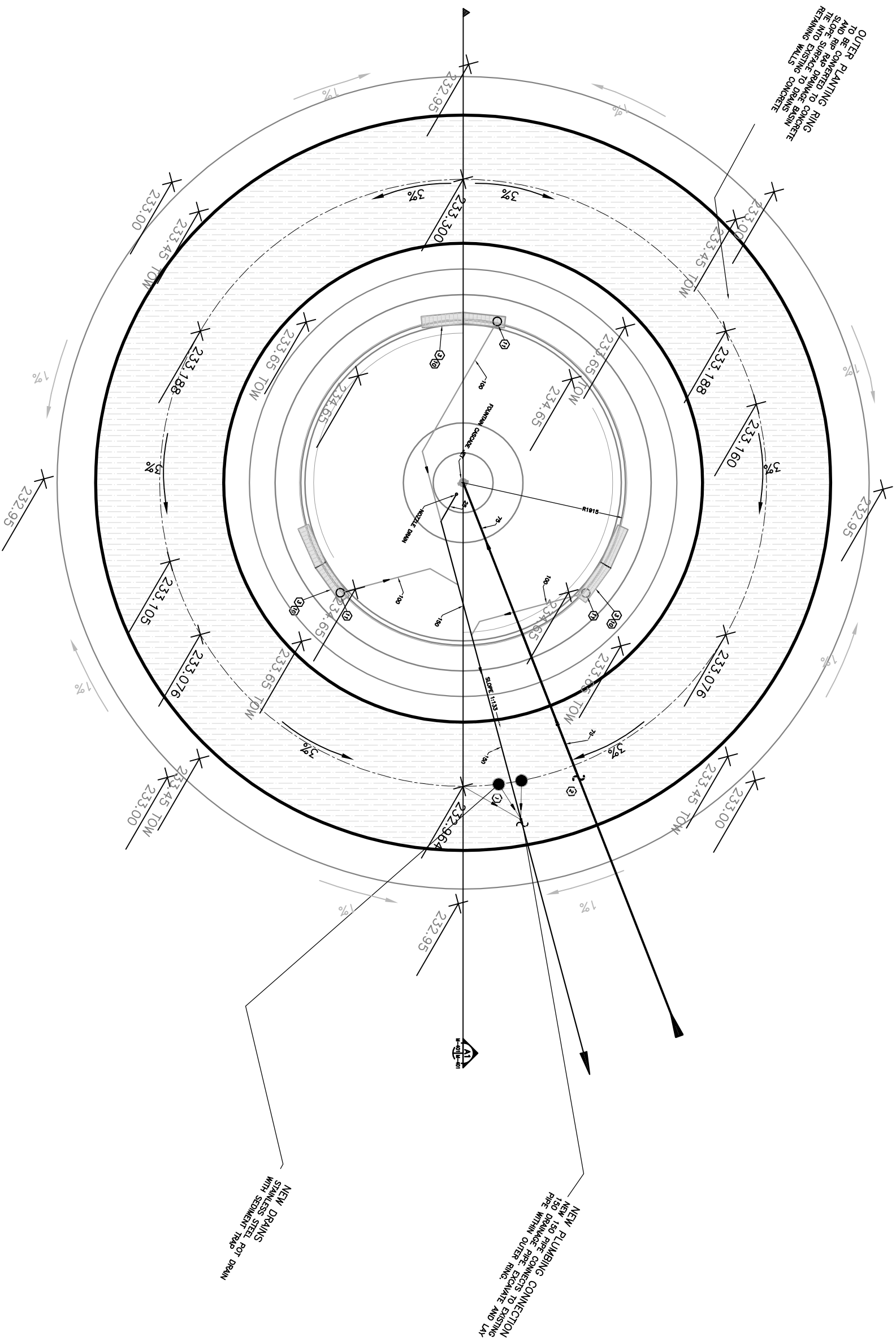


OUTER PLUMBING RING  
TO BE CONVERTED TO CONCRETE  
AND RIP CONCRETE TO DRAINAGE BASIN  
SLOPE SURFACE TO DRAINAGE BASIN  
AND EXISTING TO CONCRETE  
REMAINING WALLS



# FOUNTAIN PLUMBING PLAN

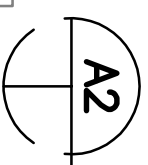
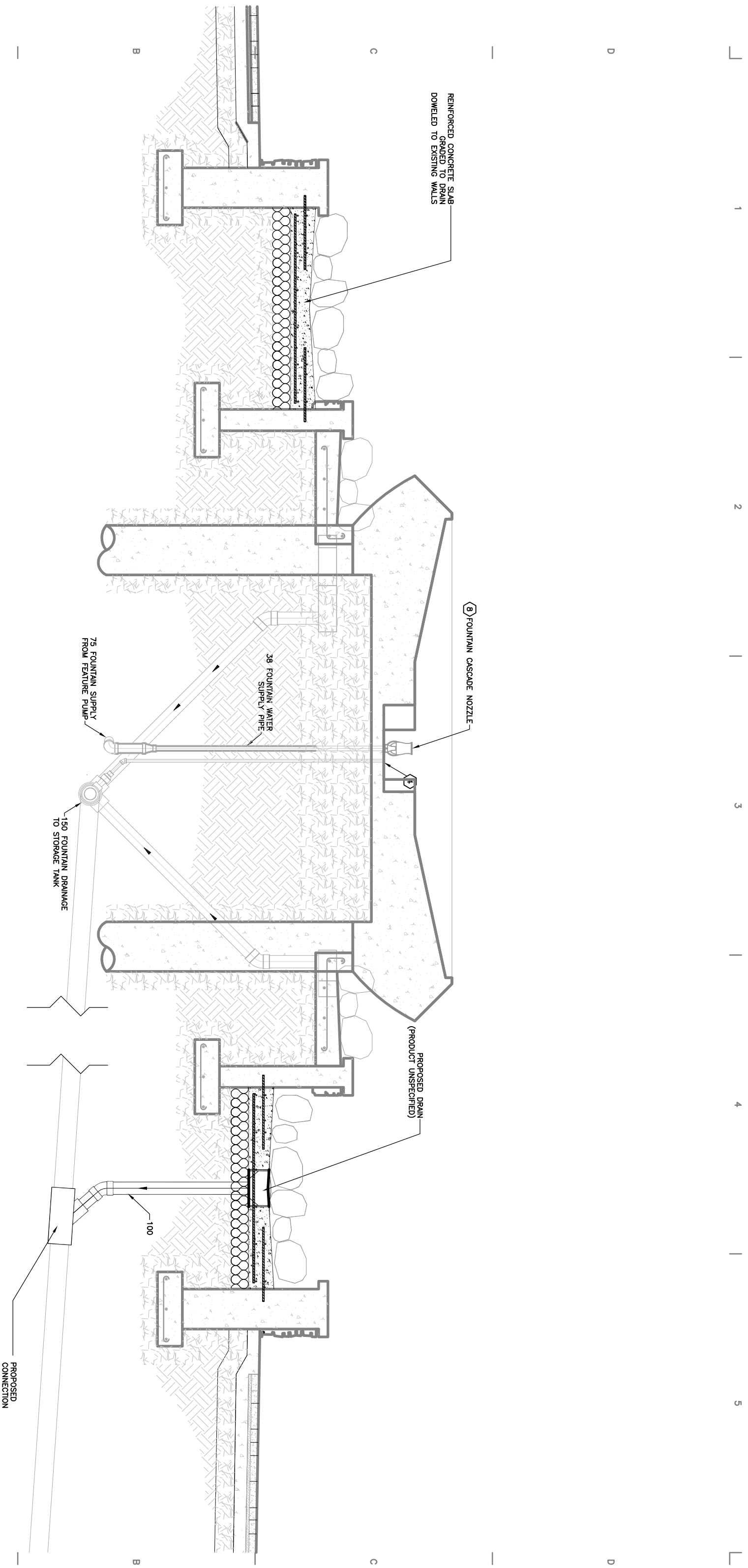
1:50

**Smith Carter**

Smith Carter Architects  
and Engineers Incorporated  
1600 Buffalo Place  
Winnipeg, Manitoba  
Canada, R3T 6B8

Architects  
Engineers  
Planners  
Interior Designers  
Landscape Architects

Project Title		BRIDGWATER FOREST FOUNTAIN RETROFIT WINNIPEG, MB	
Drawn	DB	App'v'd	EN
Date	APRIL 28, 2009	Detail Sheet No. <b>A1</b>	
Scale	1:50	Project No. 26005.25	



# FOUNTAIN SECTION

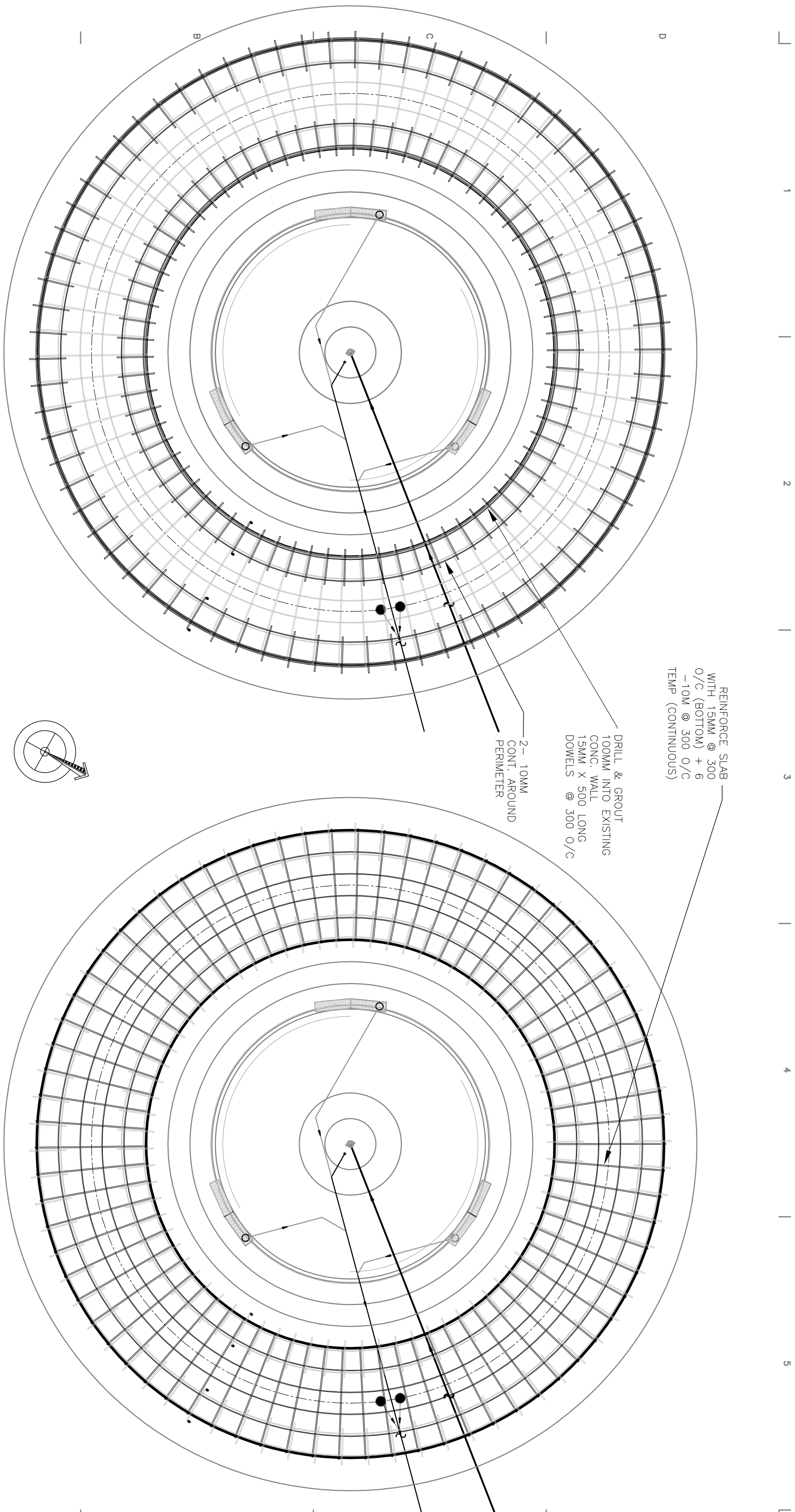
1:30

Smith Carter Architects  
and Engineers Incorporated  
1600 Buffalo Place  
Winnipeg, Manitoba  
Canada, R3T 6B8

Tel: (204) 477-1260  
Fax: (204) 477-6346

Architects  
Engineers  
Planners  
Interior Designers  
Landscape Architects

Project Title				BRIDGWATER FOREST FOUNTAIN RETROFIT WINNIPEG, MB	
Drawn	DB	Appv'd	EN	Detail Sheet No.	
Date	APRIL 28, 2009		A2		
Scale	1:30		Project No. 26005.25		



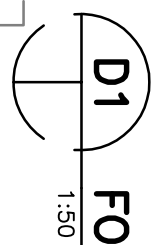
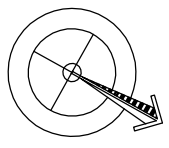
REBAR DOWELS

SLAB REINFORCEMENT

REINFORCE SLAB  
WITH 15MM @ 300  
O/C (BOTTOM) + 6  
- 10M @ 300 O/C  
TEMP (CONTINUOUS)

DRILL & GROUT  
100MM INTO EXISTING  
CONC. WALL  
15MM X 500 LONG  
DOWELS @ 300 O/C

2 - 10MM  
CONT. AROUND  
PERIMETER



**D1 FOUNTAIN REBAR PLANS**

1:50

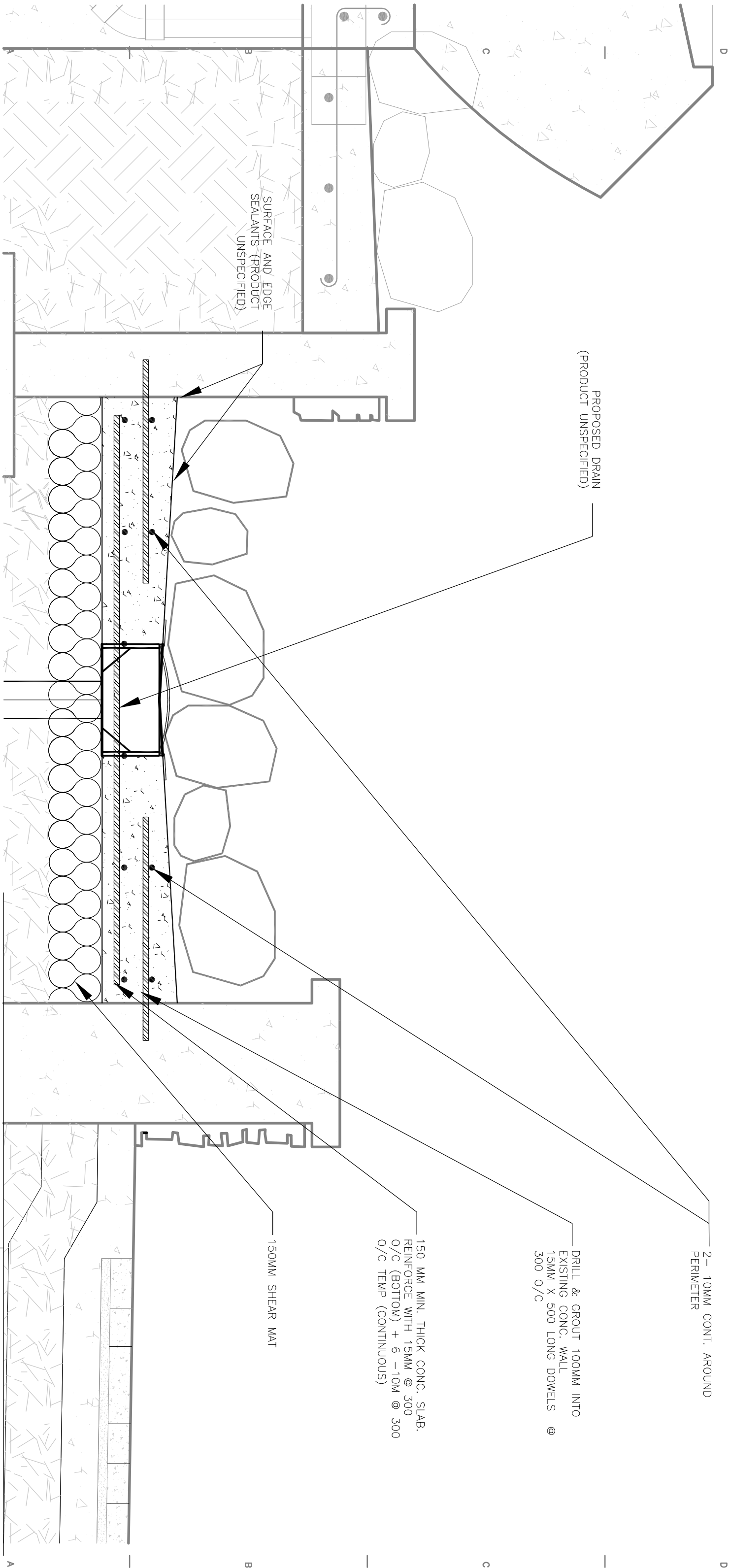
Smith Carter Architects  
and Engineers Incorporated  
1600 Buffalo Place  
Winnipeg, Manitoba  
Canada, R3T 6B8

Architects  
Engineers  
Planners  
Interior Designers  
Landscape Architects

Project Title <b>BRIDGWATER FOREST FOUNTAIN RETROFIT</b> WINNIPEG, MB				
Drawn	DB	App'v'd	EN	Detail Sheet No.
Date	APRIL 28, 2009			<b>D1</b>
Scale	1:50	Project No. 26005.25		

**Smith Carter**

Tel: (204) 477-1200  
Fax: (204) 477-6346



PROPOSED DRAIN  
(PRODUCT UNSPECIFIED)

2- 10MM CONT. AROUND  
PERIMETER

DRILL & GROUT 100MM INTO  
EXISTING CONC. WALL  
15MM X 500 LONG DOWELS @  
300 O/C

150 MM MIN. THICK CONC. SLAB.  
REINFORCE WITH 15MM @ 300  
O/C (BOTTOM) + 6 -10M @ 300  
O/C TEMP (CONTINUOUS)

150MM SHEAR MAT

SURFACE AND EDGE  
SEALANTS (PRODUCT  
UNSPECIFIED)

**D2** FOUNTAIN SECTION DETAIL

1:10

**Smith Carter**

Smith Carter Architects  
and Engineers Incorporated  
1600 Buffalo Place  
Winnipeg, Manitoba  
Canada, R3T 6B8

Tel: (204) 477-1260  
Fax: (204) 477-6346

Architects  
Engineers  
Planners  
Interior Designers  
Landscape Architects

Project Title **BRIDGWATER FOREST FOUNTAIN  
RETROFIT**  
WINNIPEG, MB

Drawn	DB	Appv'd	EN	Detail Sheet No.	<b>D2</b>
Date	APRIL 28, 2009				
Scale	1:10			Project No.	26005.25