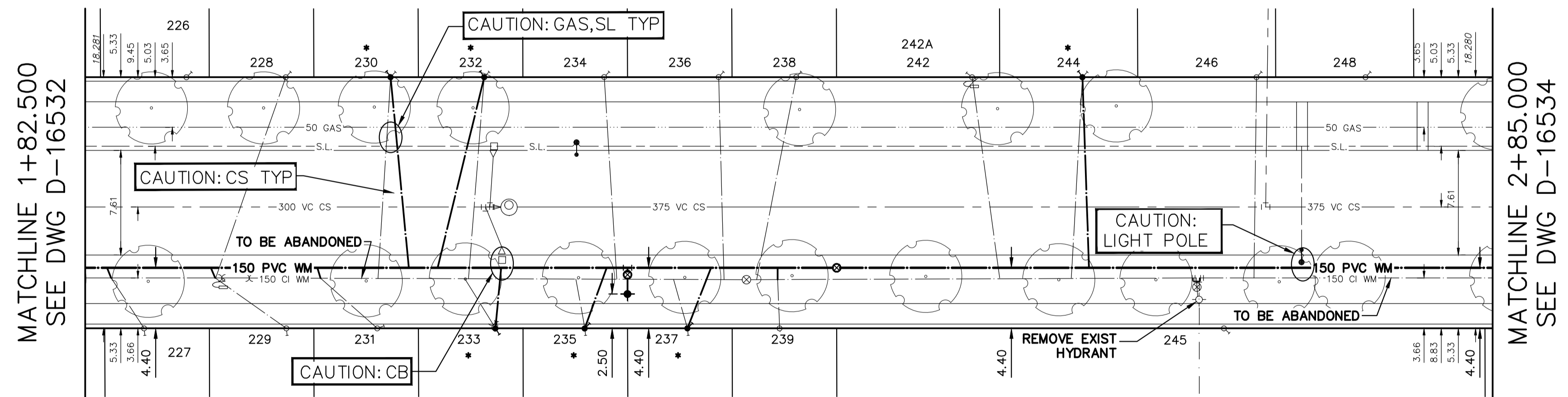
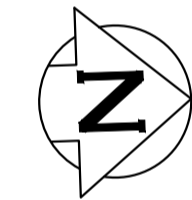


NOTE: CHAINAGES SHOWN ARE ALONG E. R. OF MARJORIE STREET

MARJORIE STREET



MATCHLINE 1+82.500
SEE DWG D-16532

MATCHLINE 2+85.000
SEE DWG D-16534

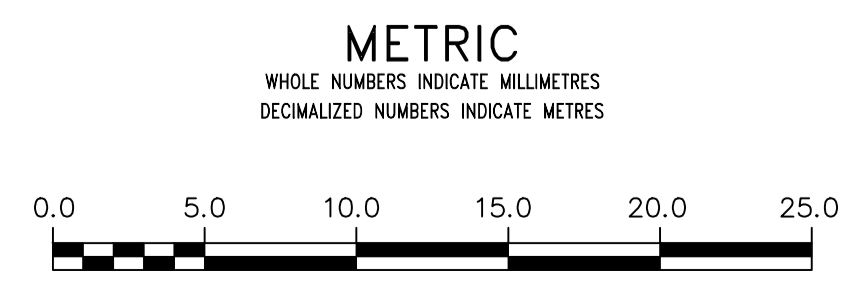
FOR INDEX SEE D-16527

NOTE: ALL VALVES TO BE INSTALLED COUNTERCLOCKWISE TO CLOSE

WATER SERVICE INFORMATION

ADDRESS	SIZE (mm) MATERIAL (STREET)	SIZE (mm) MATERIAL (PROP.)	SHORT & LONG MEASUREMENT	CORP LOCATION	REMARKS
226 MARJORIE ST RESIDENTIAL	-	12 CU	4.87 NSL BLDG 141.580>NNL PORTAGE AVE	-	RECONNECT SERVICE
227 MARJORIE ST RESIDENTIAL	-	-	1.79 NSL BLDG 136.790>NNL PORTAGE AVE	2.4 S OF S/C	RECONNECT SERVICE
228 MARJORIE ST RESIDENTIAL	-	-	5.10 NSL BLDG 148.810>NNL PORTAGE AVE	5.1 S OF S/C	RECONNECT SERVICE
229 MARJORIE ST RESIDENTIAL	-	-	4.92 NSL BLDG 147.150>NNL PORTAGE AVE	4.9 S OF S/C	RECONNECT SERVICE
* 230 MARJORIE ST RESIDENTIAL	20 CU	20 CU	5.05 NSL BLDG 156.440>NNL PORTAGE AVE	0.9 S OF S/C	RENEW TO R W/20 CU
231 MARJORIE ST RESIDENTIAL	20 CU	20 CU	3.61 NSL BLDG 153.770>NNL PORTAGE AVE	4.3 S OF S/C	RECONNECT SERVICE
* 232 MARJORIE ST RESIDENTIAL	20 CU	20 CU	4.24 NSL BLDG 163.280>NNL PORTAGE AVE	1.1 S OF S/C	RENEW TO R W/20 CU
* 233 MARJORIE ST RESIDENTIAL	12 CU	20 CU	4.38 NSL BLDG 162.390>NNL PORTAGE AVE	2.2 S OF S/C	RENEW TO R W/20 CU
234 MARJORIE ST RESIDENTIAL	20 CU	20 CU	4.47 NSL BLDG 172.000>NNL PORTAGE AVE	0.9 N OF S/C	RECONNECT SERVICE
* 235 MARJORIE ST RESIDENTIAL	20 CU	20 CU	3.44 NSL BLDG 168.890>NNL PORTAGE AVE	0.7 S OF S/C	RENEW TO R W/20 CU
236 MARJORIE ST RESIDENTIAL	20 CU	20 CU	5.95 NSL BLDG 180.330>NNL PORTAGE AVE	0.4 N OF S/C	RECONNECT SERVICE
* 237 MARJORIE ST RESIDENTIAL	-	-	3.46 NSL BLDG 176.310>NNL PORTAGE AVE	1.0 S OF S/C	RENEW TO R W/20 CU
238 MARJORIE ST RESIDENTIAL	20 CU	20 CU	2.33 NSL BLDG 185.990>NNL PORTAGE AVE	2.8 S OF S/C	RECONNECT SERVICE
239 MARJORIE ST RESIDENTIAL	-	-	3.00 NSL BLDG 183.080>NNL PORTAGE AVE	0.1 S OF S/C	RECONNECT SERVICE
242 MARJORIE ST RESIDENTIAL	20 CU	-	6.24 NSL BLDG 198.800>NNL PORTAGE AVE	2.1 N OF S/C	RECONNECT SERVICE
242A MARJORIE ST RESIDENTIAL	20 CU	-	6.24 NSL BLDG 198.800>NNL PORTAGE AVE	2.1 N OF S/C	RECONNECT SERVICE
* 244 MARJORIE ST RESIDENTIAL	12 CU	12 CU	4.14 NSL BLDG 206.830>NNL PORTAGE AVE	0.8 S OF S/C	RENEW TO R W/20 CU
245 MARJORIE ST COMMERCIAL	20 CU	25 CU	5.97 NSL BLDG 215.430>NNL PORTAGE AVE	-	RECONNECT SERVICE
245 MARJORIE ST COMMERCIAL	38 CU	38 CU	5.09 NSL BLDG 213.450>NNL PORTAGE AVE	OPP OF S/C	RECONNECT SERVICE
246 MARJORIE ST RESIDENTIAL	-	-	6.16 NSL BLDG 219.500>NNL PORTAGE AVE	0.2 S OF S/C	RECONNECT SERVICE
248 MARJORIE ST RESIDENTIAL	-	-	5.03 NSL BLDG 227.440>NNL PORTAGE AVE	-	RECONNECT SERVICE

* SERVICES TO BE RENEWED TO R. ALL OTHERS TO BE RECONNECTED



WARNING
IF POWER EQUIPMENT OR EXPLOSIVES ARE TO BE USED FOR EXCAVATION ON THIS PROJECT THE CONTRACTOR MUST:
1) NOTIFY THE GAS COMPANY OF THE PROPOSED LOCATION OF EXCAVATION.
2) TAKE PRECAUTION TO AVOID DAMAGE TO GAS COMPANY INSTALLATIONS.
SEE PROVINCIAL REGULATION 210/72 FOR DETAILS

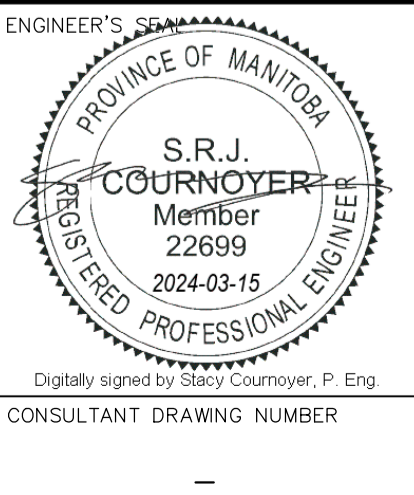
LOCATION APPROVED
UNDERGROUND STRUCTURES
SUPV. U/G STRUCTURES COMMITTEE DATE
NOTE:
LOCATION OF UNDERGROUND STRUCTURES AS SHOWN ARE BASED ON THE BEST INFORMATION AVAILABLE BUT NO GUARANTEE IS GIVEN THAT ALL EXISTING UTILITIES ARE SHOWN OR THAT THE GIVEN LOCATIONS ARE EXACT. CONFIRMATION OF EXISTENCE AND EXACT LOCATION OF ALL SERVICES MUST BE OBTAINED FROM THE INDIVIDUAL UTILITIES BEFORE PROCEEDING WITH CONSTRUCTION.

VERTICAL DATUM: CGVD28 (HT2.0 Geoid)
HORIZONTAL DATUM: NAD83 (June 1990), Zone 14

NO.	REVISIONS	DATE	BY

DESIGNED BY	RG	CHECKED BY	SC
DRAWN BY	AJ	APPROVED BY	SC
SCALE:		RELEASED FOR CONSTRUCTION	
HORIZONTAL	1:250		
VERTICAL	1:50		
DATE	2024 03 08	DATE	

PLOT DATE: 2024 03 08



THE CITY OF WINNIPEG
WATER AND WASTE DEPARTMENT
ENGINEERING DIVISION

2024 WATER MAIN RENEWALS
CONTRACT 2
MARJORIE STREET
315 S OF NESS AVENUE TO
415 S OF NESS AVENUE

SHEET 8 OF 12
CITY DRAWING NUMBER
D-16533