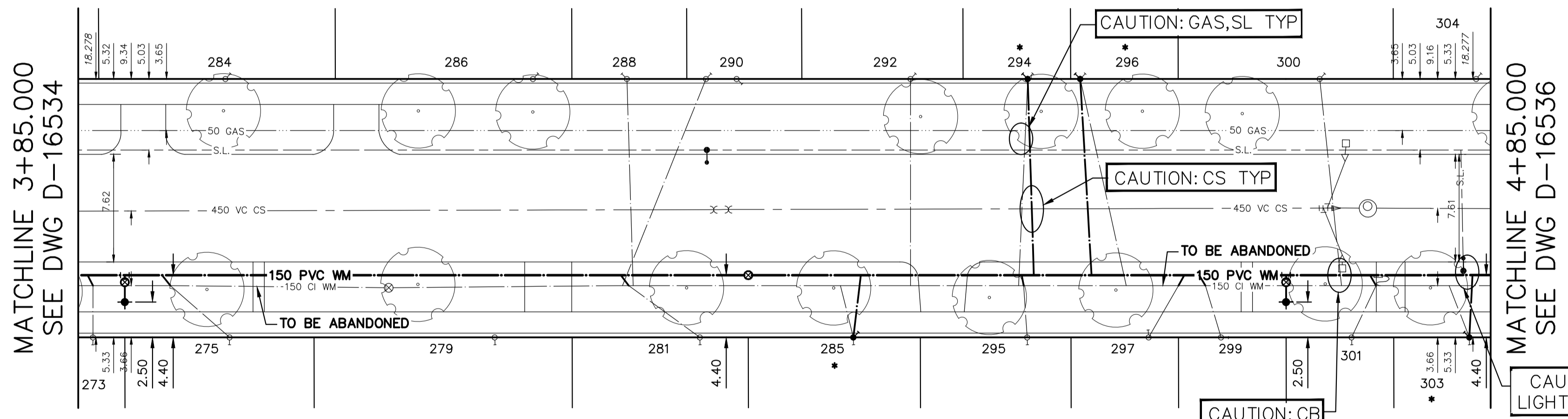


NOTE: CHAINAGES SHOWN ARE ALONG E. R.L. OF MARJORIE STREET

MARJORIE STREET



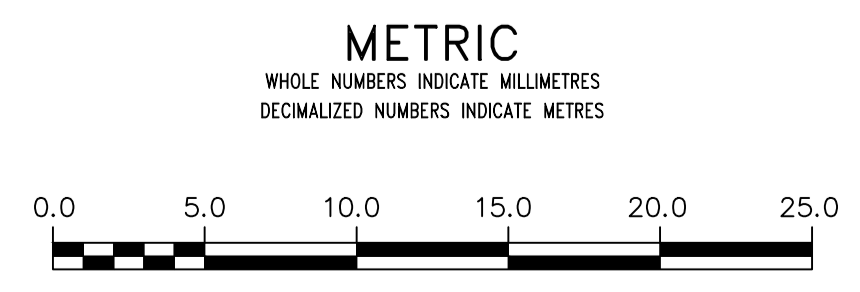
WATER SERVICE INFORMATION

ADDRESS	SIZE (mm) MATERIAL (STREET)	SIZE (mm) MATERIAL (PROP.)	SHORT & LONG MEASUREMENT	CORP LOCATION	REMARKS
273 MARJORIE ST RESIDENTIAL	20 CU	25 CU	1.22 NSL BLDG 213.970 SSL NESS AVE	OPP OF S/C	RECONNECT SERVICE
275 MARJORIE ST RESIDENTIAL	-	-	6.34 NSL BLDG 204.300 SSL NESS AVE	4.2 S OF S/C	RECONNECT SERVICE
279 MARJORIE ST RESIDENTIAL	-	-	7.33 NSL BLDG 185.520 SSL NESS AVE	-	RECONNECT SERVICE
281 MARJORIE ST RESIDENTIAL	-	-	5.54 NSL BLDG 171.000 SSL NESS AVE	4.9 S OF S/C	RECONNECT SERVICE
284 MARJORIE ST RESIDENTIAL	-	-	3.26 NSL BLDG 204.570 SSL NESS AVE	-	RECONNECT SERVICE
* 285 MARJORIE ST RESIDENTIAL	20 CU	-	4.35 NSL BLDG 160.140 SSL NESS AVE	0.9 S OF S/C	RENEW TO R W/20 CU
286 MARJORIE ST RESIDENTIAL	20 CU	-	7.72 NSL BLDG 182.800 SSL NESS AVE	-	RECONNECT SERVICE
288 MARJORIE ST RESIDENTIAL	20 CU	20 CU	2.52 NSL BLDG 176.150 SSL NESS AVE	0.4 N OF S/C	RECONNECT SERVICE
290 MARJORIE ST RESIDENTIAL	20 CU	12 CU	0.70 NSL BLDG 168.380 SSL NESS AVE	5.9 S OF S/C	RECONNECT SERVICE
292 MARJORIE ST RESIDENTIAL	-	-	5.35 NSL BLDG 156.070 SSL NESS AVE	OPP OF S/C	RECONNECT SERVICE
* 294 MARJORIE ST RESIDENTIAL	12 CU	20 CU	3.53 NSL BLDG 147.780 SSL NESS AVE	0.7 S OF S/C	RENEW TO R W/20 CU
295 MARJORIE ST RESIDENTIAL	20 CU	20 CU	6.88 NSL BLDG 147.830 SSL NESS AVE	0.3 S OF S/C	RECONNECT SERVICE
* 296 MARJORIE ST RESIDENTIAL	12 CU	20 CU	2.20 NSL BLDG 144.060 SSL NESS AVE	3.3 N OF S/C	RENEW TO R W/20 CU
297 MARJORIE ST RESIDENTIAL	20 CU	20 CU	4.57 NSL BLDG 139.230 SSL NESS AVE	2.1 N OF S/C	RECONNECT SERVICE
299 MARJORIE ST RESIDENTIAL	20 CU	20 CU	2.51 NSL BLDG 134.100 SSL NESS AVE	1.1 S OF S/C	RECONNECT SERVICE
300 MARJORIE ST RESIDENTIAL	-	-	1.67 NSL BLDG 127.100 SSL NESS AVE	1.5 N OF S/C	RECONNECT SERVICE
301 MARJORIE ST RESIDENTIAL	20 CU	20 CU	3.17 NSL BLDG 124.860 SSL NESS AVE	1.7 N OF S/C	RECONNECT SERVICE
* 303 MARJORIE ST RESIDENTIAL	-	-	4.32 NSL BLDG 116.530 SSL NESS AVE	1.4 S OF S/C	RENEW TO R W/20 CU
304 MARJORIE ST RESIDENTIAL	-	-	2.69 NSL BLDG 116.030 SSL NESS AVE	-	RECONNECT SERVICE

* SERVICES TO BE RENEWED TO R. ALL OTHERS TO BE RECONNECTED

FOR INDEX SEE D-16527

NOTE: ALL VALVES TO BE INSTALLED COUNTERCLOCKWISE TO CLOSE



WARNING
IF POWER EQUIPMENT OR EXPLOSIVES ARE TO BE USED FOR EXCAVATION ON THIS PROJECT THE CONTRACTOR MUST:
1) NOTIFY THE GAS COMPANY OF THE PROPOSED LOCATION OF EXCAVATION.
2) TAKE PRECAUTION TO AVOID DAMAGE TO GAS COMPANY INSTALLATIONS.
SEE PROVINCIAL REGULATION 210/72 FOR DETAILS

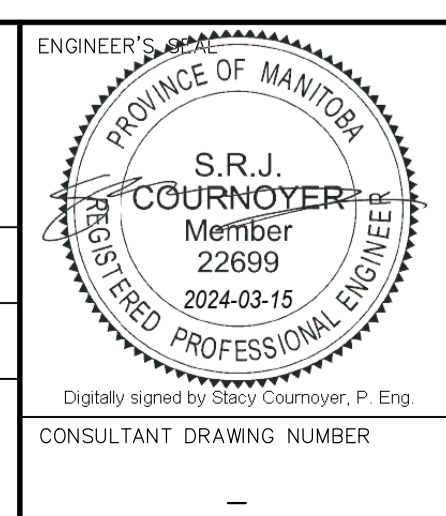
LOCATION APPROVED UNDERGROUND STRUCTURES
SUPV. U/G STRUCTURES COMMITTEE DATE
NOTE:
LOCATION OF UNDERGROUND STRUCTURES AS SHOWN ARE BASED ON THE BEST INFORMATION AVAILABLE BUT NO GUARANTEE IS GIVEN THAT ALL EXISTING UTILITIES ARE SHOWN OR THAT THE GIVEN LOCATIONS ARE EXACT. CONFIRMATION OF EXISTENCE AND EXACT LOCATION OF ALL SERVICES MUST BE OBTAINED FROM THE INDIVIDUAL UTILITIES BEFORE PROCEEDING WITH CONSTRUCTION.

VERTICAL DATUM: CGVD28 (HT2.0 Geoid)
HORIZONTAL DATUM: NAD83 (June 1990), Zone 14

NO.	REVISIONS	DATE	BY

DESIGNED BY: RG	CHECKED BY: SC
DRAWN BY: AJ	APPROVED BY: SC
SCALE: HORIZONTAL 1:250 VERTICAL 1:50	RELEASED FOR CONSTRUCTION
DATE: 2024 03 08	DATE:

PLOT DATE: 2024 03 08



THE CITY OF WINNIPEG
WATER AND WASTE DEPARTMENT
ENGINEERING DIVISION

2024 WATER MAIN RENEWALS
CONTRACT 2
MARJORIE STREET
115 S OF NESS AVENUE TO
215 S OF NESS AVENUE

SHEET 10 OF 12
CITY DRAWING NUMBER
D-16535